



Durofix RV332 Motor Replacement

This guide will instruct how to properly replace a defective screwdriver motor for the Durofix RV332 Cordless Li-ion Screwdriver.

Written By: Tyler Vincent



INTRODUCTION

Part# 3805-30529



TOOLS:

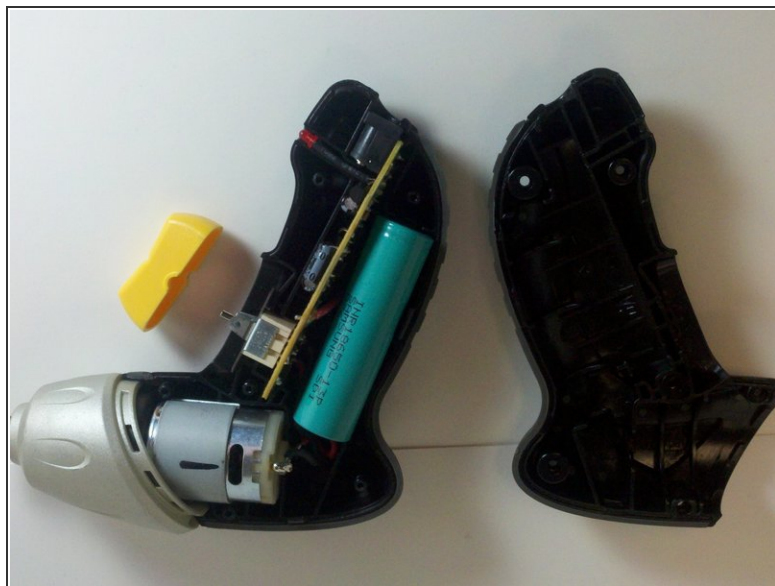
- [iFixit Opening Tools](#) (1)
 - [Phillips #0 Screwdriver](#) (1)
 - [Soldering Iron](#) (1)
 - [Wire cutters/side cutters](#) (1)
 - [Solder](#) (1)
-

Step 1 — Screwdriver Motor



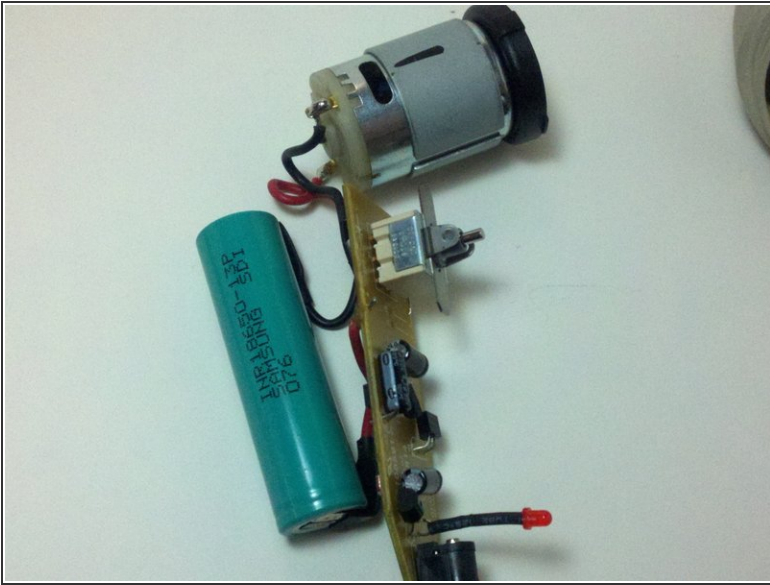
- Remove the six 13 mm case screws with philips #0 screwdriver.

Step 2



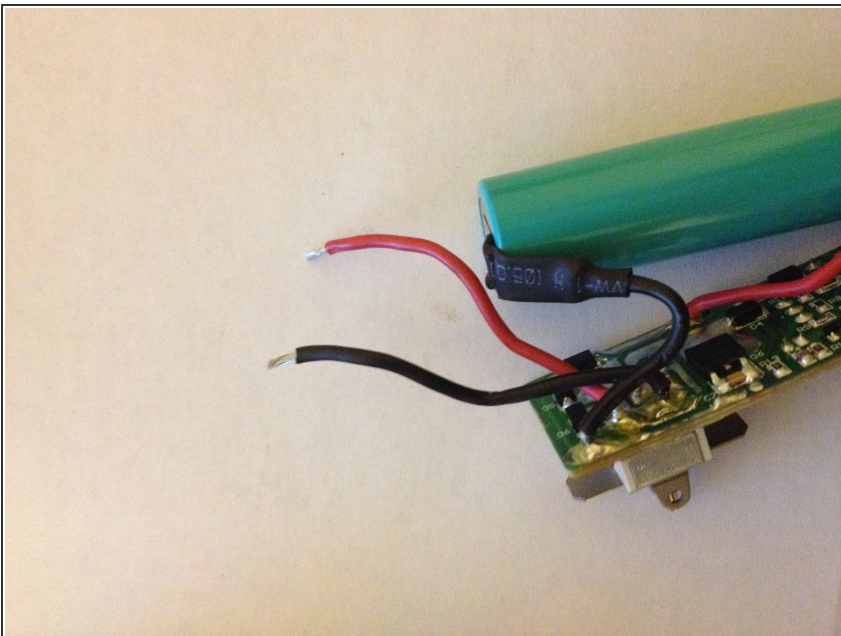
- Use the plastic separating tool to separate the casing halves of the cordless screwdriver.

Step 3



- Once the screwdriver casings have been separated, remove the printed circuit board, battery, LED, and motor assembly from the screwdriver casing.
- Using the wire cutters, cut the black and red motor wires where they connect to the motor.

Step 4



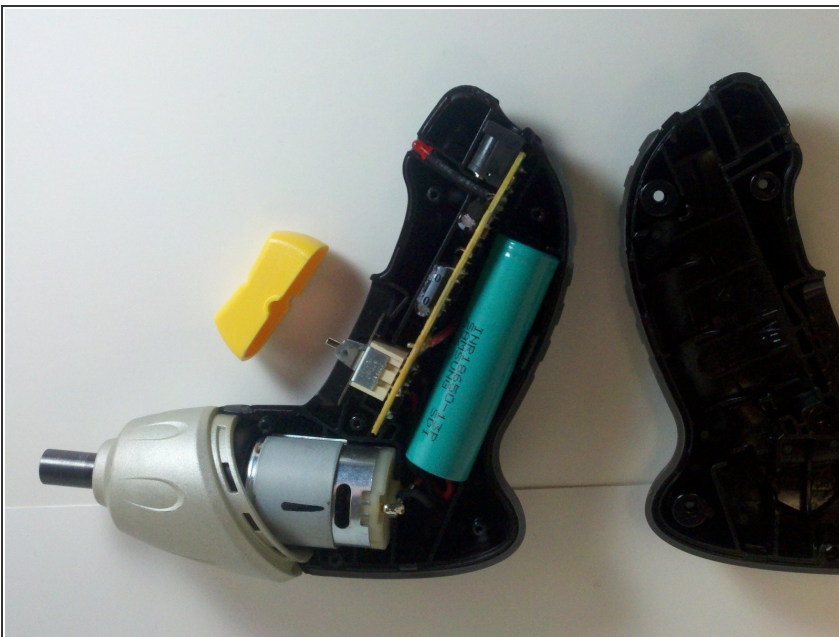
- Strip the ends of the wires clean with the wire cutters. Strip the wire insulation 1/4" from the end of the wire.

Step 5



- Ensure the new motor terminals are clean before soldering.
 - Solder the red wire to the positive motor terminal, designated by a plus sign with a red circle around it.
 - Solder the black wire to the other terminal of the motor.
- ⚠ Allow the newly soldered assembly to cool before continuing.

Step 6



- Once the motor has cooled, replace the motor, printed circuit board, LED, and battery inside the screwdriver casing.

To reassemble your device, follow these instructions in reverse order.