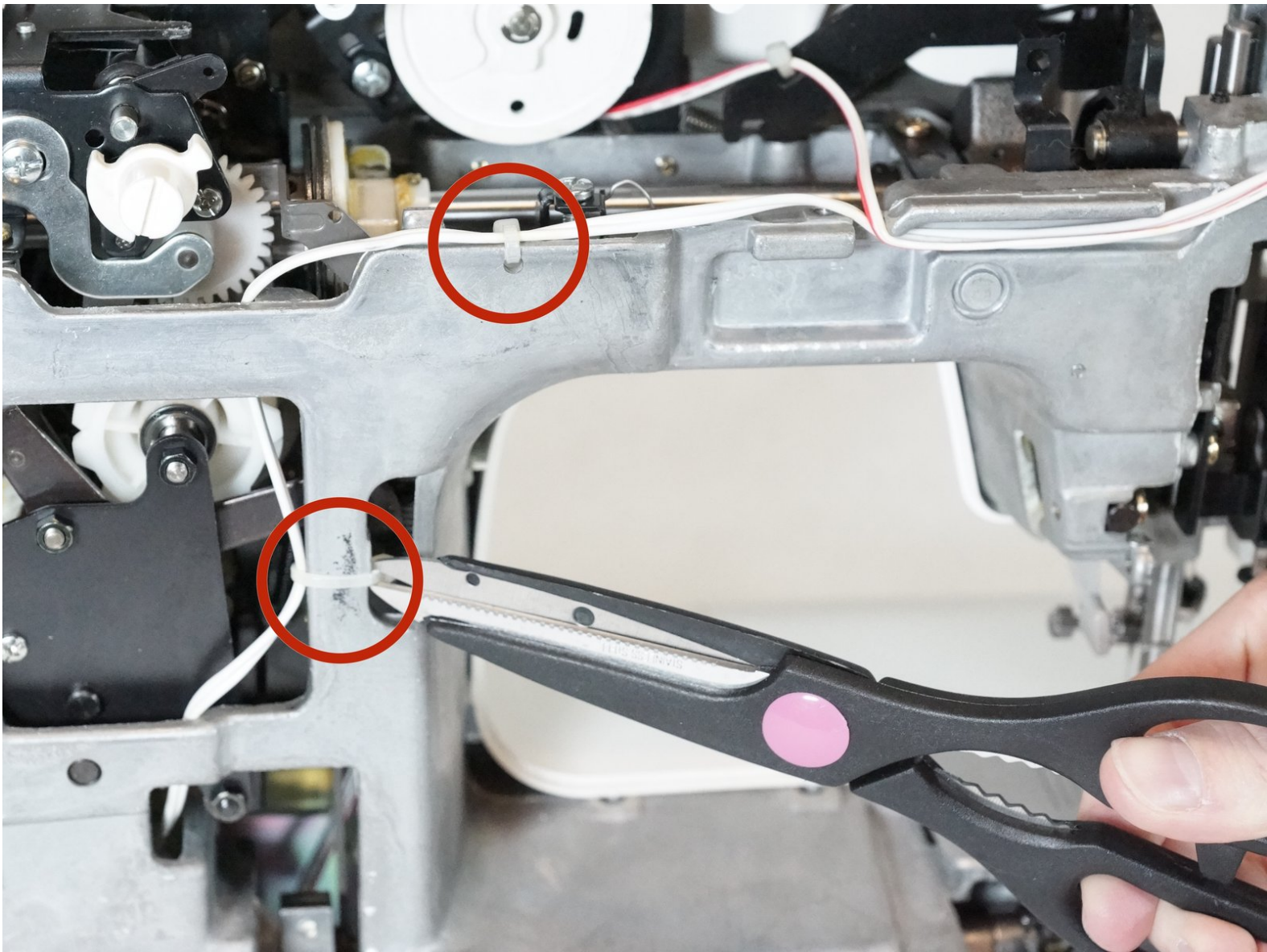




# Brother XR-40 Lightbulb Replacement

Replacing the lightbulb involves opening up the...

Written By: Kevin Bickers



## INTRODUCTION

Replacing the lightbulb involves opening up the machine. You will need to purchase a sewing machine bulb set, including the wire plug-in, to replace it.



### TOOLS:

- [Phillips #2 Screwdriver](#) (1)
- [Utility Scissors](#) (1)
- [6-in-1 Screwdriver](#) (1)



### PARTS:

- [Zip Ties](#) (1)

## Step 1 — Back Panel



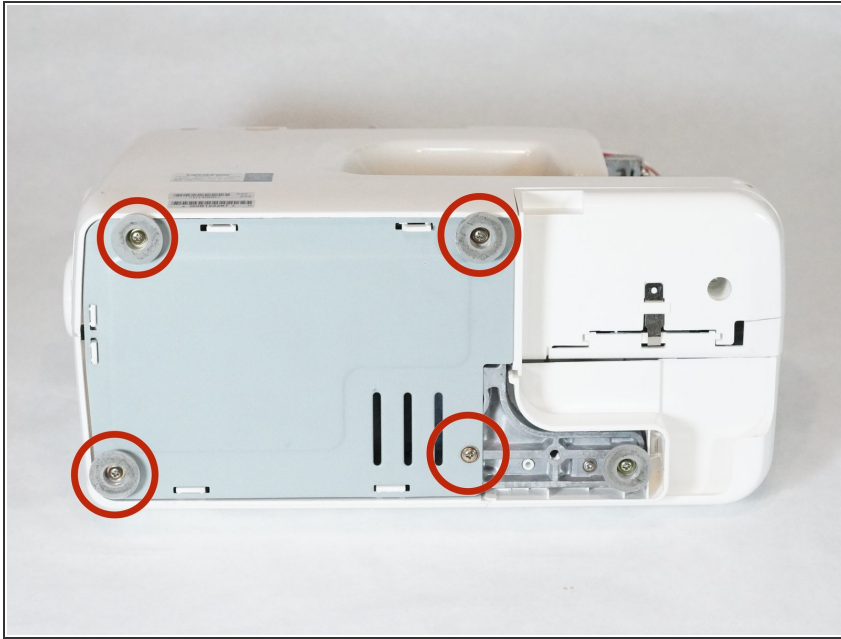
- Place the machine on a solid surface.
- Remove the 14mm Phillips #2 screw holding on the face cover.

## Step 2



- Remove the two 14mm Phillips #2 screws and two 22mm Phillips #2 screws that secure the rear casing.

### Step 3



- Lay the machine on its side.
- Remove the four 10mm Phillips #2 screws that hold the bottom panel in place.
- ⓘ The feet will come off with the screws.

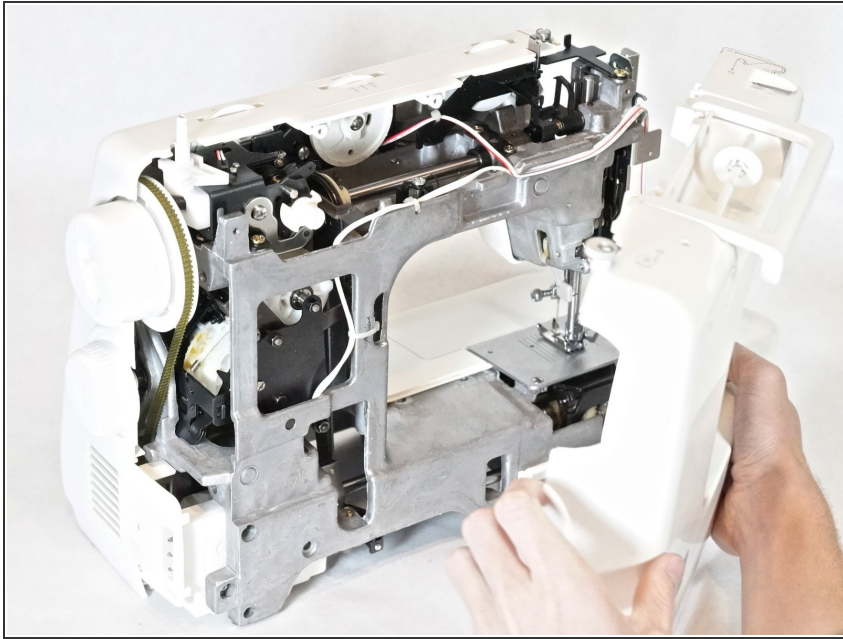
### Step 4



- Remove the bottom panel.

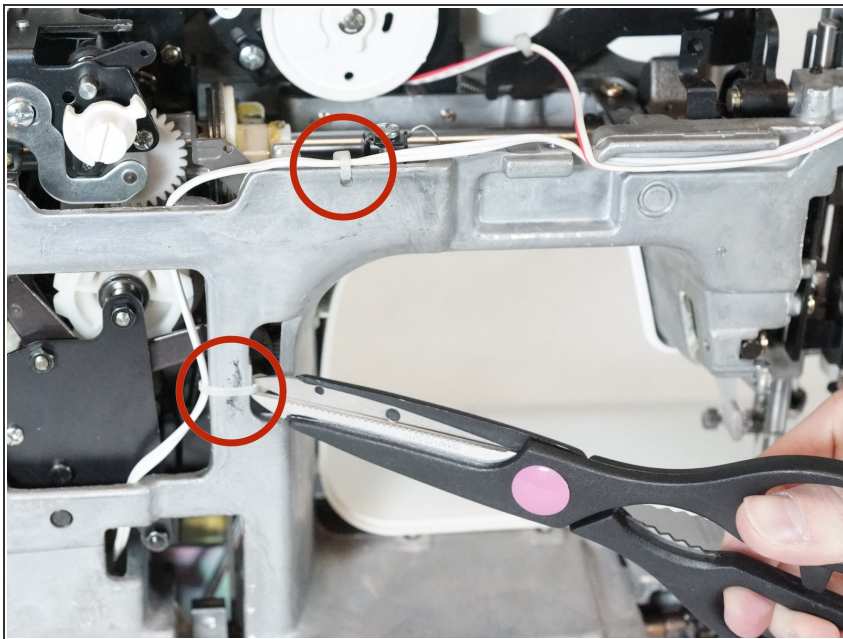


## Step 5



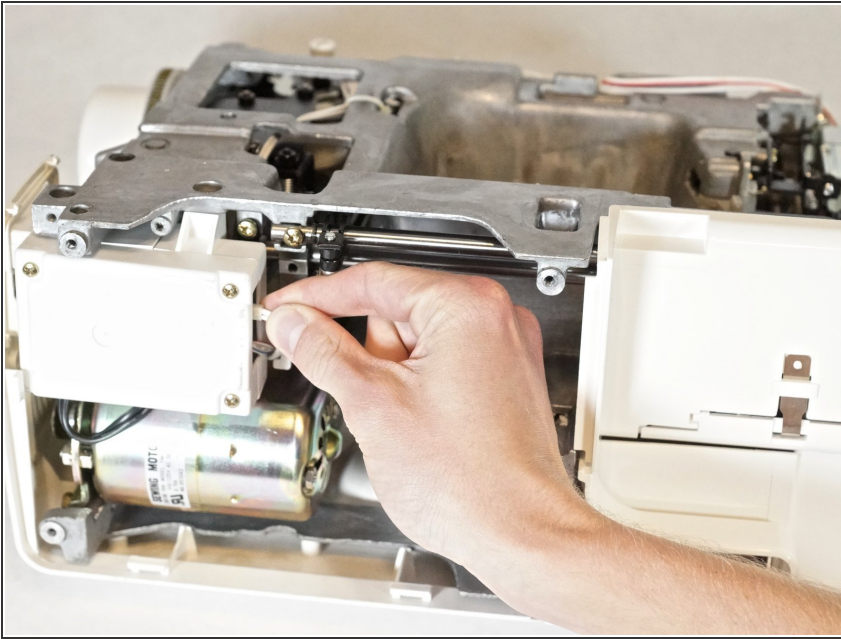
- Place the machine upright.
- Remove the rear casing.
- ① You may have to wiggle the panel and pull at the same time.

## Step 6 — Lightbulb



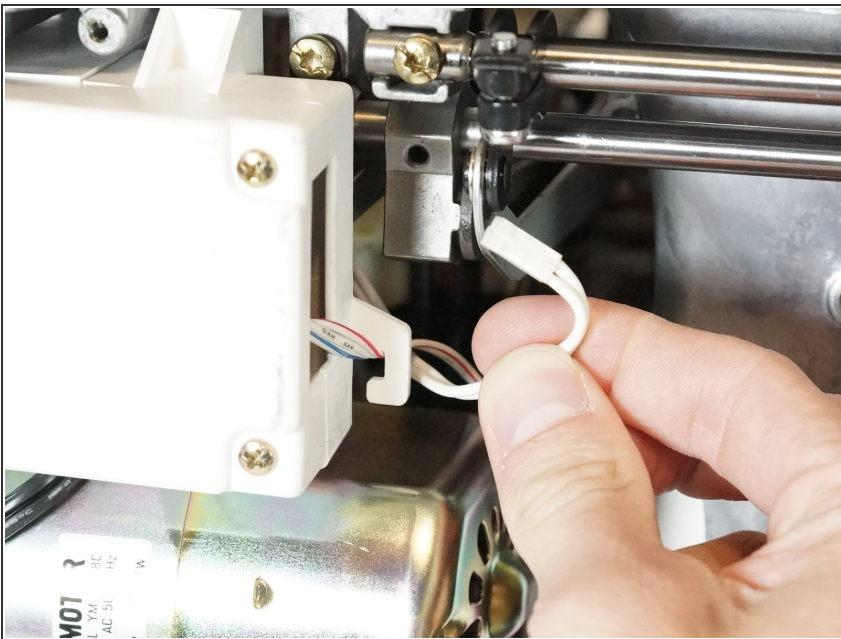
- Using scissors, clip the two zip ties securing the lightbulb wire.

## Step 7



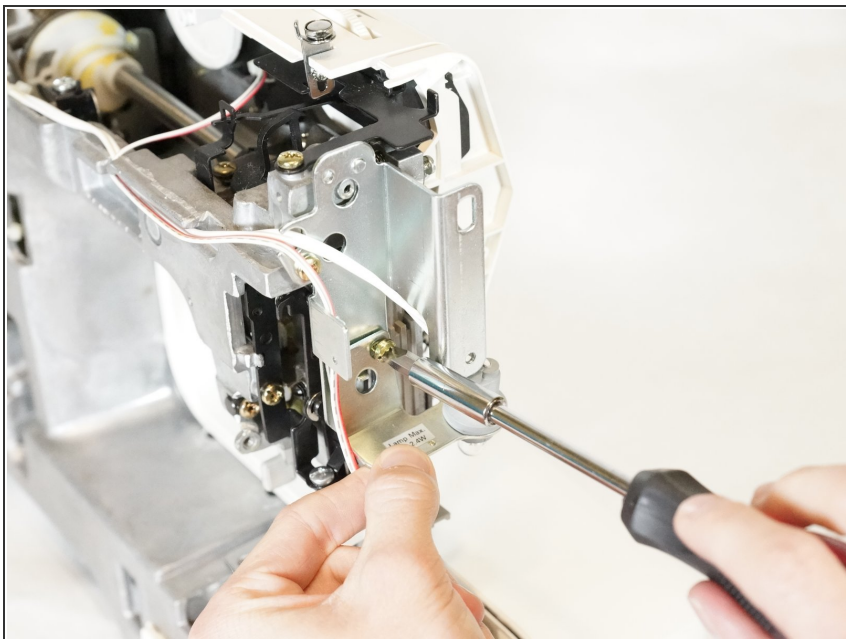
- Place the machine on its side, with access to the bottom.
- Gently pull out the white wire connecting the bulb to the machine.

## Step 8



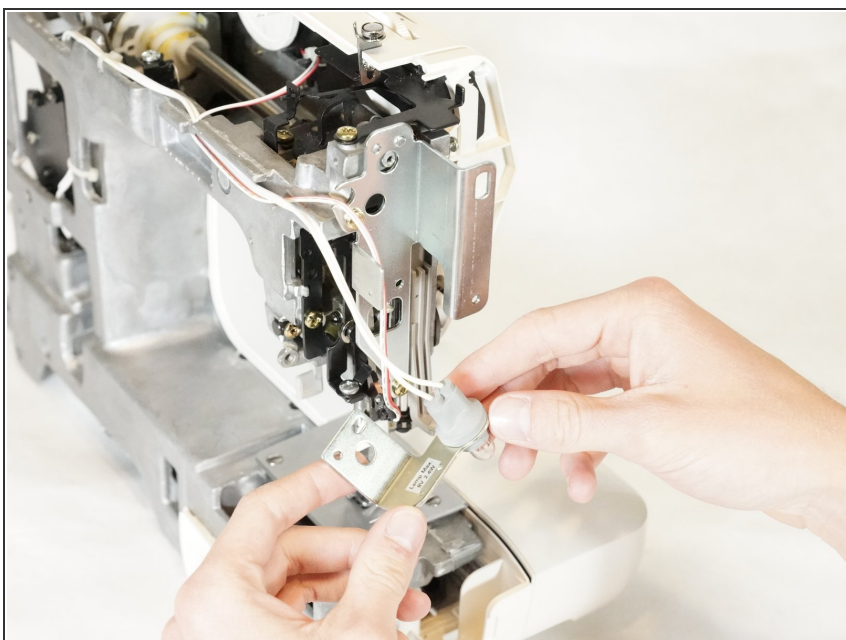
- Move the wire out from under the plastic hook.

## Step 9



- Place the machine upright.
- Using the flathead screwdriver, remove the 5mm Flathead screw holding on the lightbulb bracket.

## Step 10



- Remove the lightbulb assembly.

To reassemble your device, follow these instructions in reverse order.