



Toshiba Satellite P205-S8811 Disk Drive Replacement

This guide will show you how to take out the disk drive and replace it with ease.

Written By: Bradley Johnson



INTRODUCTION

If your disk drive is not reading any disks or can not open, then this guide will help you quickly replace it.



TOOLS:

- [Spudger](#) (1)
 - [T8 Torx Screwdriver](#) (1)
-

Step 1 — Battery



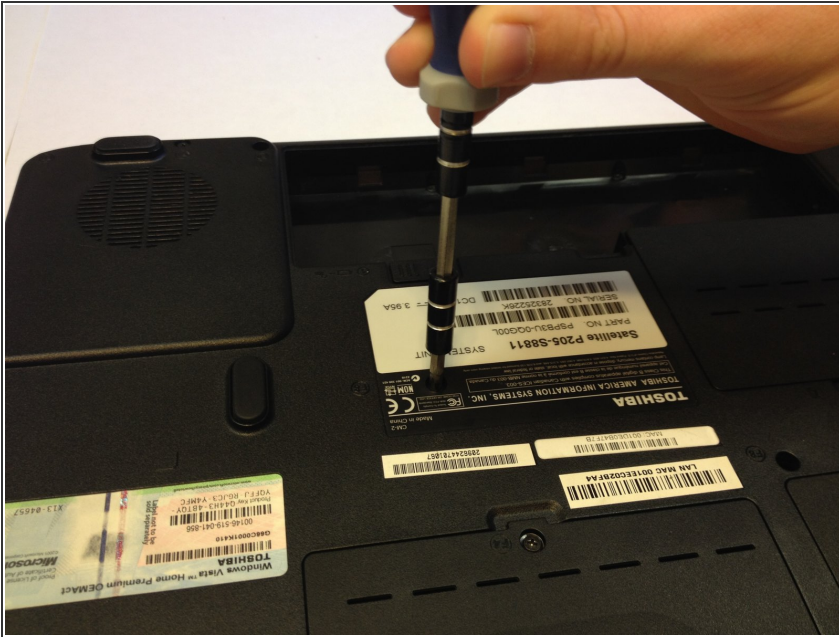
- Flip the laptop over so the bottom is facing upward and the battery is on top.
- Slide the tab below the battery to the left.

Step 2



- Slide and hold the tab on the right side of the battery to the right.
- While holding the right tab, slide the battery upward and out its socket.

Step 3 — Disk Drive



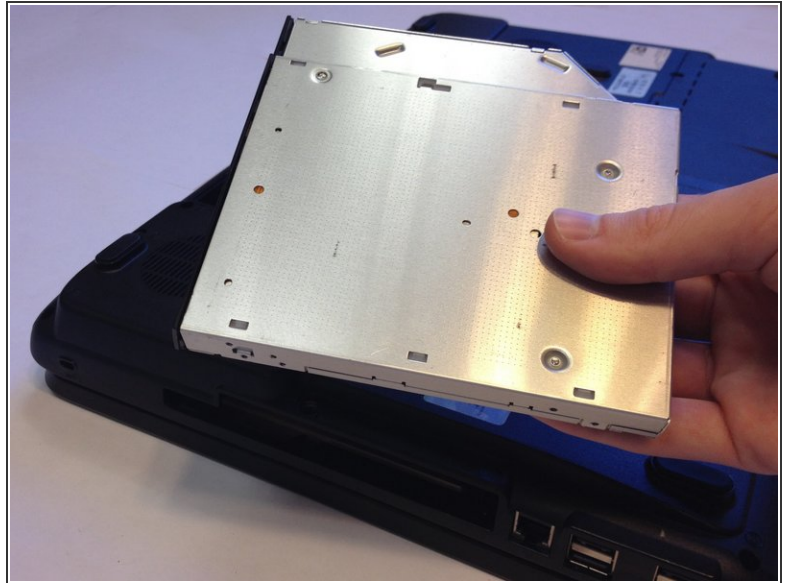
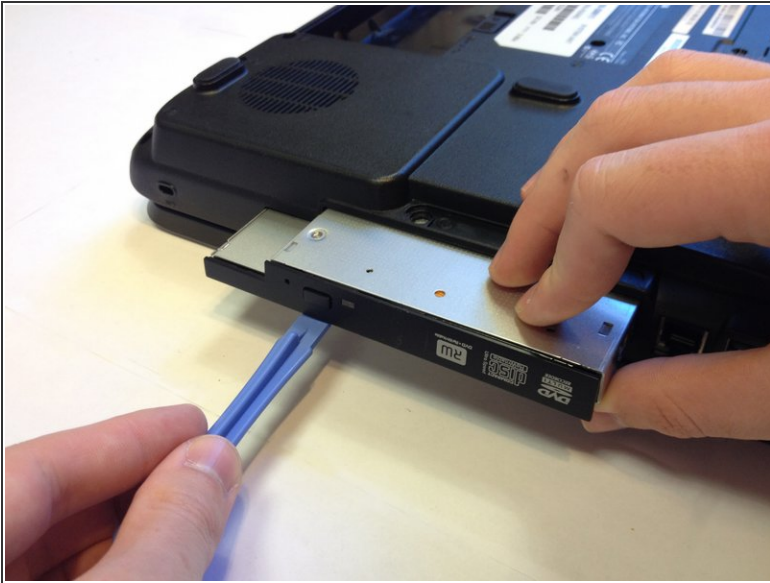
- Remove the 8mm Phillips #1 screw that holds the disk drive in place.

Step 4



- Use a plastic opening tool to pry out the disk drive.

Step 5



- Once the disk drive becomes loose, slowly slide it out and set it aside.

To reassemble your device, follow these instructions in reverse order.