



# Samsung L100 LCD Screen Replacement

Written By: Hasit



# INTRODUCTION

This guide shows how to replace the LCD screen on the Samsung L100.



## TOOLS:

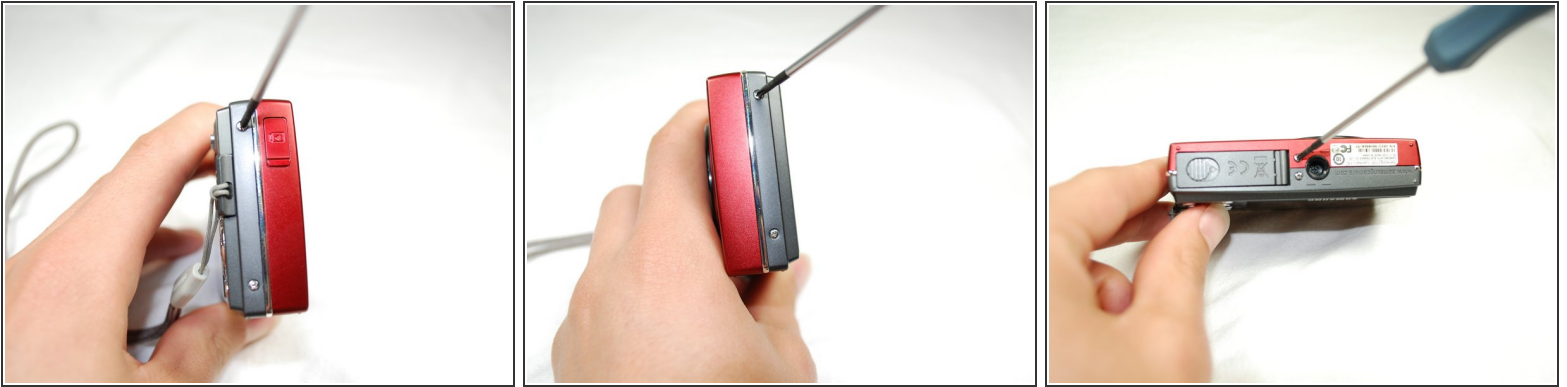
- [Phillips #0 Screwdriver](#) (1)



## PARTS:

- [Samsung L600 LCD Display](#) (1)

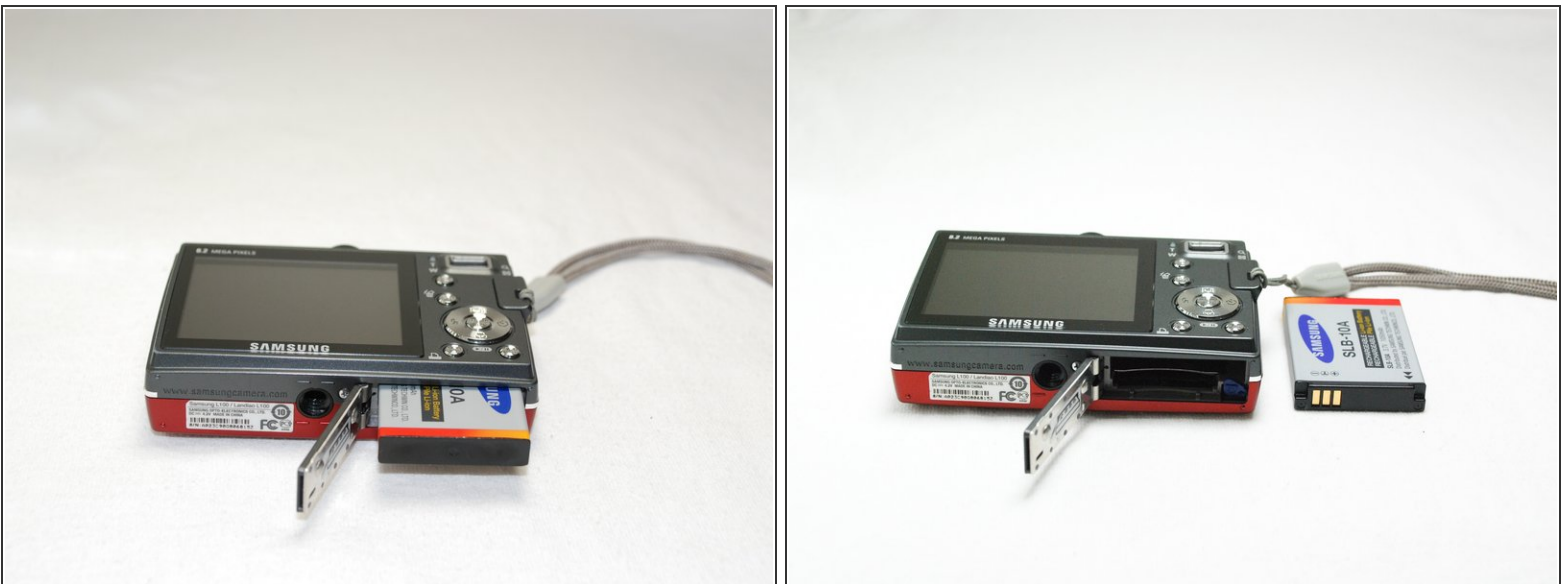
## Step 1 — Removing Back Cover



- Remove the **six** external screws from the camera using a **Phillips #0** screwdriver.
- After the screws has been removed, the bottom of the back half of the external case should be loosened from the camera.

⚠ Be careful, make sure you don't lose the screws.

## Step 2



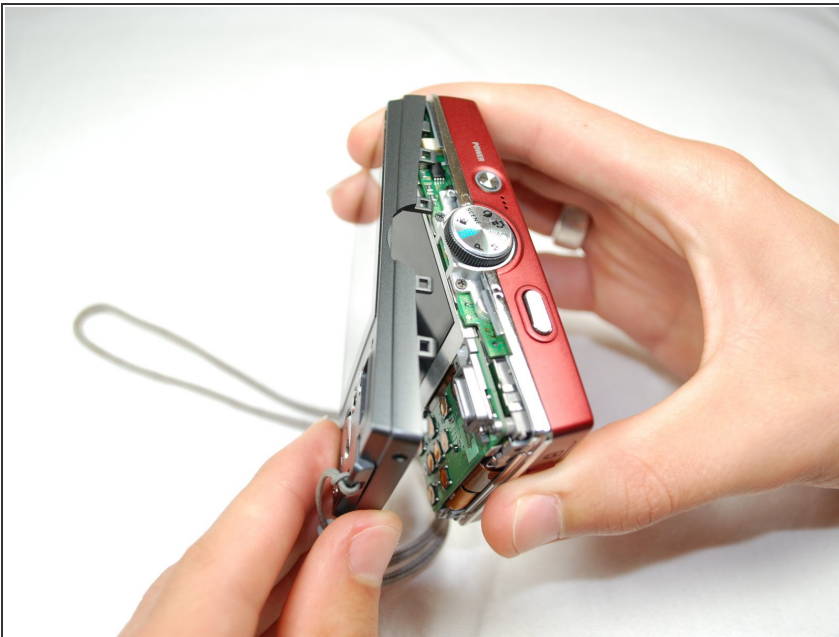
- Open the battery cover that's located on the bottom right side of the camera and carefully remove the battery.

## Step 3



- Slide your fingernail or a plastic spudger in the groove from the bottom to the top right side of the camera.

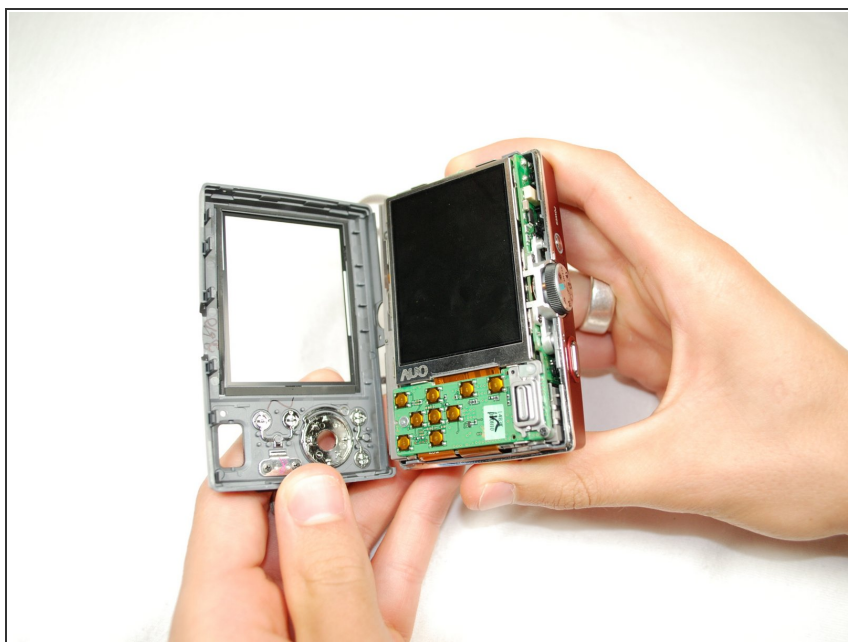
## Step 4



- Carefully squeeze the top right corner of the camera and pry off the external cover.
- ⓘ If you hear a "cracking" sound. This is normal.
- Continue to pull the external cover and it will come off cleanly.
- ⚠ Be cautious of the flash capacitor. It carries an electrical charge, that may give you an unpleasant shock.



## Step 5



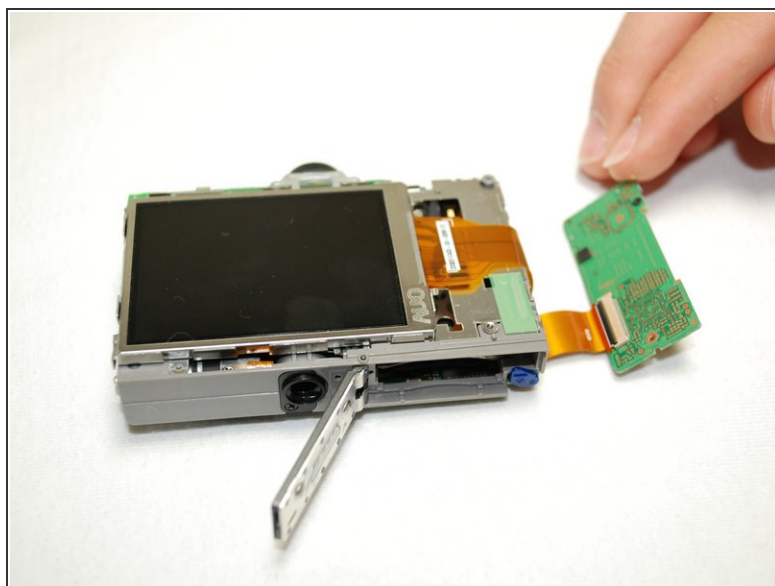
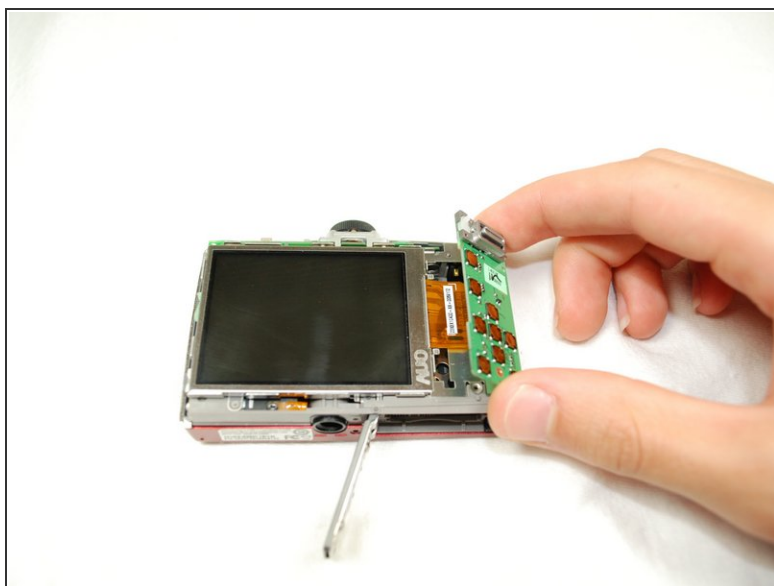
⚠ Carefully pull off the back cover, parts behind the back of the case might fall out.

## Step 6 — LCD Screen



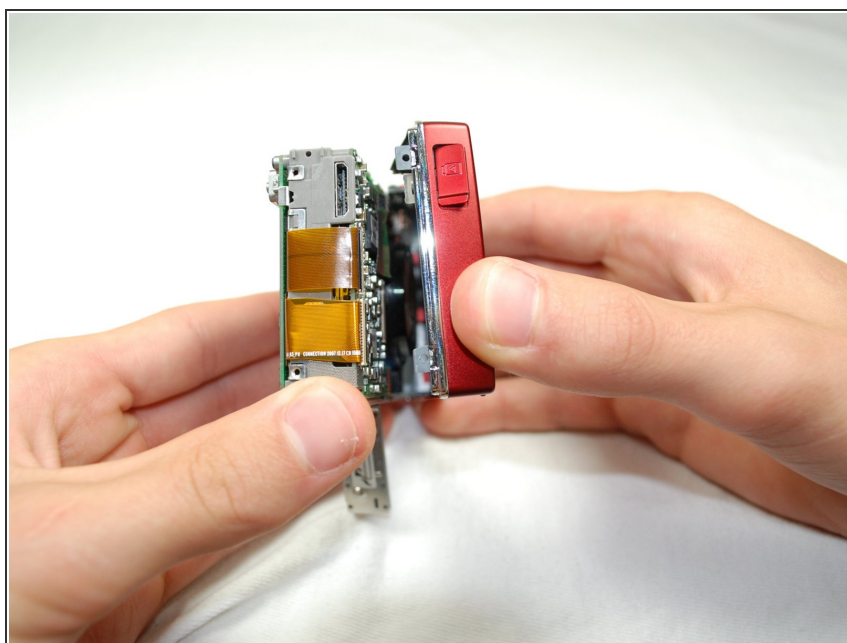
- Remove the screws holding the circuit board.
- Carefully remove the circuit board.

## Step 7



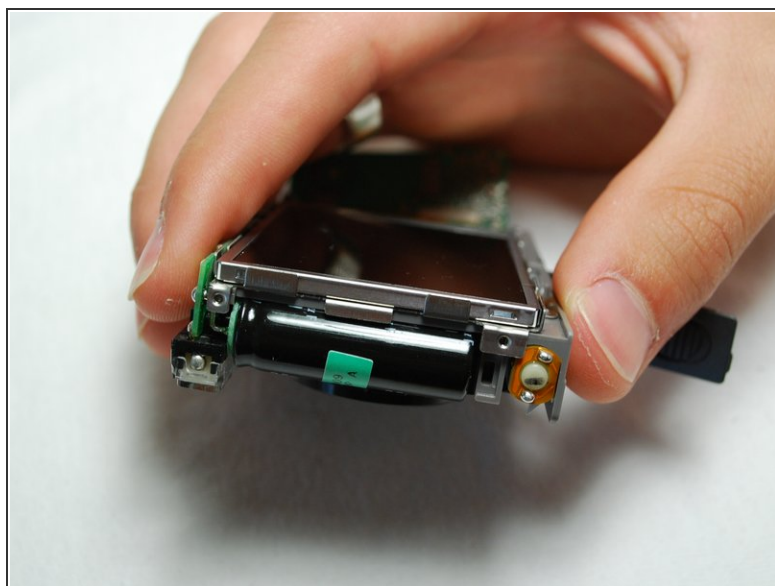
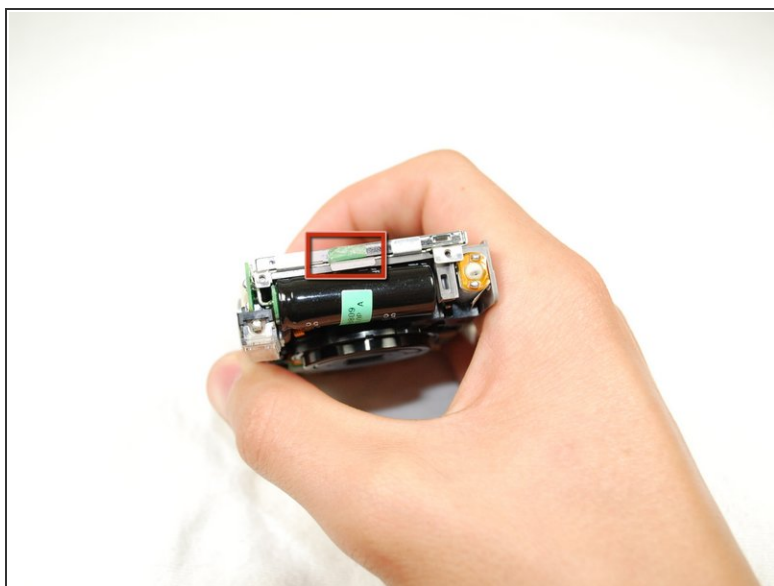
- Carefully lift circuit board from camera.
- ⓘ Circuit board still attached to camera by ribbon.

## Step 8



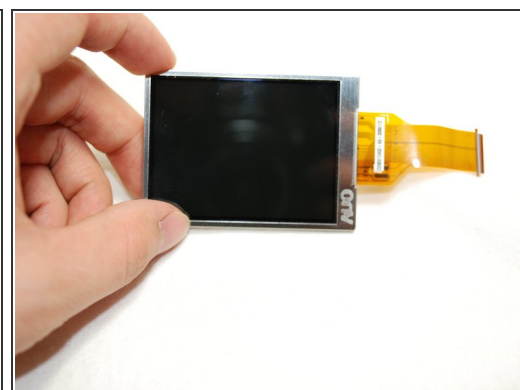
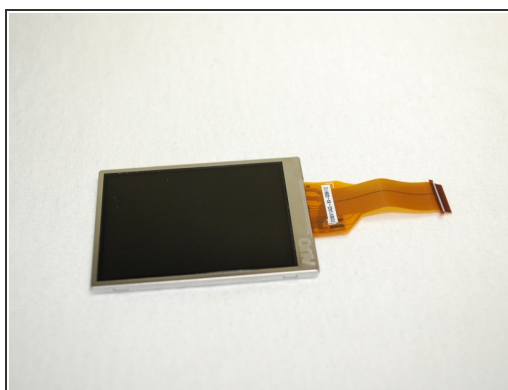
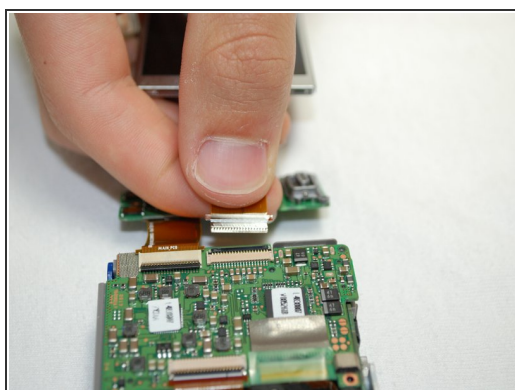
- Remove the front cover. It should come off easily.
- ⚠ Buttons might fall out when you remove the front cover.

## Step 9



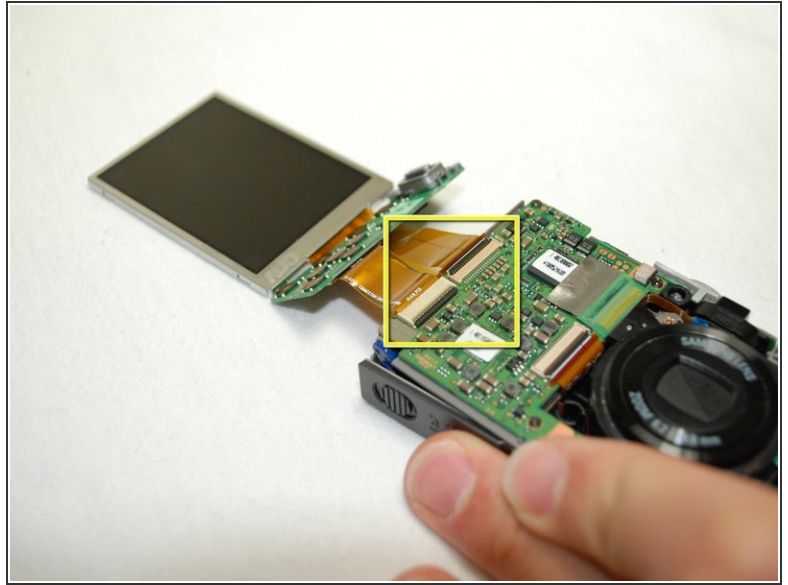
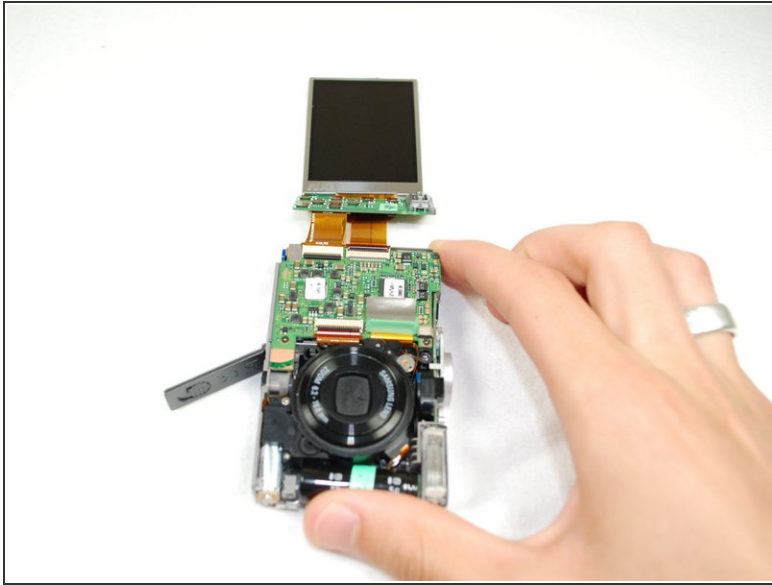
- Remove the green tape that holds the LCD screen.
- Carefully lift the LCD Screen.

## Step 10



- Flip the camera over to the other side.
- Lift the black strip and the ribbon should easily come out.
- The LCD Screen should be completely separated from the camera now.

## Step 11



- Insert the new LCD Screen by pushing the ribbon into the slot.
- Flip the black strip back down to lock the ribbon in.
- Your new LCD Screen should be connected to the camera now.

To reassemble your device, follow these instructions in reverse order.