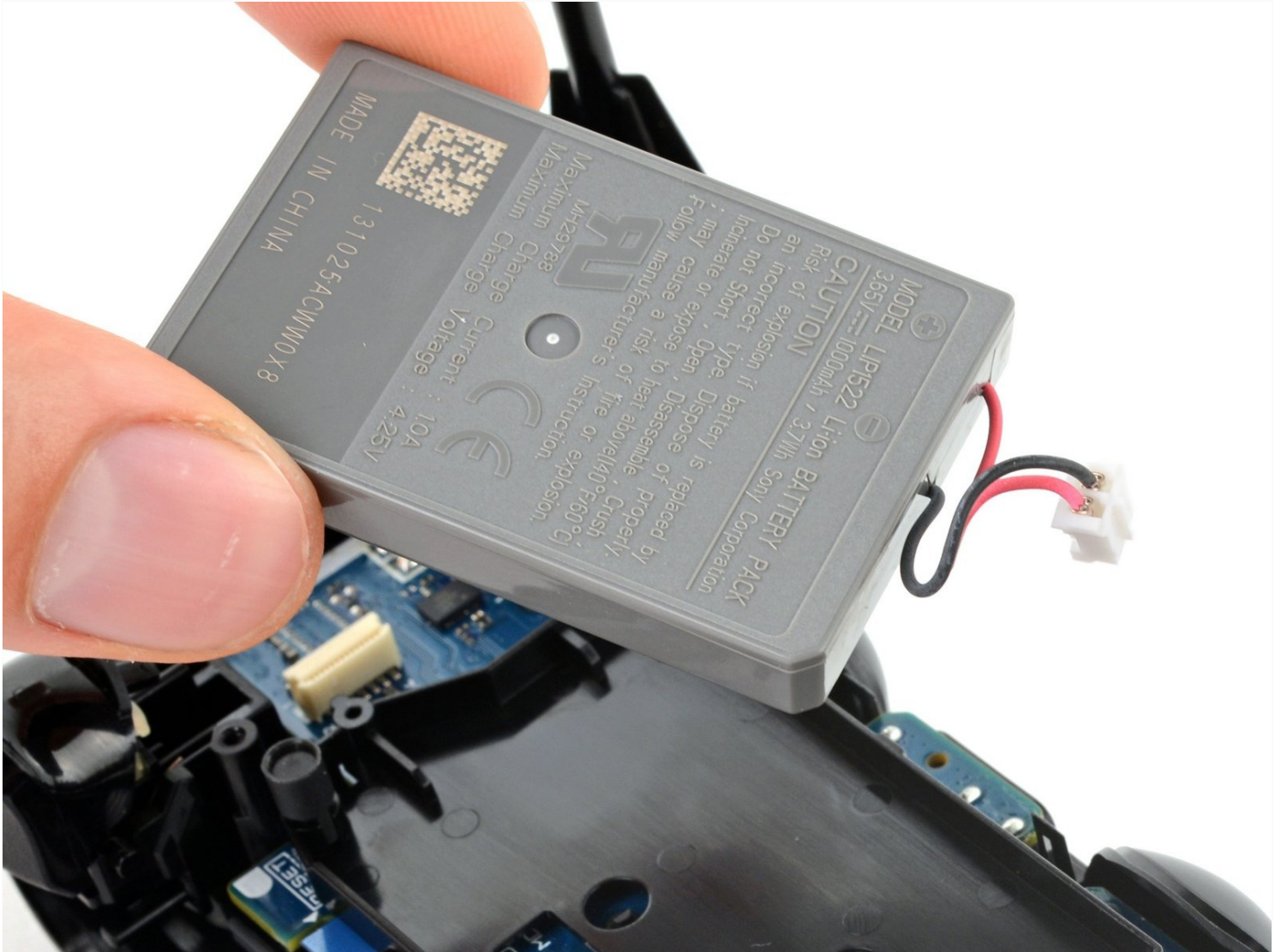




## DualShock 4 (CUH-ZCT1U) Battery Replacement

## Follow this guide to replace the battery in...

Written By: Clay Eickemeyer



# INTRODUCTION

Follow this guide to replace the battery in your DualShock 4 model CUH-ZCT1U controller.

## TOOLS:

Microfiber Cleaning Cloths (1)  
Phillips #00 Screwdriver (1)  
1 x Opening Picks (1)  
Spudger (1)  
Tweezers (1)

## PARTS:

DualShock 4 (JDM-030 and Earlier)  
Controller Battery (1)

## Step 1 — Check your controller model



- Check the model number on the back of your controller. This guide was written using model **CUH-ZCT1U**. If you have another model, the guide procedure and replacement parts may differ slightly.
- ① If you have the second generation DualShock 4, model **CUH-ZCT2U**, [use these guides](#).

## Step 2 — Unfasten the rear case



- ❶ If you need to stabilize your controller during this repair, lay it on a soft surface such as a [microfiber cloth](#).
- Use a Phillips screwdriver to remove the four 6.4 mm-long screws securing the rear case.

## Step 3 — Remove the L1 button



- Use an opening pick to pry each corner of the L1 button from the front case.
  - ❶ Cover the button to prevent it from ejecting out of your workspace.
- Remove the button.



## Step 4 — Remove the R1 button



- Use your opening pick to pry and remove the R1 button, just as you did for the L1 button.

## Step 5 — Unclip the rear case



① Six plastic clips secure the rear case to the front case. The next four steps demonstrate how to release these clips before you can open the controller.

- Insert your opening pick at a downward angle between the front case and rear case, halfway between the handle and the action buttons.
- Slide your pick toward the handle and pry up to release the first clip.
- Repeat this procedure on the other side of the controller to release the second clip.

## Step 6



- Two more clips secure the rear case near the extension port and the headphone jack.
- Insert your opening pick between the front case and rear case at either side of the ports.
- Twist your pick to unclip this section of the rear case from the front case.
  - ⓘ If the rear case feels stuck, insert and twist your pick from different angles.

⚠ Don't open the controller yet, as it's still held together by two very delicate clips near the triggers.

## Step 7



- ⓘ The final two clips are very delicate, and must be disengaged from inside the controller. If you break them, don't worry—it won't affect this repair or your controllers functionality.
- Locate the clips by looking through the gap above the R2 or L2 buttons.

## Step 8



- Insert the point of a spudger through the gap above the R2 button and push the retaining clip outward.
- While pushing the clip outward, slowly pull the rear case away from the front case until you feel them separate.  
**⚠ Don't fully open the controller until each of the R2 and L2 clips have been disengaged.**
- Repeat this procedure for the clip near the L2 button.

## Step 9 — Remove the rear case



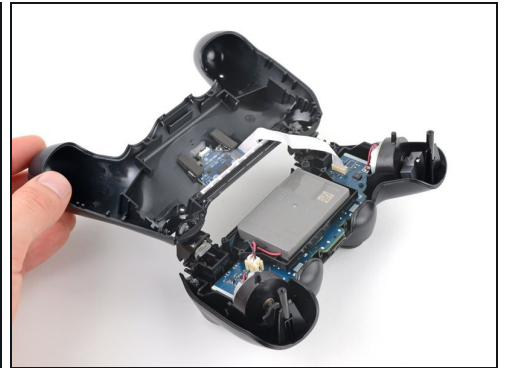
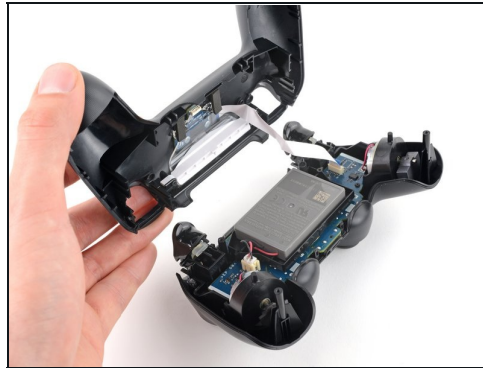
- Press the R2 button and slide the rear case over it.

## Step 10



- Press the L2 button and slide the rear case over it.

## Step 11



- Flip the rear case over the top of the controller and lay it down, being careful not to strain the interconnect cable.

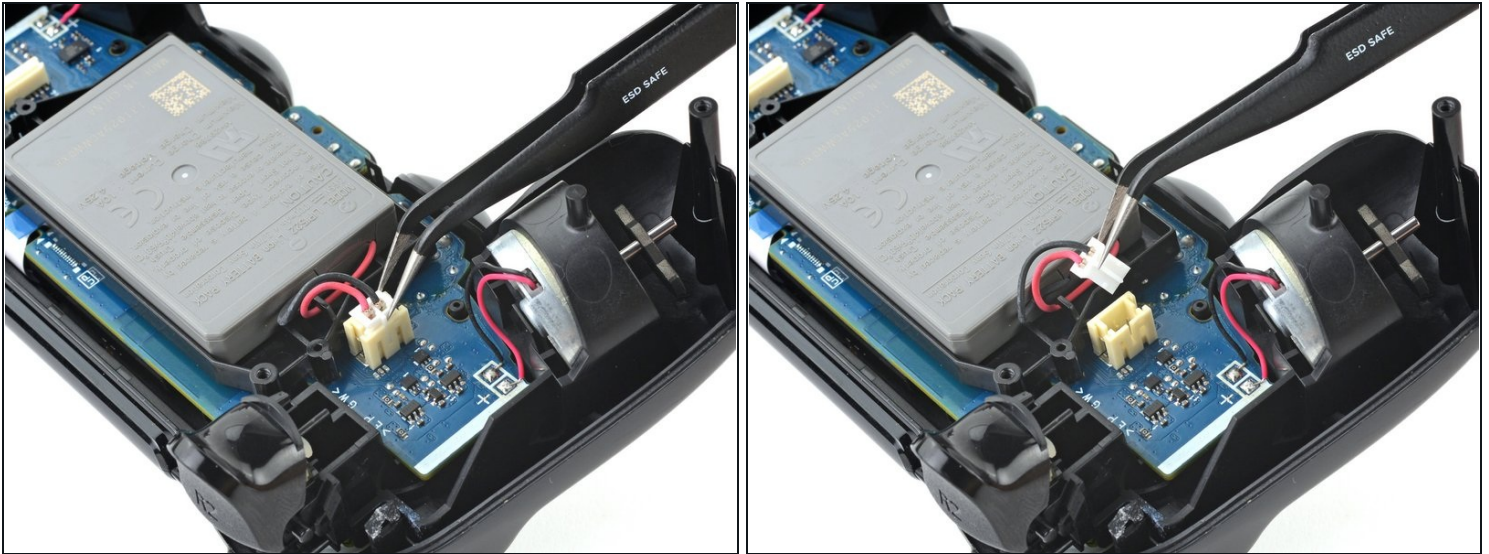


## Step 12 — Disconnect the interconnect cable



- Use tweezers or your fingers to remove the interconnect cable by pulling its blue pull tab straight out of the socket.
- ☑ During reassembly, reconnect the cable with its blue pull tab facing the outside of the controller.

## Step 13 — Disconnect the battery



- Use tweezers or your fingers to grab and disconnect the head of the battery cable from the motherboard.

⚠ Only pull on the head of the connector—don't pull on the cable itself.



## Step 14 — Remove the battery



- Remove the battery.

---

**To reassemble your device, follow these instructions in reverse order.**

Take your e-waste to an [R2 or e-Stewards certified recycler](#).

Repair didn't go as planned? Try some [basic troubleshooting](#), or ask our [Answers community](#) for help.