



iRobot Roomba 4100 Flexible Rubber Brush Replacement

This is a guide for either maintenance or removal of the flexible rubber brush in the Red Roomba 4100.

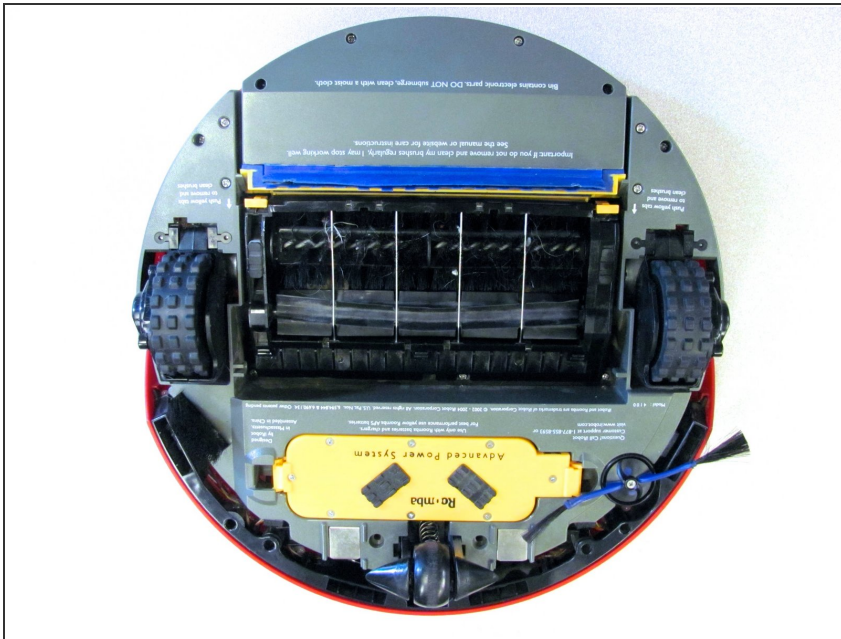
Written By: Samantha Barrett



INTRODUCTION

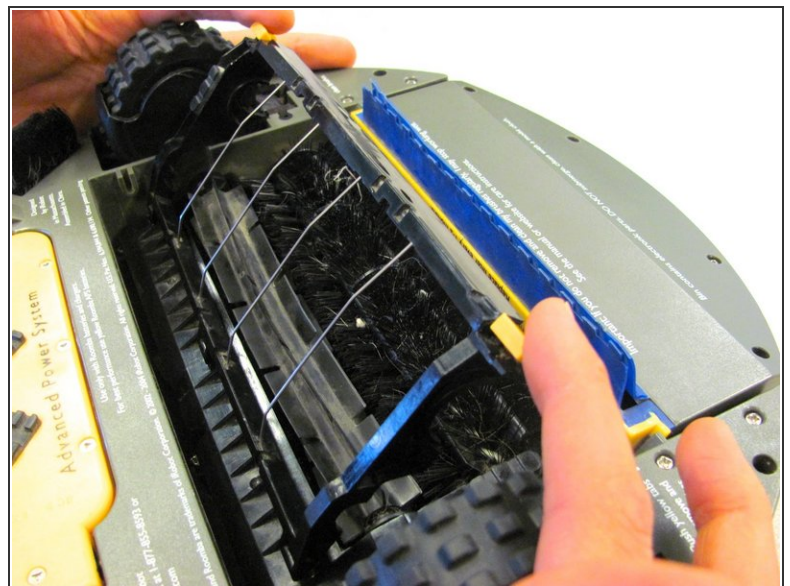
This is an easy guide. It should only take a few minutes to complete. It doesn't require any tools.

Step 1 — Brush Guard



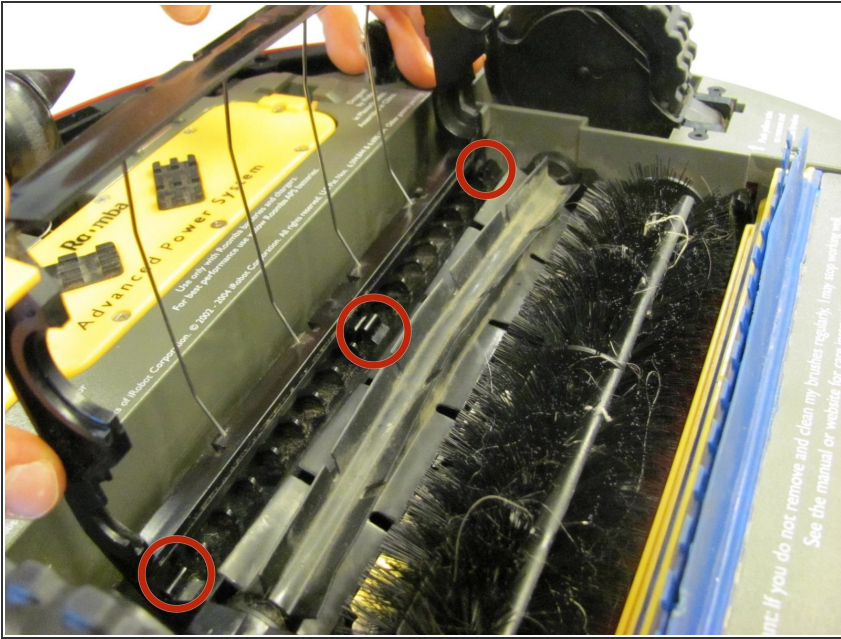
- Lay the Roomba upside down on a flat surface with the blue strip away from you.

Step 2



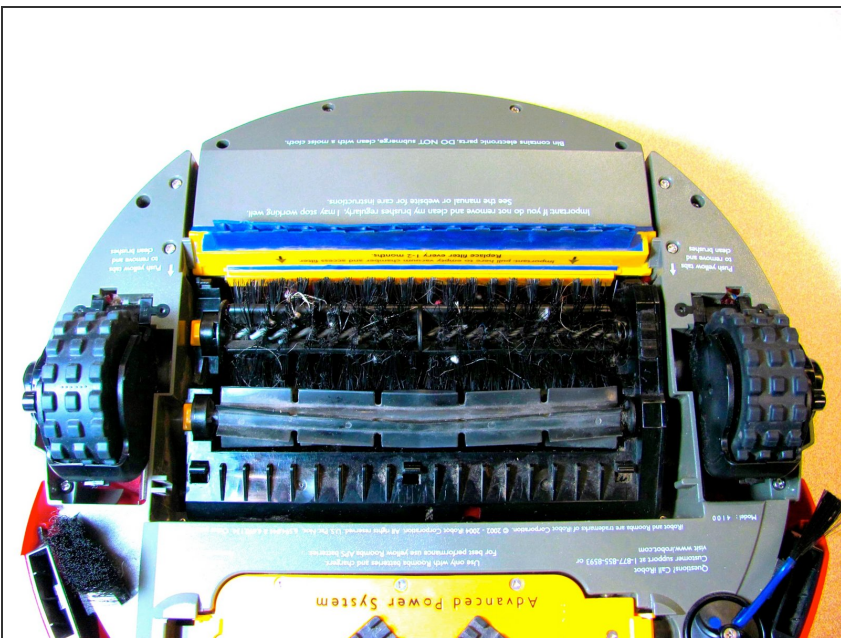
- Use your index fingers to pull the yellow tabs towards you.
- While still pulling the yellow tabs with your index fingers, tilt up the brush guard.
- ☑ For reassembly, make sure to push in the brush guard until it clicks into place.

Step 3



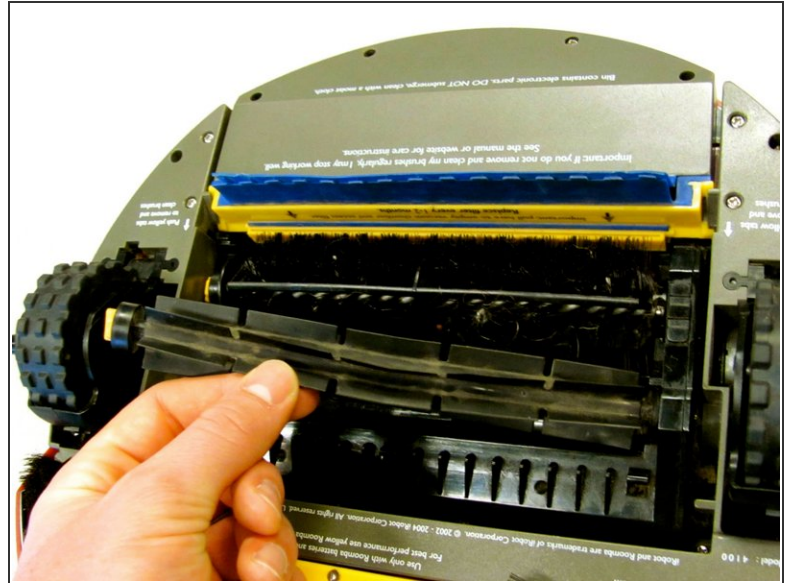
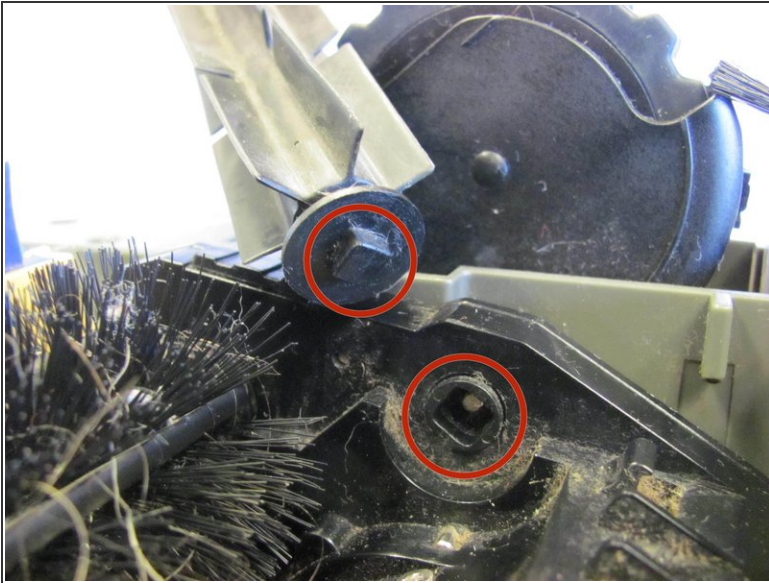
- Pull back the brush guard to unhook it from the latches.
- Remove the brush guard by lifting it up and out of the Roomba.
- ⓘ This picture has a change in orientation to illustrate the latches. Continue disassembling the Roomba with the blue strip away from you.

Step 4 — Flexible Rubber Brush



- Set the brush guard aside.
- ⓘ The flexible rubber brush is the smooth, all-rubber brush that is closest to the yellow battery.

Step 5



- Remove the flexible rubber brush by grabbing it and pulling it up and out of the Roomba.
- ☑ For reassembly, orient the Roomba with the battery closest to you:
 - First, insert the black end of the flexible rubber brush into the black square opening on the right side.
 - Second, lay the flexible rubber brush back into place.

To reassemble your device, follow these instructions in reverse order.