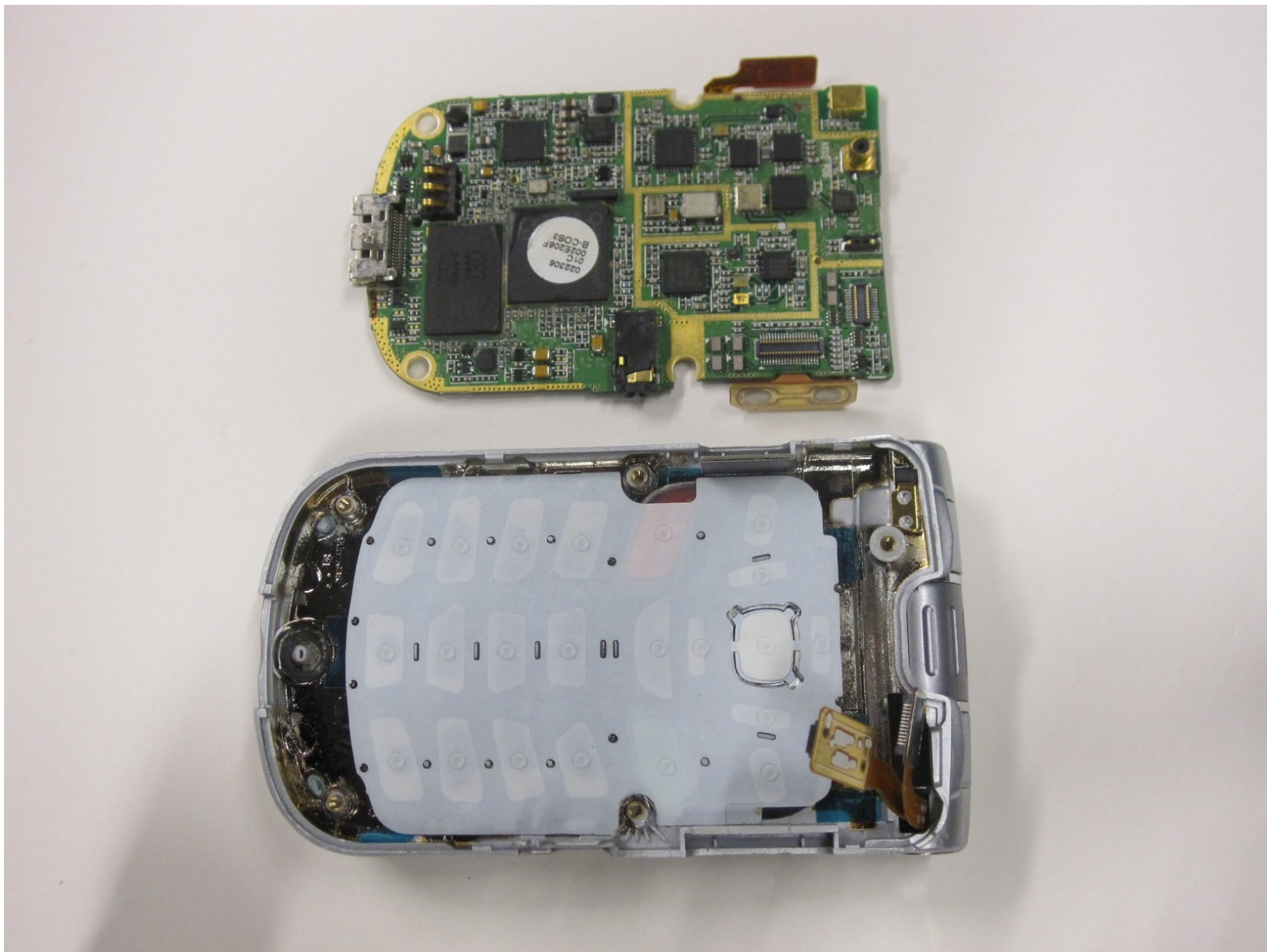




Samsung SCH-A890 Keypad Replacement

Written By: Santiago Caceres



INTRODUCTION

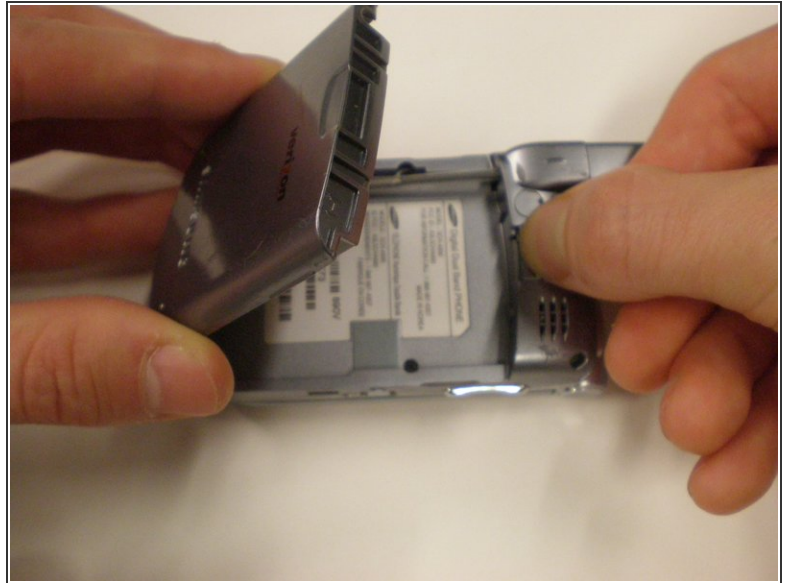
This guide will walk you through the steps necessary to clean and repair a faulty keypad on the Samsung SCH A890 phone.



TOOLS:

- [Phillips #00 Screwdriver](#) (1)
 - [Flathead 3/32" or 2.5 mm Screwdriver](#) (1)
-

Step 1 — Battery



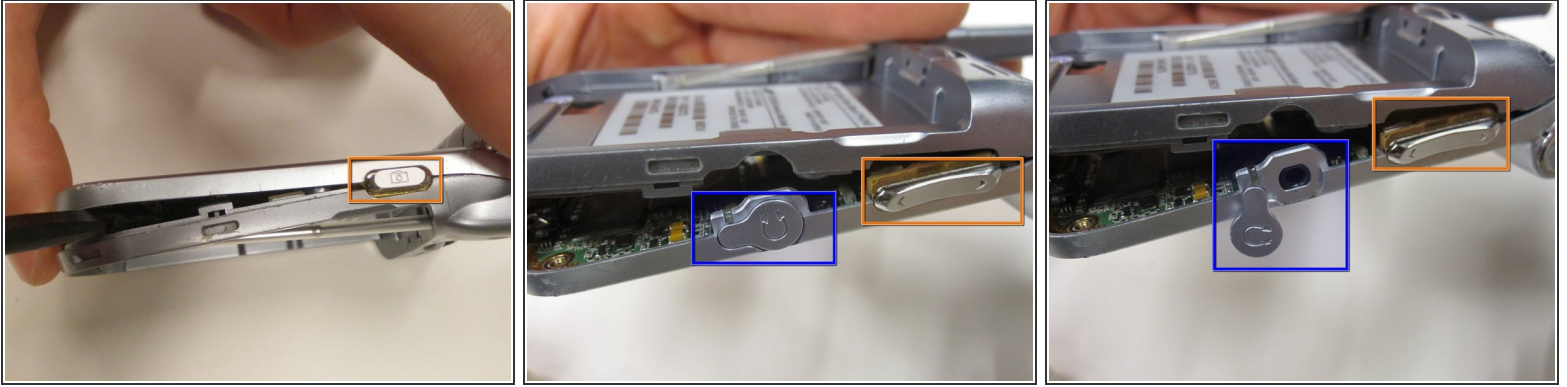
- Remove the battery by pinching and unlatching the clip located above the Verizon logo on the back of the phone.
- Lift the battery off the back of the device.

Step 2 — Back Cover



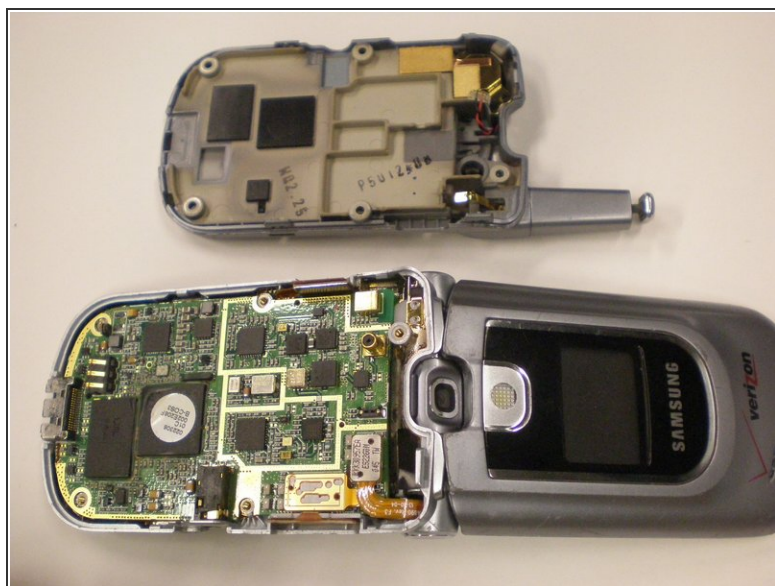
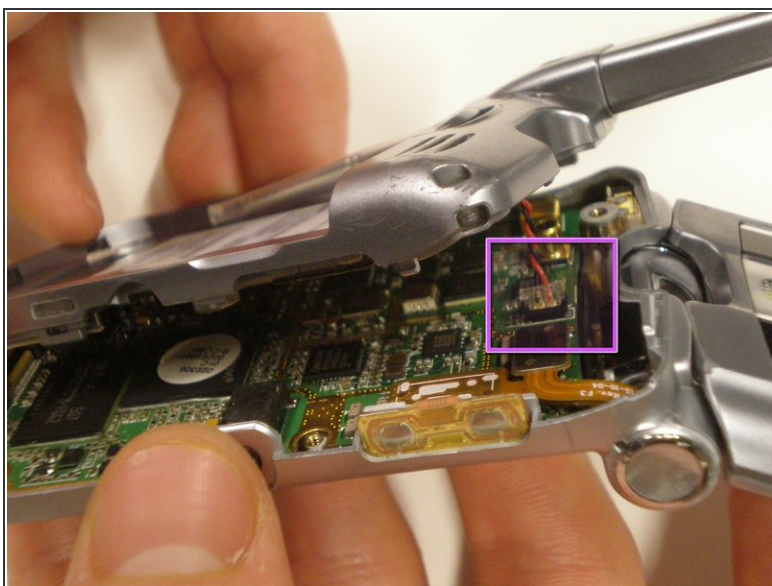
- Remove all the screws with a size 00 screwdriver. There are five screws total. Four are easily visible on the four corners of the back plate. The fifth is located in the upper left corner of the device.
- ⓘ The screws are may be slightly magnetic and will want to stay in place. You may have to pry them out, but be careful not to lose any of the screws.

Step 3



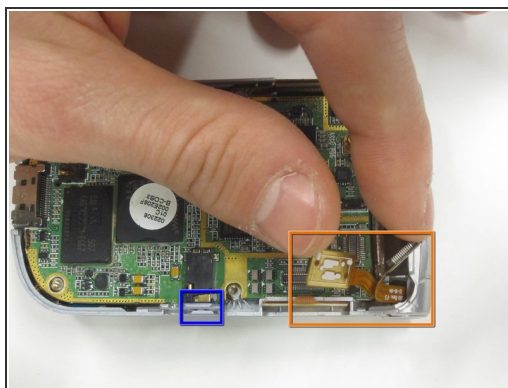
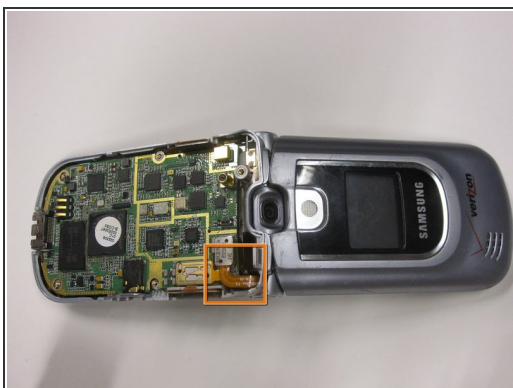
- Once all the screws are removed, slowly and carefully lift off the back plate. Do this by inserting a spudger between the front and back plates of the device on both sides of the phone.
 - Once back plate is lifted, the small, silver volume and camera buttons located on the sides of the device will fall off. They are only connected to the phone by the back plate. Remove and do not lose these pieces.
 - Locate the cover of the head phone jack. The cover is silver and circular and has a headphone image on the front of it. Open the cover to the headphone jack and peel it off the device. Do not lose this piece.
- ⚠ Be careful when taking the shell apart, as the wire that connects the external speaker and the logic board can break if too much force is applied.

Step 4



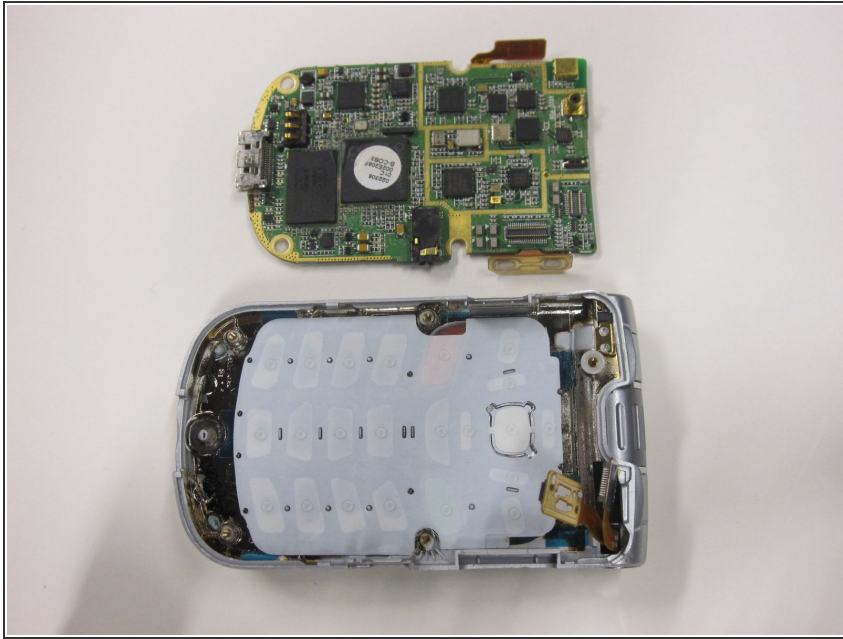
- Gently unplug the external speaker wire from the logic board. After the wire is unplugged the back cover should come off easily.

Step 5 — Logic Board



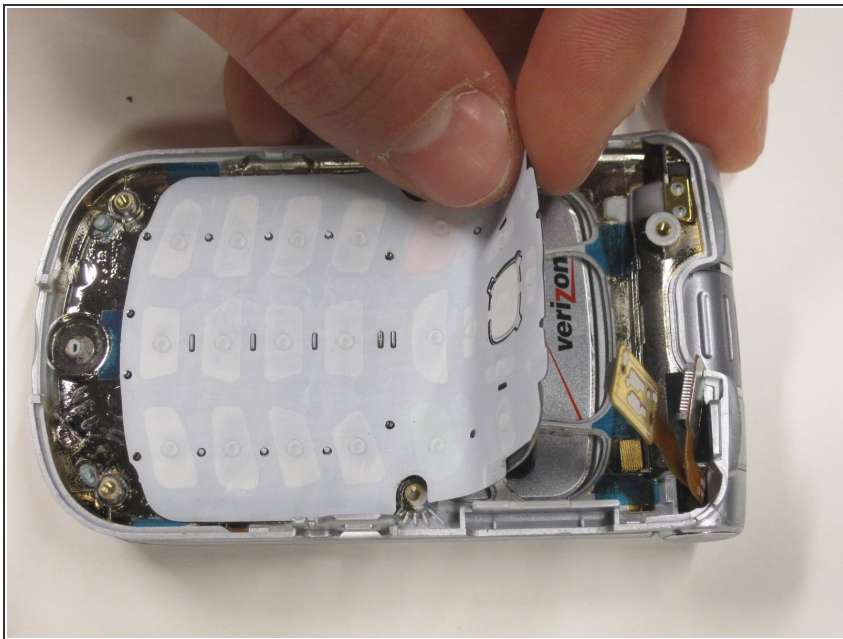
- To disconnect the logic board from the main body, unplug the gold ribbon from its outlet.
- The logic board fits to the casing by the headphone jack. Simply slide it out of place and remove it from the device.

Step 6 — Keypad



- Once logic board is removed, the back of the Keypad will be visible.

Step 7



- Pull out Key Pad using your fingers to get leverage.

Step 8



- Once the key pad is removed, clean off dust or loose particles.
- Make sure the key pad is dry before reintroducing it to the phone. Once a new or cleaned keypad is placed in the cell phone, all keys should work properly.

To reassemble your device, follow these instructions in reverse order.