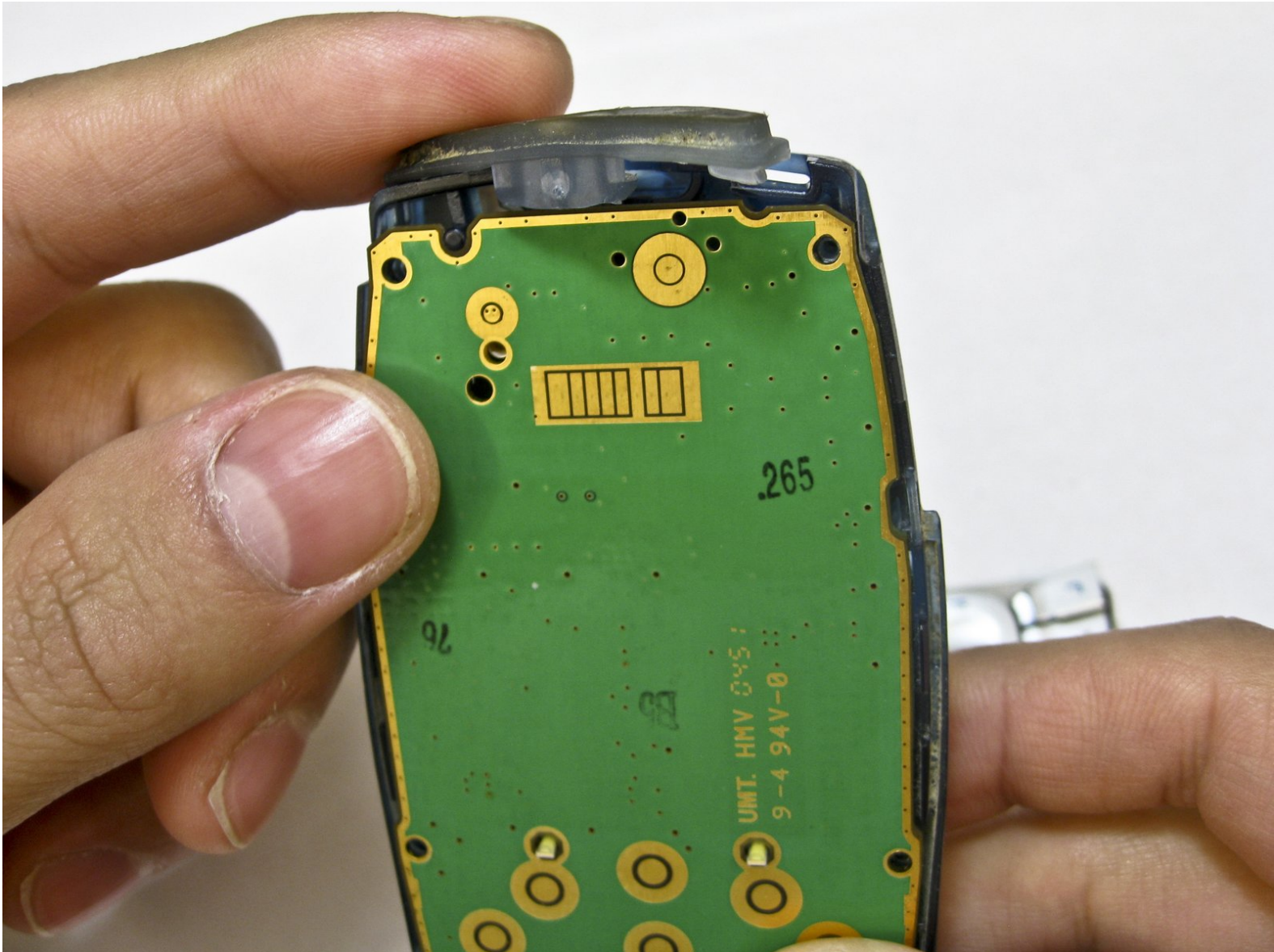




# Nokia 6010 motherboard replacement

Written By: Nicholas Hanne



---

## INTRODUCTION

Use this guide to remove and replace the Nokia 6010's logic board.



### TOOLS:

- [Spudger](#) (1)
  - [T6 Torx Screwdriver](#) (1)
-

## Step 1 — Battery



- Press the small tab on the bottom of the back of the phone.
- Push the back case upward towards the power button. The back case will then pop off.

⚠ It requires some force, so be careful.

## Step 2



- Lift the battery near the bottom and pry up.



### Step 3 — SIM Card



- With one hand, press the ridged tab near the visible side of the SIM card.
- Slide the card out with your other hand.

### Step 4 — Keypad



- Grip the phone on either the sides, the top, or the bottom.
- Pull the front case away from the rest of the phone.
- ❗ There are no special tabs to keep it in place so it should wiggle free easily.

## Step 5



- Lift the keypad away from the body of the phone.
- ⓘ The keypad is the rubber-backed piece with the number keys.

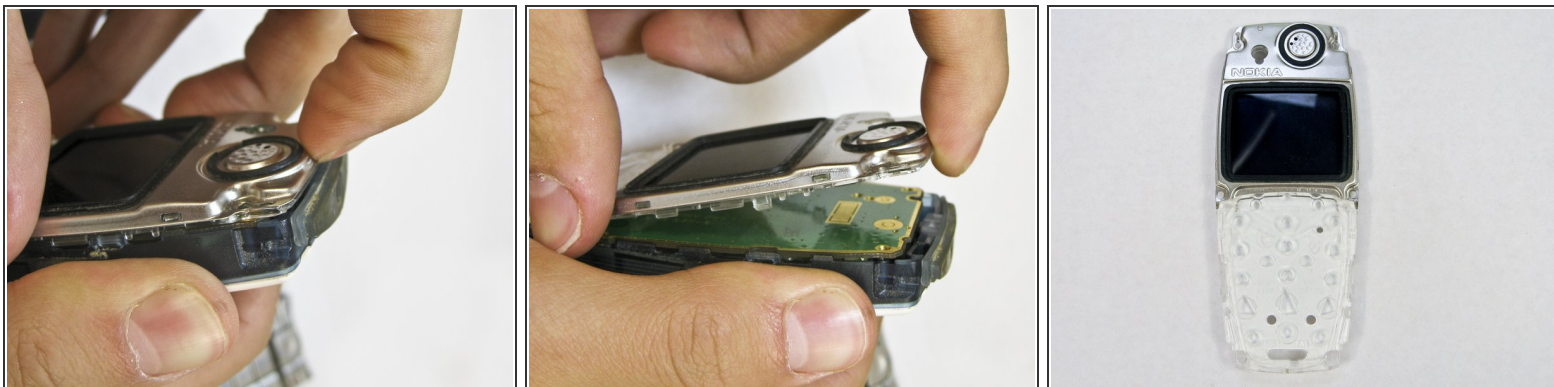
## Step 6 — LCD Screen and Speaker



- Remove the six screws around the front of the phone body with a T6 screwdriver.



## Step 7



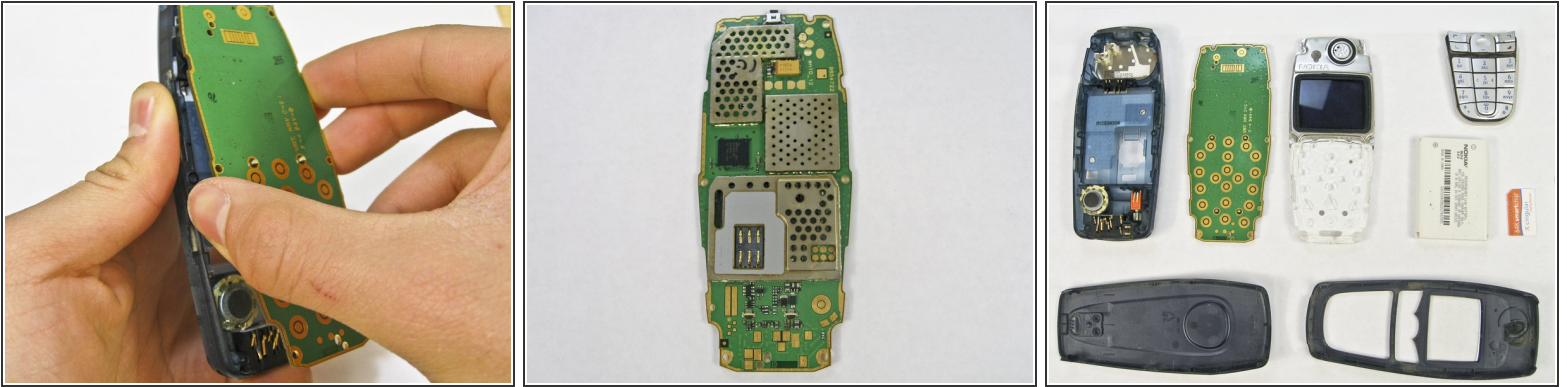
- Insert your finger underneath the speaker piece and pry away from the phone body.
  - ⚠ The plastic layer containing the LCD screen and speaker takes some force to remove.
- ⓘ There are 4 plastic tabs which keep it in place, but they are hard to press. Be careful and go tab by tab or use a spudger if you are nervous about using too much force.
- ⓘ The LCD and the speaker are attached to the same piece and must be replaced together.

## Step 8 — Logic Board



- Slide the rubber power button away from the body of the phone.
- ⓘ The power button is the rubber piece on the top of the phone.

## Step 9



- Insert a finger between the phone body and logic board.
  - ❗ The logic board is the green plastic piece with circuitry attached.
- Pull the board away gently.
  - ⚠ The board is delicate and contains electronic parts. Be careful while removing it.

To reassemble your device, follow these instructions in reverse order.