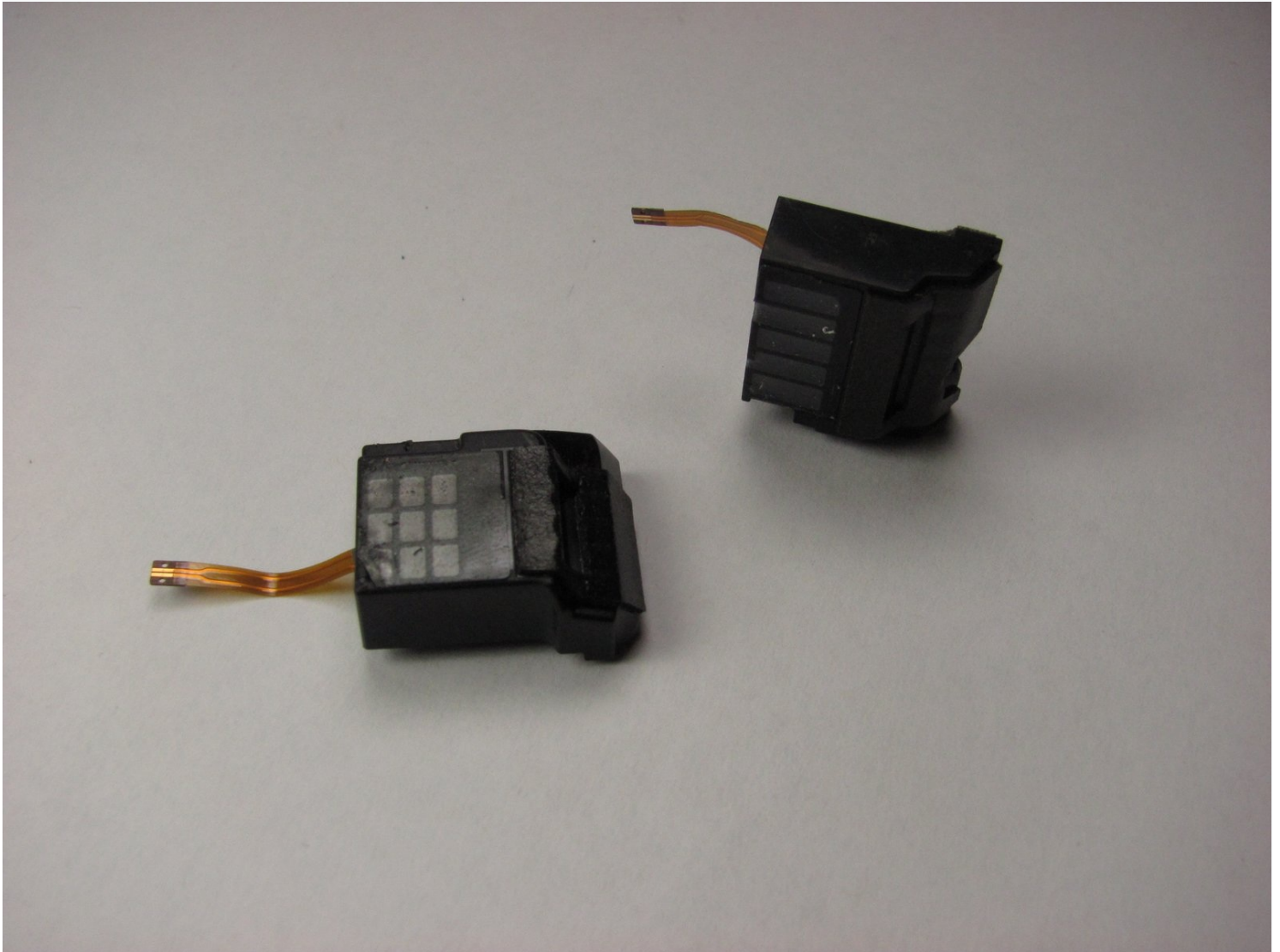




# Microsoft Surface Pro Speaker Replacement

Use this guide to replace the left and right...

Written By: Jonathan Choi



# INTRODUCTION

Use this guide to replace the left and right speakers in the Microsoft Surface Pro.

## TOOLS:

[iOpener](#) (1)

[iFixit Opening Picks \(Set of 6\)](#) (1)

[T3 Torx Screwdriver](#) (1)

[T2 Torx Screwdriver](#) (1)

[Tweezers](#) (1)

[Spudger](#) (1)

## Step 1 — Display



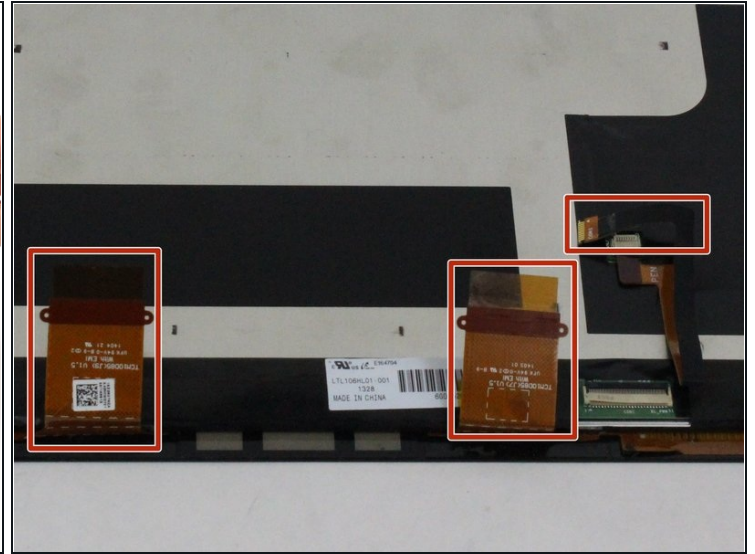
- Use a heated [iOpener](#) or a heat gun to heat the edges of the display and soften its adhesive.
  - ⓘ If you're using an iOpener it may take several cycles of reheating and applying it to soften the adhesive enough. Every time, let the iOpener sit on the display for at least a minute before reheating to allow the adhesive to soften.

## Step 2



- Apply a suction cup as close as possible to the edge of the display.
  - Use the suction cup to lift the edge of the display enough to insert an opening pick under the edge.
  - Slide the opening pick all the way around the edges of the display to cut through the adhesive on the bezel.
- ⚠ Do not insert the opening pick past the bezel of the display—you may permanently damage the display.
- ⚠ Be very careful and move slowly during this step. The display is fragile and will crack if too much force is applied against it. If your tools seem stuck, apply more heat to further soften the adhesive.

### Step 3



- Starting from the top edge, lift the display slightly. If you feel any resistance, use heat and an opening pick to slice through any remaining adhesive.
- Before completely removing the display, disconnect the three display cables.

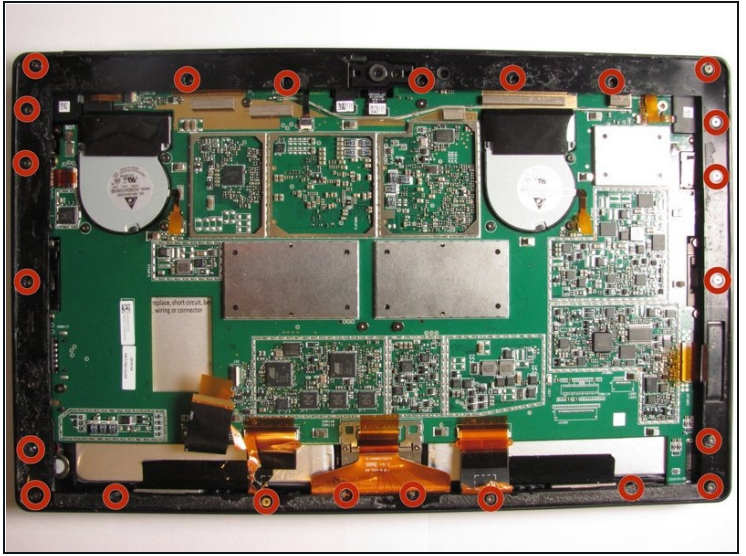
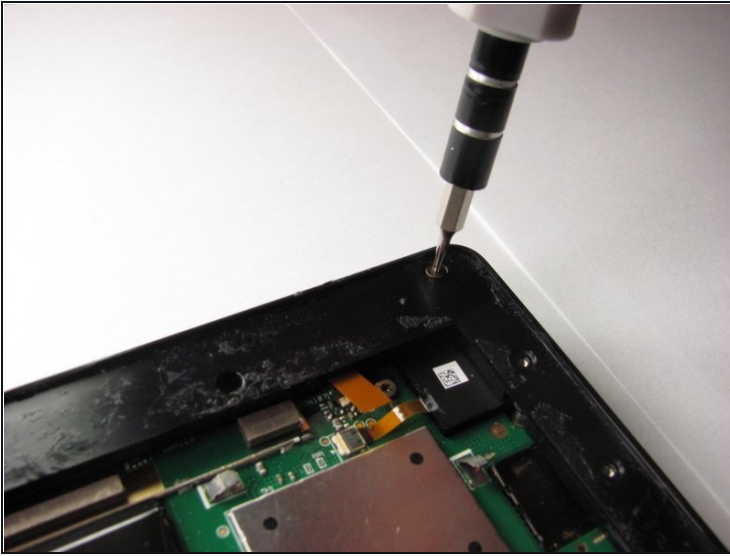
### Step 4



- Remove the display.

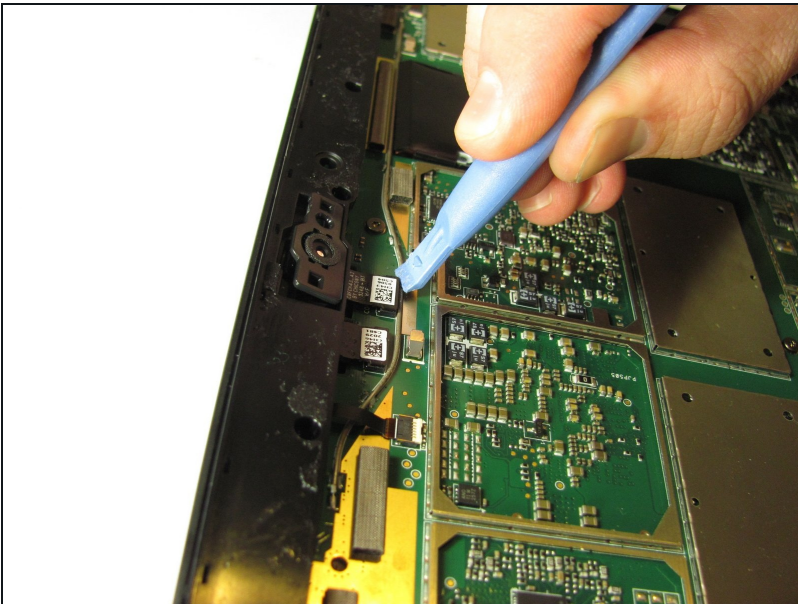


## Step 5 — Speaker



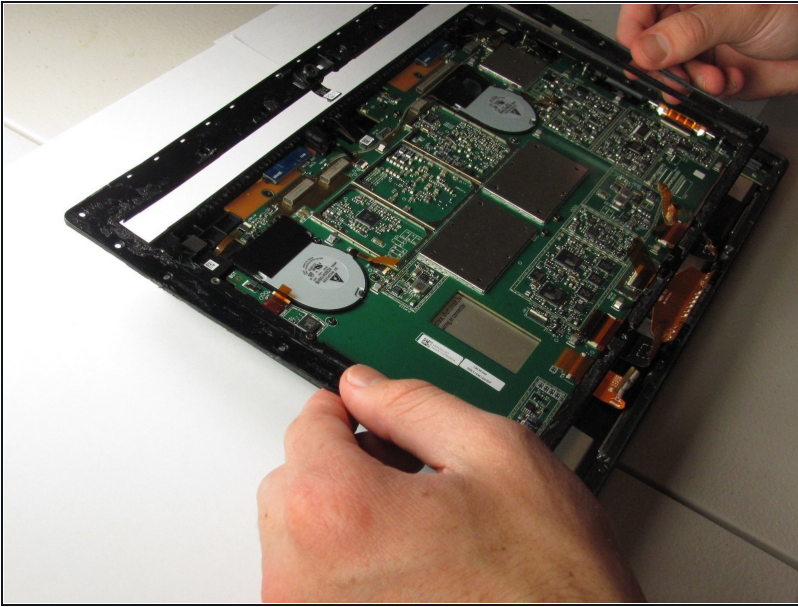
- Unscrew all the 23 screws located on the outside panel with the T5 torx screw driver

## Step 6



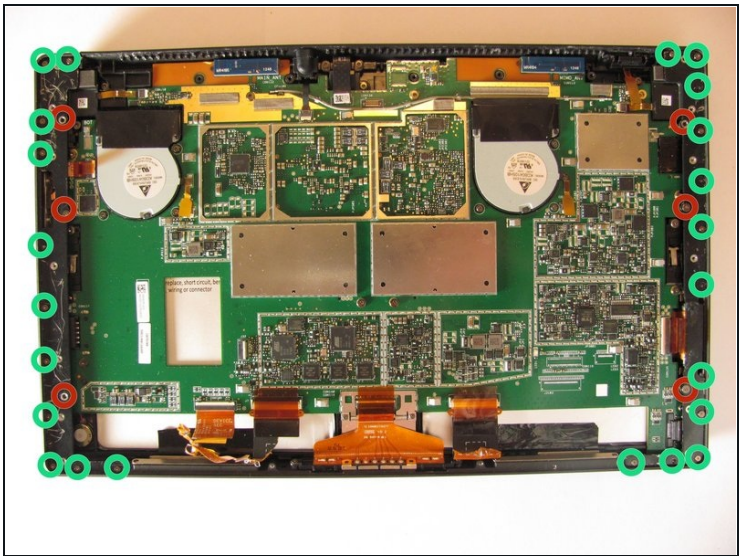
- Use the plastic opening tool to pry out the cameras

## Step 7



- Pull the outside panel with your hands from the Surface Pro

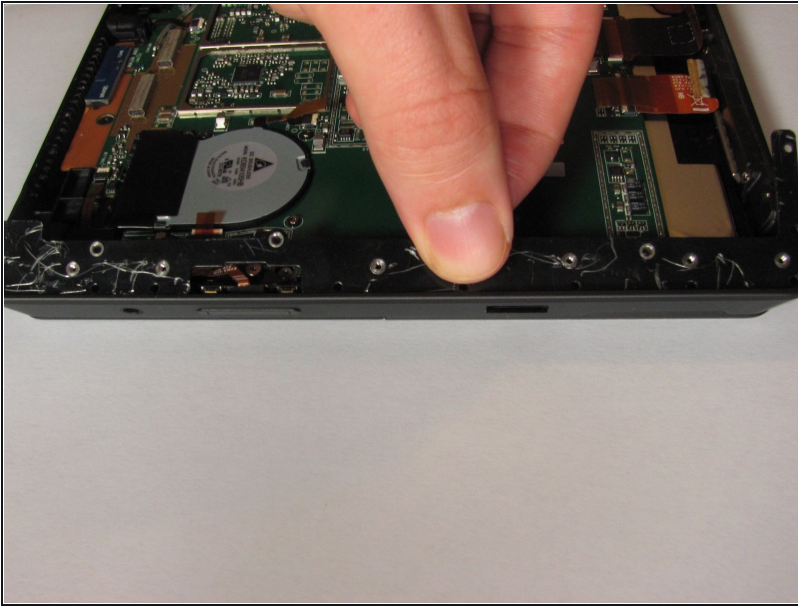
## Step 8



- Use the T5 torx screw driver to unscrew the 6 T5 screws located on the left and right metal panels
- Use the T2 torx screw driver to unscrew the 23 T2 screws located on the left and right metal panels

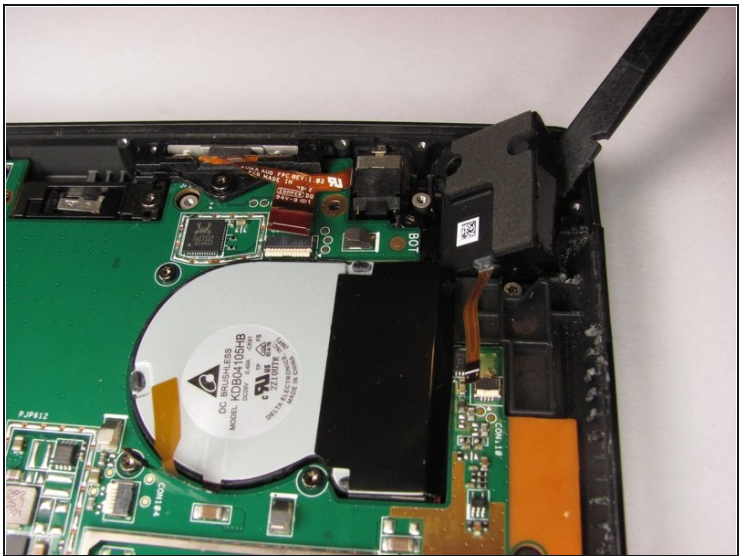


## Step 9



- Gently pull out left and right metal panels with hands

## Step 10



- Disconnect the two speakers with [tweezers](#)
- Gently pry out the speakers with spudger

---

To reassemble your device, follow these instructions in reverse order.