



Replacing Toshiba NB205 N330PK Power Button

This guide outlines how to remove the power button (6 Steps).

Written By: Mason McCaskill

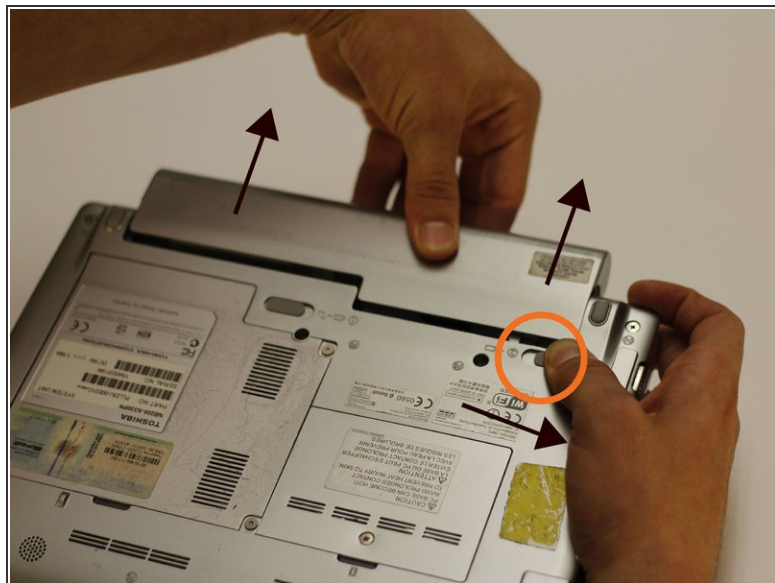




TOOLS:

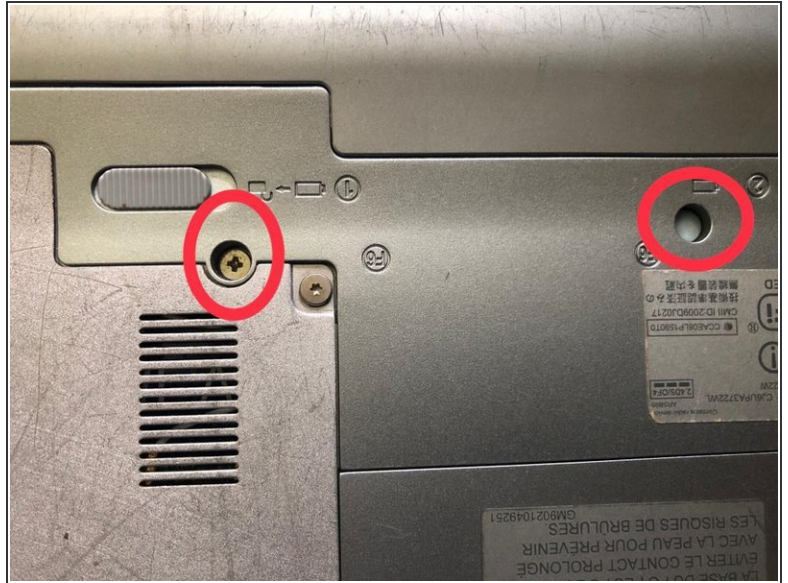
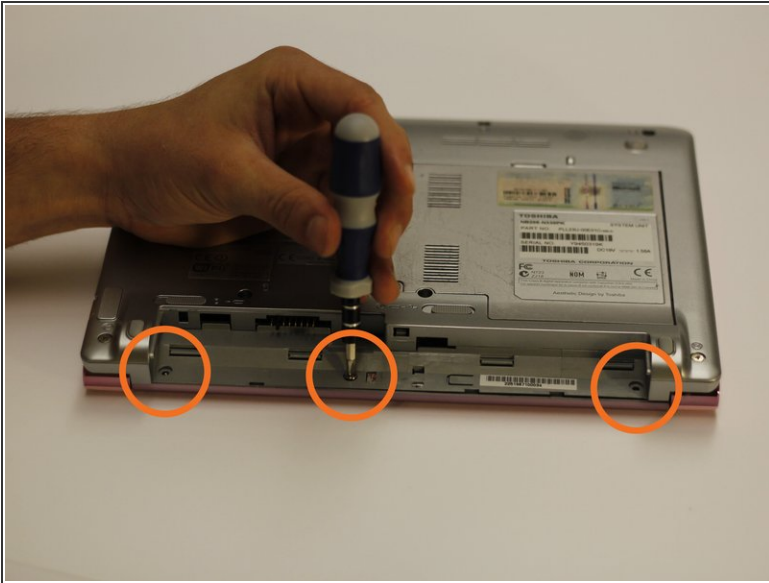
- [Phillips #0 Screwdriver](#) (1)
 - [64 Bit Driver Kit](#) (1)
-

Step 1 — Power Button



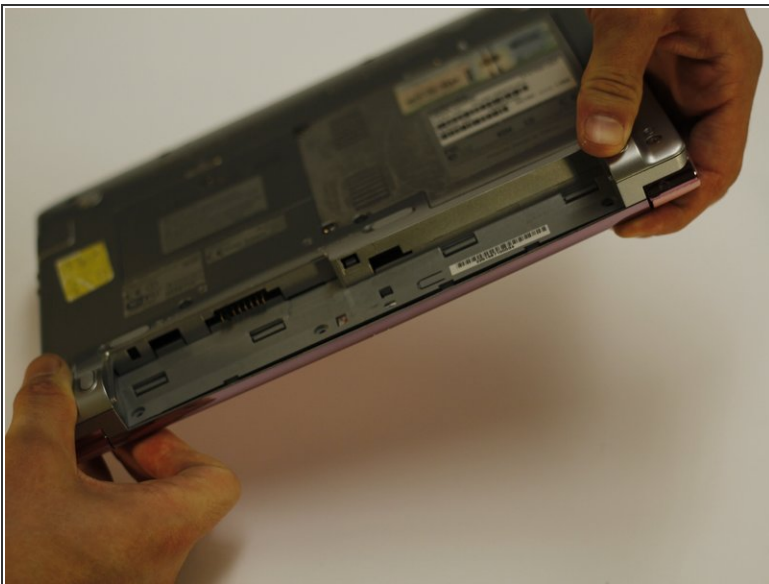
- Start by first removing the battery.
- Move the first release switch to the right position.
- Move the second release switch to the right position while pulling the battery towards the top of the netbook.

Step 2



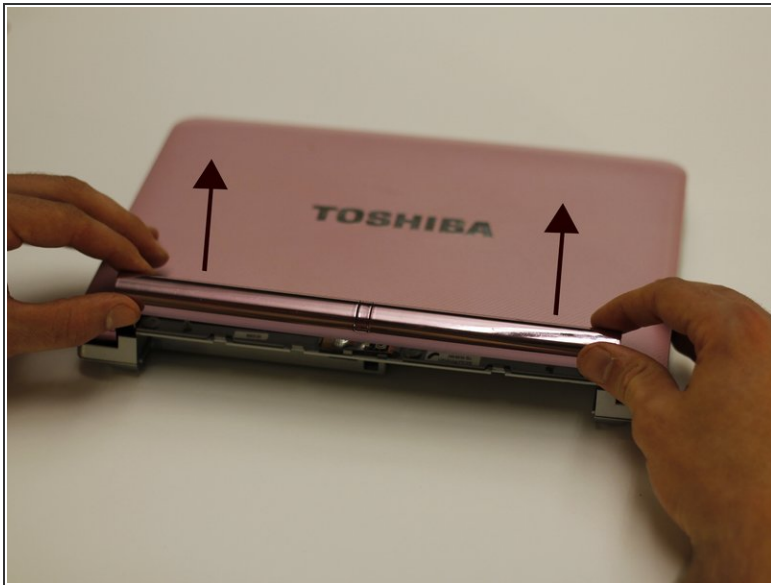
- Using the bit driver and a Phillips #0 bit, remove the three circled screws, 5 mm in length.
- Using the bit driver and a Phillips #0 Bit, remove the two circled screws labelled F6. (These hold the keyboard) one screw may be under a rubber stopper

Step 3



- While holding the top of the netbook, flip the netbook over.

Step 4



- Carefully lift off the power bar assembly for access to the button and receiver.

To reassemble your device, follow these instructions in reverse order.