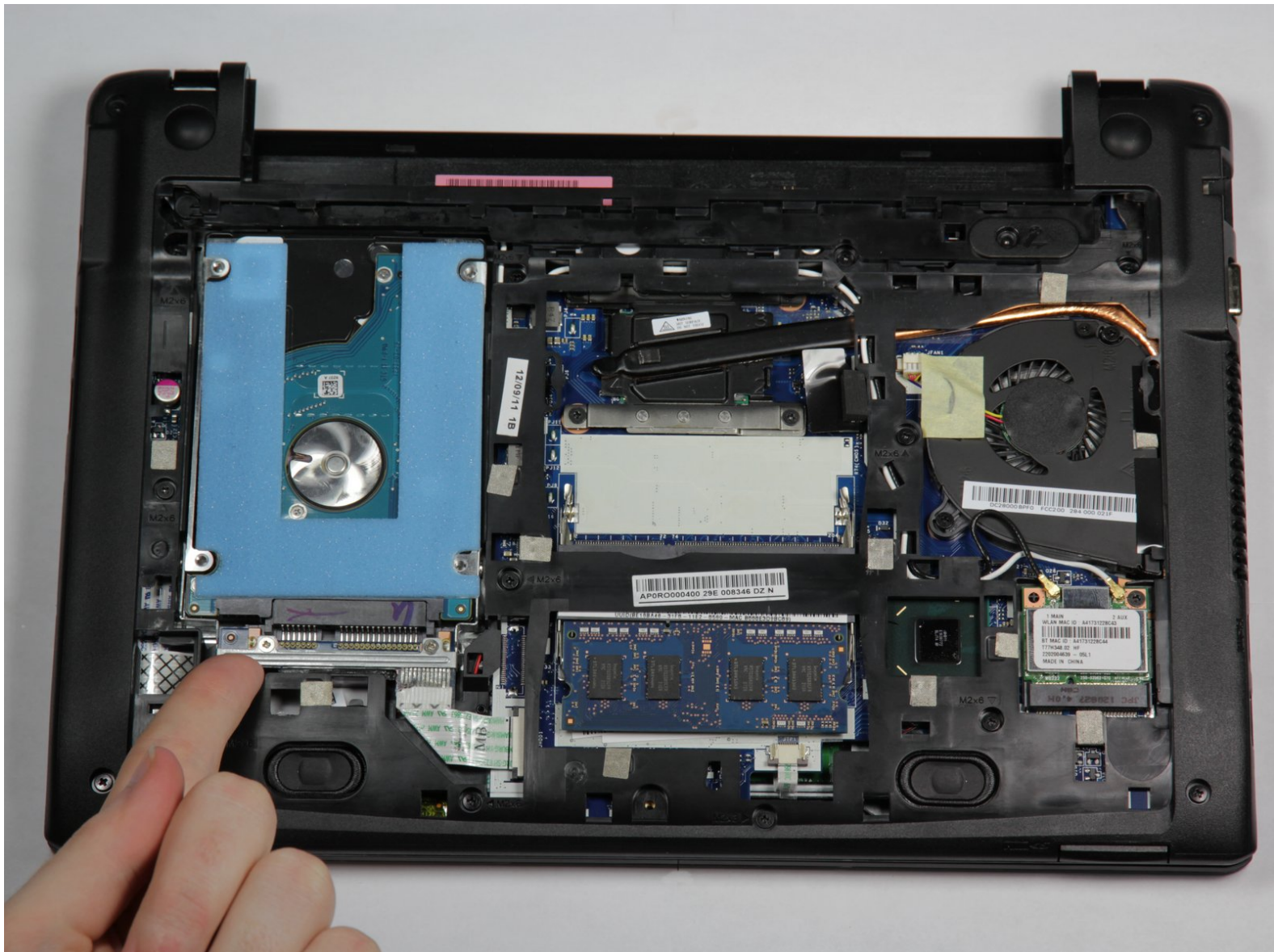




# Acer Chromebook C710-2847 Hard Drive Replacement

This guide will show you how to replace the hard drive.

Written By: Bradley Pavy



## INTRODUCTION

If you experiencing problems listed in the [troubleshooting guide](#), you can replace the hard drive. The hard drive stores the operating system (Chrome OS), along with saved files and pictures. Installing a new hard drive will require [reinstalling Chrome OS](#) and backing up your local files.



### TOOLS:

- [Phillips #0 Screwdriver](#) (1)
- [Spudger](#) (1)



### PARTS:

- [Acer Chromebook C710 Hard Drive Connector Board](#) (1)
- [Acer Chromebook C710 SSD Caddy + Connector](#) (1)

## Step 1 — Battery



- Place the laptop on a flat surface with the bottom side facing up.
- Place the tip of a spudger or finger into the hole on the battery release slider.

## Step 2




- Use the spudger to move the slider to the right and hold it there.
- With the slider held, use your other hand to pull the battery back away from the laptop.



### Step 3 — Acer Chromebook C710-2847 Back Cover Replacement



 This step will void your device warranty.

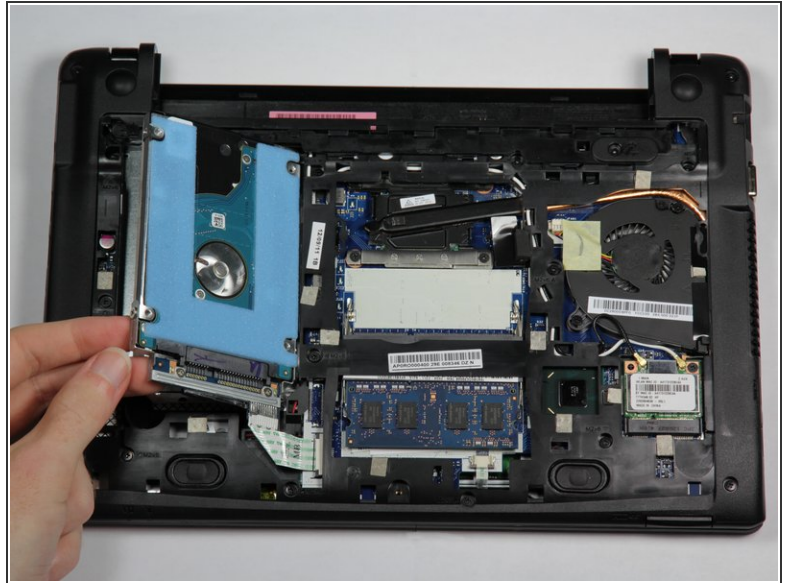
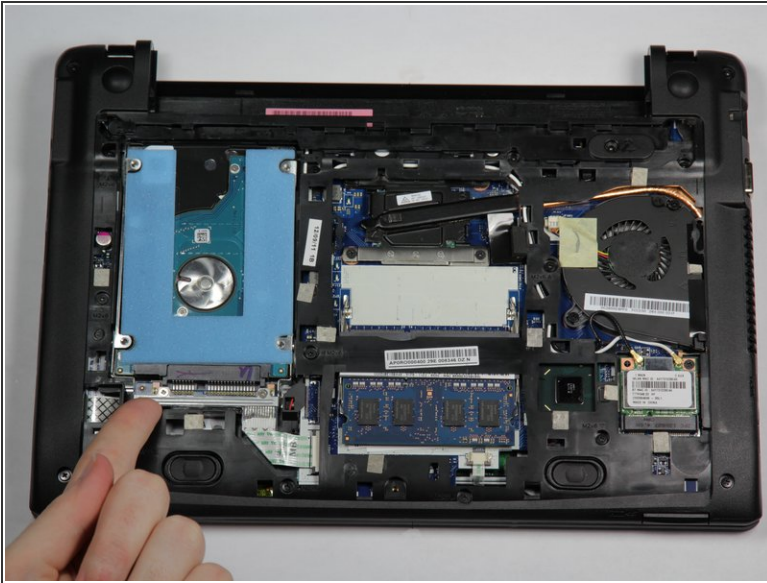
- Use the screwdriver to pierce the warranty sticker.
- Unscrew and remove the #0 6mm Phillips screw and set it aside.


### Step 4



- Slide the back panel towards you. The best spots to place your fingers are on the bumpers.
- Lift on the front edge to remove the panel.

## Step 5 — Hard Drive

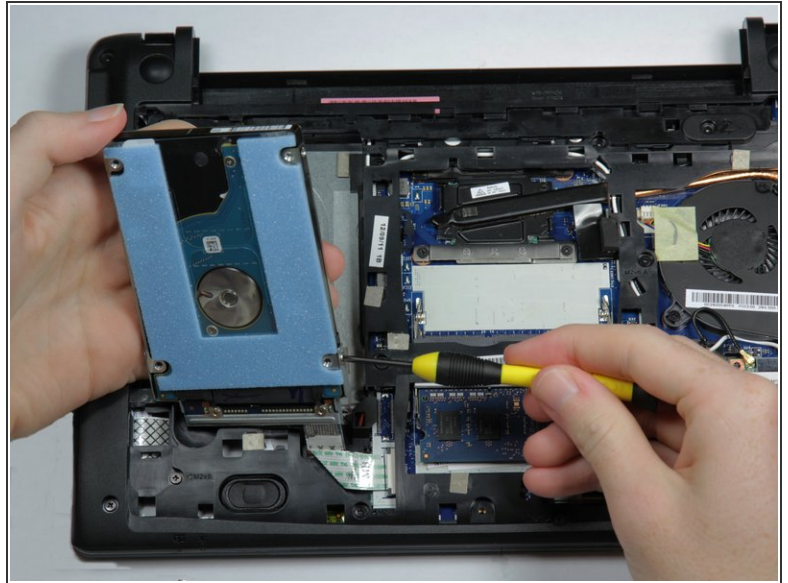
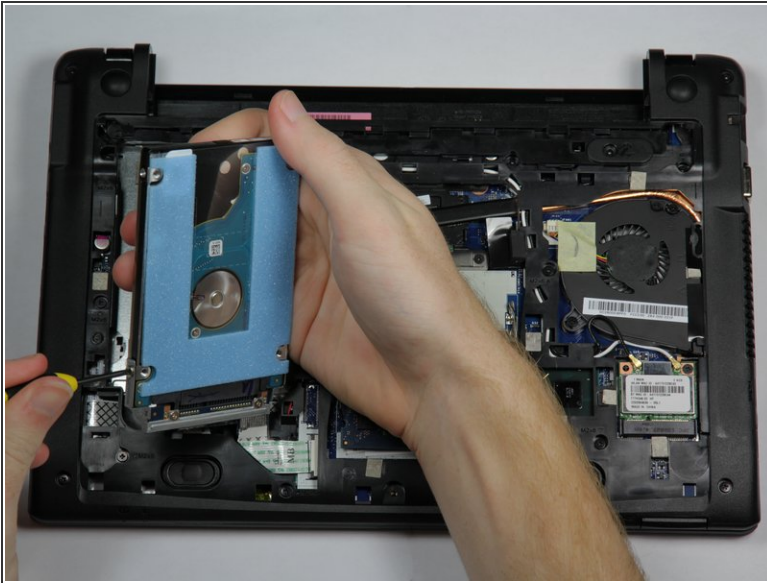


 The hard drive assembly is attached to the laptop by a ribbon cable. Only lift the side of the drive facing you about an inch above the laptop. If you tear the ribbon cable the laptop will need to be serviced by a professional.

- Use one finger to lift up the hard drive assembly from the bottom left corner.

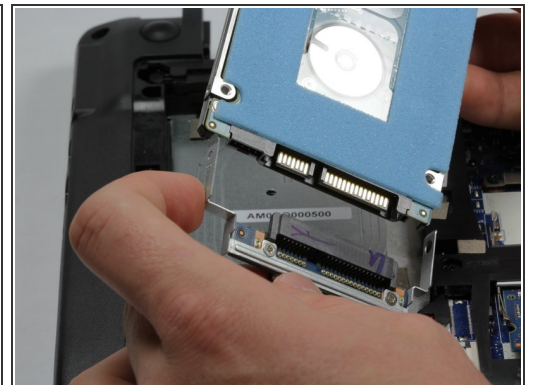
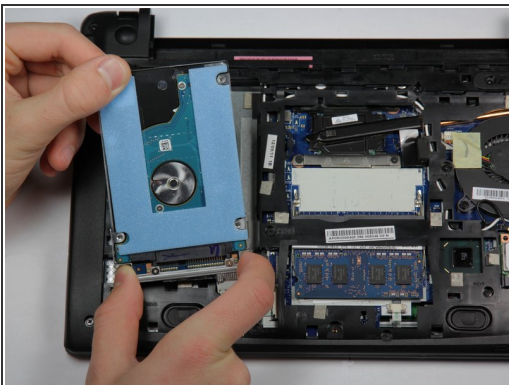


## Step 6



- Hold the hard drive assembly keeping the end closest to you near the laptop. It's ok to tilt the far end of the drive up towards you.
- Unscrew the two silver #0 3mm Phillips screws on the left and right sides of the hard drive.

## Step 7



- Hold the base of the hard drive in your right hand.
- Use your left hand to pull the hard drive away from its housing. Don't let the housing tug on the ribbon cable.

To reassemble your device, follow these instructions in reverse order.