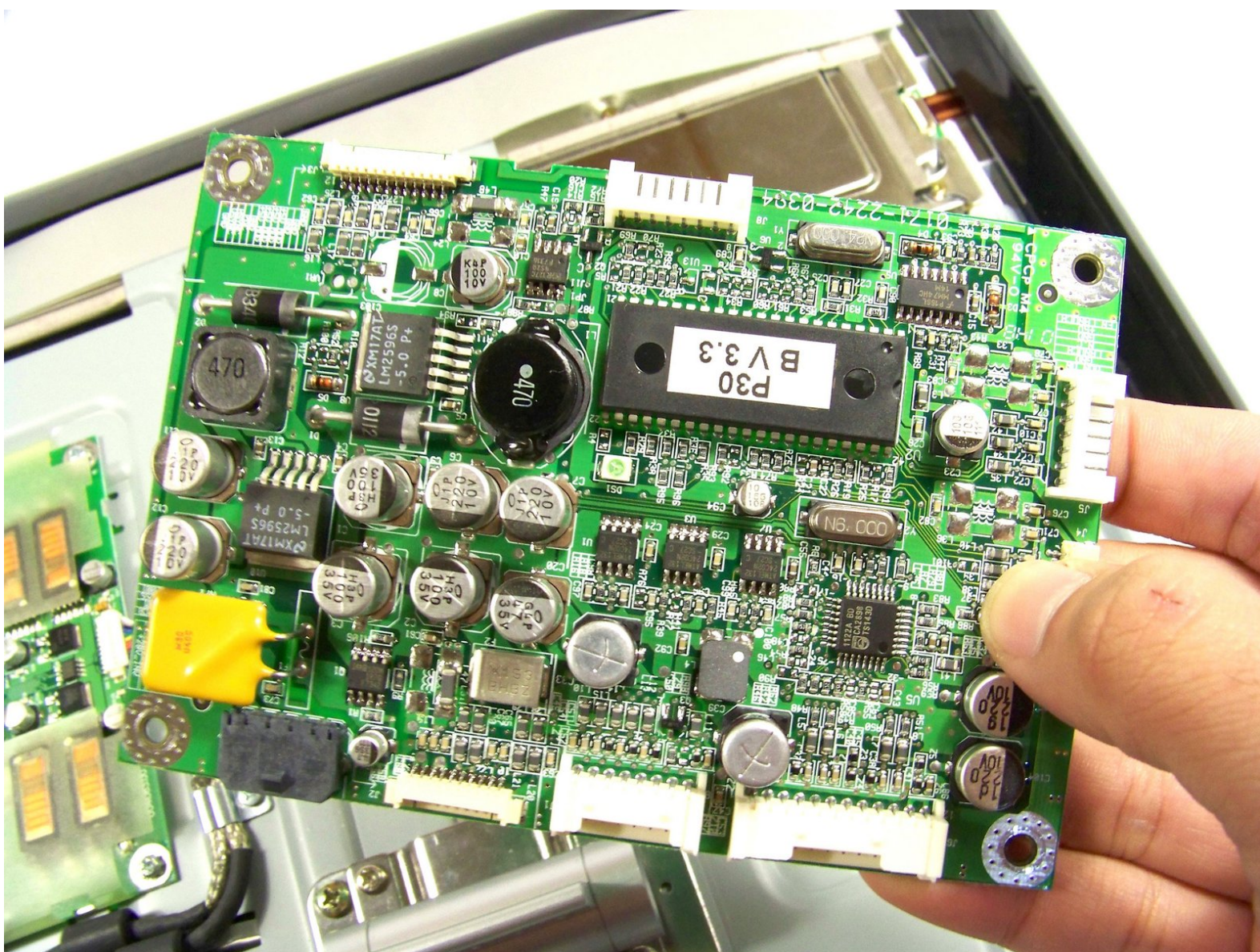




Apple Studio Display M7649 Logic Board Replacement

Written By: Andrew Tsao



INTRODUCTION

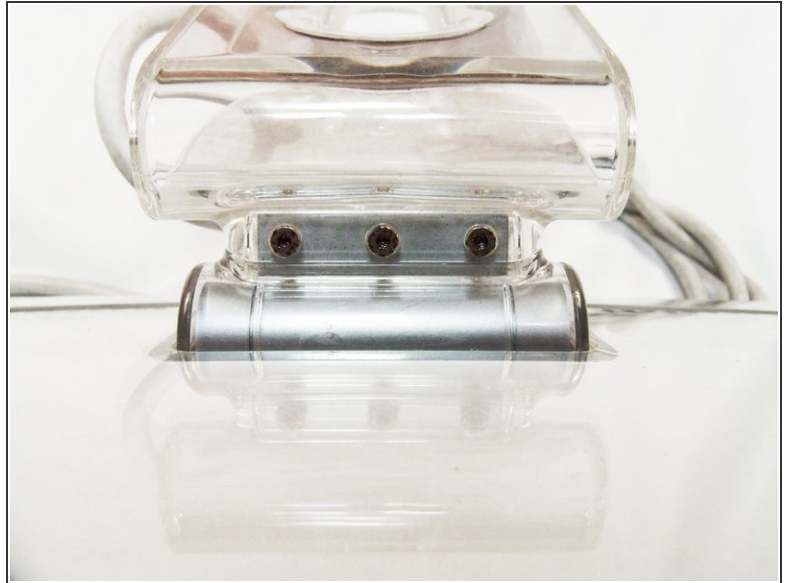
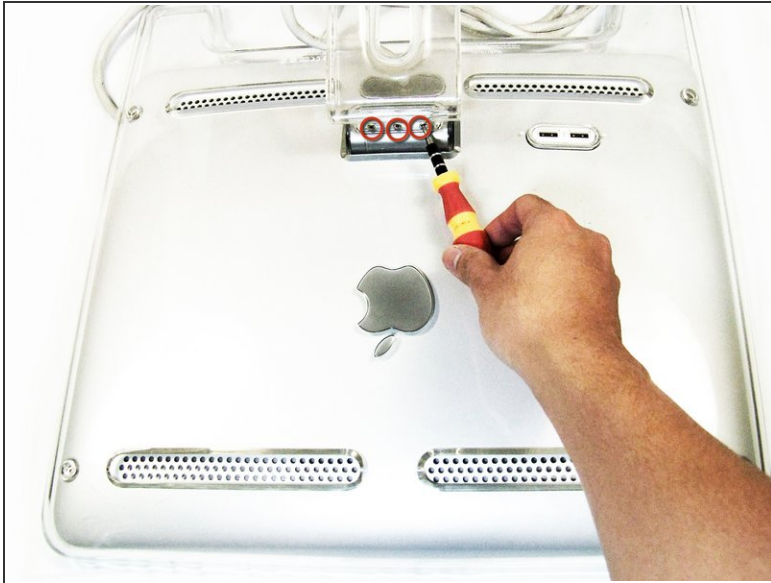
How to remove and replace the logic board. The logic board is like the main cpu of the display.



TOOLS:

- [2 mm Hex Screwdriver](#) (1)
 - [Phillips #00 Screwdriver](#) (1)
-

Step 1 — Stand



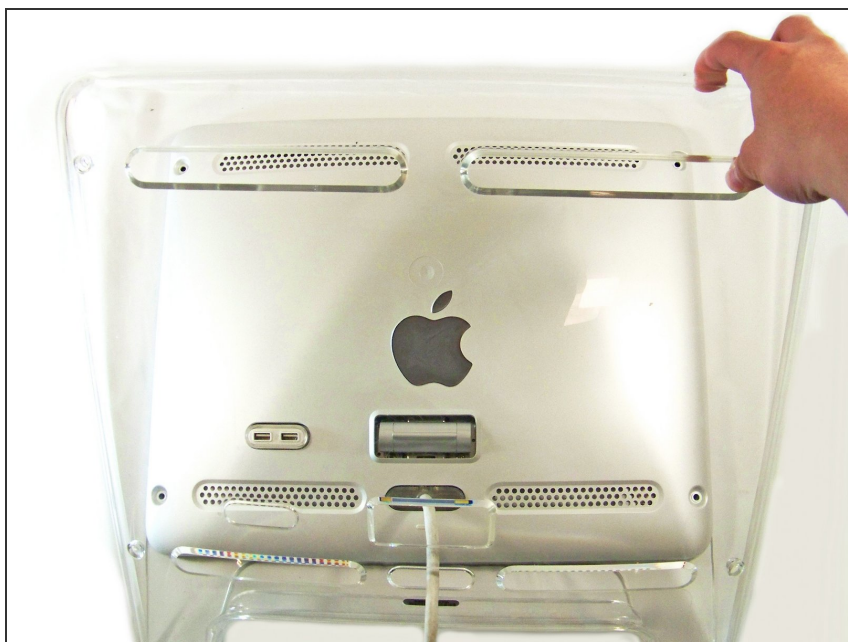
- Lay the display facing down with the stand away from you.
- Remove the three size 2.0 hex screws on the swing arm and remove the swing arm as well as the plastic shield under it.

Step 2 — Panels



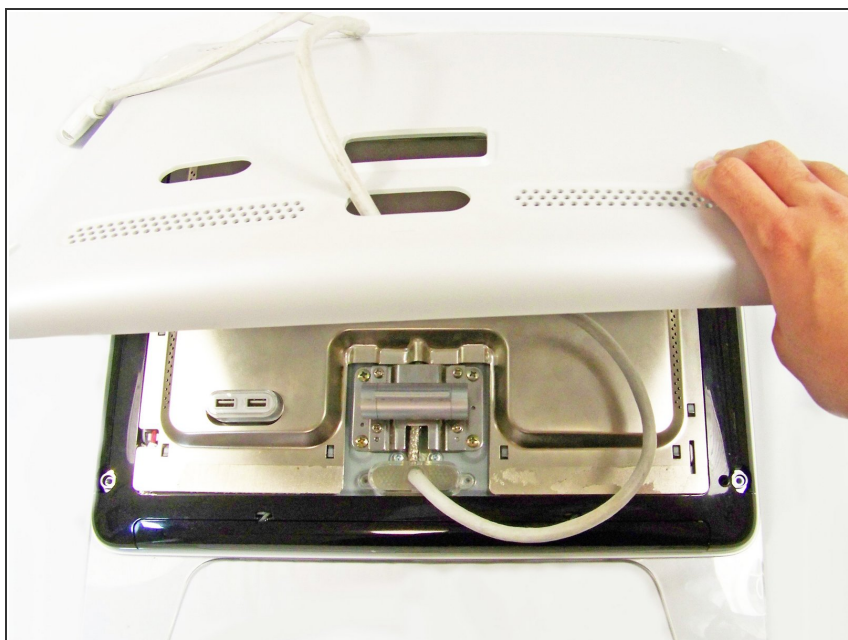
- Remove the size 2.5 hex screws from each corner that connects the panels to the display and remove them.

Step 3



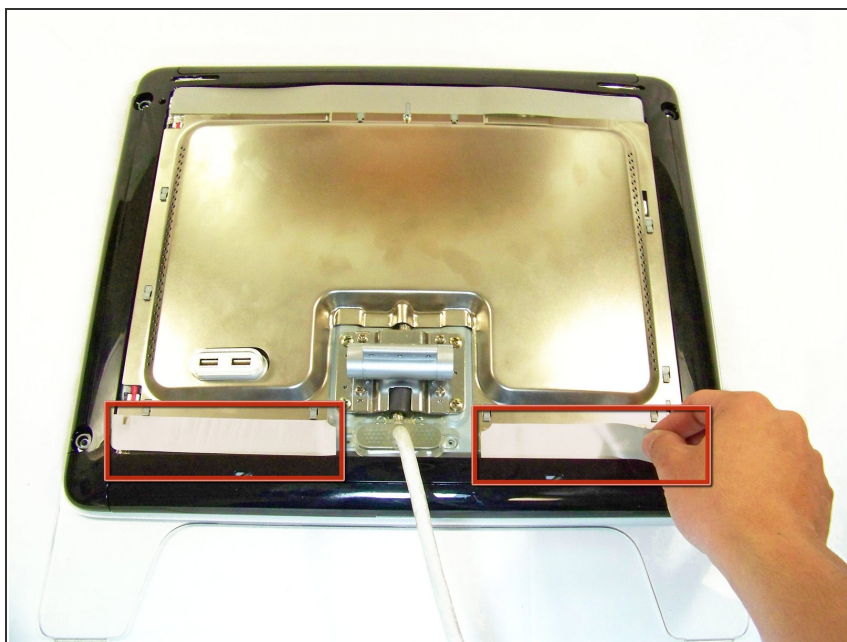
- Rotate the display so the legs of the display are now facing you
- Grip the top of the clear panel and lift it upwards, and pull the ADC cable through the hole.

Step 4



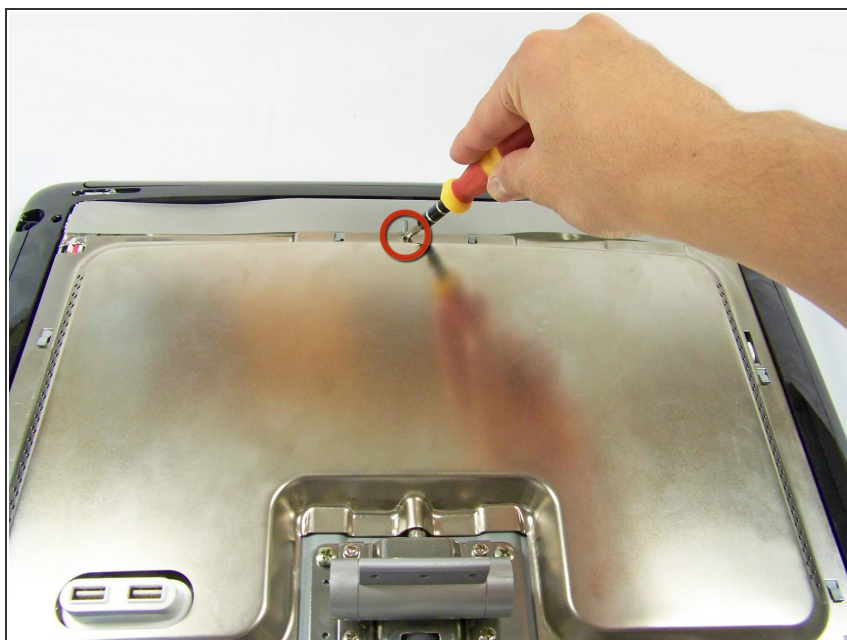
- Remove the grey back panel by lifting the bottom and pulling the ADC cable through the hole.

Step 5 — Metal EMI Shield



- The next layer will be a shiny metal panel, which might have some stickers. Make sure to remove these stickers.

Step 6



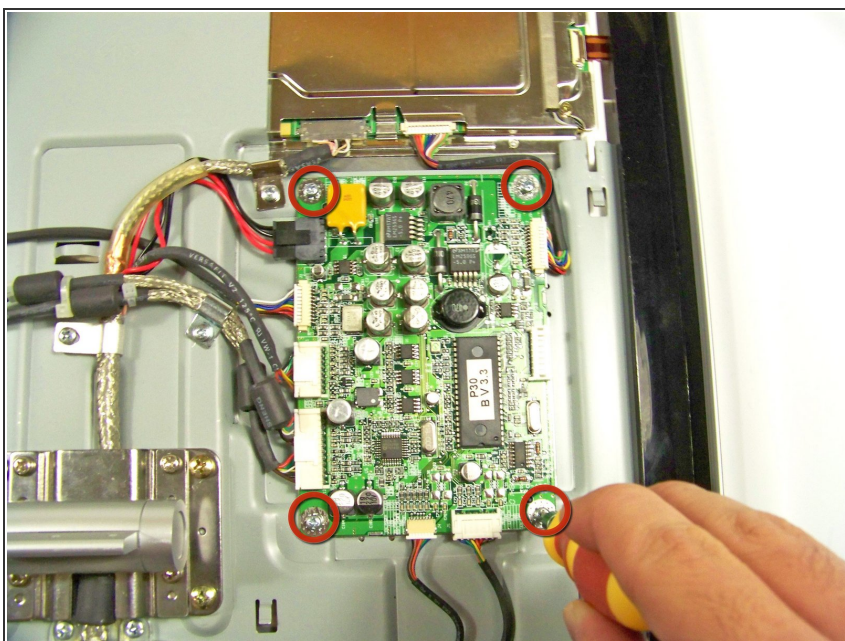
- Now locate and remove the lone Phillips screw holding the EMI shield to the display

Step 7



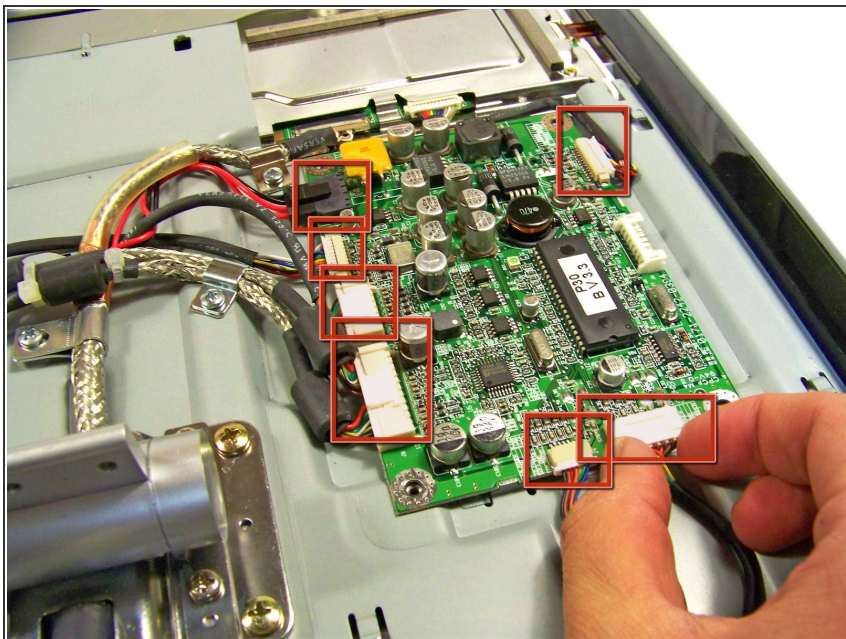
- Now that the screw has been removed, slide the panel towards your body and lift it out.
- ⓘ You may need to remove the clear USB port cover to remove the metal EMI shield.

Step 8 — Logic Board



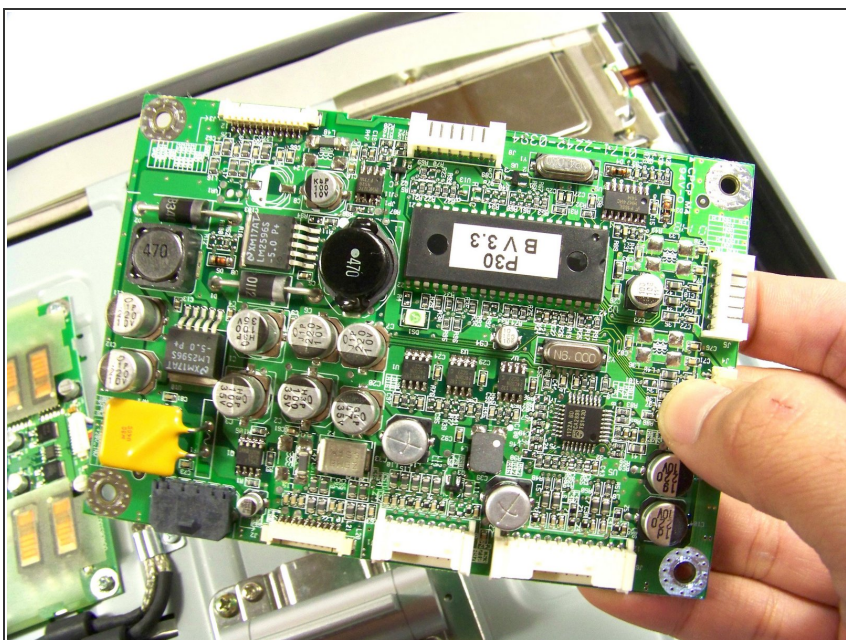
- Remove the four screws holding the logic board to the display

Step 9



- Remove these seven cables connected to the logic board.
- ⓘ There is an extra connection that no cable plugs into. This connection is for Apple to test their logic boards

Step 10



- Remove and replace the logic board.

To reassemble your device, follow these instructions in reverse order.