



Repairing Nintendo Game Boy Advance SP 32-pin cartridge connector

DISCLAIMER: In this guide you're actually going...

Written By: denova



INTRODUCTION

DISCLAIMER: In this guide you're actually going to be popping the cart reader's pins out of their intended positions. It's a messy fix and it makes inserting and removing cartridges very difficult. I have also only tried this on one gameboy. So far it has been reading cartridges flawlessly, but I have only been testing it for one day. Only perform this fix on a gameboy if you're willing to risk destroying it.

UPDATE: After more than a year my gameboy is still reading cartridges, and removing the cartridges has become much easier over time. I still recommend the fix.

TOOLS:

Phillips #00 Screwdriver (1)

Tri-point Y1 Screwdriver (1)

Step 1 — Battery



- Use a standard Phillips #00 screwdriver to loosen the 4 mm screw that keeps the battery cover attached to the device.

Step 2



- Lift the battery cover up and remove it from the device.

i The screw will remain attached to the battery cover because of Nintendo's design.

Step 3



- Use your fingers or a plastic opening tool to remove the battery from the device.

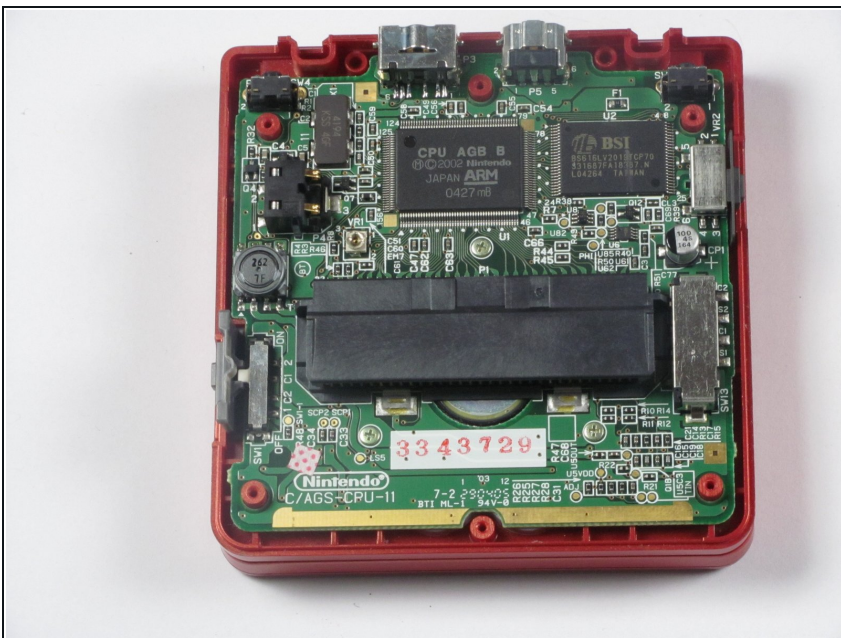
⚠ Caution: Please exercise caution when handling the battery. If it appears to be swelling or damaged at all it is considered a fire hazard.

Step 4 — Back Cover



- Remove four 6.5 mm screws from the corners of the back cover using a tri-point Y00 screwdriver.
- Remove two 4.6mm screws from the top-center and bottom-center of the device using a tri-point Y00 screwdriver.

Step 5

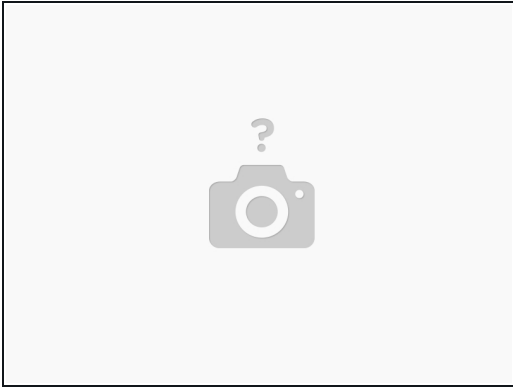


- Lift the back cover off of the device.

⚠ Potential for device damage: These inner components are vulnerable to static electricity. Exercise caution when handling these next steps to prevent damaging the device.

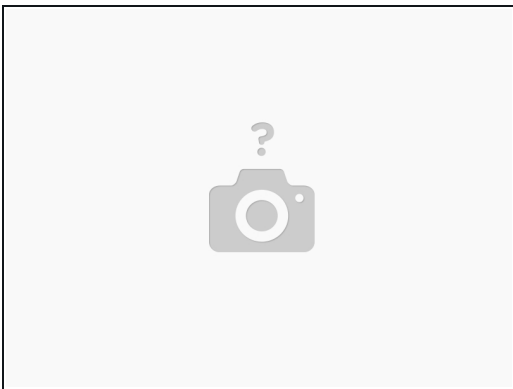
- ☑ Look out for the power switch that can fall out when taking the back cover off.

Step 6 — Repairing Nintendo Game Boy Advance SP 32-pin cartridge connector



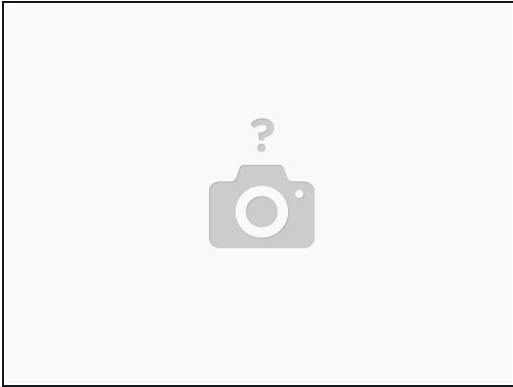
- Remove the back cover of your gameboy advance sp. When you have the internals exposed and the battery removed you'll need to grab some kind of narrow pointy tool like a bent safety pin or (thin) paper clip. Also make sure you have good light.

Step 7



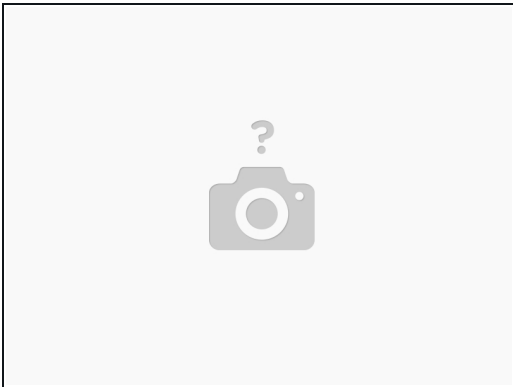
- Look inside the cartridge connector at the metal pins. See how they're all contained within a plastic housing? Each pin has its own little square. You're going to take that safety pin and pop each pin *out of its hole* and towards where the game cartridge's metal contacts would sit if it were inserted.

Step 8



- Understand that doing this to the cartridge connector will make inserting and removing game cartridges quite difficult. It is doable, but it will hurt your thumbs. Alternatively, you could try bending the pins up or out without displacing them from their plastic housing. I was not able to make this work.

Step 9



- When you've completed breaking--I mean--repairing the cartridge connector, examine the pins and make sure they are all up against the outside edge of their respective plastic squares. If they're bent too far towards where the cartridge's contacts insert, the pins will get mashed when you jam the first game cart in.

Step 10



- Now put your gameboy back together and push a game cartridge in-- *hard*. When it goes in, flip the switch on and hope for the best. Be prepared for sore thumbs when it comes time to switch cartridges. Removing them is harder than inserting.

To reassemble your device, follow these instructions in reverse order.