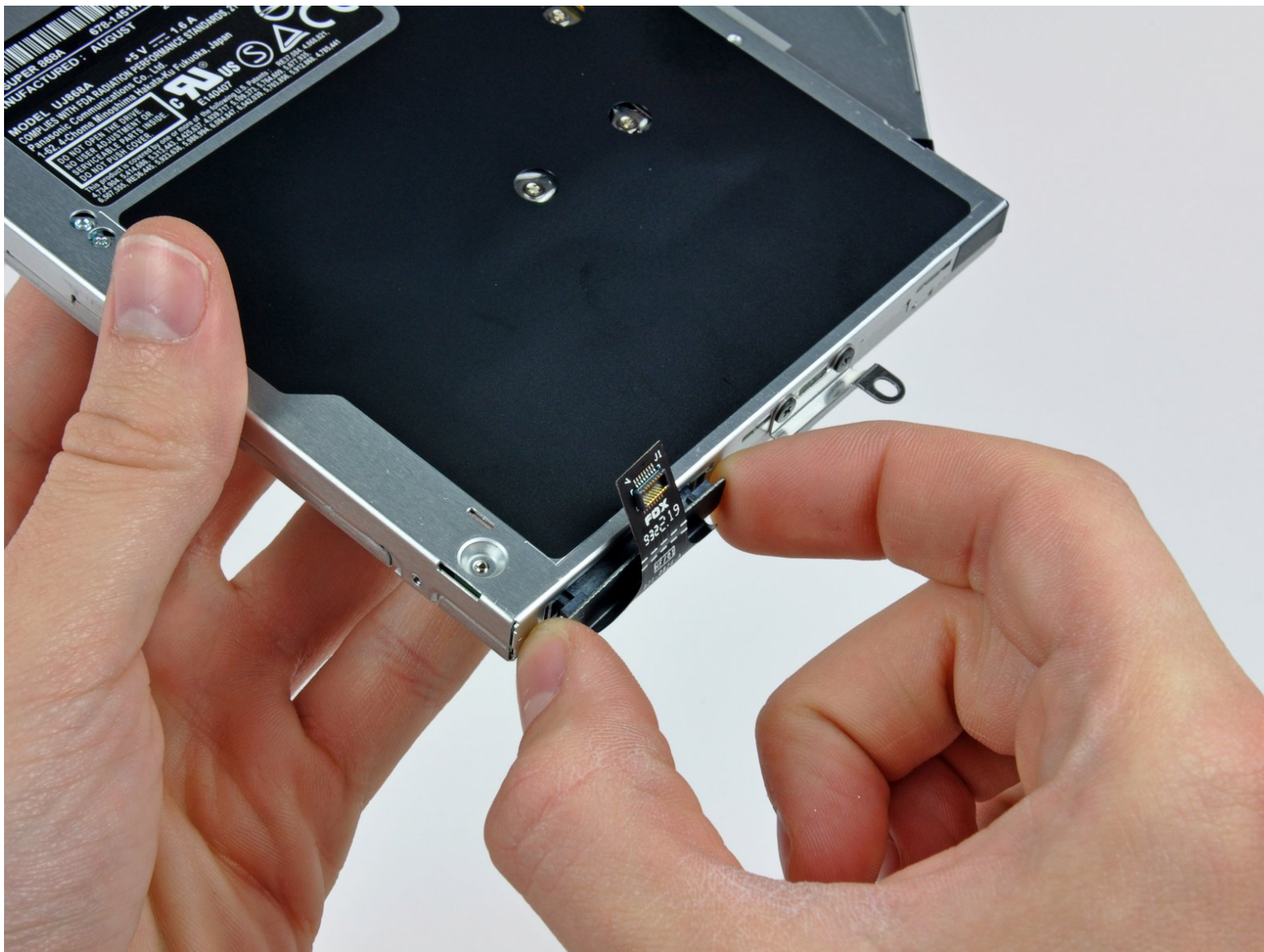




MacBook Pro 15" Unibody Mid 2009 Optical Drive Replacement

Replace the optical drive in your MacBook Pro 15" Unibody Mid 2009.

Written By: Andrew Bookholt



INTRODUCTION

MacBook Pro won't read disks? Use this guide to replace a broken optical drive.



TOOLS:

- [Phillips #00 Screwdriver](#) (1)
- [Spudger](#) (1)
- [P6 Pentalobe Screwdriver 2009 MacBook Pro Battery](#) (1)



PARTS:

- [MacBook Pro 15" Unibody \(Mid 2009/Mid 2010\) 8x SATA SuperDrive \(Used\)](#) (1)
- [MacBook Pro 15" Unibody \(Mid 2009/Mid 2012\) SATA SuperDrive Cable](#) (1)
- [Unibody Laptop Dual Drive](#) (1)
- [Unibody 8x SATA SuperDrive \(Post-Early 2009\)](#) (1)

Step 1 — Lower Case



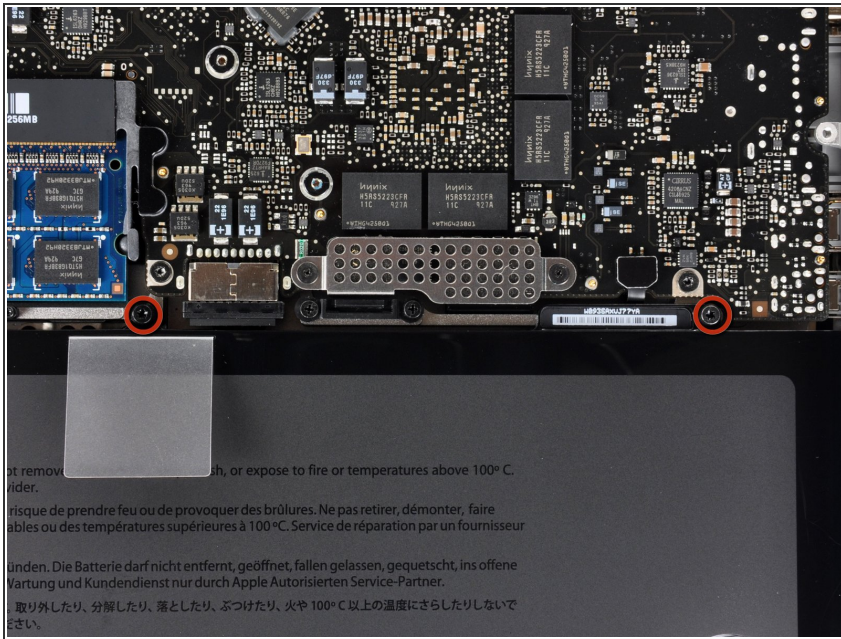
- Remove the following ten screws securing the lower case to the upper case:
 - Seven 3 mm Phillips screws.
 - Three 13.5 mm Phillips screws.

Step 2



- Using both hands, lift the lower case near the vent to pop it off two clips securing it to the upper case.
- Remove the lower case and set it aside.

Step 3 — Battery



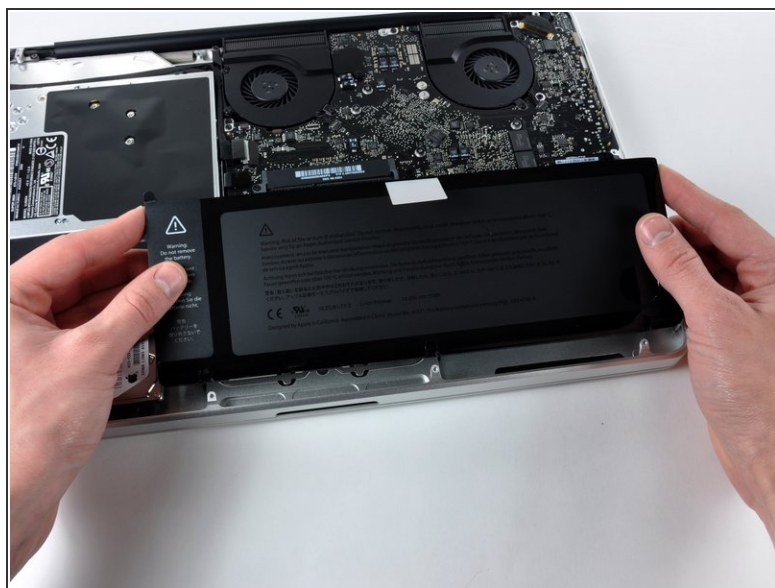
- Remove the two [5-Point Pentalobe](#) screws along the top edge of the battery.
- ⓘ You do not necessarily have to follow steps 3-6 to remove the battery in order to replace the hard drive. However it is recommended to remove all power sources from electronics before working on them.

Step 4



- Use the tip of a spudger to bend back the finger of the "Warning: Do not remove the battery" sticker while you remove third five-point Pentalobe screw hidden underneath.

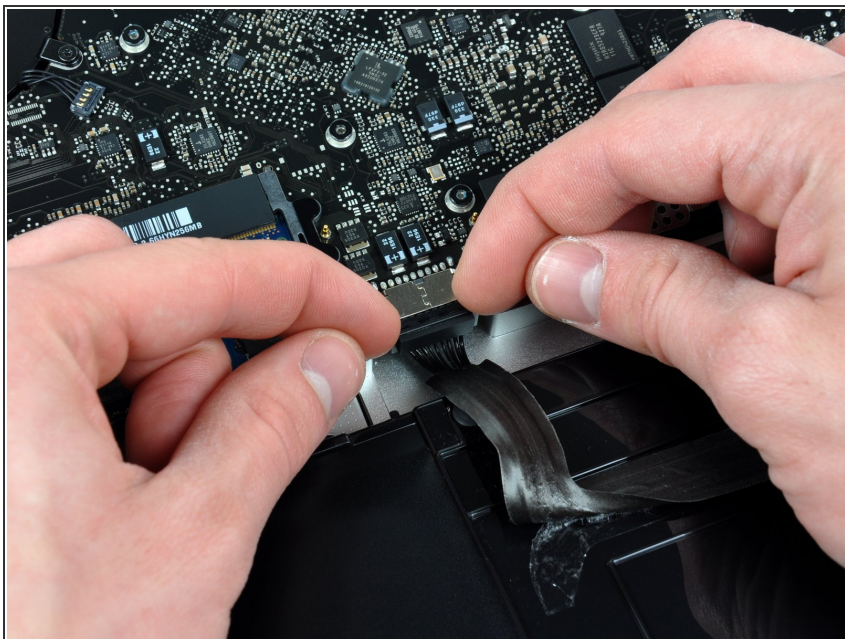
Step 5



- Lift the battery by its plastic pull tab and slide it away from the long edge of the upper case.

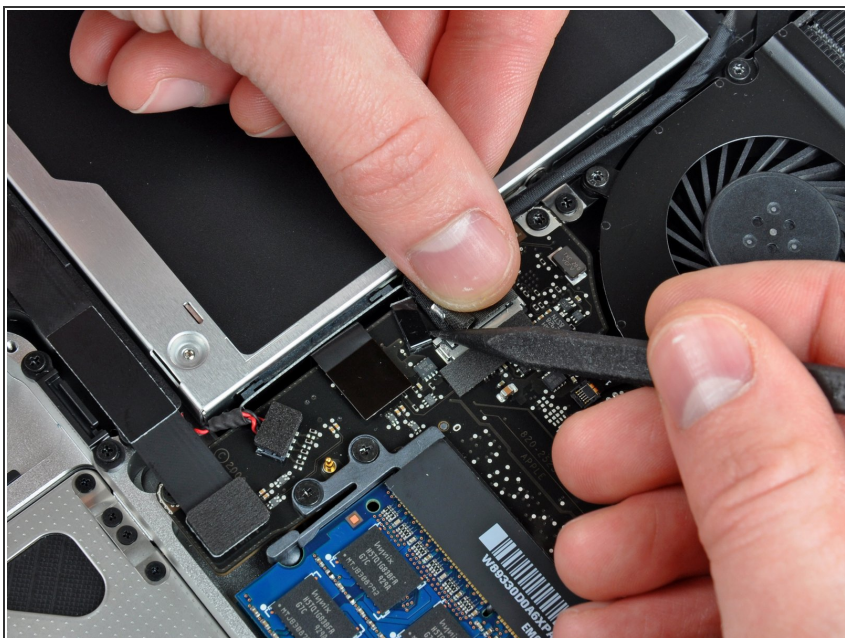
⚠ Do not try to completely remove the battery just yet.

Step 6



- Tilt the battery back enough to access the battery cable connector.
 - Pull the battery cable connector away from its socket on the logic board and remove the battery from the upper case.
- ✦ If you're installing a new battery, you should [calibrate](#) it after installation.

Step 7 — Optical Drive

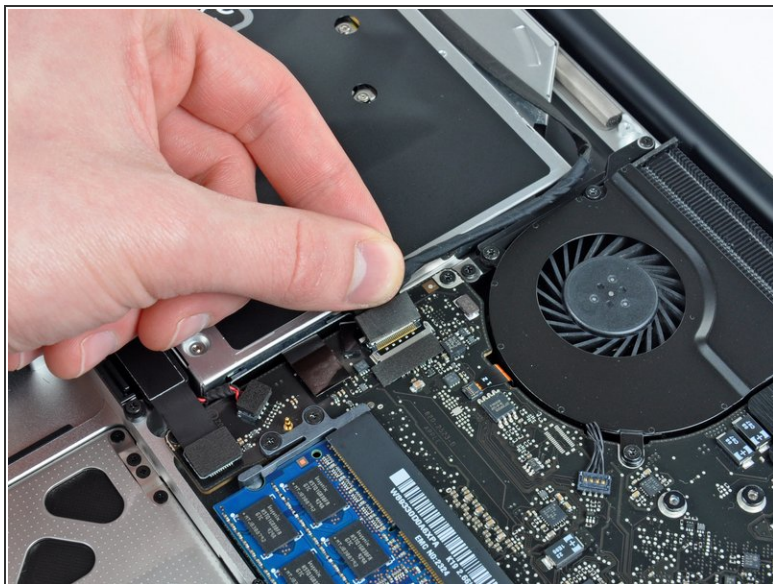
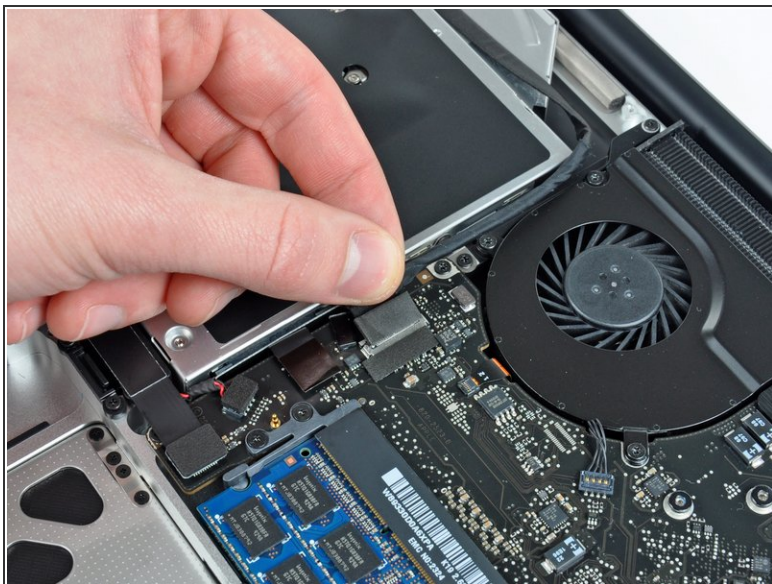


- ⚠ Apple sticks a small strip of clear plastic with adhesive applied to one side to the logic board behind the camera cable connector to keep it in its socket. When moving it out of the way, be sure not to break any surface-mount components off the logic board.

- Hold the end of the cable retainer down with one finger while you use the tip of a spudger to slightly lift the

other end and rotate it away from the camera cable connector.

Step 8



- Disconnect the camera cable by pulling the male end straight away from its socket.
- ⓘ Pull the connector parallel to the face of the logic board, not straight up.


Step 9




- Peel the camera cable off the adhesive securing it to the optical drive.

Step 10



 This step is only required if you have an anti-glare display. If you have a glossy display, skip this step.

- Disconnect the Bluetooth cable by pulling the male end straight away from its socket.

 Pull the connector parallel to the face of the logic board, not straight up.

- Use the flat end of a spudger to pry the Bluetooth antenna cable from its socket on the board.

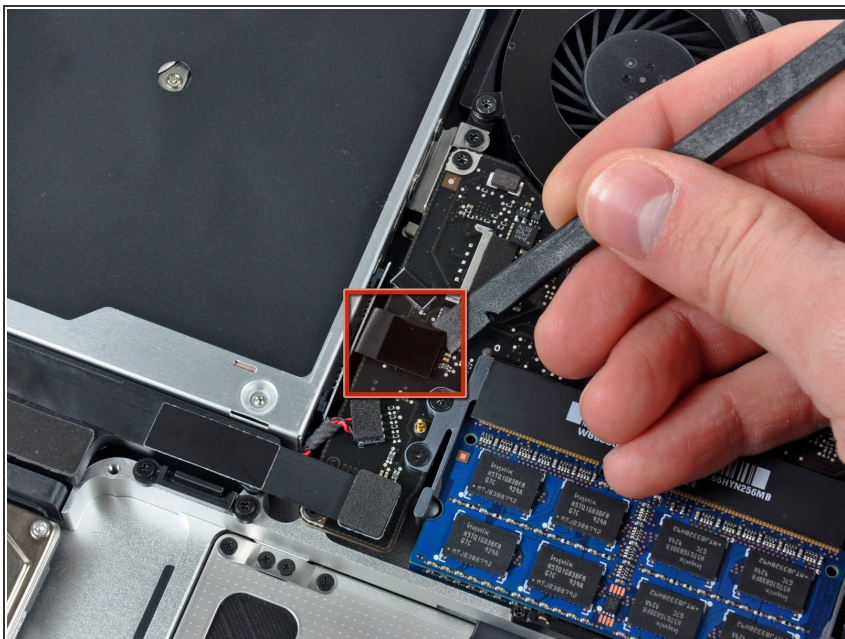
Step 11



i This step is only required if you have an anti-glare display.

- Remove the two 8 mm Phillips screws securing the Bluetooth/camera cable retainer to the upper case.
- i** One of the screws may remain captive in the Bluetooth/camera cable ground loop. If replacing the display, be sure to transfer this screw to the new unit.
- Lift the Bluetooth board/cable retainer assembly out of the upper case.

Step 12



- Use a spudger to pry the optical drive connector straight up off the logic board.

Step 13



- Remove the single 3.5 mm Phillips screw securing the inner side of the optical drive to the upper case.

Step 14



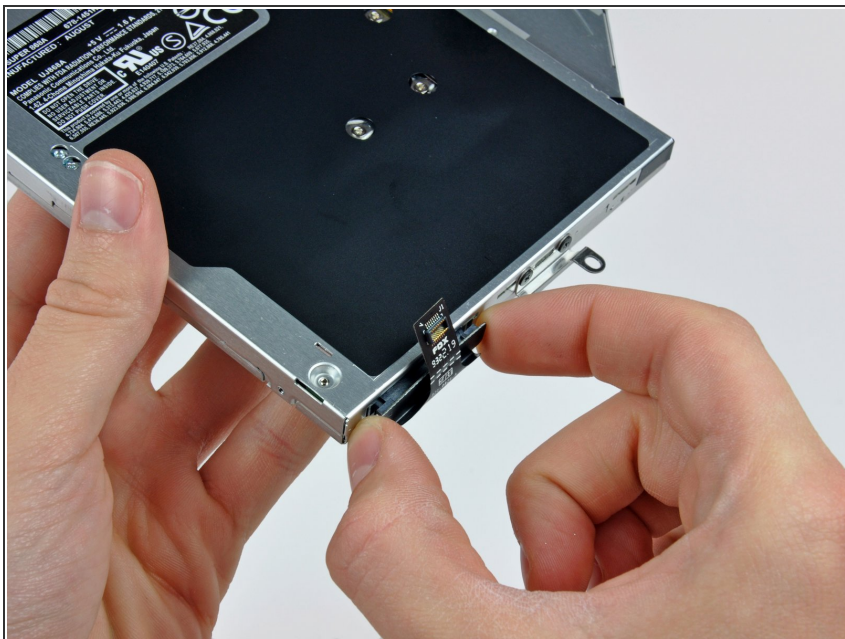
- Remove the two 3.5 mm Phillips screws securing the outer side of the optical drive to the upper case.

Step 15



- Lift the optical drive from its left edge and pull it out of the upper case.

Step 16 — Optical Drive



- Remove the optical drive cable by pulling it straight away from the optical drive.
- ⓘ If you have a CD or any other object jammed in your optical drive, we have an [optical drive repair guide](#).

Step 17



- Remove the two black Phillips #0 screws securing the small metal mounting bracket. Transfer this bracket to your new optical drive or [hard drive enclosure](#).

To reassemble your device, follow these instructions in reverse order.