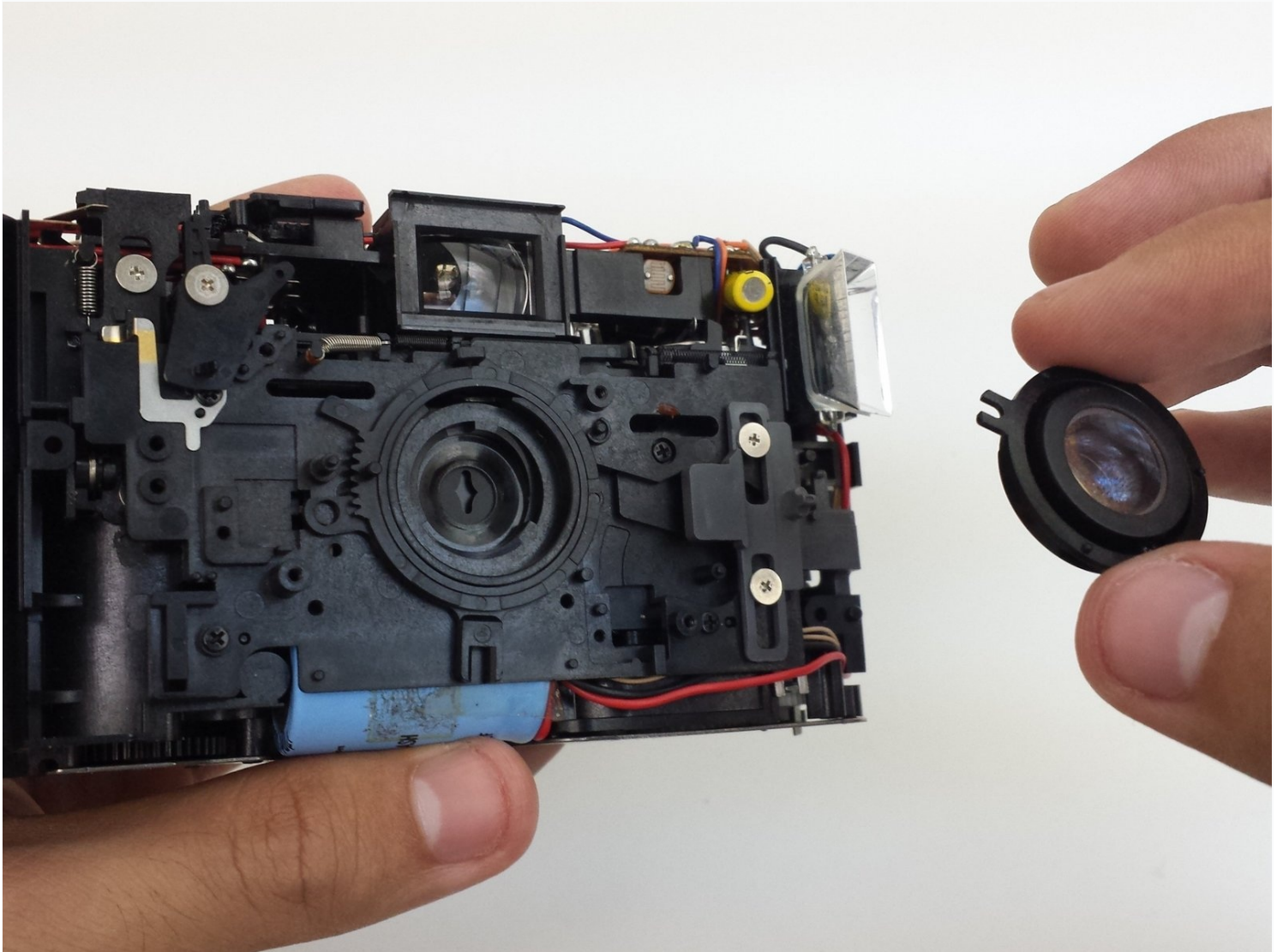




# Ricoh YF-20 Super Lens Replacement

This process involves removing the back cover...

Written By: Eric Dazet



## INTRODUCTION

This process involves removing the back cover and the front cover of the camera. After, the lens can be removed from the camera body.

---

### TOOLS:

Phillips #1 Screwdriver (1)

---

### Step 1 — Front Cover



- Use the screwdriver to unscrew the indicated screws from the left, right, bottom, and back sides of the camera.

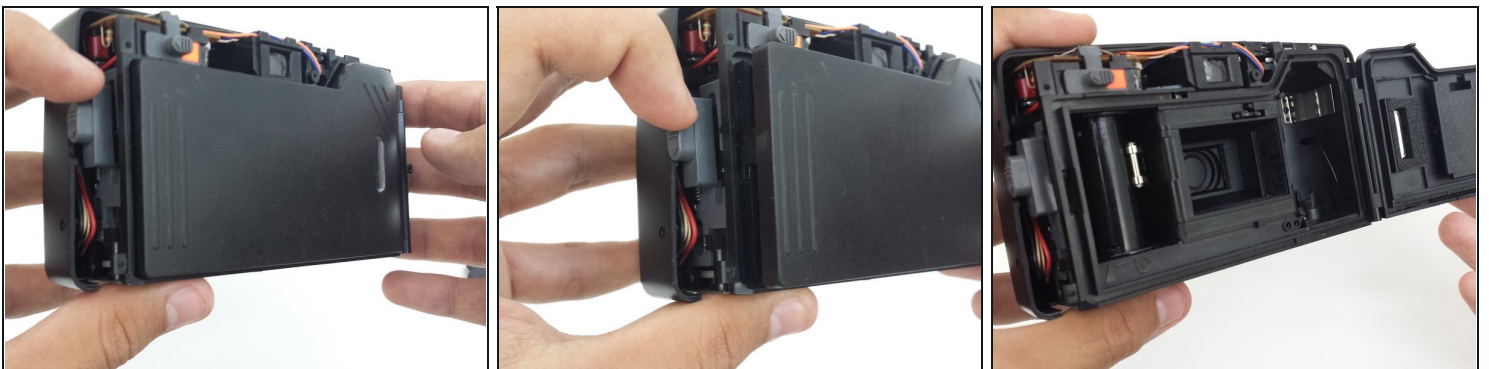
## Step 2



- Loosen the back cover from both the left and the right sides of the camera. Take off the back cover.

⚠ The lid of the battery compartment may fall off because it is not attached to anything.

## Step 3



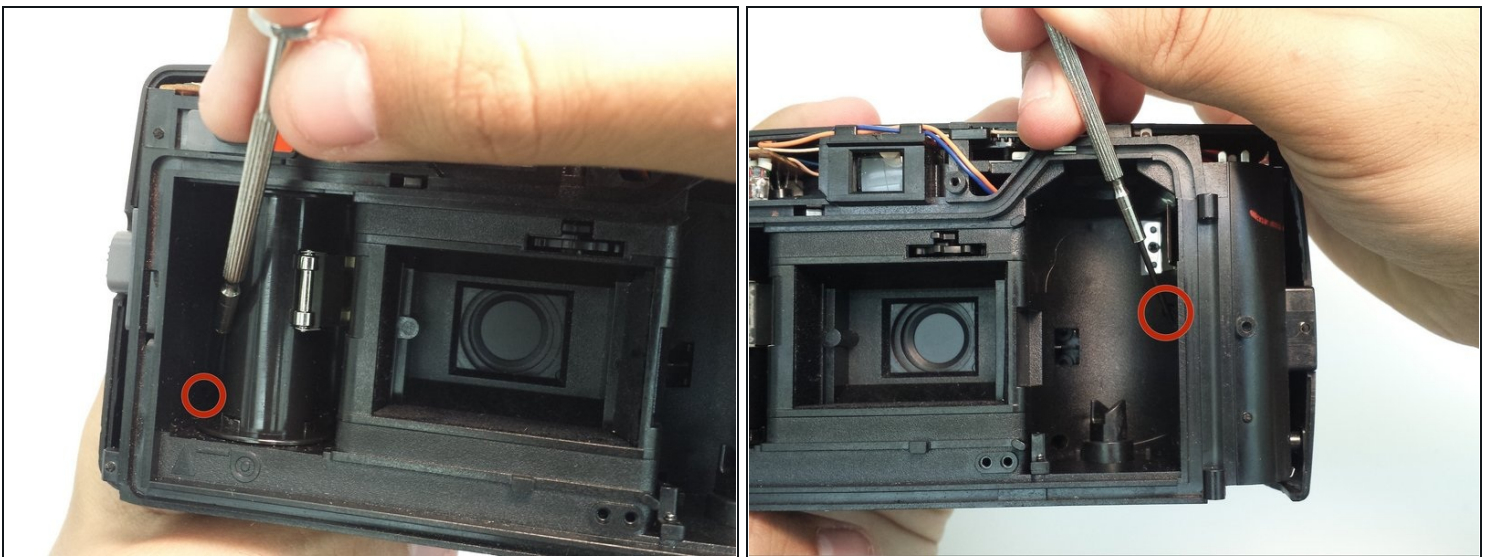
- Open the film compartment.
- Press your finger on top of the grey latch on the left side of the camera.

## Step 4



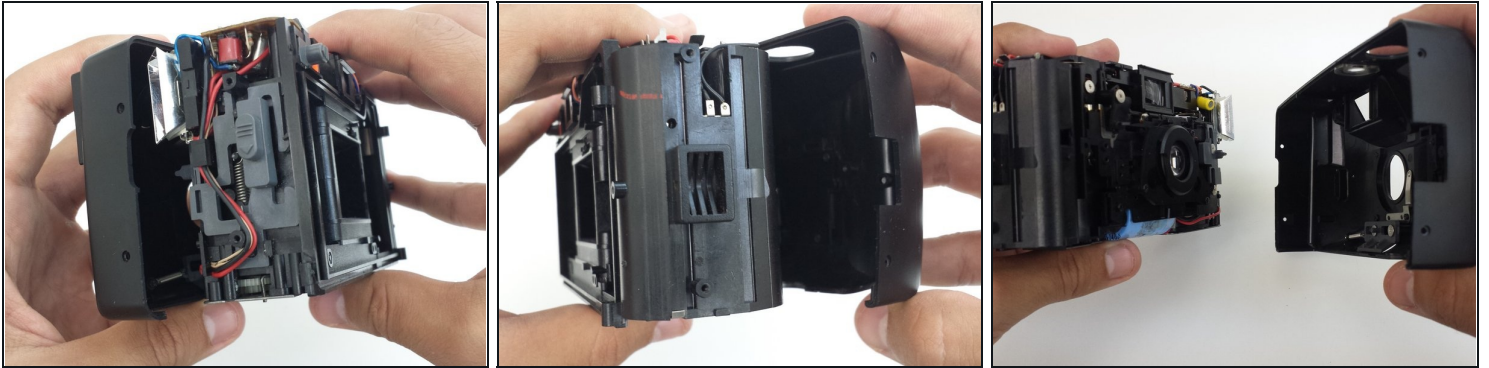
- ① Removing the film compartment door is optional. However, it may aid maneuverability in future steps.
- Use a thin object like a toothpick or a small screwdriver to push down on the metal pin holding the film compartment door in place.
  - Use your fingers to completely remove the metal pin.
  - Remove the film compartment door.

## Step 5



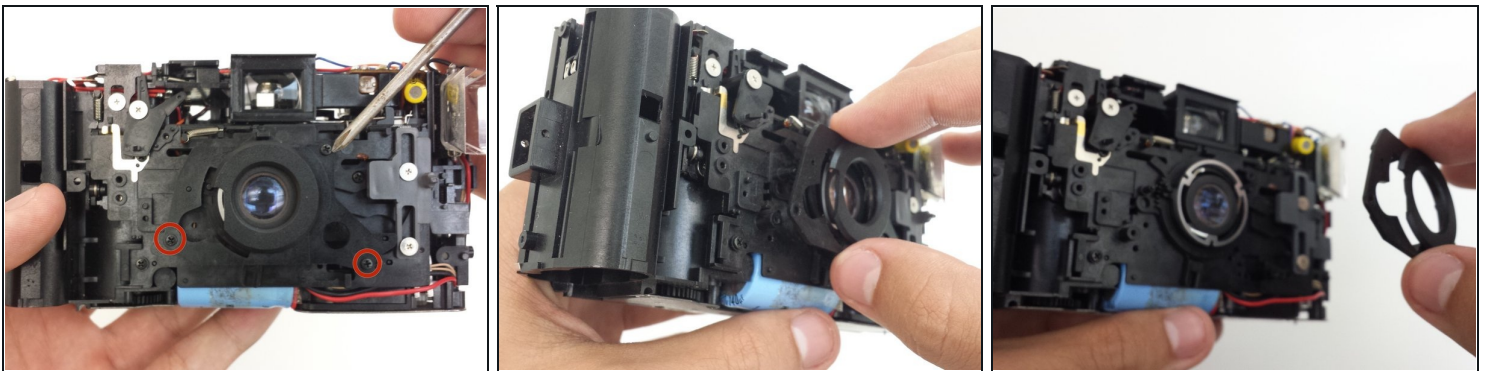
- Use a thin shaft screwdriver and unscrew the two indicated screws within the film compartment.

## Step 6



- Loosen the front cover from the left and right sides of the camera.
- Take off the front cover.

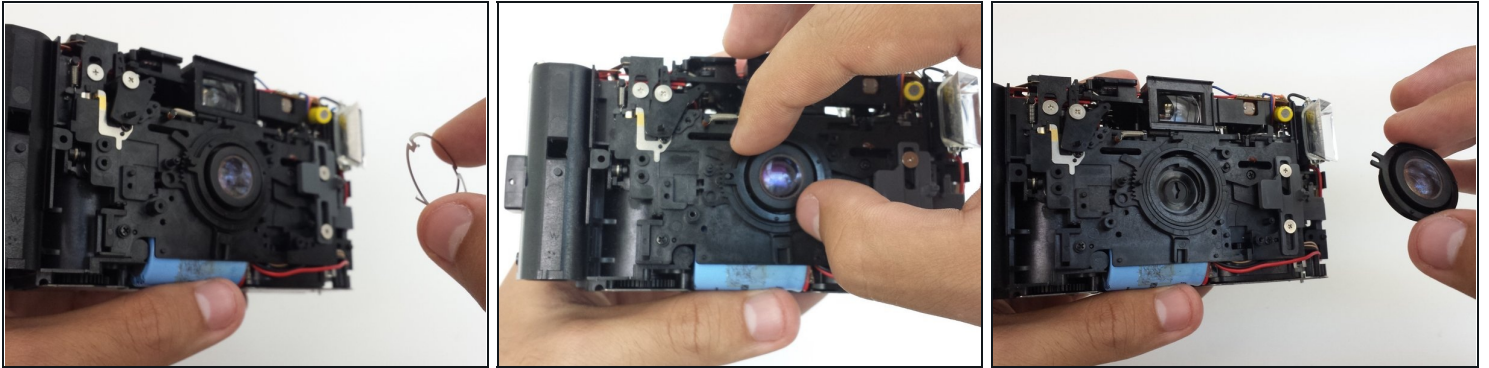
## Step 7 — Lens



**⚠ The lens is only attached to the main camera body. Set the front and back covers aside.**

- Unscrew three screws from the outermost plastic plate covering the lens.
- After the screws are removed, the outermost plate can be removed.

## Step 8



- Remove the ring shaped metal brace.
- Using fingers or [tweezers](#), remove the lens from the camera.

---

To reassemble your device, follow these instructions in reverse order.