



MacBook Unibody Model A1342 Hard Drive Cable Replacement

Written By: Walter Galan



INTRODUCTION

This guide will show you how to replace the hard drive cable.



TOOLS:

- [Phillips #00 Screwdriver](#) (1)
- [Spudger](#) (1)



PARTS:

- [MacBook Unibody \(Model No. A1342\)](#)
[Hard Drive Cable](#) (1)


Step 1 — Lower Case



- Remove the eight 4 mm Phillips screws securing the lower case to the MacBook.

Step 2



 The lower case is constructed of rubber-coated aluminum. Do not excessively bend the aluminum during removal, as any permanent deformation will cause tolerance issues after reassembly.

- Slightly lift the lower case near the vent opening.
- Continue running your fingers between the lower and upper cases until the upper case pops off its retaining clips.

 The location of these three clips is shown in the third picture.

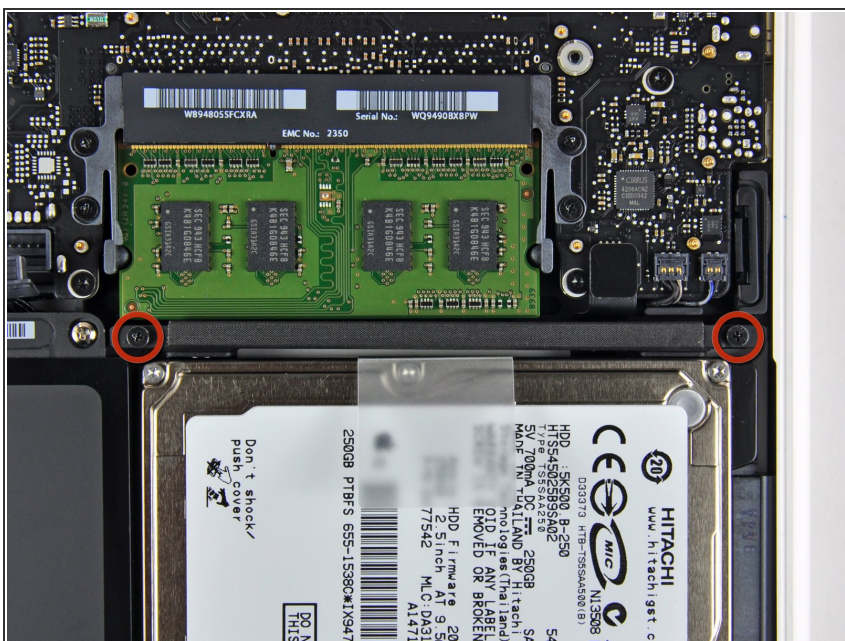
Step 3 — Battery



! For precautionary purposes, we advise that you disconnect the battery connector from the logic board to avoid any electrical discharge. This step is **optional** and is not required.

- Use the flat end of a spudger to lift the battery connector up out of its socket on the logic board.
- i** It may be easier to use your fingernails to lift up on both sides of the connector.

Step 4 — Hard Drive



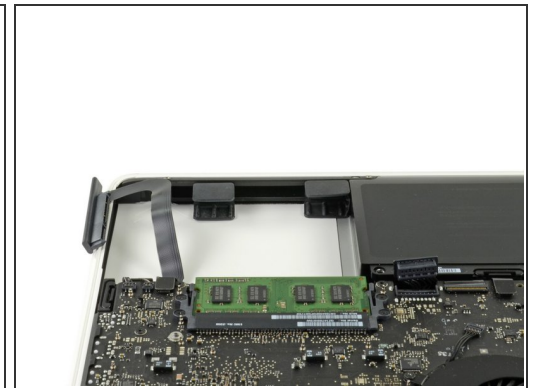
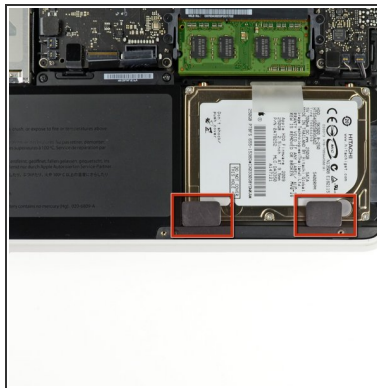
- Remove two 11 mm Phillips screws securing the hard drive bracket to the upper case.
- i** These screws are captive in the hard drive bracket.

Step 5



- Lift the retaining bracket out of the upper case.
- When putting the bracket back after replacing the drive, it is easy to put in backwards. If it doesn't seat smoothly, then reverse it and try again.

Step 6



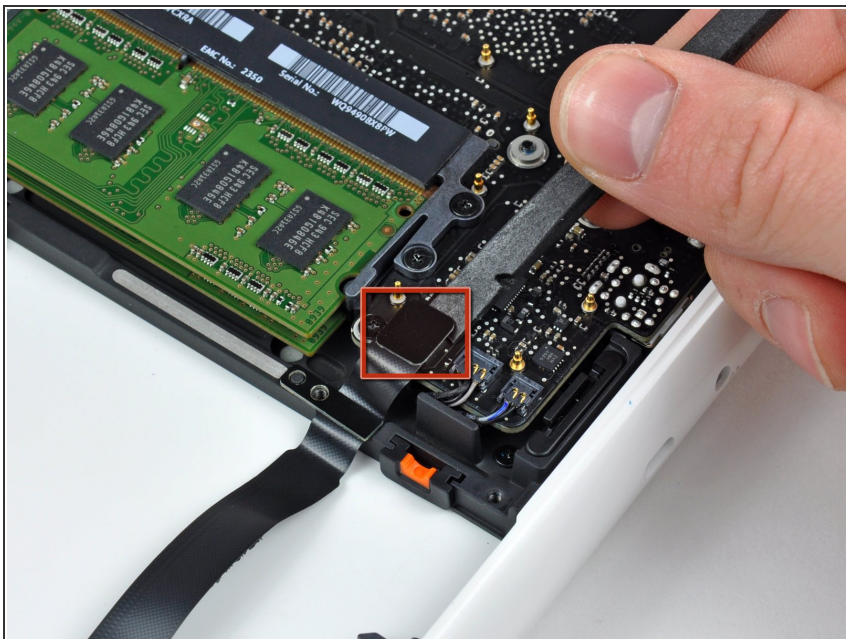
- Lift the hard drive by its pull tab and pull it away from the upper case, minding the cable still attaching it to the logic board.
- ⓘ In some revisions of the MacBook A1342, the hard drive bracket may include two rubber brackets (as highlighted in the second picture.) The correct orientation of the rubber brackets is shown in the third picture.

- ## Step 8 — Hard Drive Cable



- Page 6 of 7

Step 9



- Use the flat end of a spudger to pry the hard drive cable connector up off the logic board.
- Remove the hard drive cable from the upper case.

To reassemble your device, follow these instructions in reverse order.