



# MacBook Unibody Model A1342 Hard Drive Replacement

Replace the hard drive in your MacBook Unibody Model A1342.

Written By: Walter Galan



## INTRODUCTION

When replacing your hard drive, you must transfer the Torx screws from the old drive to the new one.



### TOOLS:

- [Phillips #00 Screwdriver](#) (1)
- [Spudger](#) (1)
- [T6 Torx Screwdriver](#) (1)



### PARTS:

- [MacBook and MacBook Pro \(Non-Retina\) SSD Upgrade Bundle](#) (1)
- [250 GB SSD](#) (1)
- [500 GB SSD](#) (1)
- [1 TB SSD](#) (1)
- [500 GB SSD Hybrid 2.5" Hard Drive](#) (1)
- [500 GB 5400 RPM 2.5" Hard Drive](#) (1)
- [1 TB 5400 RPM 2.5" Hard Drive](#) (1)
- [MacBook Unibody \(Model No. A1342\) Hard Drive Bracket](#) (1)
- [Universal Drive Adapter](#) (1)


## Step 1 — Lower Case



- Remove the eight 4 mm Phillips screws securing the lower case to the MacBook.

## Step 2



 The lower case is constructed of rubber-coated aluminum. Do not excessively bend the aluminum during removal, as any permanent deformation will cause tolerance issues after reassembly.

- Slightly lift the lower case near the vent opening.
- Continue running your fingers between the lower and upper cases until the upper case pops off its retaining clips.

 The location of these three clips is shown in the third picture.



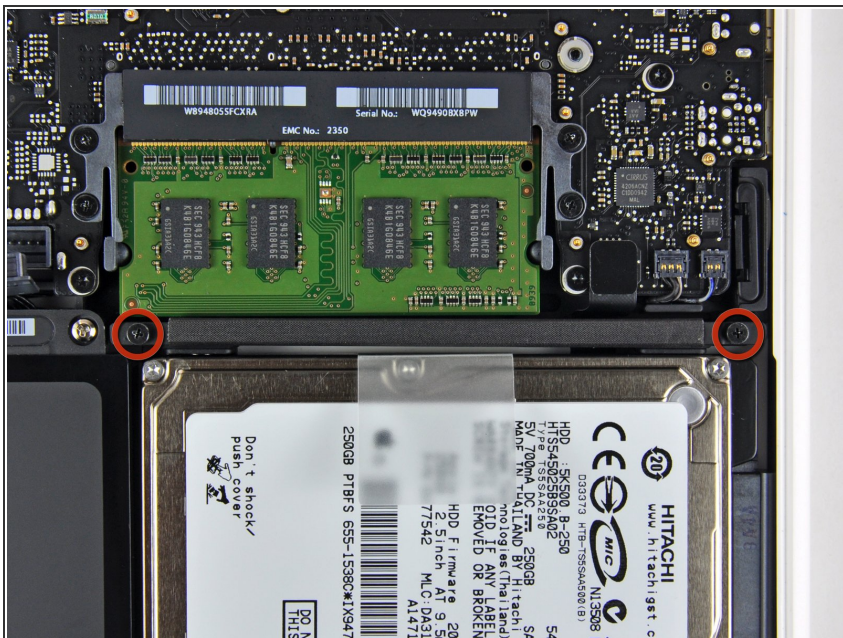
## Step 3 — Battery



**⚠** For precautionary purposes, we advise that you disconnect the battery connector from the logic board to avoid any electrical discharge. This step is **optional** and is not required.

- Use the flat end of a spudger to lift the battery connector up out of its socket on the logic board.
- i** It may be easier to use your fingernails to lift up on both sides of the connector.

## Step 4 — Hard Drive



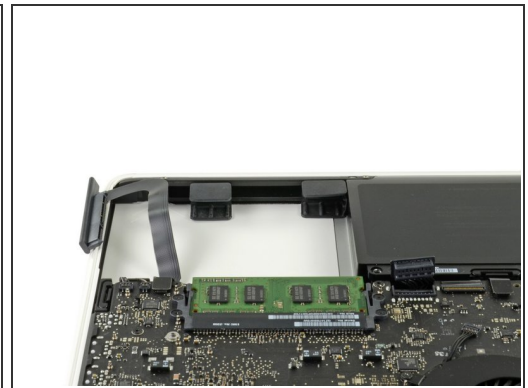
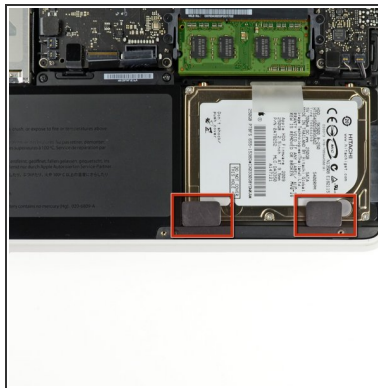
- Remove two 11 mm Phillips screws securing the hard drive bracket to the upper case.
- i** These screws are captive in the hard drive bracket.

## Step 5



- Lift the retaining bracket out of the upper case.
- When putting the bracket back after replacing the drive, it is easy to put in backwards. If it doesn't seat smoothly, then reverse it and try again.

## Step 6



- Lift the hard drive by its pull tab and pull it away from the upper case, minding the cable still attaching it to the logic board.
- ❗ In some revisions of the MacBook A1342, the hard drive bracket may include two rubber brackets (as highlighted in the second picture.) The correct orientation of the rubber brackets is shown in the third picture.



## Step 7



- Remove the hard drive cable by pulling its connector straight away from the hard drive.

## Step 8 — Hard Drive



- Remove the two T6 Torx screws from each side of the hard drive (four screws total).
- ✦ You'll need to transfer these screws to your new hard drive if you're changing drives.
- i If you are installing a new hard drive, we have an [OS X install guide](#) to get you up and running.

To reassemble your device, follow these instructions in reverse order.