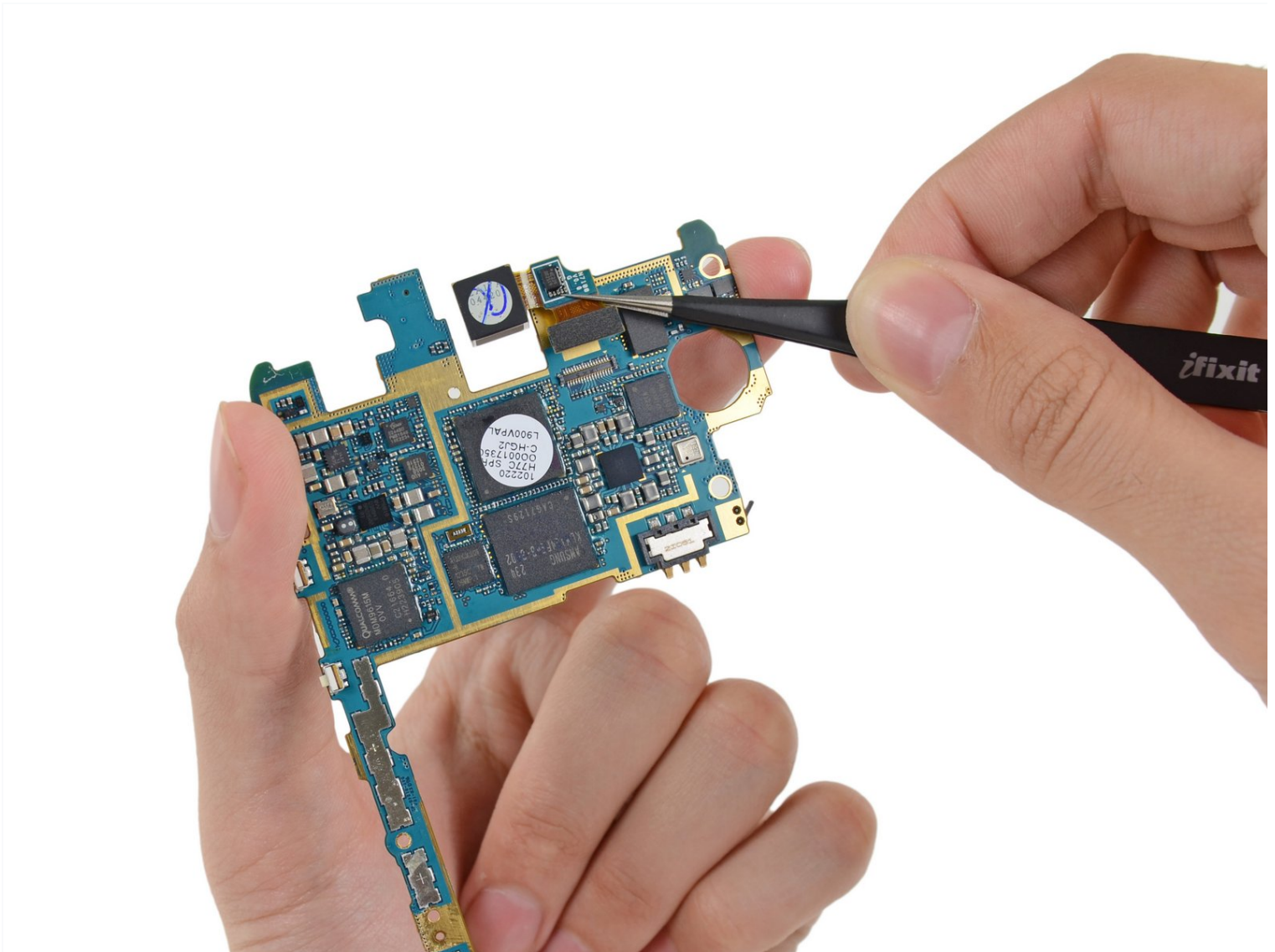




Samsung Galaxy Note II Rear Facing Camera Assembly Replacement

Use this guide to replace the rear-facing...

Written By: Sam Goldheart



INTRODUCTION

Use this guide to replace the rear-facing camera assembly in your Samsung Galaxy Note II.

TOOLS:

[iFixit Opening Tool](#) (1)
[Phillips #00 Screwdriver](#) (1)
[Spudger](#) (1)
[Tweezers](#) (1)

PARTS:

[Galaxy S III and Note II Rear Camera](#) (1)

Step 1 — Stylus



- Grasp the end of the stylus and remove it from its slot in the midframe.

Step 2 — Rear Case



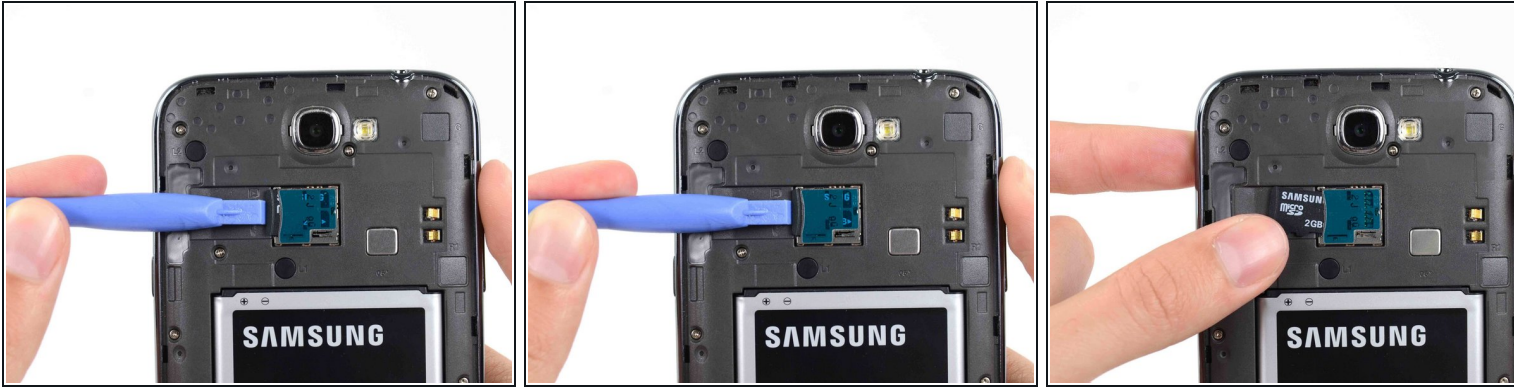
- Pry with a plastic opening tool, or your fingernail, in the divot to the left of the rear-facing camera, near the power button.

Step 3



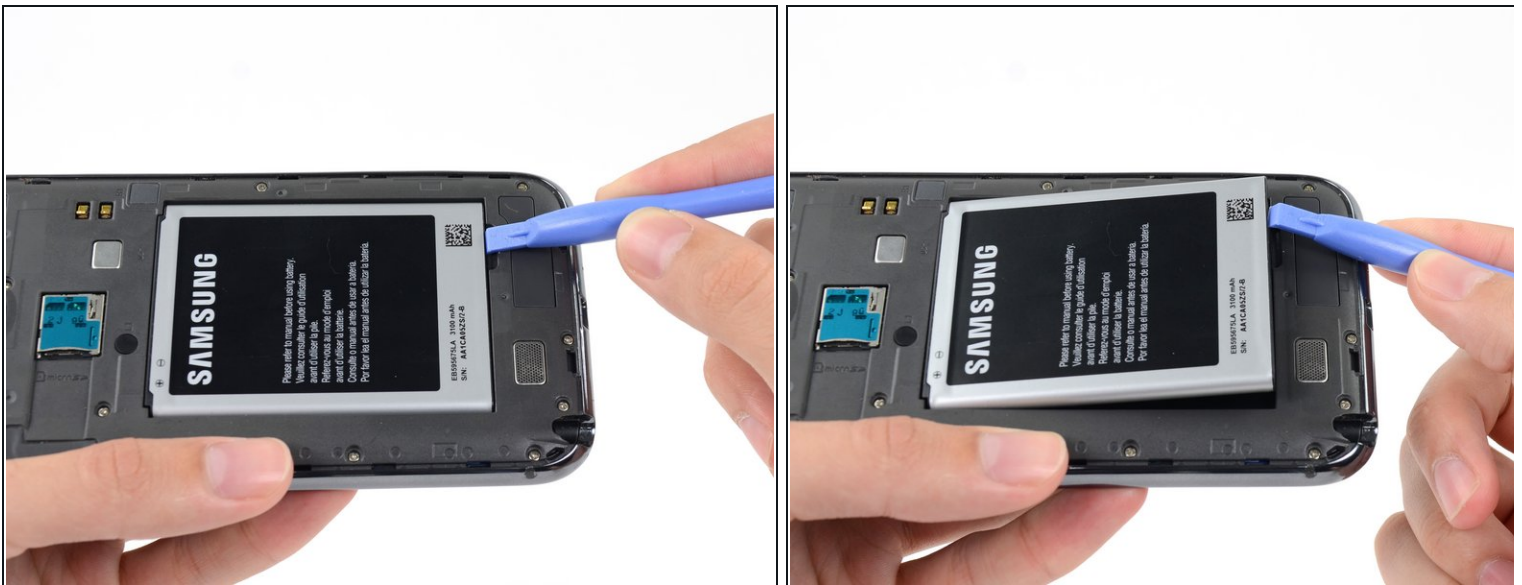
- Lift the rear case by the corner nearest the divot and remove it from the phone.

Step 4 — MicroSD Card



- If you have an SD card inserted, use the flat end of a spudger, or your fingernail, to press the microSD card slightly deeper into its slot until you hear a click.
 - After the click, release the card and it will pop out of its slot.
 - Remove the microSD card.
- ☒ For reassembly, push the microSD card into the slot until it clicks in place.

Step 5 — Battery



- Insert a plastic opening tool, or your finger, into the notch of the battery compartment and lift the battery upward.

Step 6



- Remove the battery from the midframe.

Step 7 — Midframe



- Remove the eleven 4.0 mm Phillips #00 screws securing the midframe to the display assembly.

Step 8



- Insert your plastic opening tool between the midframe and front panel assembly on the side of the phone.
- Slide the plastic opening tool down the seam.

Step 9



- Continue to run the plastic opening tool down the seam.

Step 10



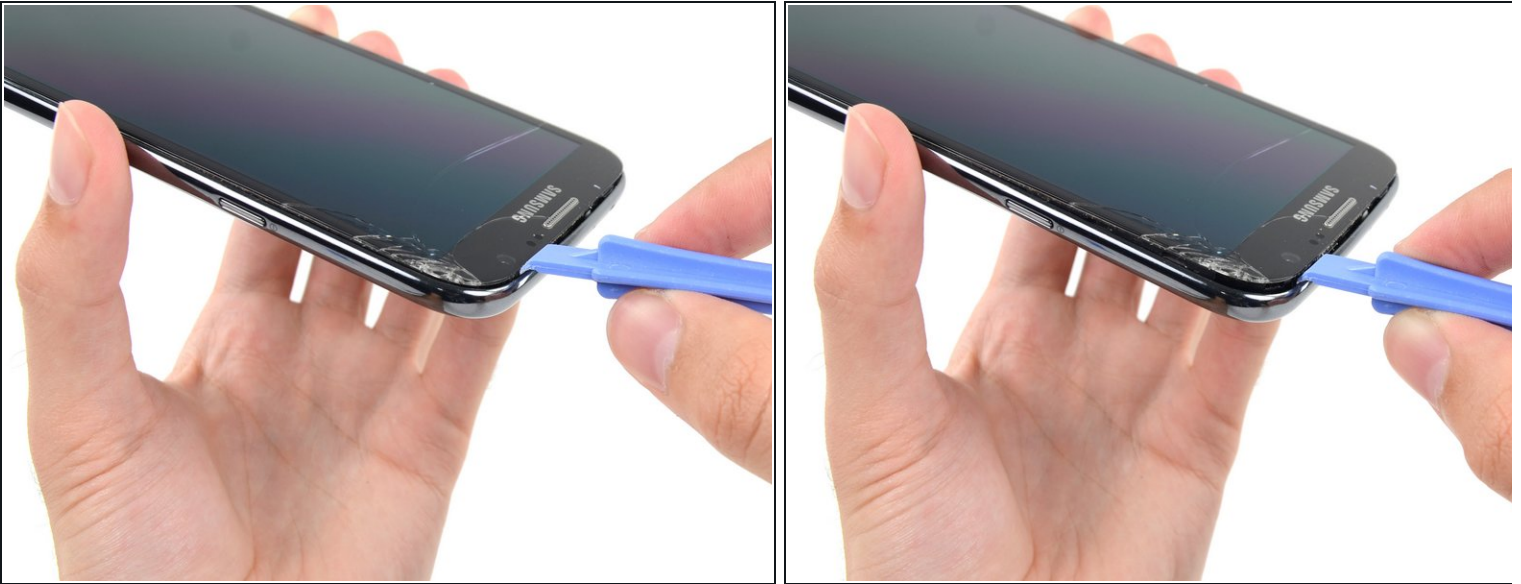
- Carefully pry around the corner with a plastic opening tool.

Step 11



- Pry along the top of the phone with a plastic opening tool.

Step 12



- Push the plastic opening tool down to free the corner of the midframe from the display assembly.

Step 13



- Free the clips along the power button side of the phone.
- Lastly, free the two clips along the top and bottom edge of battery compartment.

Step 14



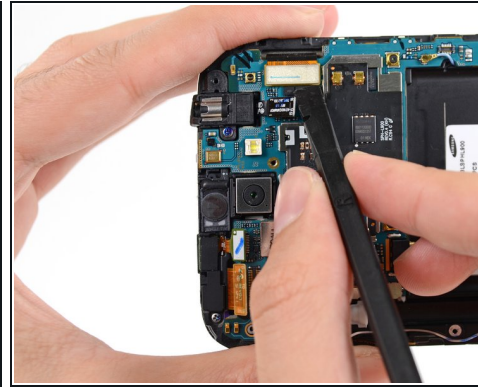
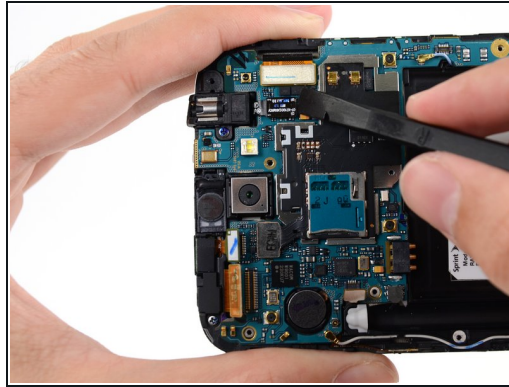
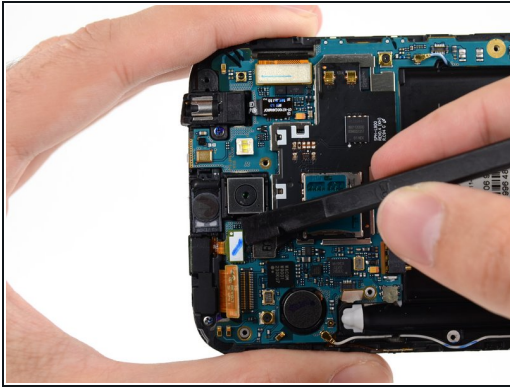
- Lift the display assembly out of the midframe.

Step 15 — Motherboard Assembly



- Use a spudger to disconnect the vibrator/power button assembly cable connector.
- Disconnect the antenna cable connector.
- Disconnect the display cable connector.

Step 16



- Disconnect the front-facing camera cable connector.
- Disconnect the headphone jack cable connector.
- Disconnect the digitizer cable connector.

Step 17



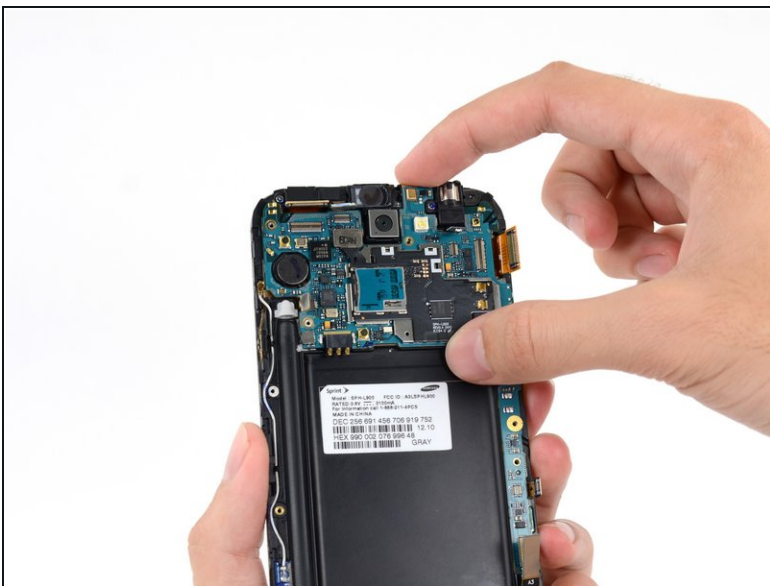
- Use the spudger to disconnect the antenna cable connector from the motherboard.
- Disconnect the soft button cable connector.
- Disconnect the USB board cable connector.

Step 18



- Remove the 3 mm Phillips #00 screw securing the motherboard to the display assembly.

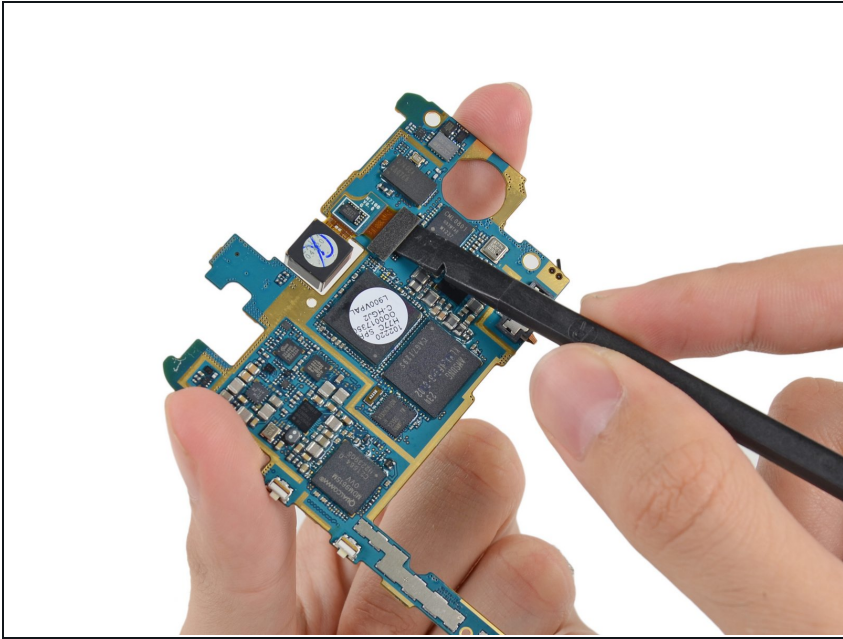
Step 19



- Gently remove the motherboard.

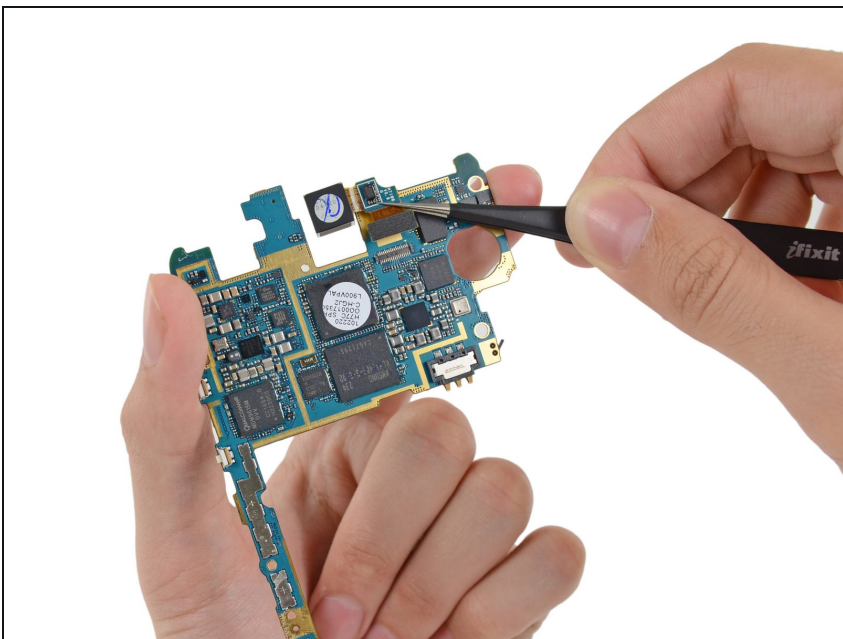
⚠ Hold the motherboard by its edges to prevent ESD damage. Be careful not to snag it on any cables as you extract it from the display assembly.

Step 20 — Rear Facing Camera Assembly



- Use a spudger to disconnect the rear-facing camera assembly cable connector.

Step 21



- Use tweezers, or your fingers, to remove the rear-facing camera assembly.

To reassemble your device, follow these instructions in reverse order.