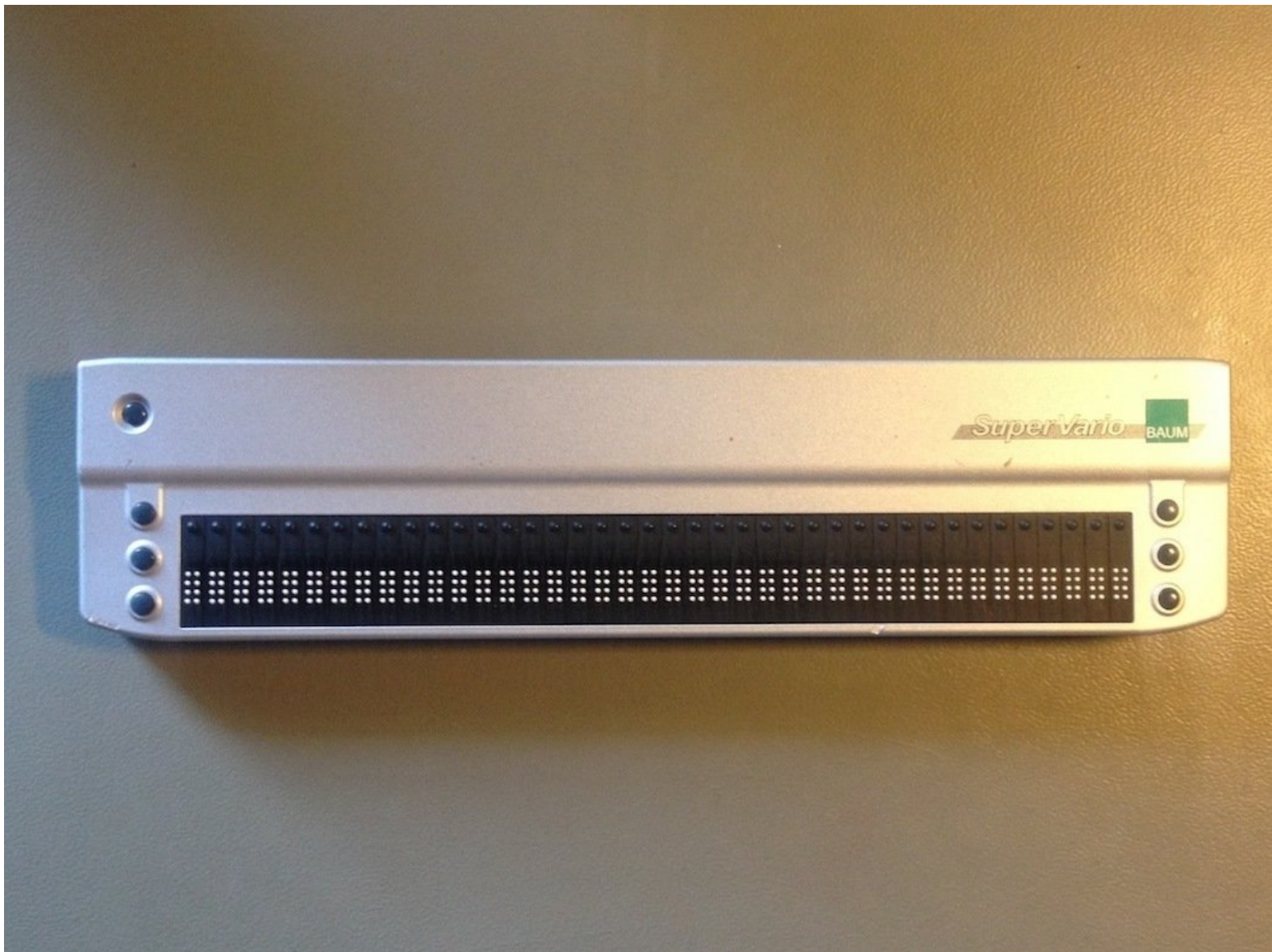




Removal of super-vario 40 braille display

You will complete the complete disassembly of super vario 40 Baum

Written By: Sisyphé



INTRODUCTION

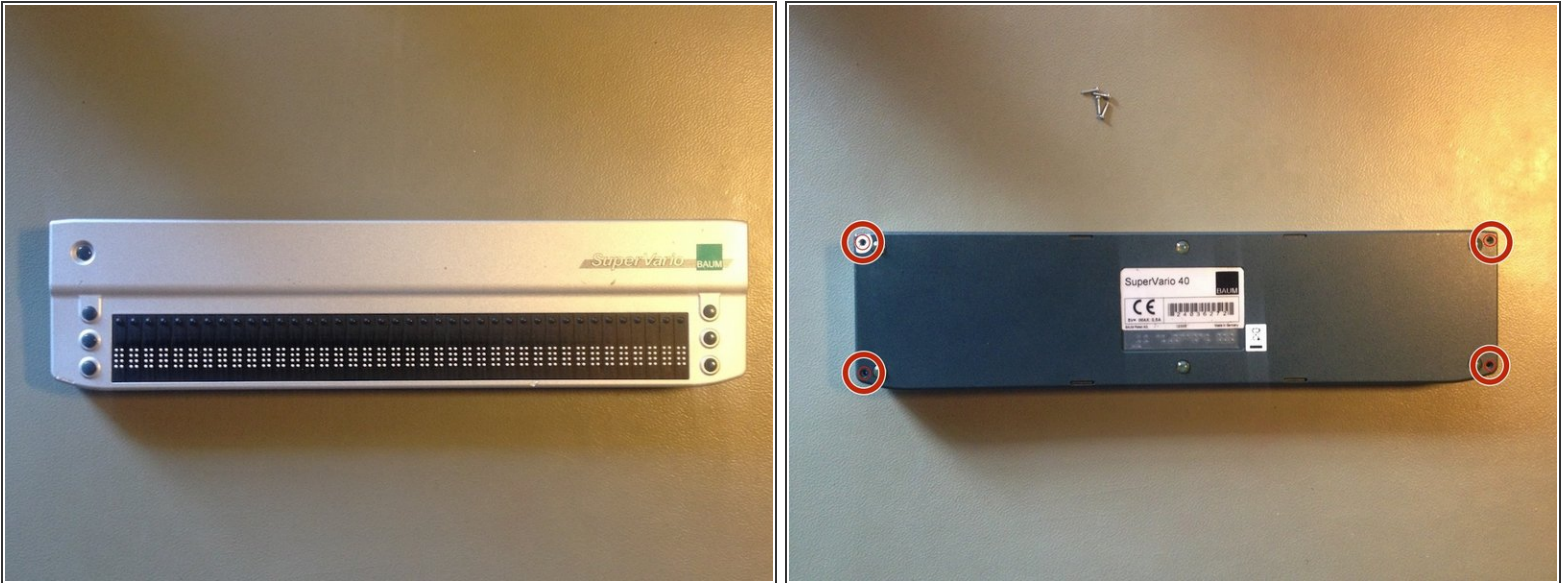
Use this guide to assist with general disassembly or troubleshooting of your braille display.



TOOLS:

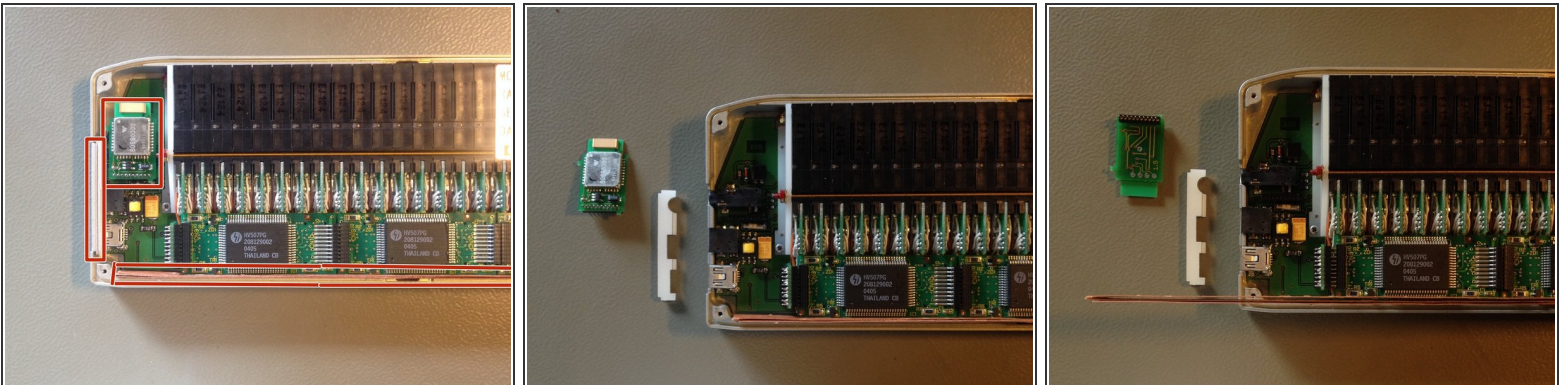
- [Phillips #00 Screwdriver](#) (1)
 - [Tweezers](#) (1)
-

Step 1 — Removal of super-vario 40 braille display



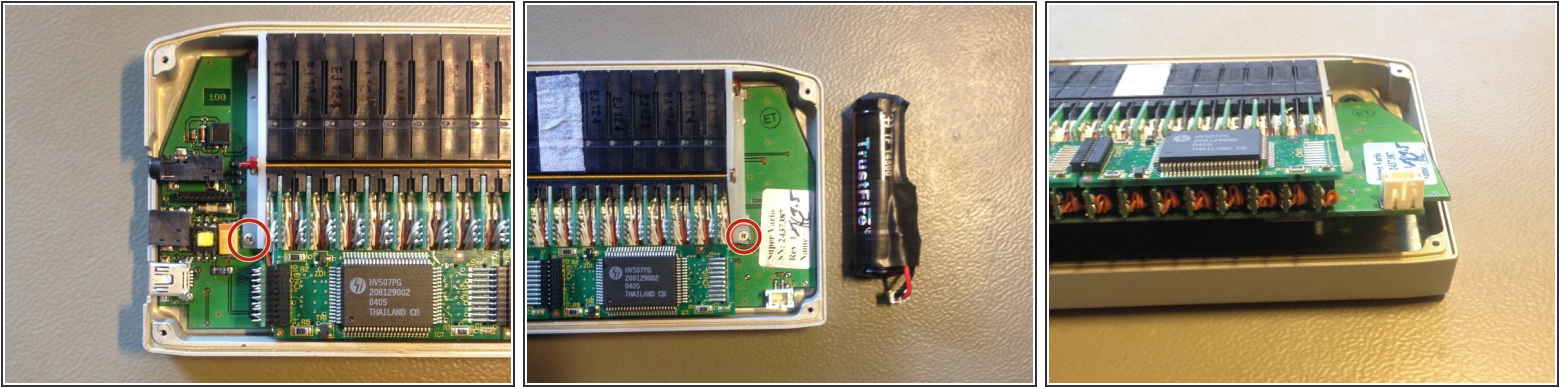
- Remove the four bottom screws with a Phillips #00 screwdriver.

Step 2



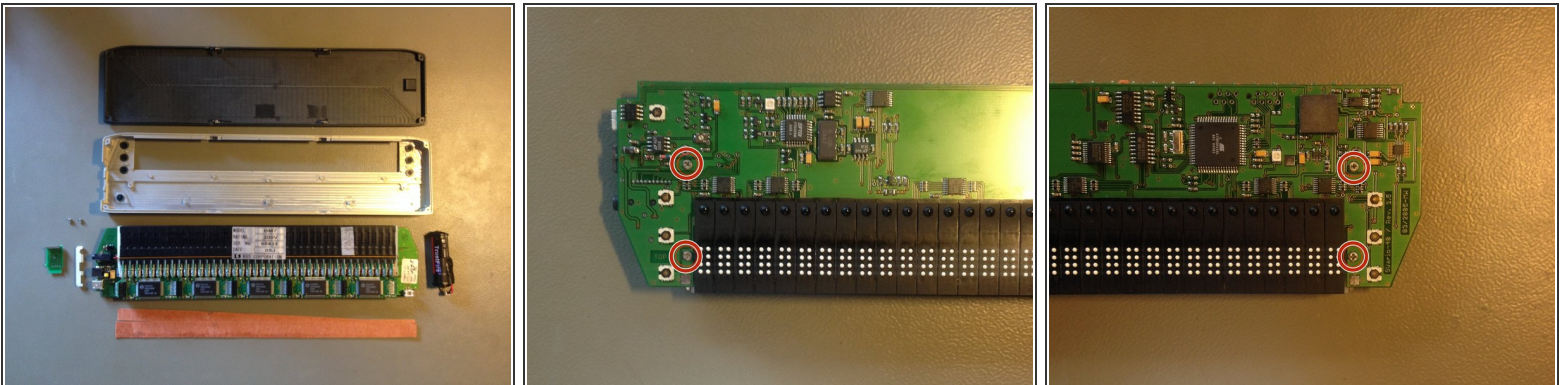
- Remove the plastic cover, paper and chipset.

Step 3



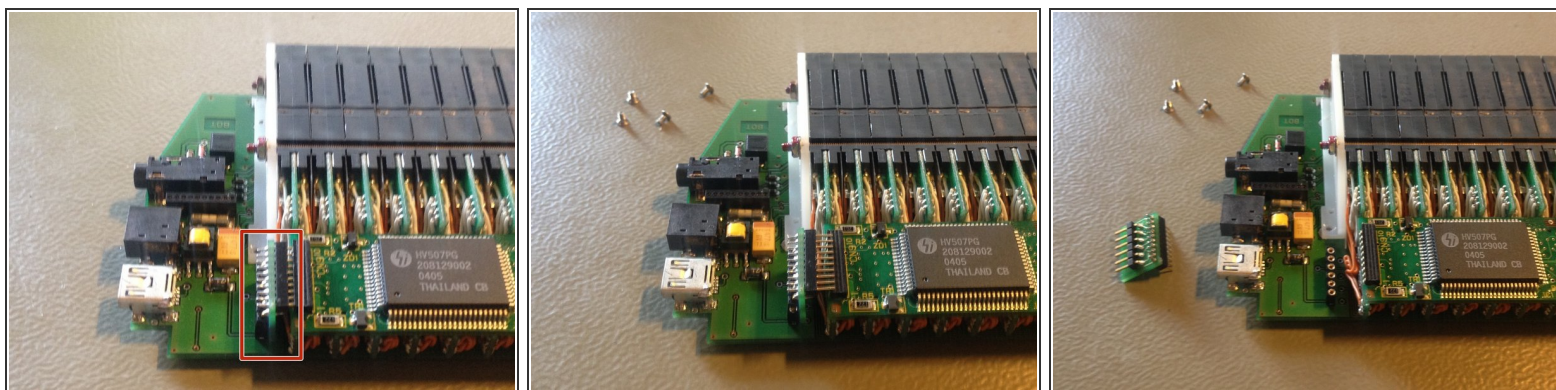
- Remove the two screws with a Phillips #00 screwdriver on the logic board.
- take out the main circuit like show in the picture

Step 4



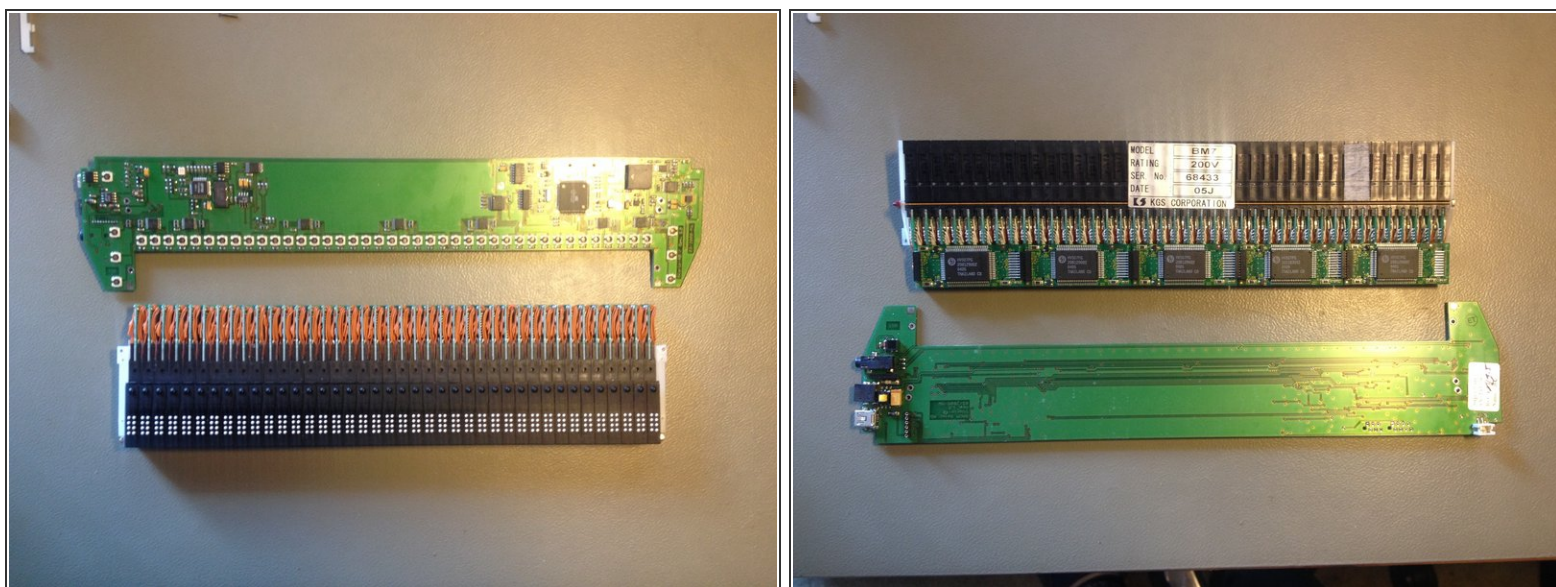
- Remove the four screws with a Phillips #00 screwdriver.

Step 5



- Remove the connector delicately.

Step 6



- when you put it back together make sure mechanical cells are connected correctly

To reassemble your device, follow these instructions in reverse order.