



iMac G3 Model M4984 Hard Drive Replacement

Written By: Chris Green



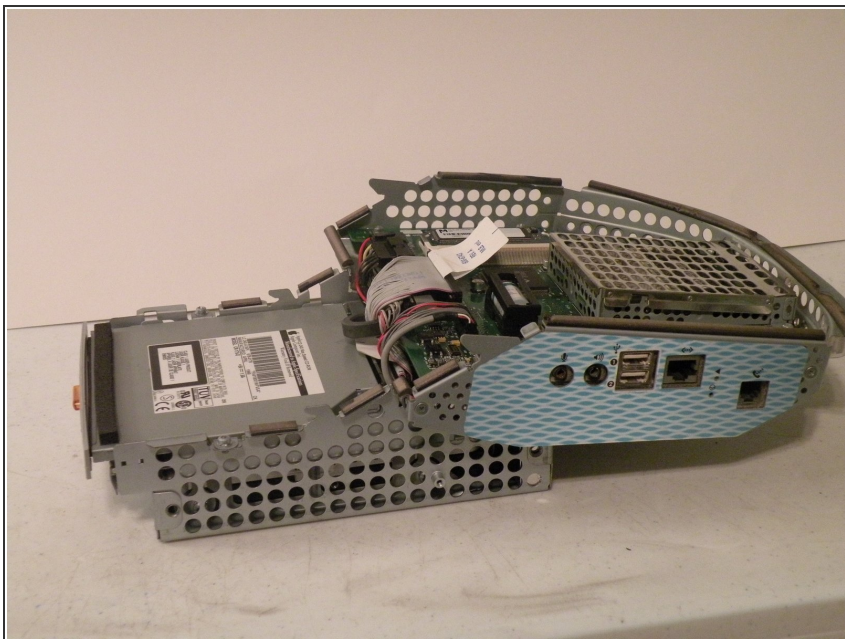
INTRODUCTION

The iMac G3 Uses a 3.5" IDE Hard Drive. It supports data partitions no larger then 128GB and boot partitions no larger then 8GB (The 8GB limit only applies to iMac G3 tray loaders).

TOOLS:

- [6-in-1 Screwdriver](#) (1)
 - [Phillips #0 Screwdriver](#) (1)
 - [Flathead 3/32" or 2.5 mm Screwdriver](#) (1)
-

Step 1 — Logic Board



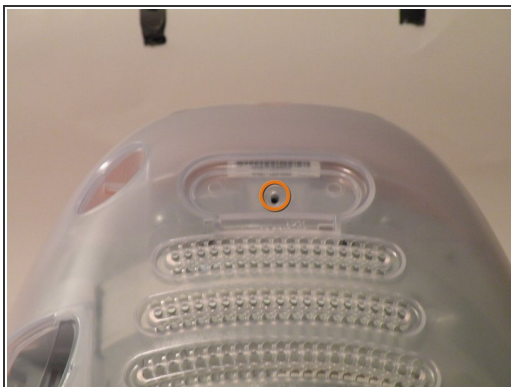
- The iMac G3. This was a great computer for the time, and had plenty of features.

Step 2



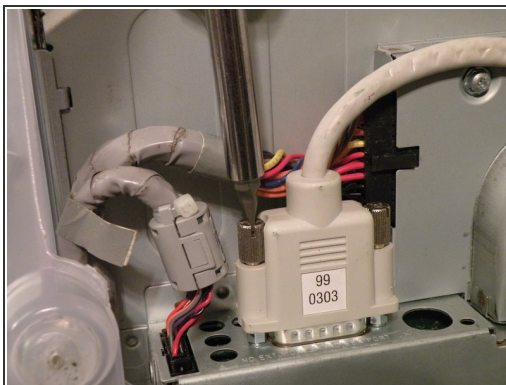
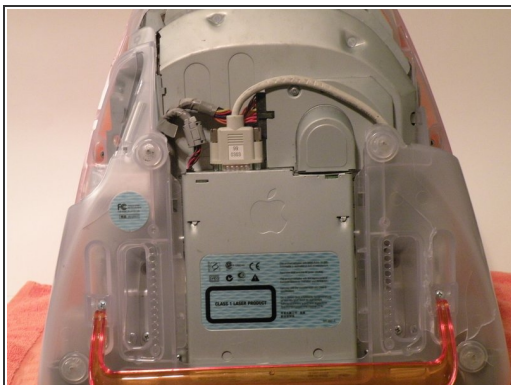
- Start by flipping the iMac upside-down. It may help to lay it on a towel, so you don't damage the screen, or scratch the face.

Step 3



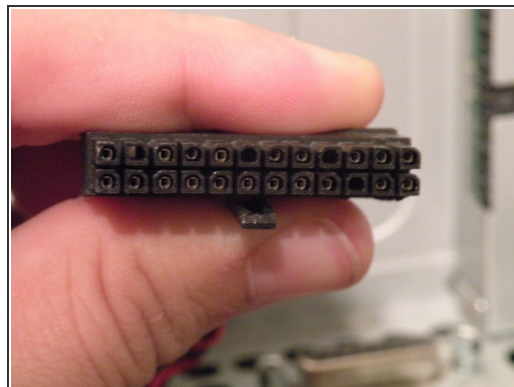
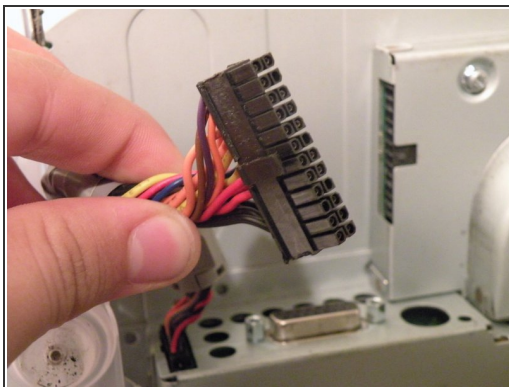
- Remove this Phillips screw.
- Using a flathead screwdriver, work your way around the bottom cover, until it comes off.
- Then, lift the bottom cover up and out, and set it aside.

Step 4



- Now, remove the DB-15 Video connector from the logic board.
- It may be helpful to use a Phillips screwdriver to remove the thumbscrews.

Step 5



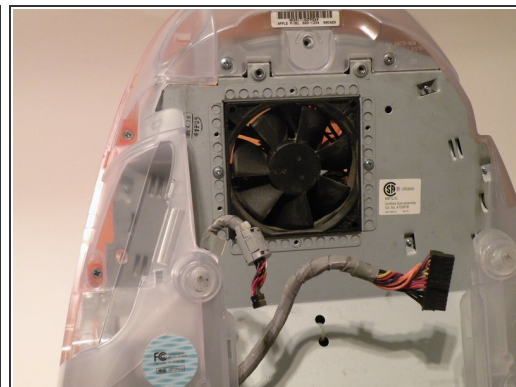
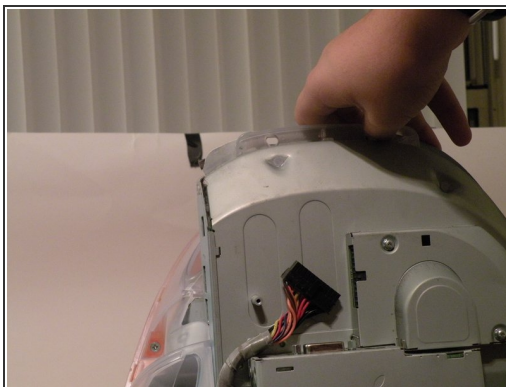
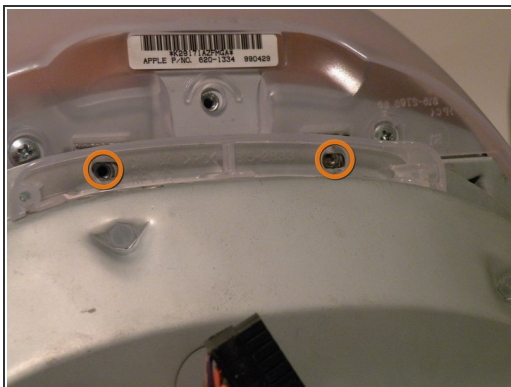
- Remove the power cable from the logic board assembly.

Step 6



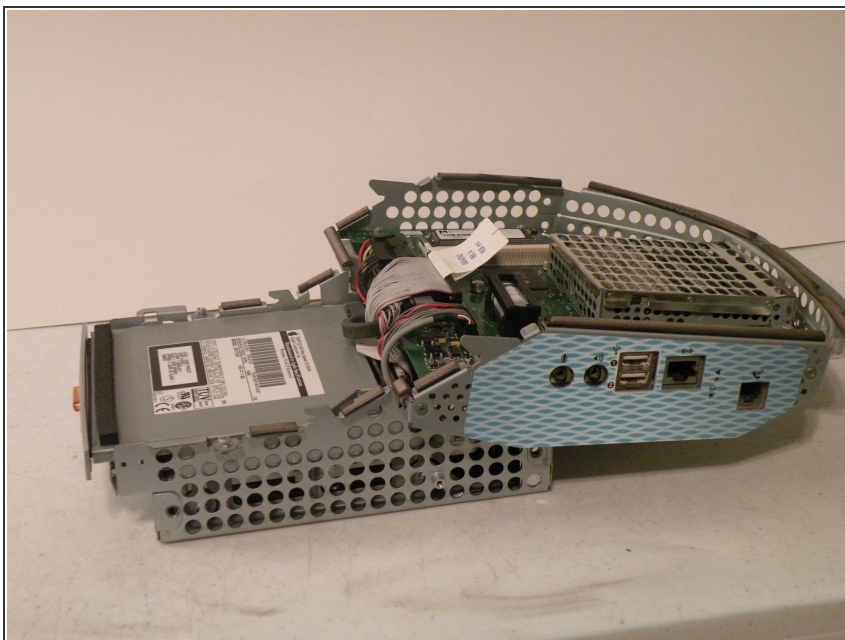
- Remove the front panel connector. (You may also need to remove an additional screw that connects the front panel connector to the logic board assembly).

Step 7



- Now, remove these Phillips screws.
- Now, grab the logic board assembly by the piece of plastic, and lift it out.

Step 8



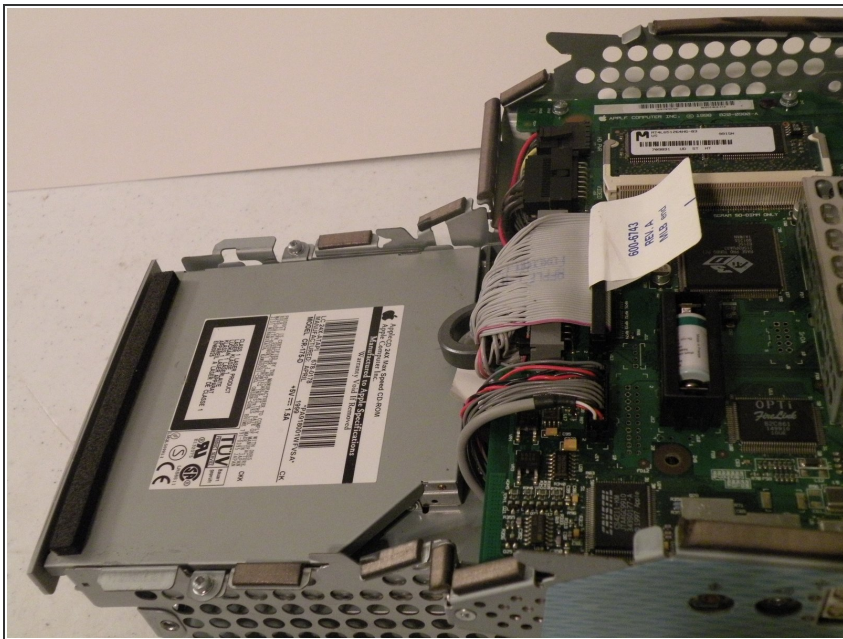
- The logic board assembly. This is the heart of the computer, it contains the motherboard, CPU, RAM, V-RAM, PRAM battery, the hard drive, and the optical drive.

Step 9 — Optical Drive



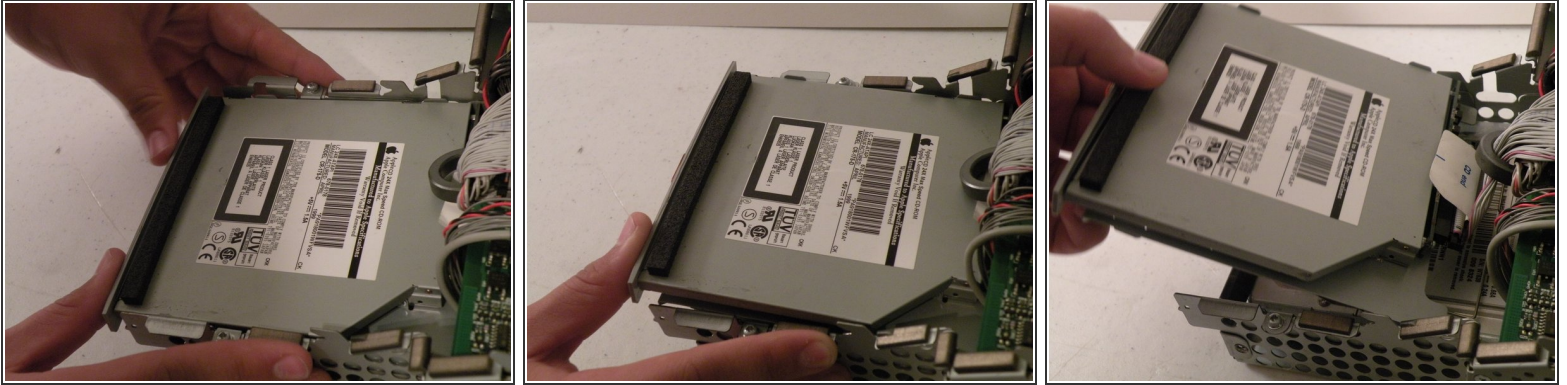
- Now to remove the optical drive!

Step 10



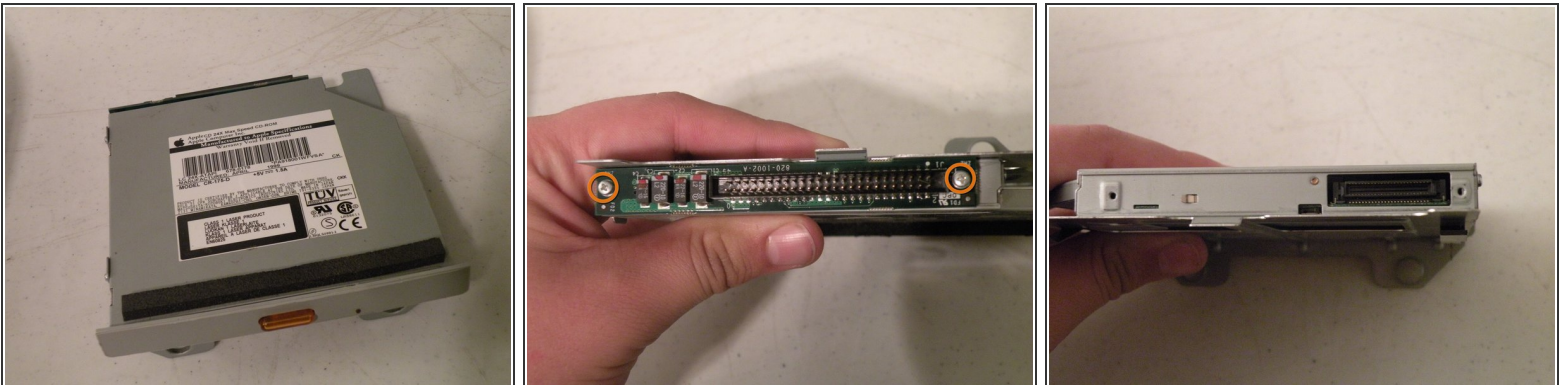
- The optical drive is located near the front of the assembly.

Step 11



- To remove the drive, push it in, lift up, and then pull forward.
- As you pull the drive forward, disconnect the ribbon cable and set it aside.

Step 12



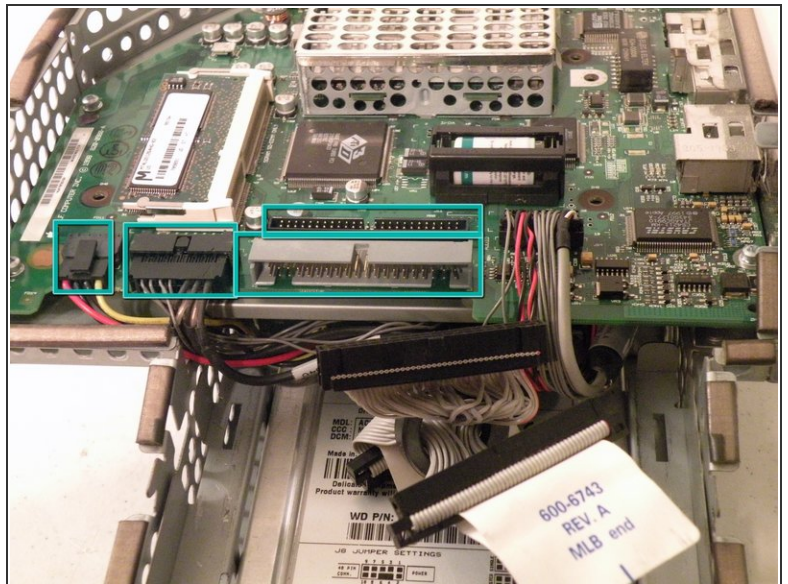
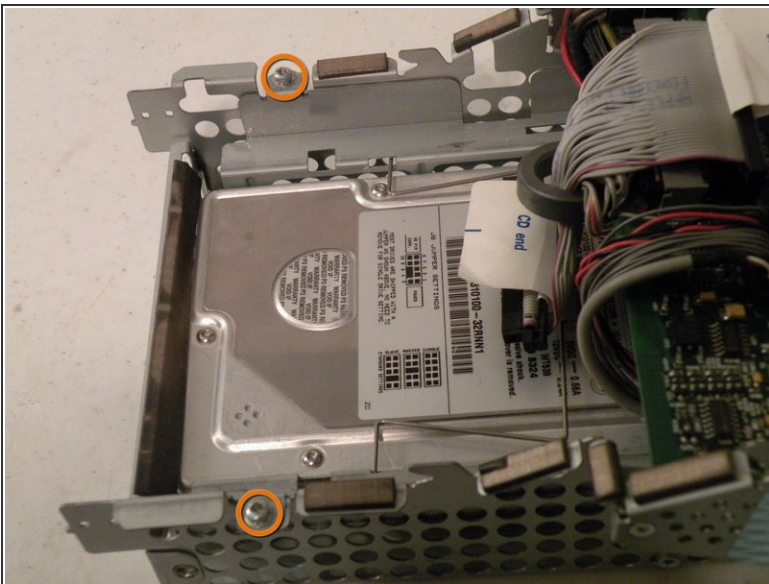
- Remove the two phillips #00 screws.
- Then remove the board. This will reveal that it is a standard PATA drive.
- Congrats, the drive is free! You can use any PATA-tray loading drive in the iMac G3 which means you can install a CDRW to burn CDs in OS9 or X(if using OSX,install that DVD writer) but, of course only original drives will match the great look of the iMac).

Step 13 — Hard Drive



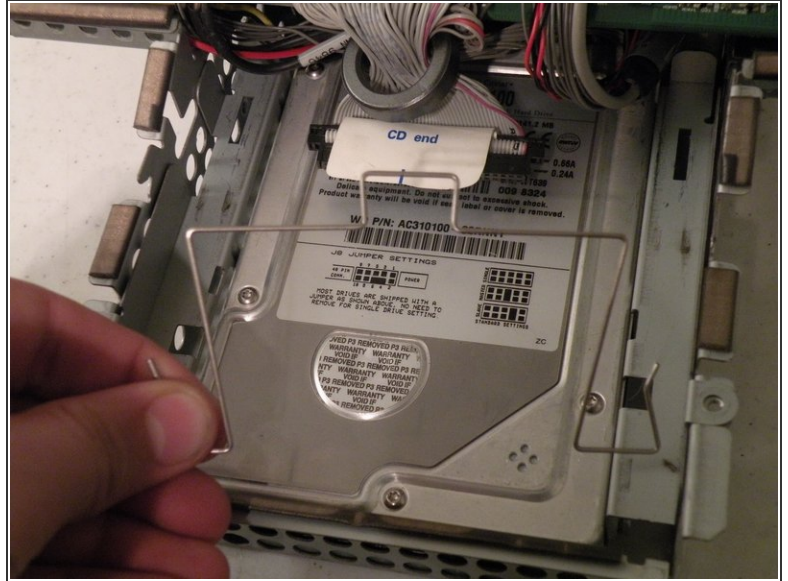
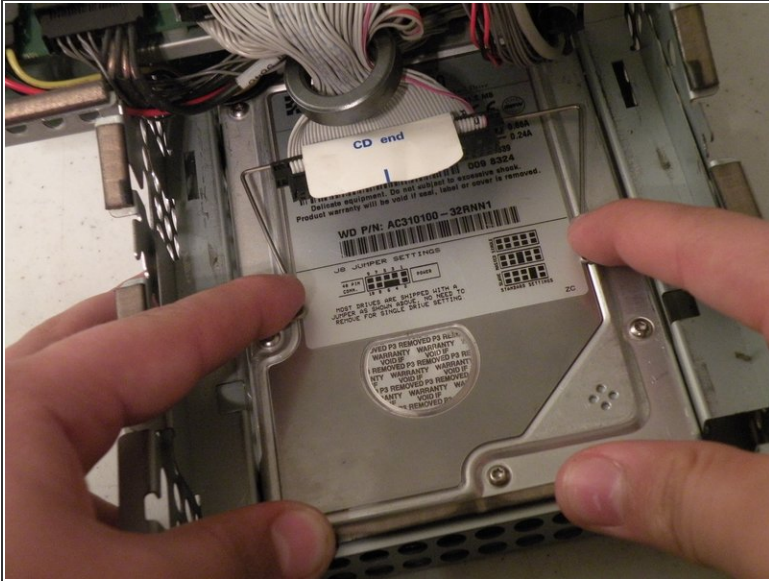
- Hard Drive Removal:

Step 14



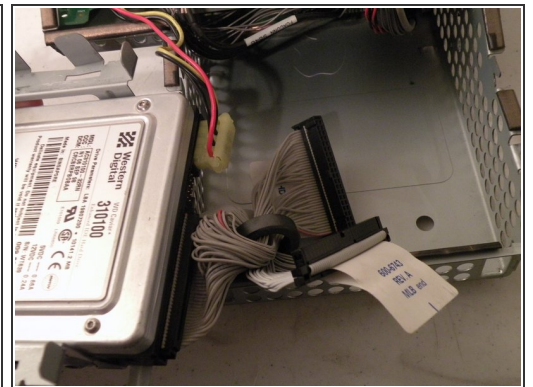
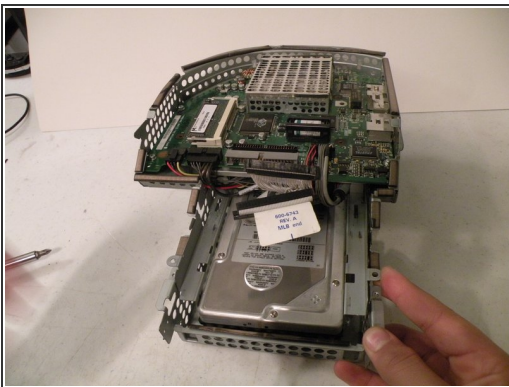
- Start by removing these Phillips screws:
- Now, remove all of these cables:

Step 15



- Now, remove the optical drive retention spring.
 - Push in on both sides, and pull towards you releasing the retention spring.
- i** It may help to do it one side at a time.

Step 16



- Now lift the drive up, and pull it out.
- ⚠** Make sure that no cables are snagged before completed pulling out the drive!

Step 17



- i** When installing a new drive, make sure that the drive jumper block is set to "Single drive". In most drives, this means removing the jumper, or positioning the jumper horizontally instead of vertically, so you don't lose it.
- To remove the drive from the metal caddy, remove these four screws from the side of the drive.

To reassemble your device, follow these instructions in reverse order.