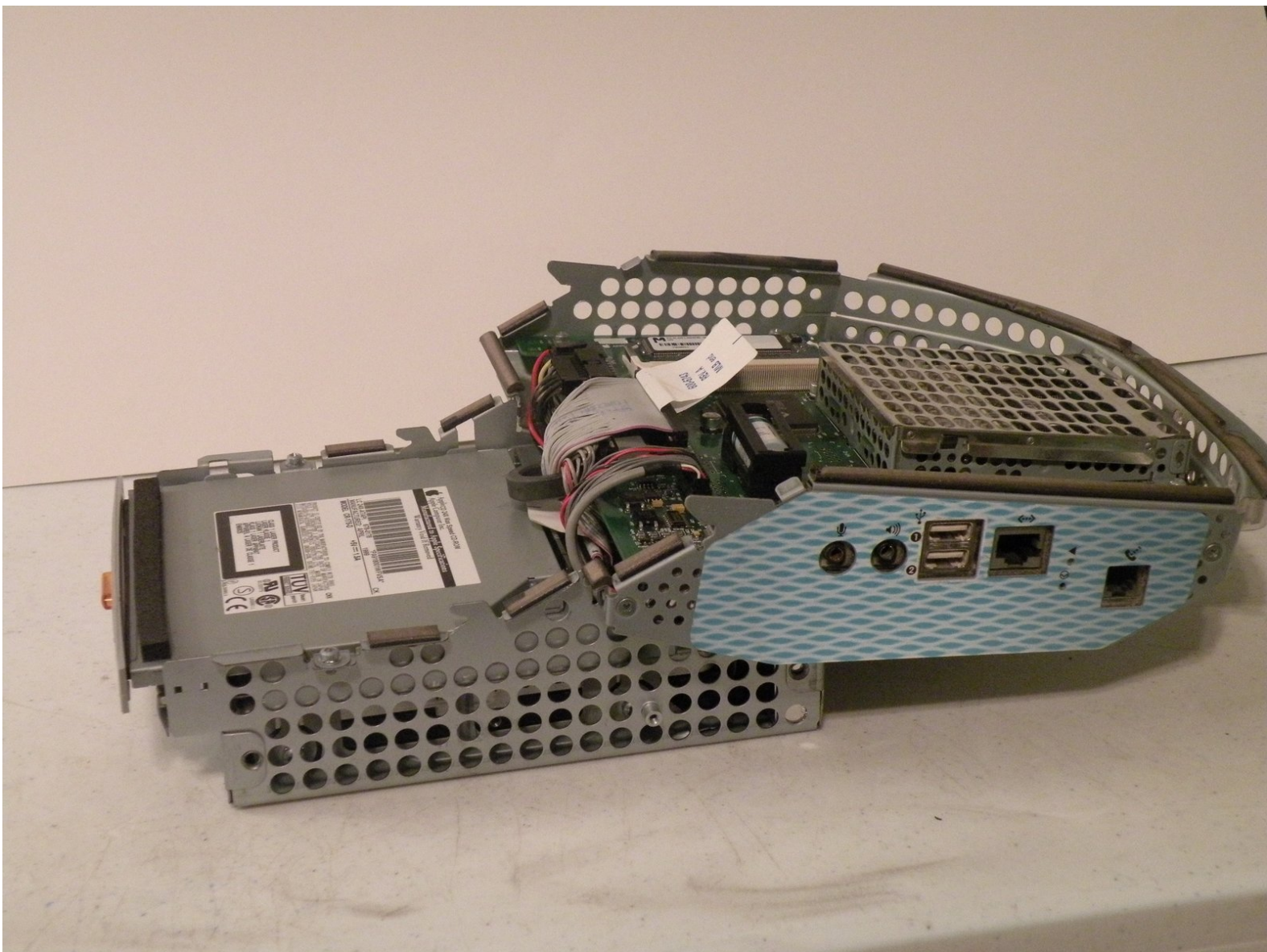




iMac G3 Model M4984 Logic Board Replacement

Written By: Chris Green



INTRODUCTION

The iMac G3 (Tray-Loading)

The iMac G3 was Apple's new G3 all-in-one. It had tons of new features, and removed all old interfaces. It was released in 1998, and sported a 266Mhz, or 333Mhz PowerPC G3. It also came in five colors: tangerine, blueberry, lime, grape, and strawberry. These were known as the "5 Flavors."



TOOLS:

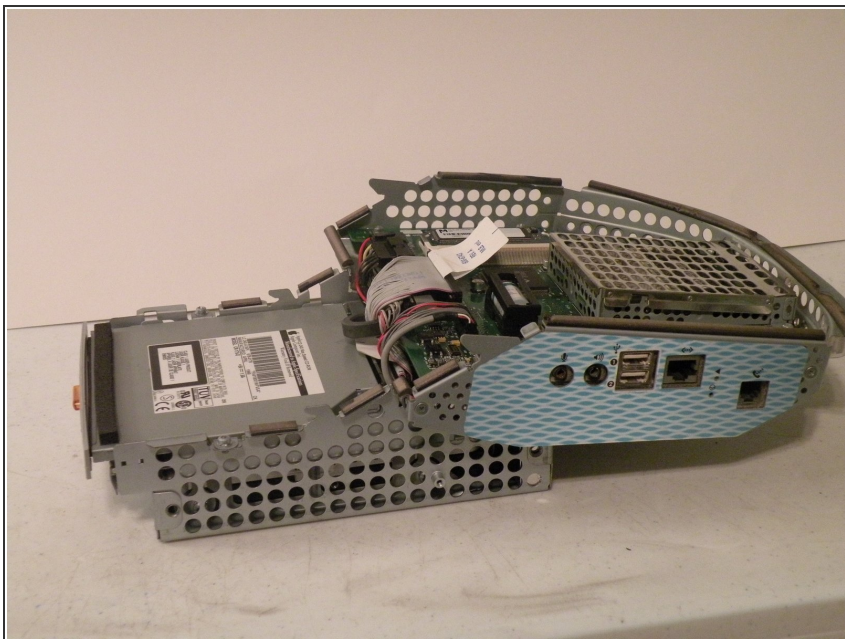
- [Phillips #0 Screwdriver](#) (1)
- [Phillips #00 Screwdriver](#) (1)



PARTS:

- [PC133 128 MB RAM Chip](#) (1)

Step 1 — Logic Board



- The iMac G3. This was a great computer for the time, and had plenty of features.

Step 2



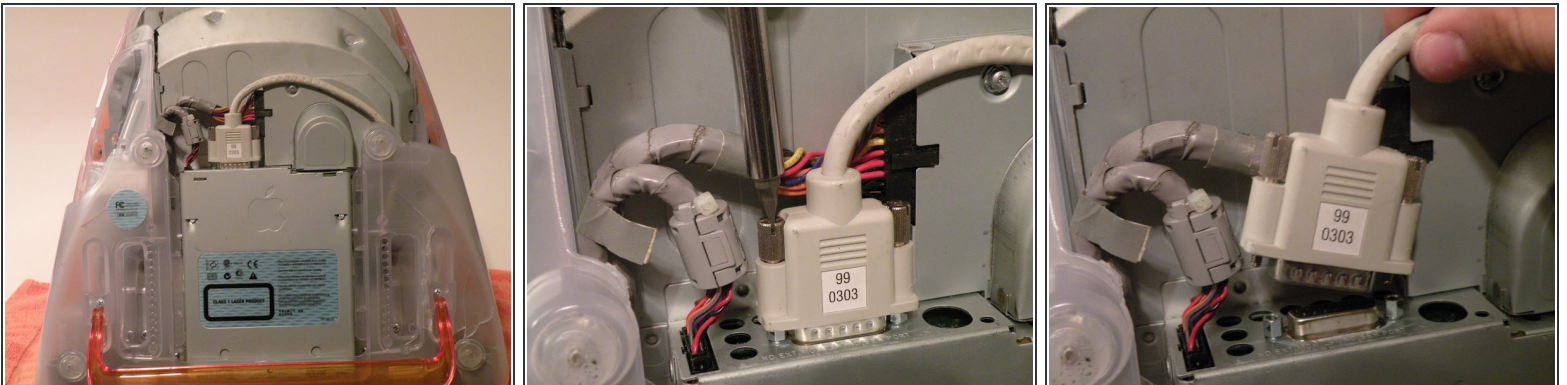
- Start by flipping the iMac upside-down. It may help to lay it on a towel, so you don't damage the screen, or scratch the face.

Step 3



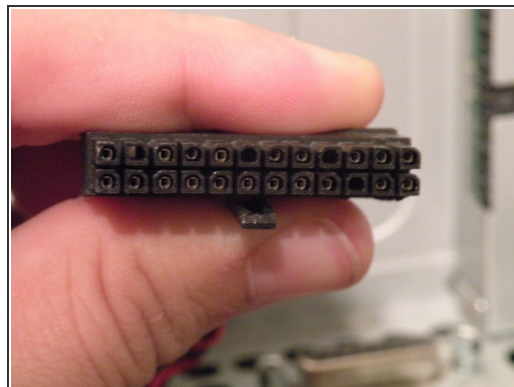
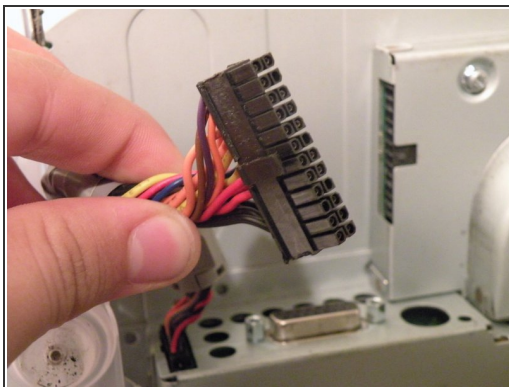
- Remove this Phillips screw.
- Using a flathead screwdriver, work your way around the bottom cover, until it comes off.
- Then, lift the bottom cover up and out, and set it aside.

Step 4



- Now, remove the DB-15 Video connector from the logic board.
- It may be helpful to use a Phillips screwdriver to remove the thumbscrews.

Step 5



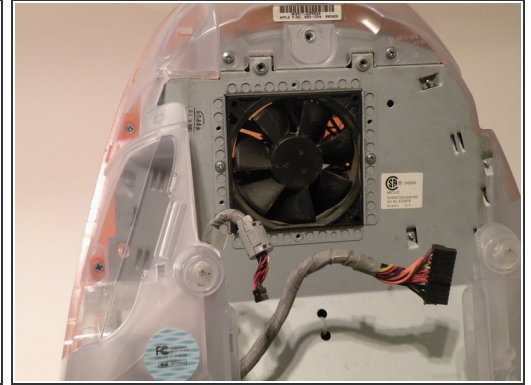
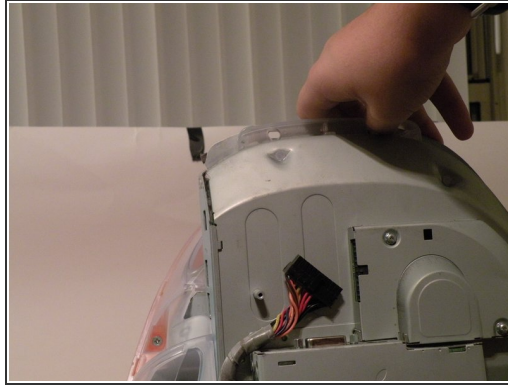
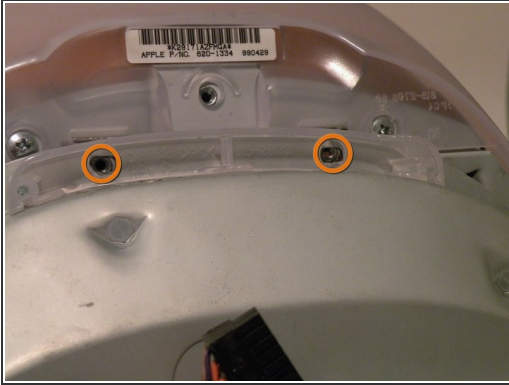
- Remove the power cable from the logic board assembly.

Step 6



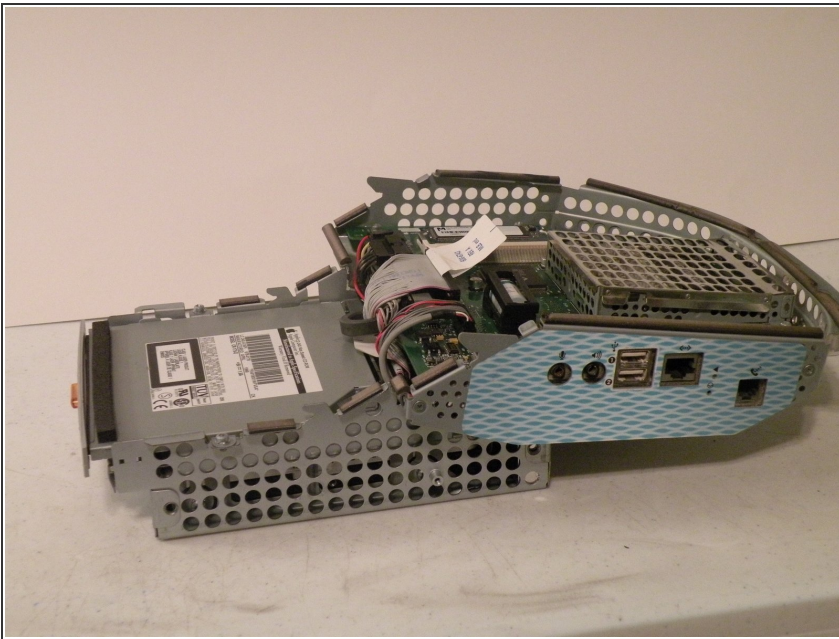
- Remove the front panel connector. (You may also need to remove an additional screw that connects the front panel connector to the logic board assembly).

Step 7



- Now, remove these Phillips screws.
- Now, grab the logic board assembly by the piece of plastic, and lift it out.

Step 8



- The logic board assembly. This is the heart of the computer, it contains the motherboard, CPU, RAM, V-RAM, PRAM battery, the hard drive, and the optical drive.

To reassemble your device, follow these instructions in reverse order.