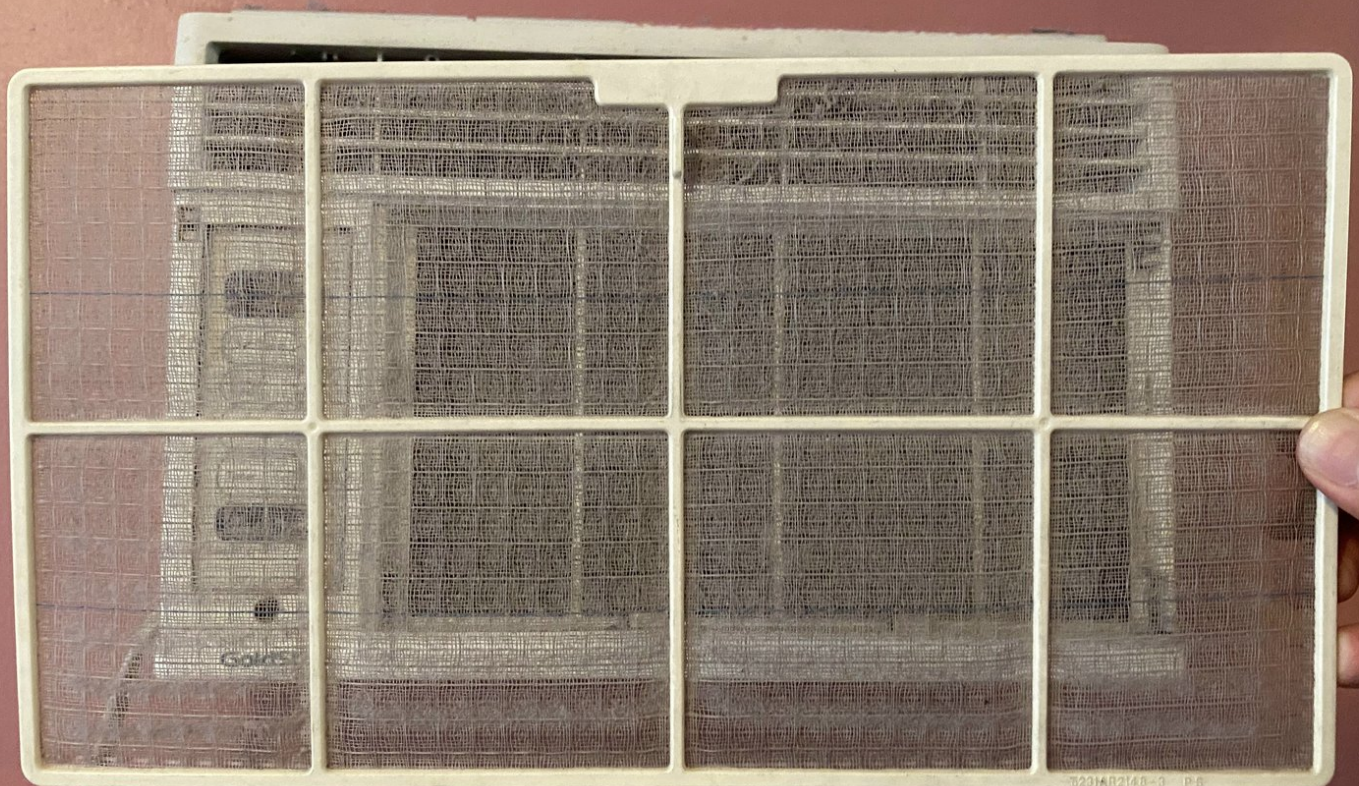




# How to Clean an LG Goldstar BG5200ER Air Conditioner Air Filter

This guide will teach individuals how to clean the air filter from an LG - Goldstar® 5,200 BTU Air Conditioner. (Model: BG5200ER)

Written By: Angel R. Mariscal



## INTRODUCTION

This guide will help you clean an air filter in an LG Goldstar 5,200 BTU Air Conditioner (Model: BG5200ER). The filter's purpose is to clean the air that circulates between the cooling and heating system. However, when the filter is cleaning the air, the filter traps mold and dust particles that build up over time. Not cleaning the filter can lead to health problems as well. Symptoms that can develop may include shortness of breath, fatigue, dizziness, congestion, and eye irritation.

Very minimal disassembly is involved; the only part that comes off is the air filter in Step 3. You do not need any technical skills to do this project.

Before using this guide, make sure that the air conditioner is disconnected and turned off to eliminate the chance of electrocution.

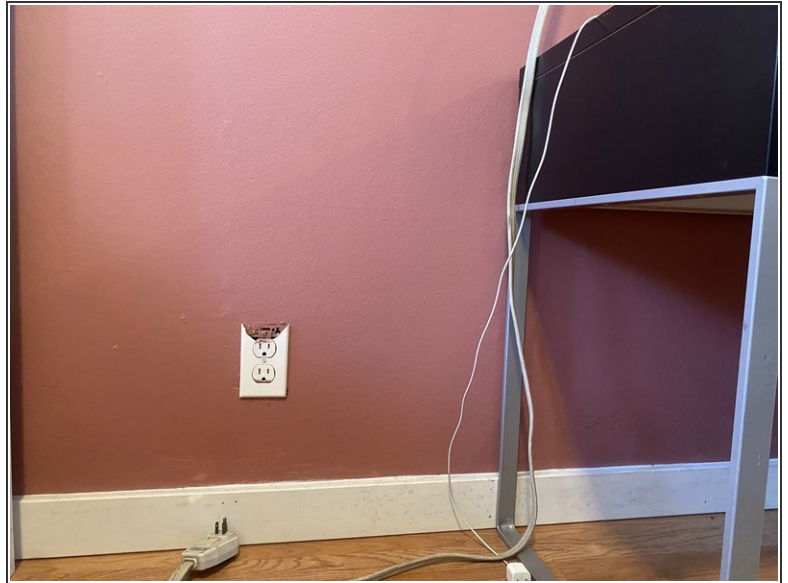
---

### TOOLS:

- [Towel](#) (1)
-



## Step 1 — How to Clean an LG Goldstar BG5200ER Air Conditioner Air Filter



- Turn off the air conditioner unit manually or with the remote control.
- Unplug the A/C unit from its power source.

## Step 2



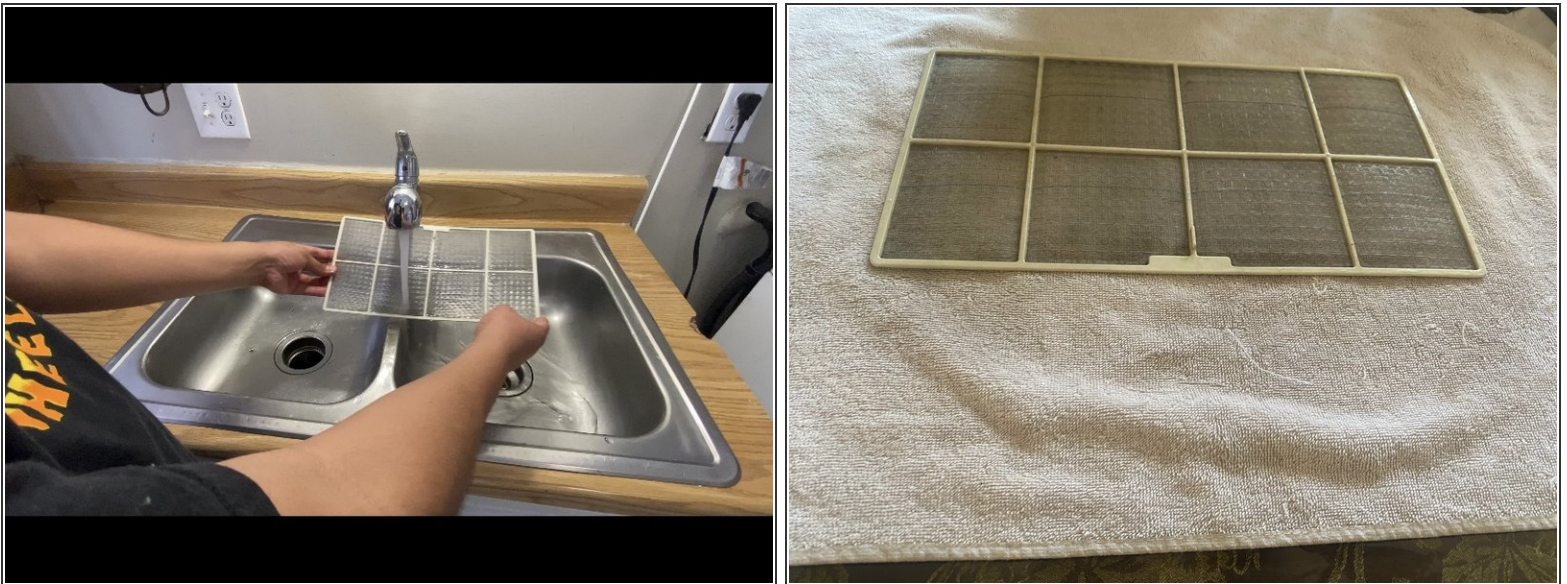
- Place your hands on the opposite sides of the air conditioner and unclip the grille from the unit.

### Step 3



- Gently grab the front grille and place it on the ground or table.
- Use your hands to pull the filter out of the unit

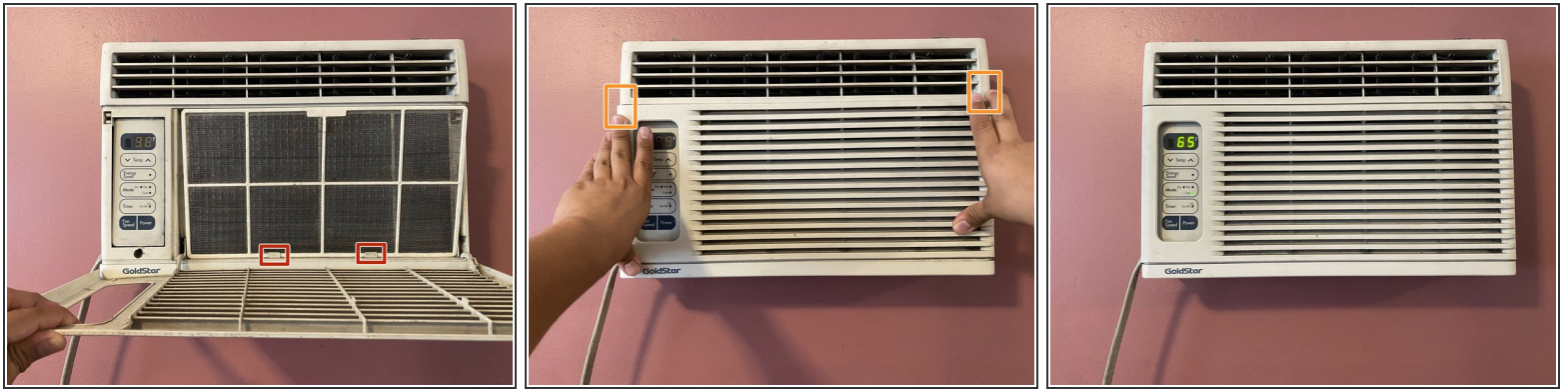
### Step 4



- Carry the filter to a faucet and flush with water to eliminate dust particles.
  - Lay down the clean air filter on a towel until it's completely dry.
  - ⓘ The filter will take about five to eight minutes to dry.
- ⚠ Do not place a wet filter back into the unit. Placing a damp filter in the unit can cause water damage to the air conditioner.**



## Step 5



- Replace the air filter between the front grille and evaporated coil.
- Clip the front grille back to the unit and push the grille to align the sides with the clips.

To reassemble the air conditioner, replug the A/C unit cord to the power outlet and turn it on.