



Apple Watch SE Mother Board Removal

For doing a teardown down to the Motherboard on an Apple Watch SE

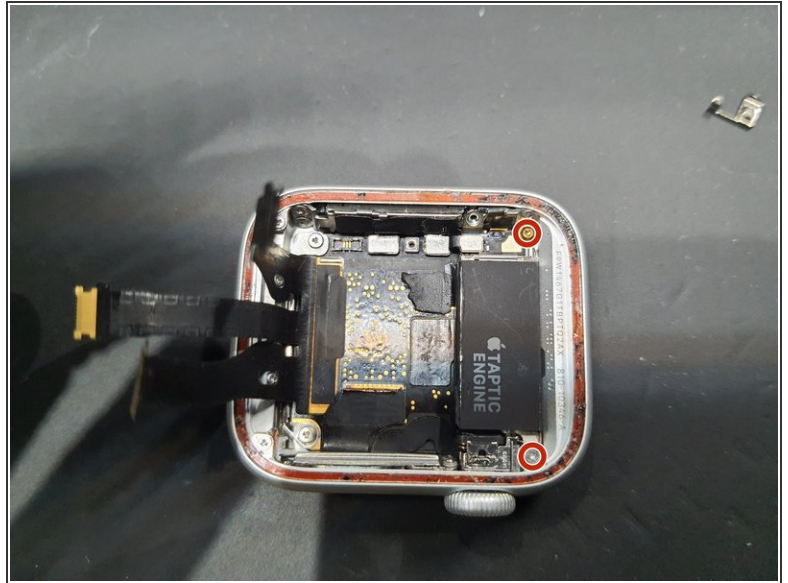
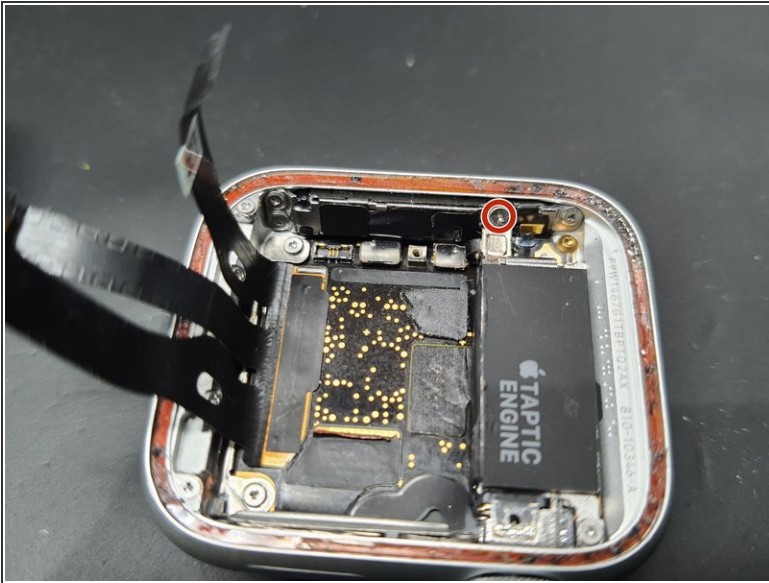
Written By: jessepugsley



INTRODUCTION

This Guide Picks up after the Battery and Screen Removal guides posted, all of the same tools are used.

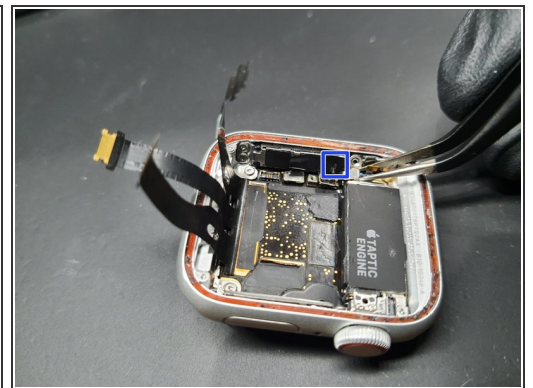
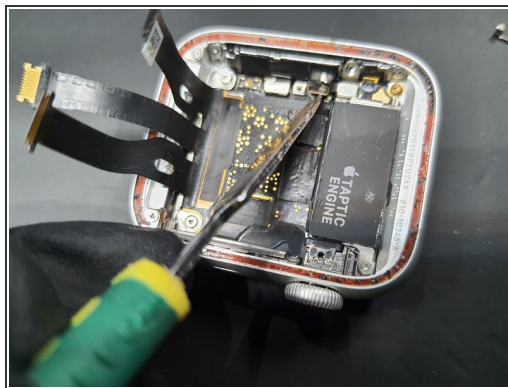
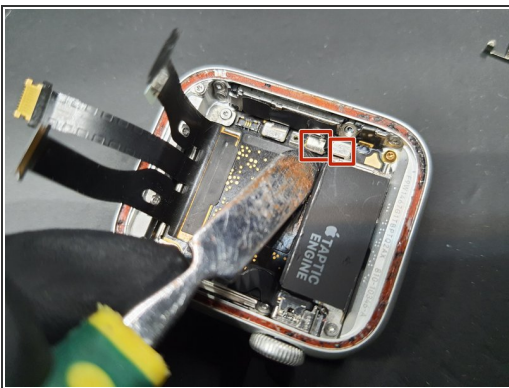
Step 1 — Removing the Taptic Engine



- Unscrew Tri-screw and remove small plate cover.

i Then, remove these two Tri-screws.

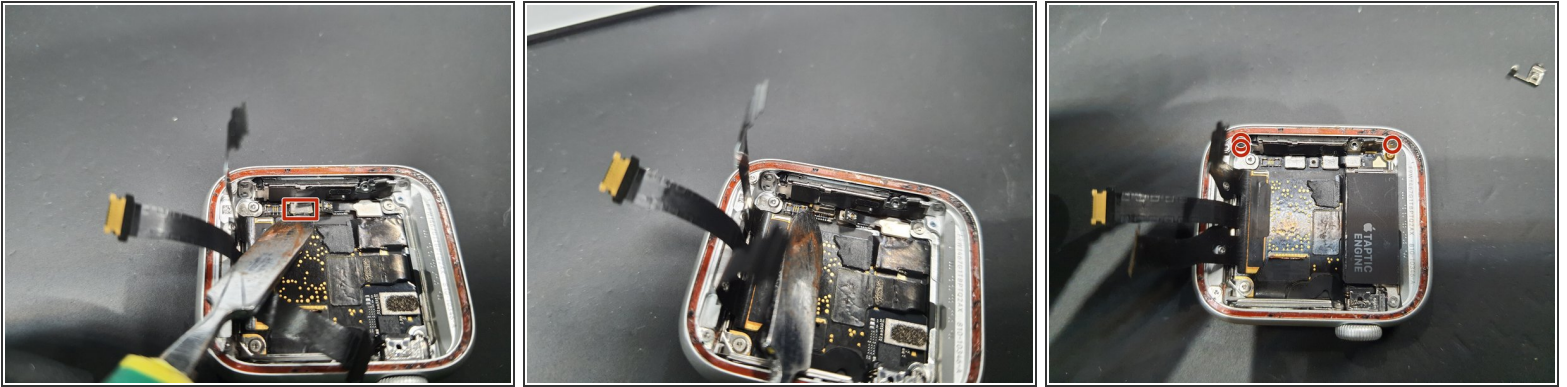
Step 2 — Removing the Taptic Engine pt. 2



- Undo both connectors highlighted.
- Then the Taptic engine should be able to be lifted out.

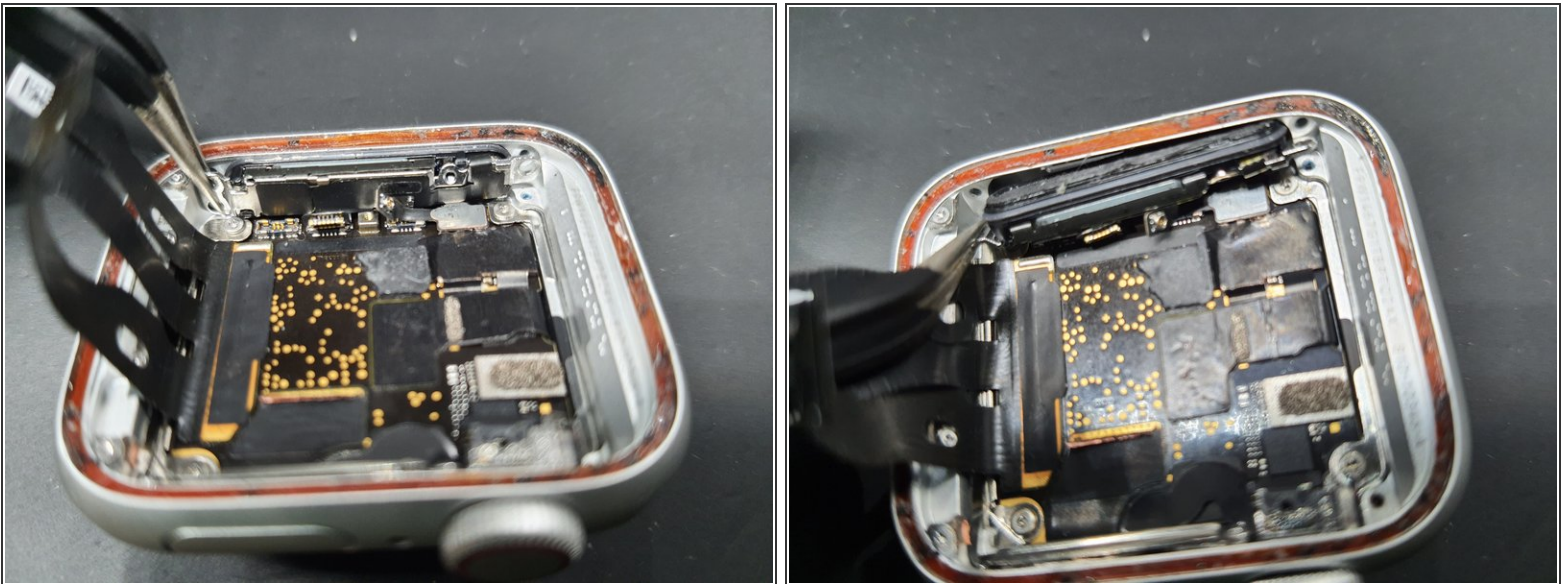
i The Taptic engine has some adhesive on the cable outlined in blue that sticks it to the speaker.

Step 3 — Removing the Speaker



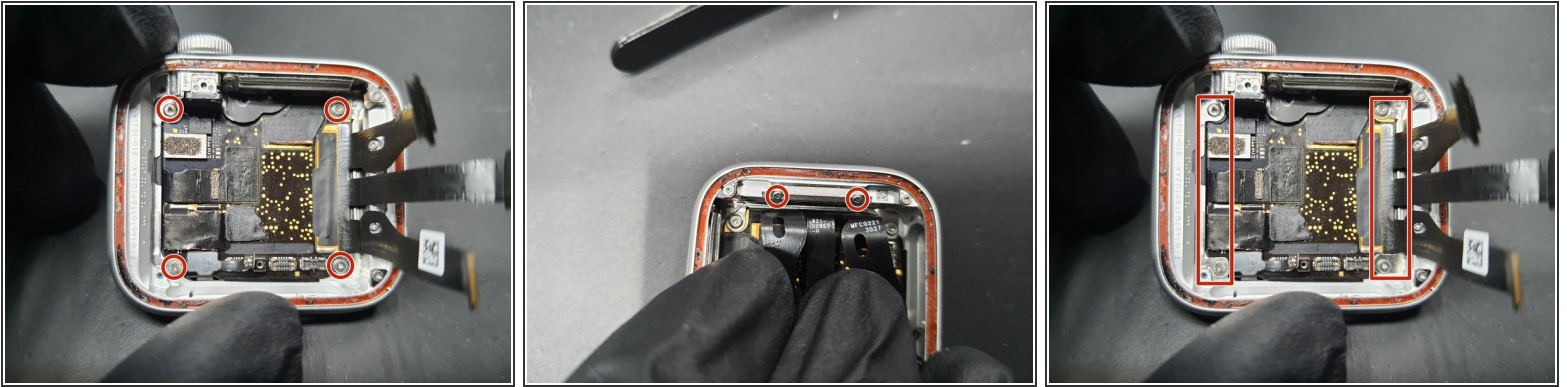
- Disconnect this connector.
- Then remove these 3 tri-screws.

Step 4 — Removing the Speaker pt. 2



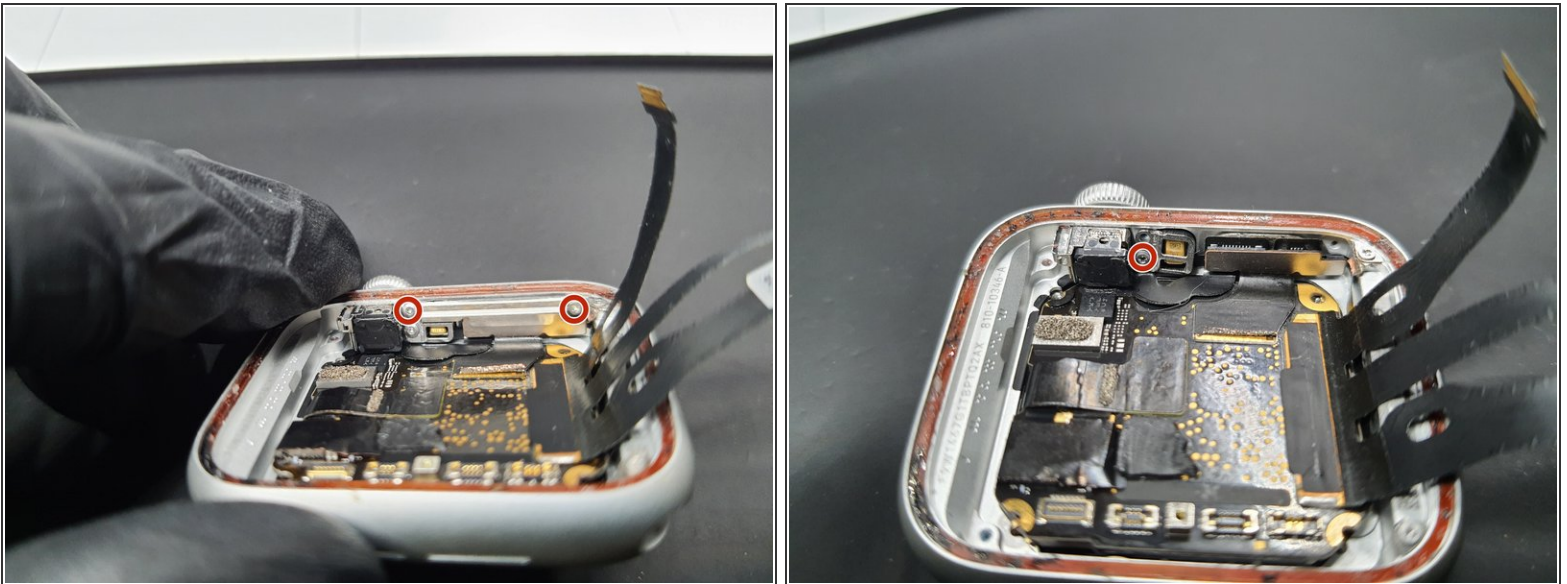
- Remove the speaker slowly.
- ⓘ Where my tweezers are located seems to be the best place to remove the speaker.

Step 5 — Removing Brackets around the MB



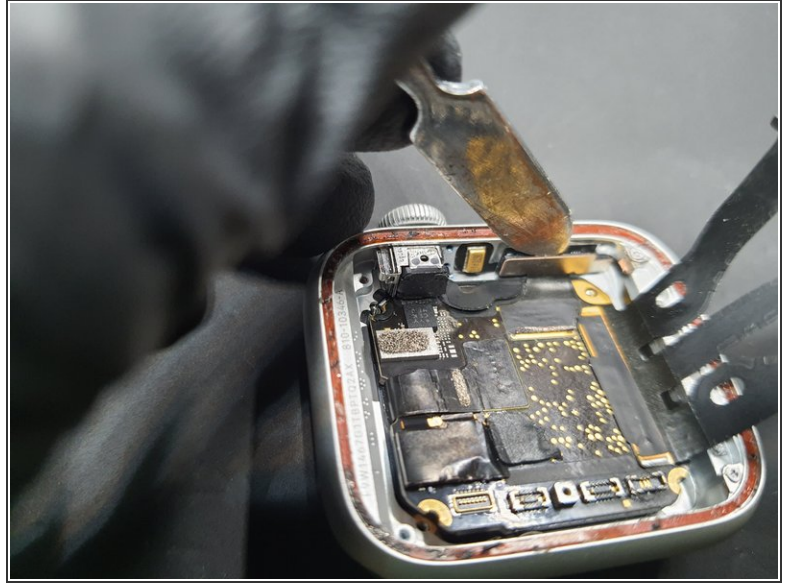
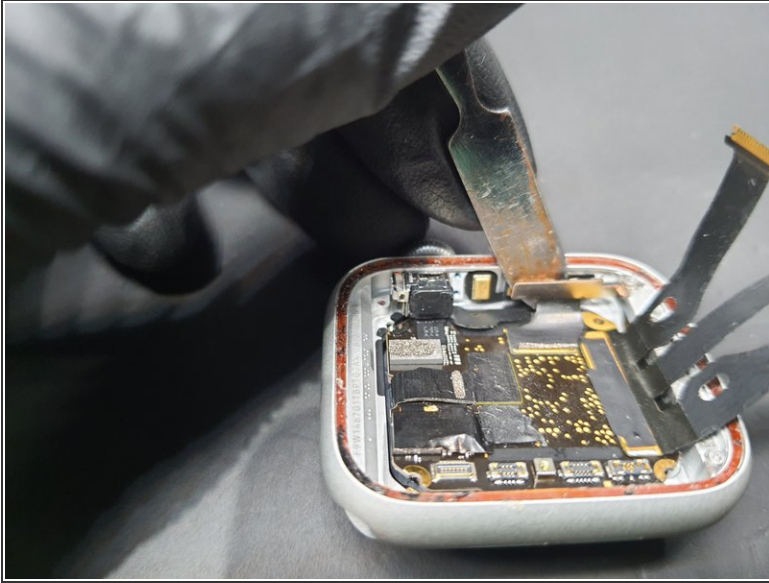
- 4 more Tri-screws are removed here.
- Gently pulling back the screen flex cables reveals 2 more Tri-screws that should be removed.
- Then the brackets can be removed with tweezers.

Step 6 — Removing Brackets around the Power Button



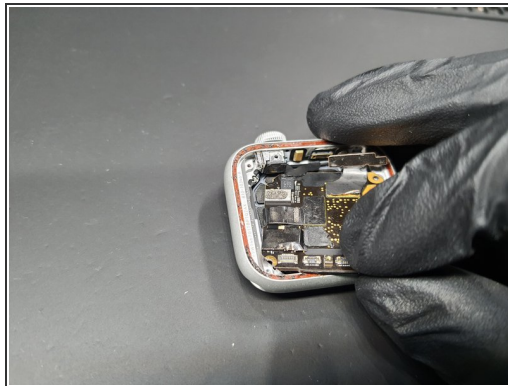
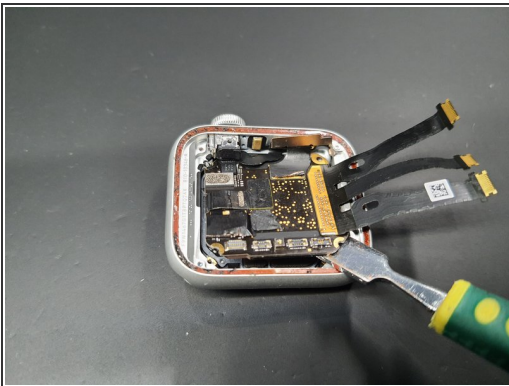
- Remove these 2 Tri-screws.
- After taking off the first bracket, take of the next Tri-screw and remove the second bracket.

Step 7 — Disconnecting Power button



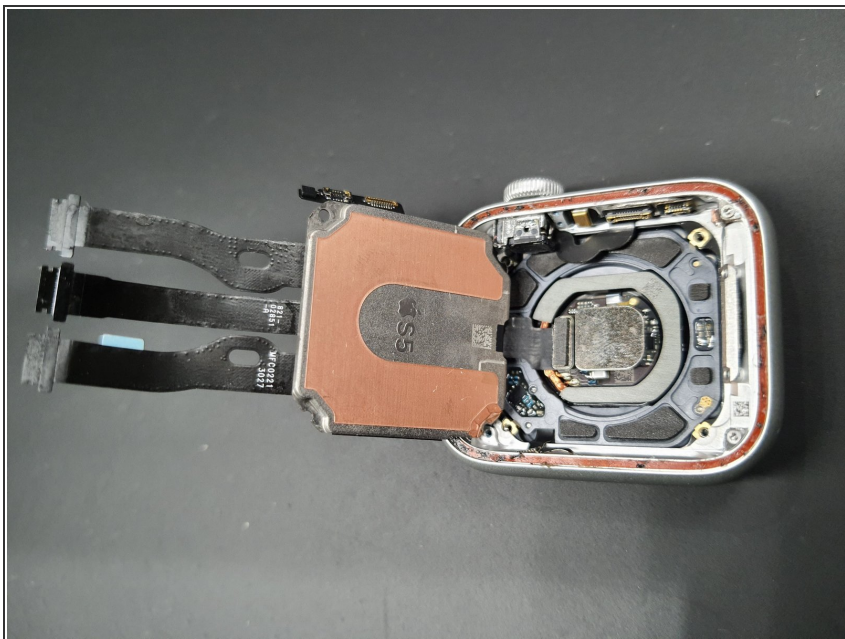
- Disconnect the Power button FPC.
- ⓘ The FPC here has 2 connections. DO NOT pry in the middle as it may bend.

Step 8 — Removing the MB.



- Starting in the bottom right corner as show here. Gently wedge in a spudger and pry up on the board.
- Once you are able to get a good hold on the board move try pulling down and to the right in a clockwork motion.
- ⓘ Do this motion slowly as there is a final connector under the board.

Step 9 — Completion



- Once the board is lifted out, the final connector is highlighted.
- Disconnect and you are all done!
- Repeat steps backwards to put everything back together.

To reassemble your device, follow these instructions in reverse order.