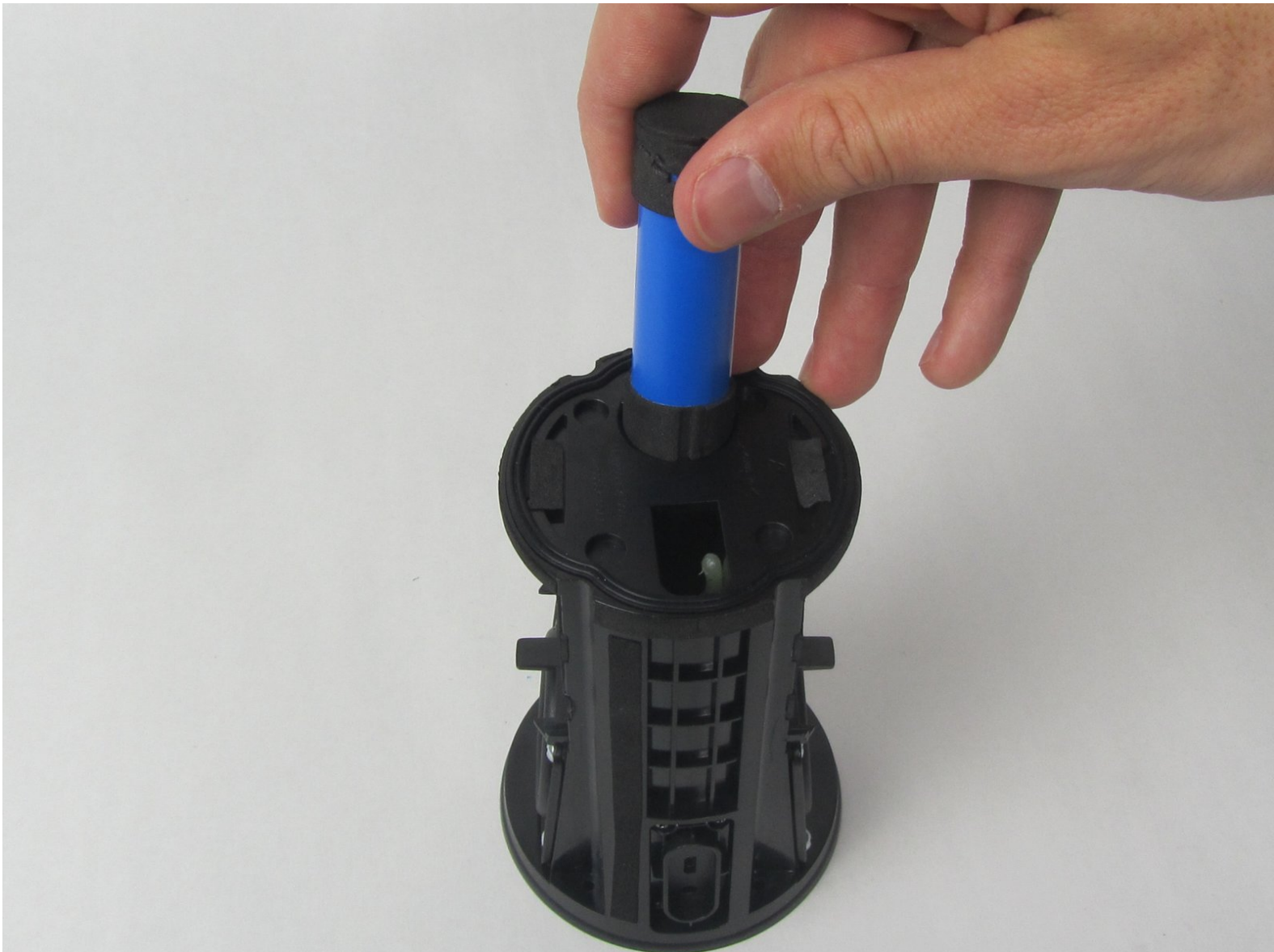




Anker Soundcore Flare Mini Battery Replacement

This guide will show you how to replace the battery in the Anker Soundcore Flare Mini A3167.

Written By: Ethan Holland



INTRODUCTION

The battery of the Anker Soundcore Flare Mini speaker is what holds a charge and creates power for the device. Without the battery, the speaker would not be able to function which makes it an essential component.

Before starting the replacement, make sure the speaker is turned off and is unplugged from the power cord!




TOOLS:

- [Spudger](#) (1)
 - [Precision Tweezers Set](#) (1)
 - [Phillips #000 Screwdriver](#) (1)
 - [Phillips #1 Screwdriver](#) (1)
-

Step 1 — Bottom Cover



 The rubber cover of the speaker is glued down.

- Use precision tweezers to peel the rubber cover off of the bottom of the speaker.

Step 2



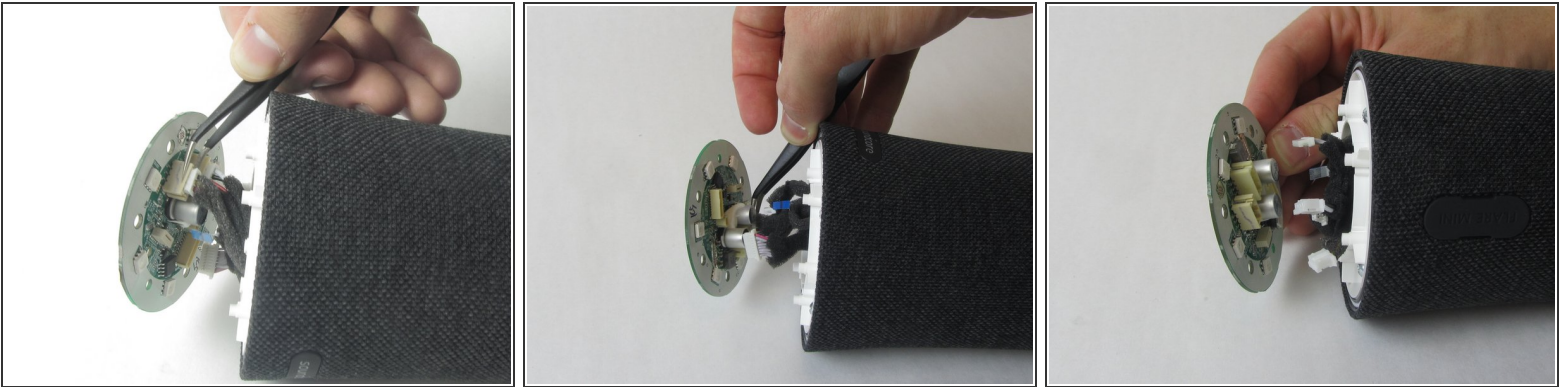
- Remove six 10 mm screws holding the plastic cover in place using a Phillips #000 screwdriver.
- Use your hand to pull the plastic cover off the bottom of the speaker.

Step 3 — Motherboard



- Remove the single 10 mm screw holding the motherboard in place using a Phillips #000 screwdriver.
- Lift the motherboard up.
- ⓘ The motherboard is still attached to several wires underneath.

Step 4



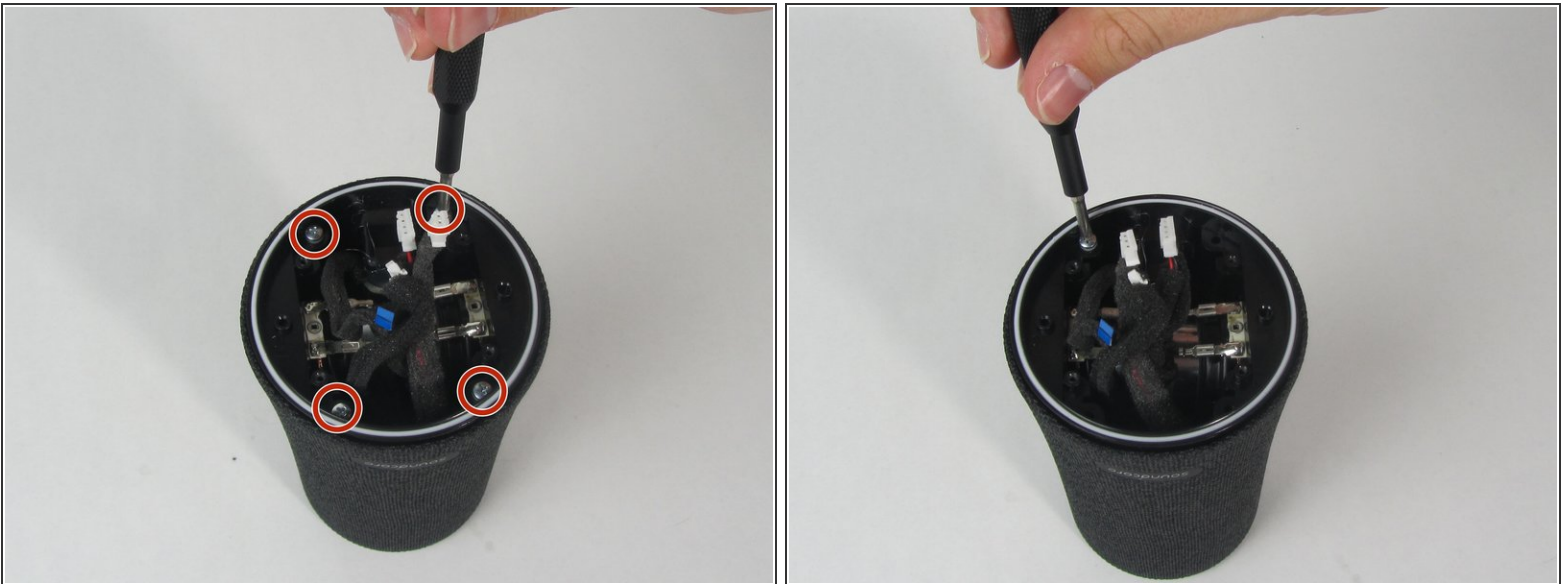
- Use precision tweezers to firmly grasp the five power connectors and detach them from the back of the motherboard.
- ⚠ When removing the power connectors, do not pull the wires themselves.
- Remove the motherboard from the speaker.

Step 5 — Waterproof Outer Shell



- Remove the four 11 mm screws from the white plastic cover using a Phillips #1 screwdriver.
- Remove the white plastic cover from the speaker.

Step 6



- Remove the other four 11 mm screws holding the outer shell in place with a Phillips #1 screwdriver.

Step 7



- Pull the charging port away from the side of the speaker.

Step 8



- Use a spudger to loosen the cover from the inner components of the speaker.
- Slide the cover completely off.
- ❗ One wire will still be connected to the shell.

Step 9 — Battery



- Use a spudger to pry the battery out.
 - ⓘ It will be tough to start, but once you work the top part of the battery out with the spudger, you can pull it the rest of the way by hand.

To reassemble your device, follow these instructions in reverse order.