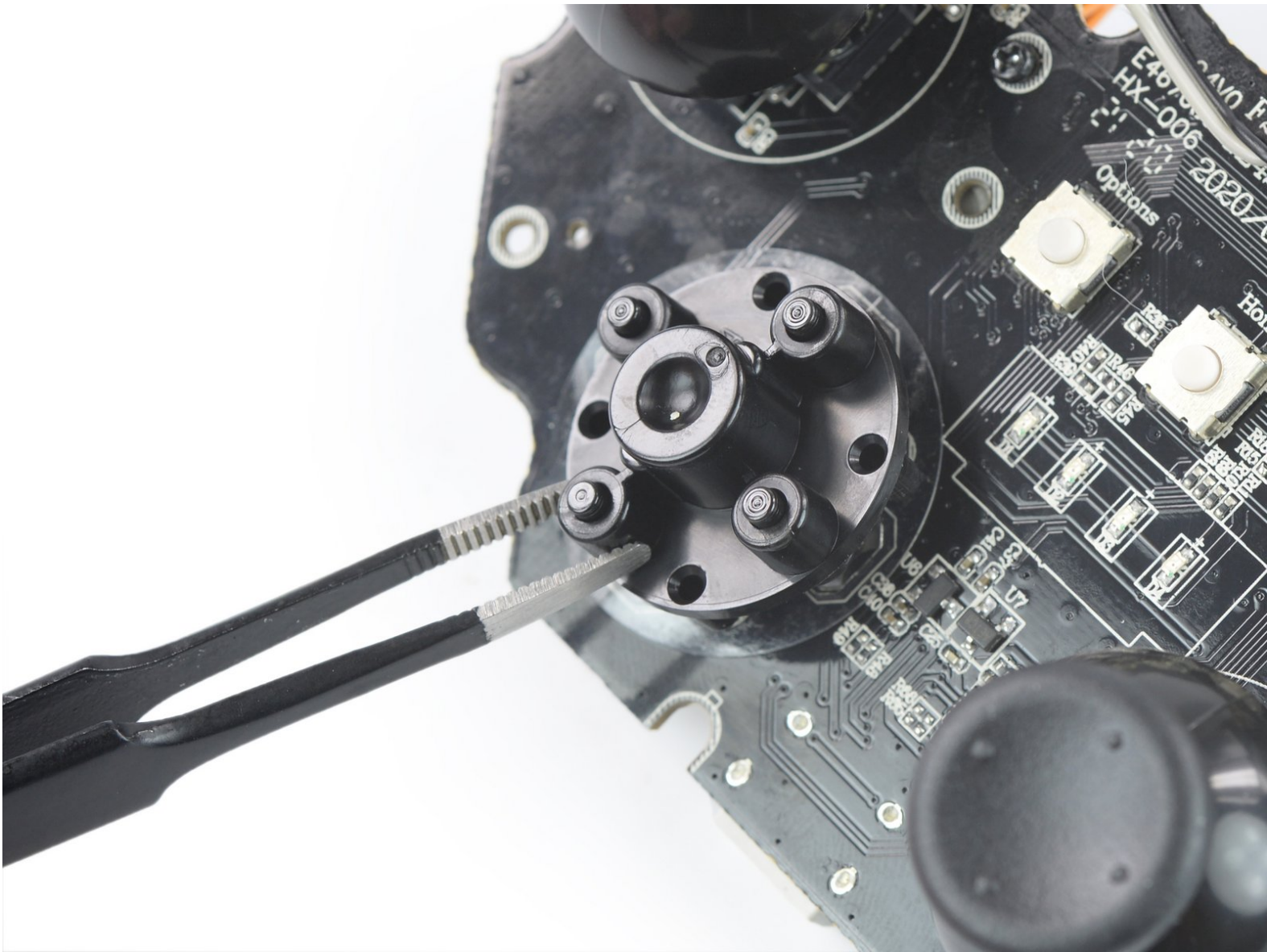




# Rotor Riot Direction Pad Replacement

How to replace the direction pad on your Rotor Riot Controller.

Written By: Adriana Zwink



# INTRODUCTION

Use this guide to replace the direction pad on your Rotor Riot controller.



## TOOLS:

- [ESD Safe Tweezers Blunt Nose](#) (1)
  - [Spudger](#) (1)
  - [TR6 Torx Security Screwdriver](#) (1)
  - [Phillips #00 Screwdriver](#) (1)
-

## Step 1 — Remove the iPhone mount



- Use your fingers to remove the screw on the back side of the controller securing the iPhone mount.
- Remove the iPhone mount.

## Step 2 — Unscrew the back cover



- Use a T6 Torx screwdriver to remove the eight 9.2 mm-long screws securing the back cover.

**⚠ Don't try to remove the back cover all the way yet! It's still connected to the mainboard.**

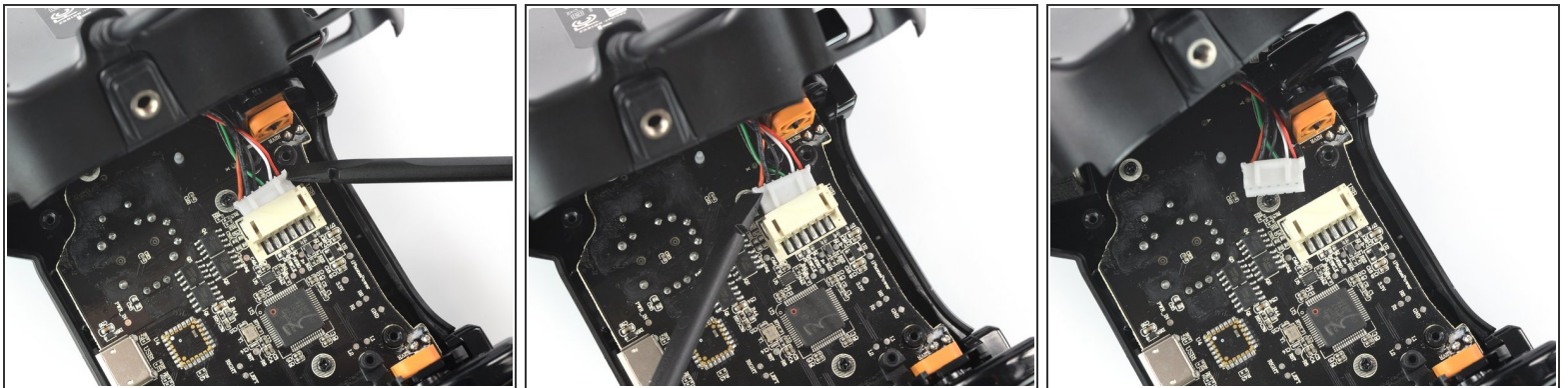
### Step 3 — Swing open the back cover



- Lift up the back cover of the controller.
- Lift the back cover to a 45 degree angle and place it next to the controller.

**⚠ Don't strain the interconnect cable during this procedure.**

### Step 4 — Disconnect the phone connector cable



- Use a spudger to disconnect the phone connector cable from the mainboard.



## Step 5 — Remove the back cover



- Remove the back cover.

## Step 6 — Remove the shoulder buttons



- Remove the shoulder buttons by lifting them out of the case.

## Step 7 — Unscrew the mainboard



- Use a Phillips screwdriver to remove the four 7.0 mm-long screws securing the mainboard.

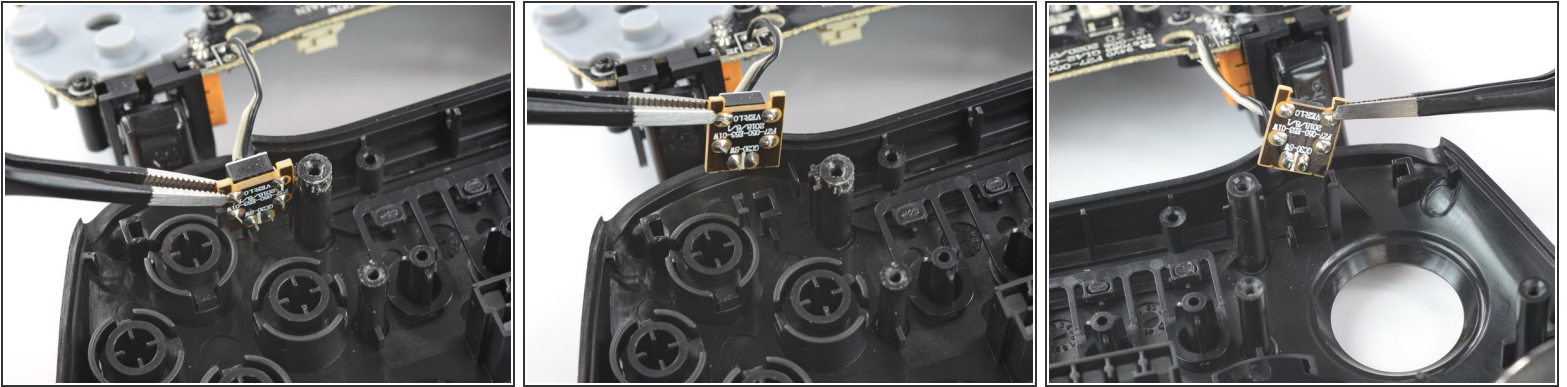
## Step 8 — Flip over the mainboard



- Flip over the mainboard and place it above the controller housing.

**⚠ Avoid tensioning the trigger button cables during this procedure and don't try to remove the mainboard all the way yet! It is still connected to the controller housing.**

## Step 9 — Disconnect the trigger buttons



- Use a pair of blunt nose tweezers to remove the left trigger button from the controller housing by lifting it straight out of its recess.
- Repeat this procedure for the right trigger button.

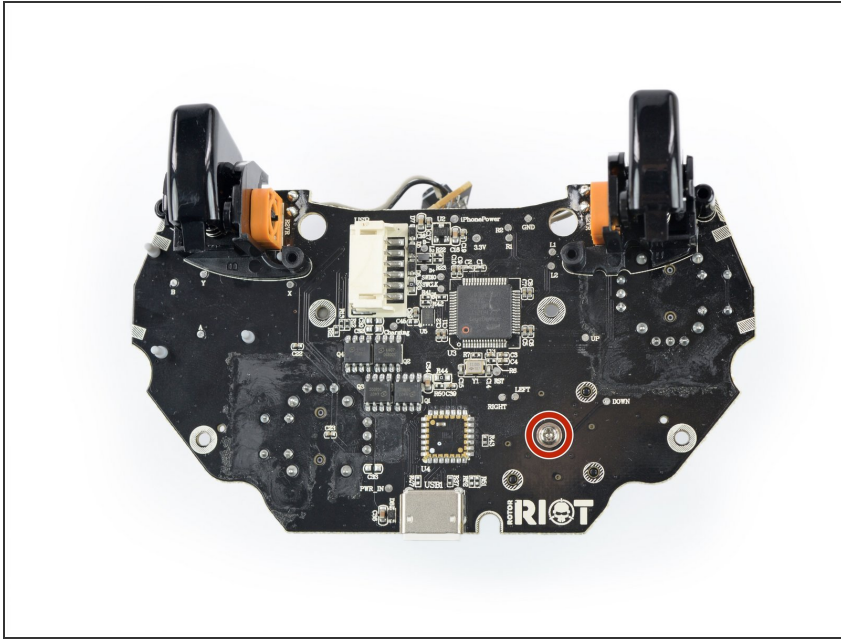
## Step 10 — Remove the mainboard



- Remove the mainboard from the housing.

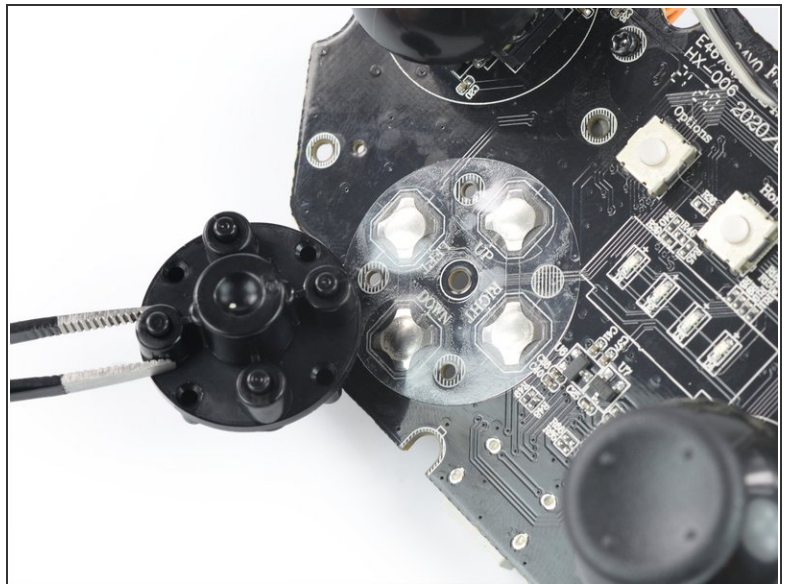
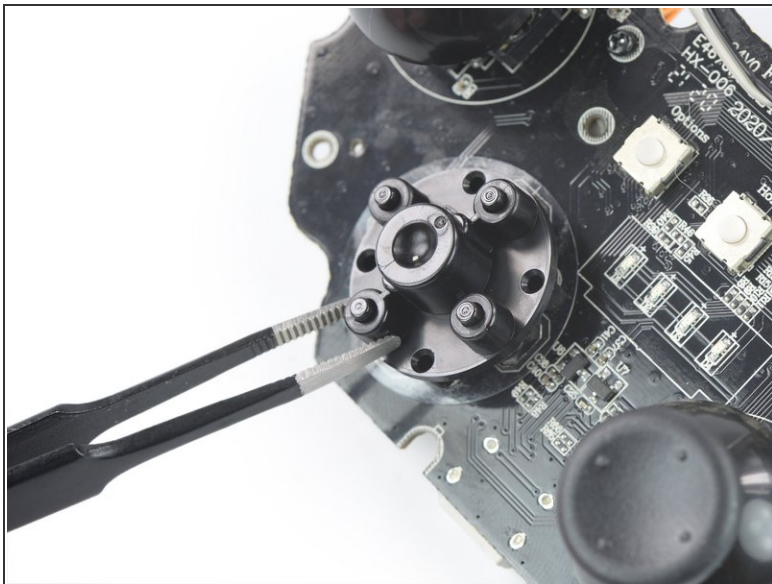


## Step 11 — Unscrew the direction pad



- Use a Phillips screwdriver to remove the 7.25 mm-long screw on the mainboard securing the direction pad.

## Step 12 — Remove the direction pad



- Use a pair of blunt nose tweezers to remove the direction pad.



**To reassemble your device, follow these instructions in reverse order.**

Take your e-waste to an [R2 or e-Stewards certified recycler](#).

Repair didn't go as planned? Try some [basic troubleshooting](#), or ask our [Answers community](#) for help.