



Rotor Riot Face Button Replacement

How to replace the face buttons on your Rotor Riot controller.

Written By: Adriana Zwink



INTRODUCTION

Use this guide to replace the face buttons on your Rotor Riot controller.



TOOLS:

- [ESD Safe Tweezers Blunt Nose](#) (1)
 - [Spudger](#) (1)
 - [TR6 Torx Security Screwdriver](#) (1)
 - [Phillips #00 Screwdriver](#) (1)
-

Step 1 — Remove the iPhone mount



- Use your fingers to remove the screw on the back side of the controller securing the iPhone mount.
- Remove the iPhone mount.

Step 2 — Unscrew the back cover



- Use a T6 Torx screwdriver to remove the eight 9.2 mm-long screws securing the back cover.

⚠ Don't try to remove the back cover all the way yet! It's still connected to the mainboard.

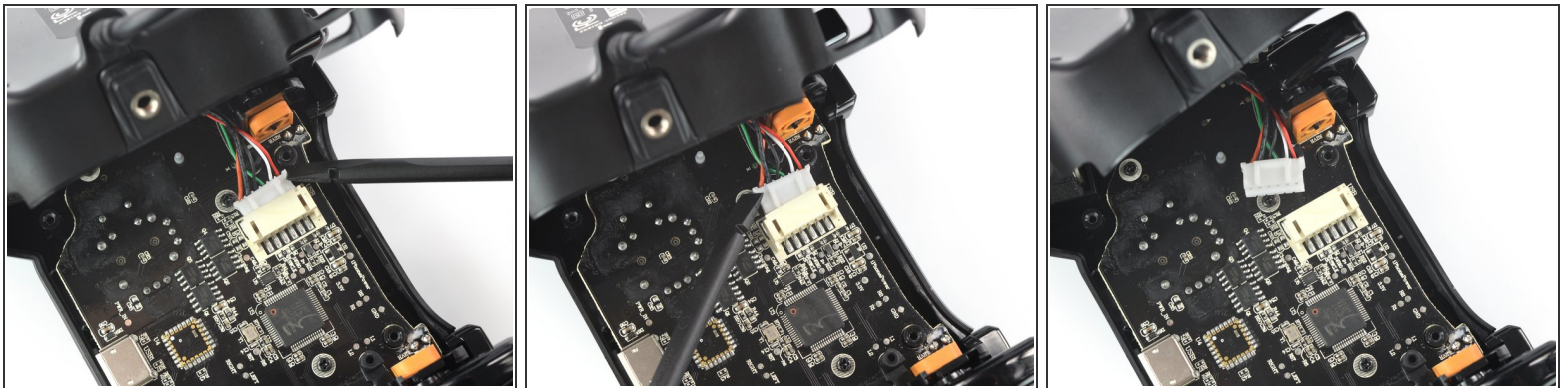
Step 3 — Swing open the back cover



- Lift up the back cover of the controller.
- Lift the back cover to a 45 degree angle and place it next to the controller.

 **Don't strain the interconnect cable during this procedure.**

Step 4 — Disconnect the phone connector cable



- Use a spudger to disconnect the phone connector cable from the mainboard.

Step 5 — Remove the back cover



- Remove the back cover.

Step 6 — Remove the shoulder buttons



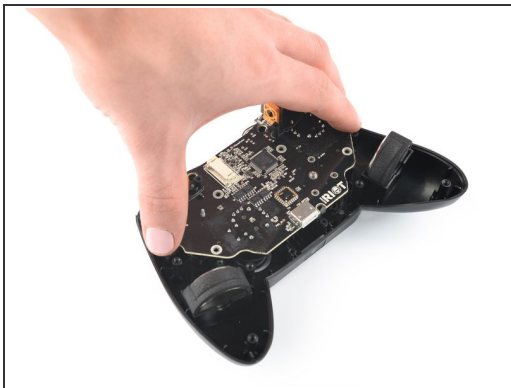
- Remove the shoulder buttons by lifting them out of the case.

Step 7 — Unscrew the mainboard



- Use a Phillips screwdriver to remove the four 7.0 mm-long screws securing the mainboard.

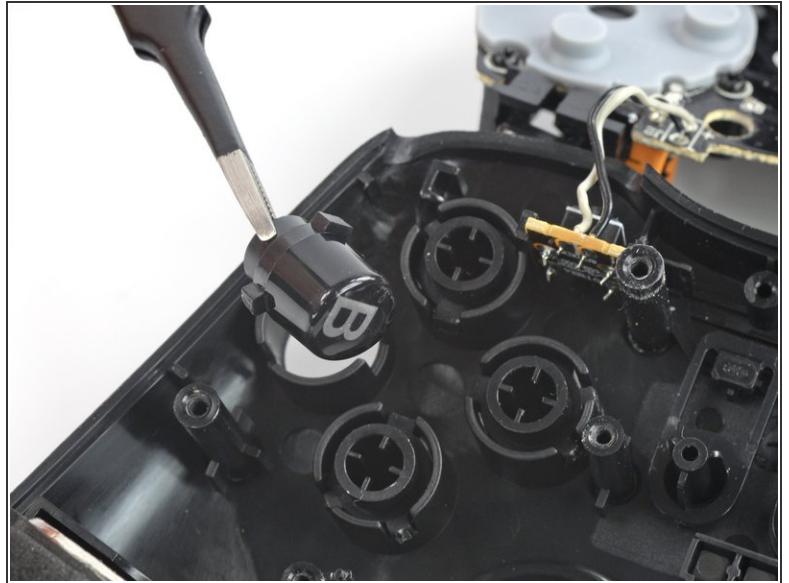
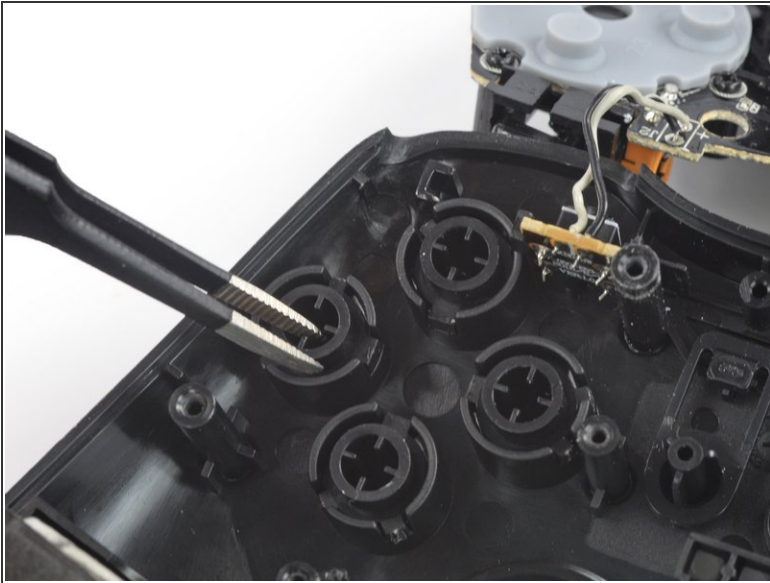
Step 8 — Flip over the mainboard



- Flip over the mainboard and place it above the controller housing.

⚠ Avoid tensioning the trigger button cables during this procedure and don't try to remove the mainboard all the way yet! It is still connected to the controller housing.

Step 9 — Remove the face buttons



- Use a pair of tweezers to remove the face buttons from the housing.
- ☑ The alignment pegs on each button are designed to prevent incorrect installation. Make sure your new buttons fit properly in the controller case.

To reassemble your device, follow these instructions in reverse order.

Take your e-waste to an [R2 or e-Stewards certified recycler](#).

Repair didn't go as planned? Try some [basic troubleshooting](#), or ask our [Answers community](#) for help.