



# Disassembling the Thomas Ride On Train

The train is fairly easy to access, needing just a philips screwdriver to remove the screws. Take note that some of the screws are a different size so be aware of where those come from.

Written By: Andy from Workshopshed



---

## INTRODUCTION

My Thomas had already been modified when I received it, the battery had been replaced and the wagon and charger were missing. The train was none functional so needed to open it up to see why.

### Note

The battery may still contain charge so be careful not to short out the connectors

---



### TOOLS:

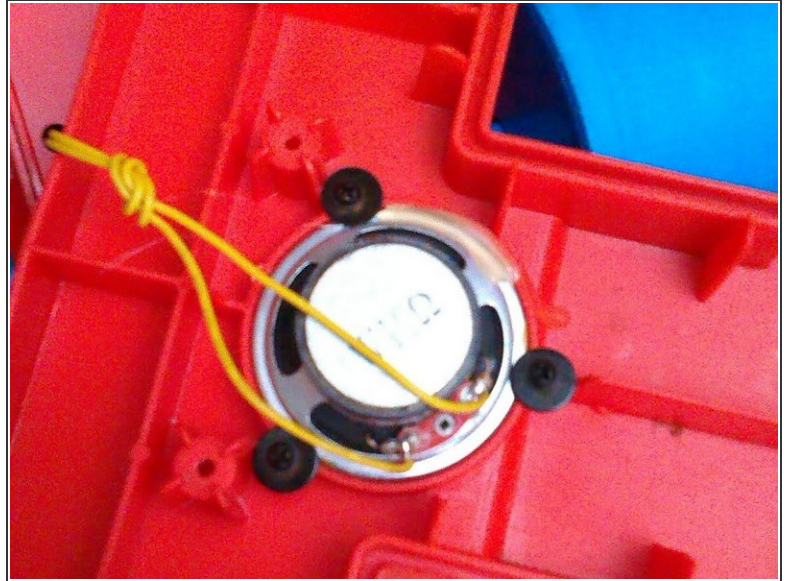
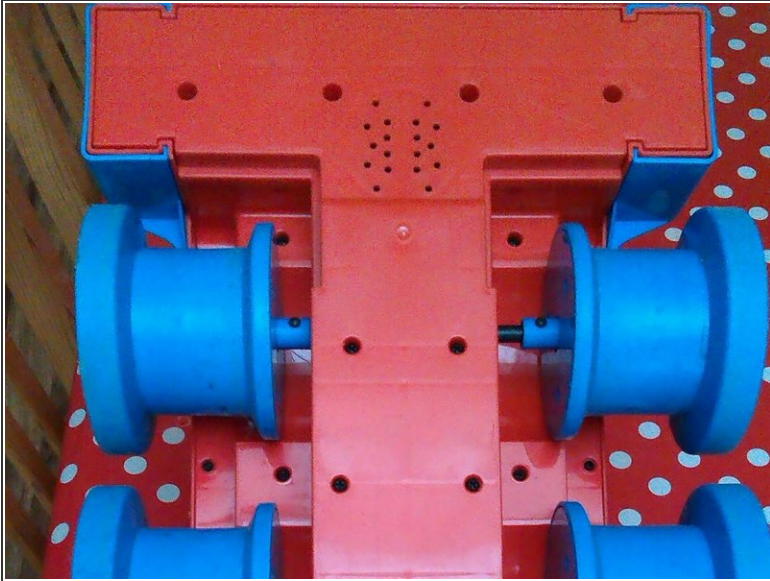
- [1.5" Thin Putty Knife](#) (1)
  - [stubby phillips #1 Screwdriver](#) (1)
  - [Phillips #1 Screwdriver](#) (1)
-

## Step 1 — Preparation



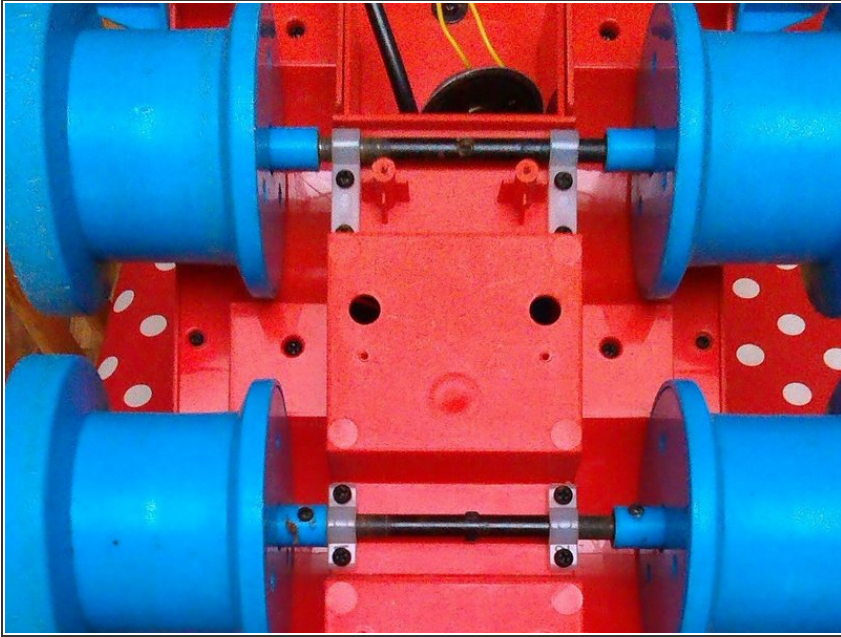
- You will need quite a lot of space to work on the engine as it effectively has to be stripped right down to get to the key components
- Before commencing, remove the battery from the system. This will make the train lighter and avoid any electrical issues. See Replacing the battery guide.

## Step 2 — Removing the wheel cover



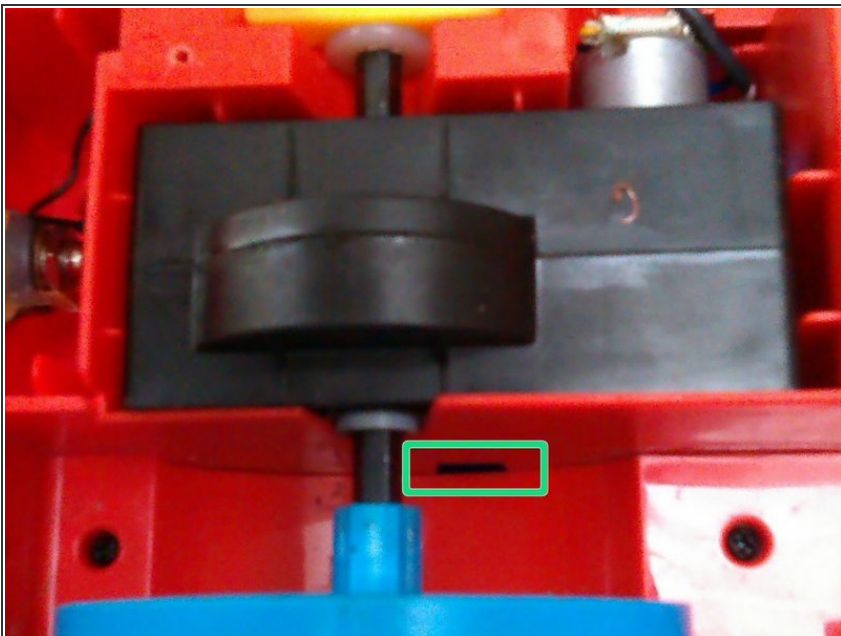
- Turn the train upside down
- Remove the screws down the centre and across the front to release the wheel cover
- ⓘ You may need to lever the cover out at the front with something like a putty knife
- Remove the loudspeaker by unscrewing the 3 screws that attach it to this cover.

### Step 3 — Removing the front wheels



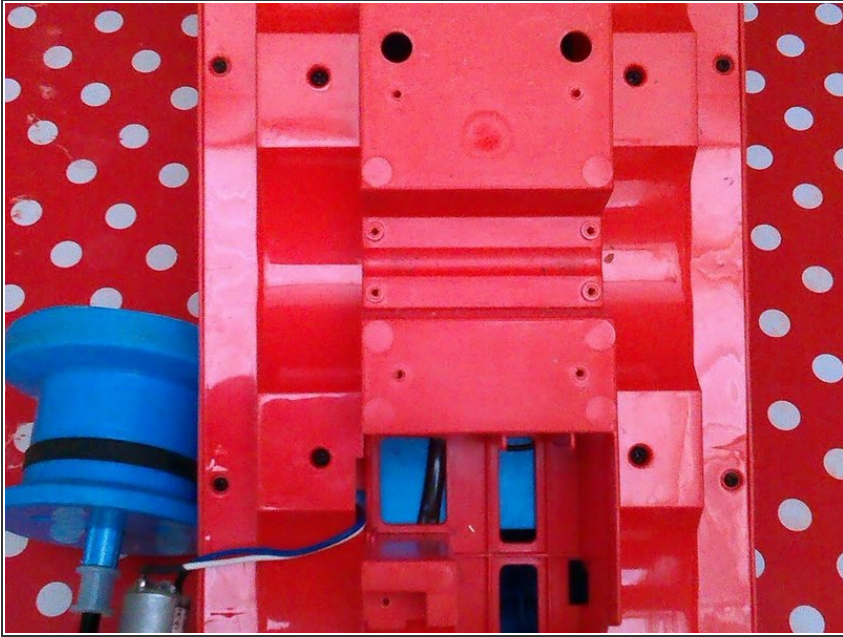
- The front two pairs of wheels are screwed on with self tapping screws. Remove the four screws that hold on each of the wheels and keep safe
- **Reassembly**
- When screwing the wheels back on note that there are counterbores in the plastic clips that fit onto the raised parts on the case

### Step 4 — Removing the engine



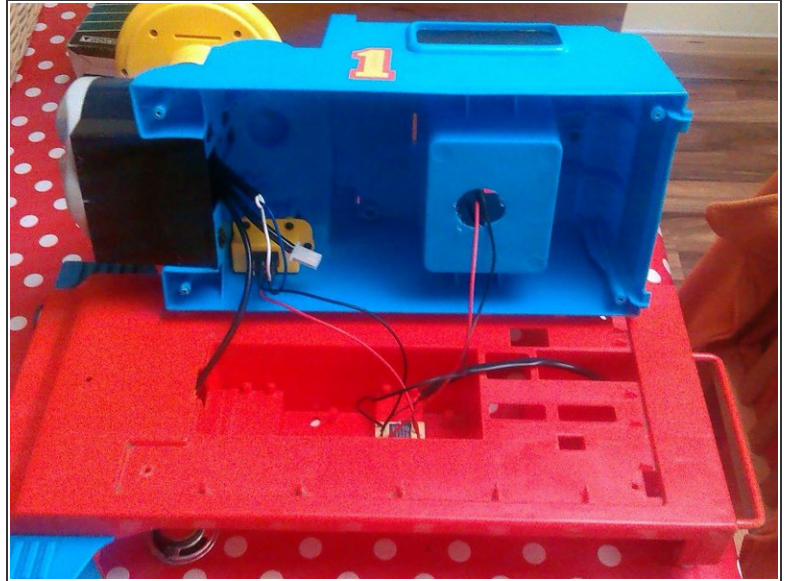
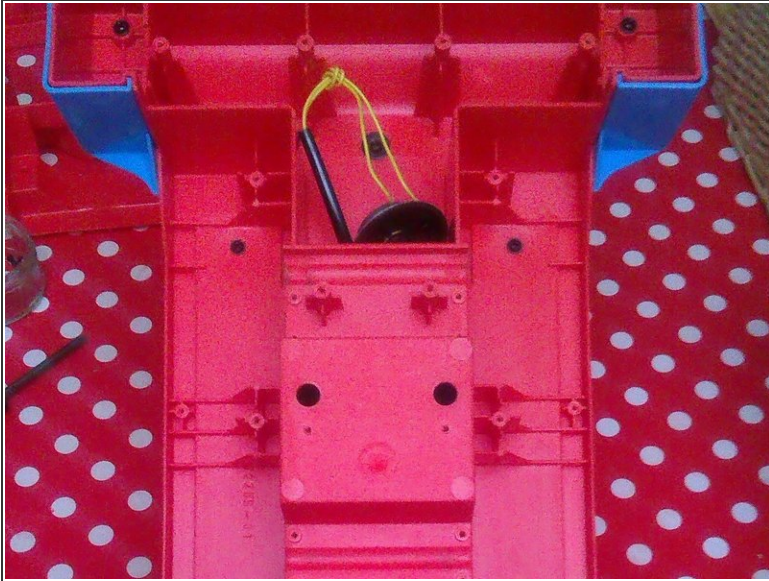
- The electric motor is held in place by two different things.
- Firstly two screws and a yellow plastic bracket.
- Also on the right is a clip that hold the motor and gearbox in place. You can release this by inserting a pallet knife or a screwdriver between the motor and case
- Note that you won't be able to completely remove the engine at this point as it is still connected by wires

## Step 5 — Removing the side panels



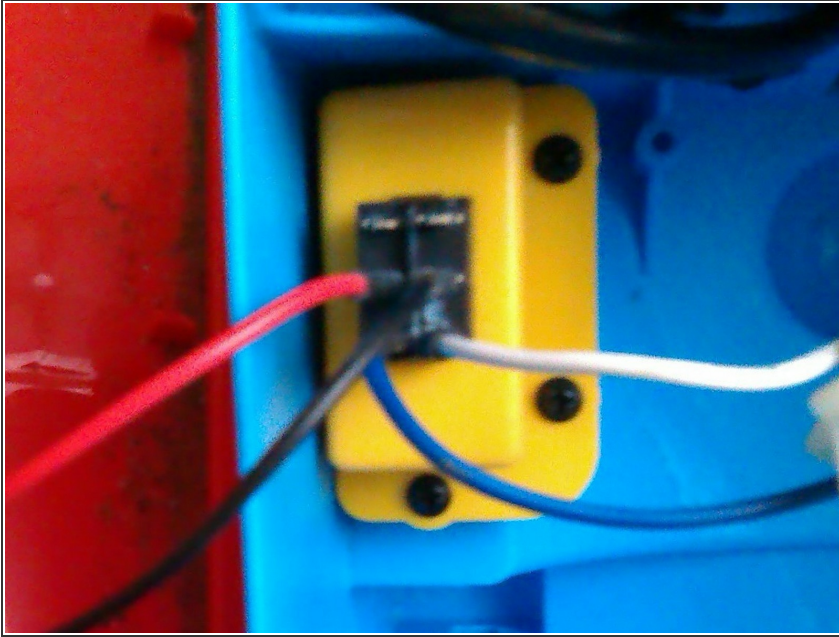
- Over the wheel arches are 2 more plastic panels, they are held in place by screws. Note that the outer screws are a smaller size.

## Step 6 — Removing the body



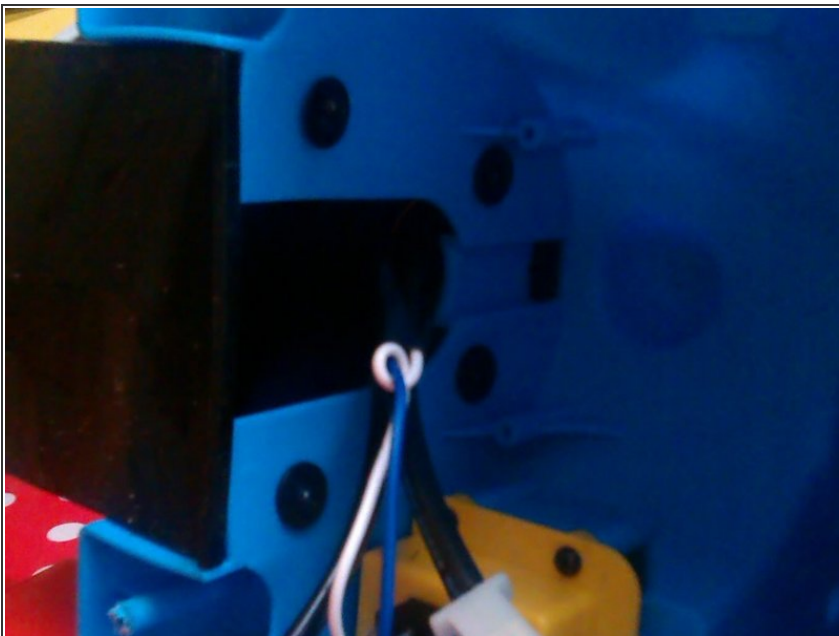
- The next 5 screws hold the body to the chassis. The top also is clipped in place at the back
- You can access most of the components at this point including disconnecting the motor and the power switch
- **Reassembly**
- Take care not to trap wires, you should be able to route the cables around the case

## Step 7 — Power Switch



- The power is connected via spade connectors.
- ☑ Make a note of their position before removing.
- By removing the three screws you can access the switch which is an off the shelf double pole double throw switch but only one throw is used.
- This had broken in my train but I simply reversed it to use the other throw which did work correctly. This might be an option if you can't find a replacement part.

## Step 8 — Removing the chimney



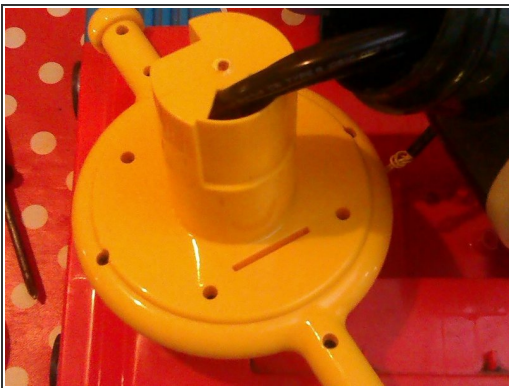
- To access the controls you need to remove the chimney, this step may require a shorter or stubby screwdriver
- Once the screws are removed the chimney slides up with respect to the body
- **Reassembly**
- Take care to ensure that all of the wires pass through the large hole and are not trapped

## Step 9 — Removing the handlebars



- A single screw inside the chimney holds this in place, again you may need a short screwdriver to access this

## Step 10 — Removing the console



- The console is held in place by the 4 inner screws, note you don't need to remove the outer screws or screws in the handlebars
- Note how the block attached to the lever is positioned against the switch. In my train this was 180degrees reversed and hence the lever did not do anything.
- The three buttons need to be correctly orientated, they have little bars to fit into slots
- Note the newer model may look slightly different to this

To reassemble your device, follow these instructions in reverse order.