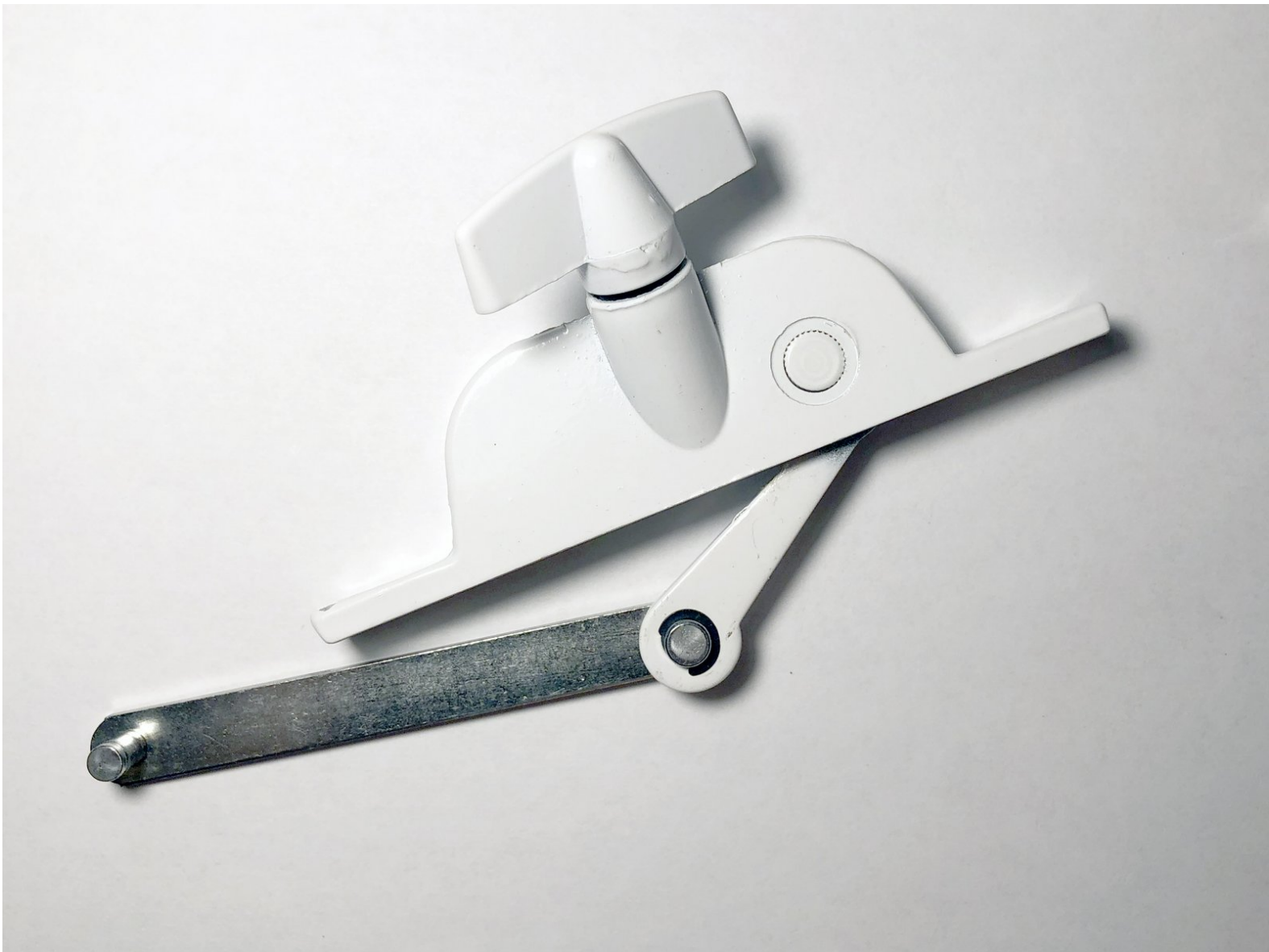




Window Operator Link Replacement

Replacing a Awning Window Operator Link is a relatively simple process that most people can accomplish at home.

Written By: Alondra M. Soto Vega



INTRODUCTION

Use this guide to replace a warped or broken window operator link in your awning window.

The window operator is a mechanical piece that enables the opening and closing of an awning window easily. Warped or broken links on a window interfere with the opening and closing of the window. The links are inexpensive to replace, and this fix can be done in a matter of minutes. Additionally, repairing a warped link can help to minimize a functioning window operator waste.

Before using this guide, make sure to verify if the damaged part is the link and not the operator. Sometimes the aluminum window bents from the outside due to slams from tree branches, kids playing outside, etc. That could mean that the operator and the link are functioning well, but the window is stuck close. That can be resolved by finding the bent and with some pliers unbending the piece into its original state.

In Step 3, make sure that you hold the self-retaining nut from the window operator. Since the nut is a small piece, it may be prone to being misplaced. Also, the window operator can be stuck in place, after removing the bolts you can gently tap the operator to make it loose.

Make sure you have the correct window operator link length before starting this guide.



TOOLS:

- [Large Needle Nose Pliers](#) (1)
- [Phillips #2 Screwdriver](#) (1)
- [Flathead 4 mm Screwdriver](#) (1)
- [Metal Spudger](#) (1)



PARTS:

- [Window Operator Link](#) (1)

Step 1 — Link



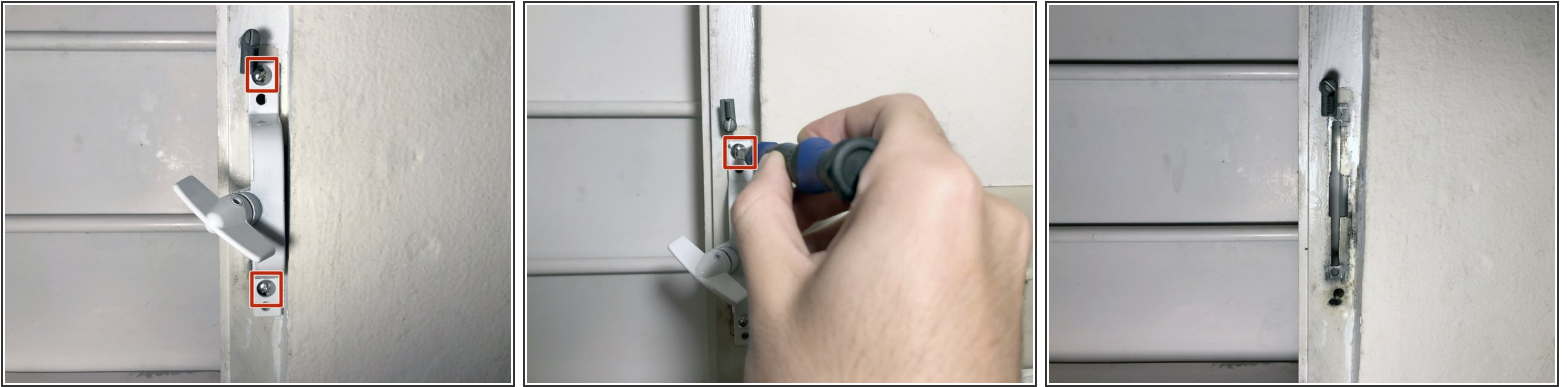
- Remove the four (4) window clips that holds the screen.
 - ⓘ *Your amount of window clips may vary depending on the size of your window.*
- Use the [Flathead 4 mm Screwdriver](#) to **loosen** the clip. The clip doesn't need to be removed.
- Remove the screen and put it aside.

Step 2



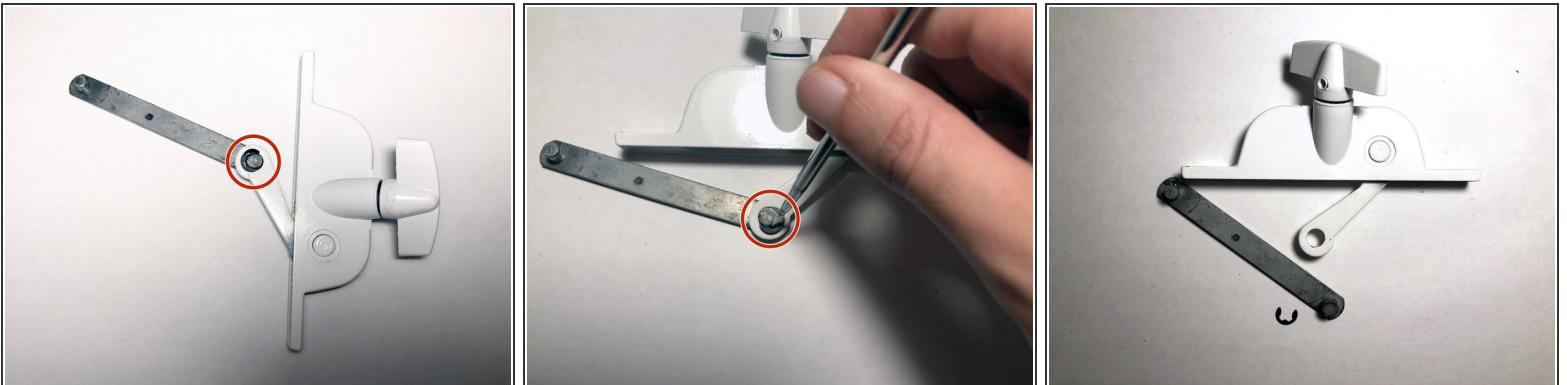
- Remove e-clip from the window link, use the [Large Needle Nose Pliers](#) to remove it.
 - ☑ If the e-clip is stuck, you can use a [Metal Spudger](#) or a [Flathead 4 mm Screwdriver](#) to force it out.

Step 3



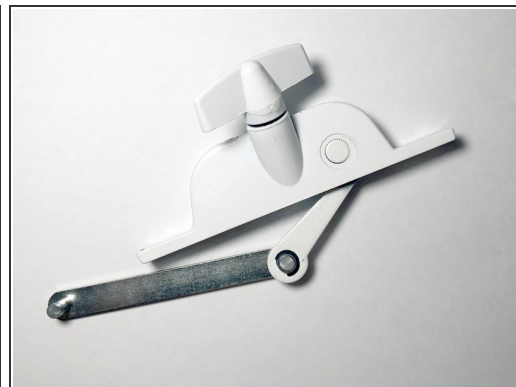
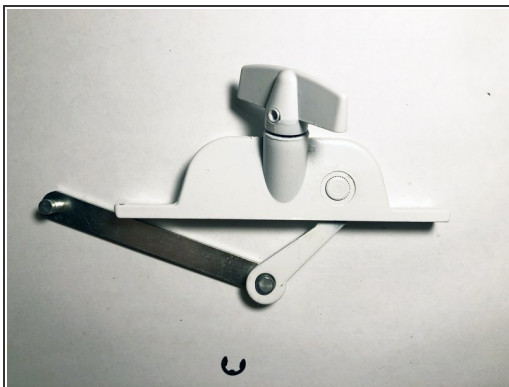
- Using the Phillips #2 Screwdriver , remove the two bolts that are holding the operator into the window frame.
- ❗ Behind the window, you will have one self retaining nut per bolt.
- ★ In some cases, you will need to play with the operator in order to take it out due to the small tolerances in the window.

Step 4



- Once the operator is removed, you can use a [Metal Spudger](#) or a [Flathead 4 mm Screwdriver](#) to force the e-clip out of the operator arm.

Step 5



- Once the warped or broken link is removed, follow the Step 4 in reverse order.
 - ☑ You may use the [Large Needle Nose Pliers](#) to force the e-clip into place.

To reassemble your device, follow from step three (3) to one (1) in reverse order.