



How to Reattach the Cap on an iFixit Precision Bit Driver

How to reattach the blue cap on an iFixit Precision Bit Driver.

Written By: Kyle Smith



INTRODUCTION

Follow this guide to reattach the blue cap on an iFixit Precision Bit Driver. You may need to do this repair if the cap has fallen out of the bit driver.

You can always [contact our customer service team](#) if you would like to replace your broken Precision Bit Driver.



TOOLS:

- [Waxed Dental Floss](#) (1)
- [iFixit 6 Inch Metal Ruler](#) (1)
- [Nitrile Gloves](#) (1)

Optional

- [Safety Glasses](#) (1)

Optional

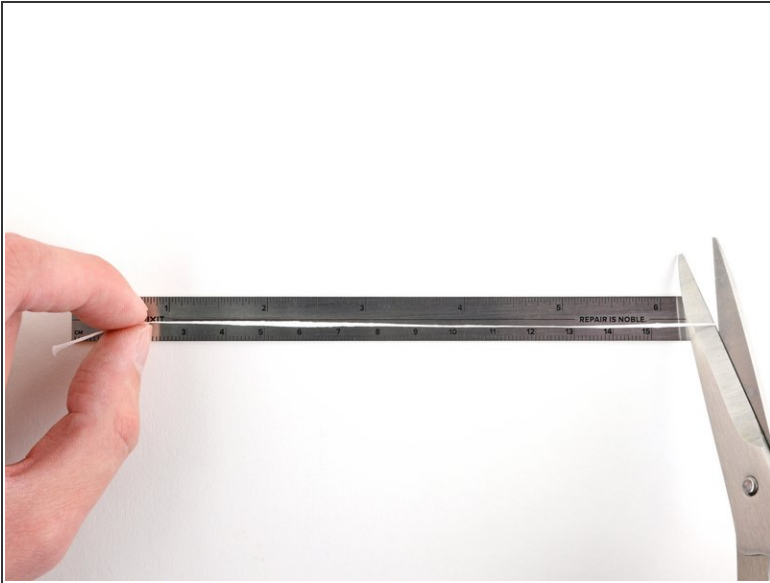
- [Coffee Filters or a lint-free cloth](#) (1)

Optional

- [Loctite Threadlocker Blue 242](#) (1)

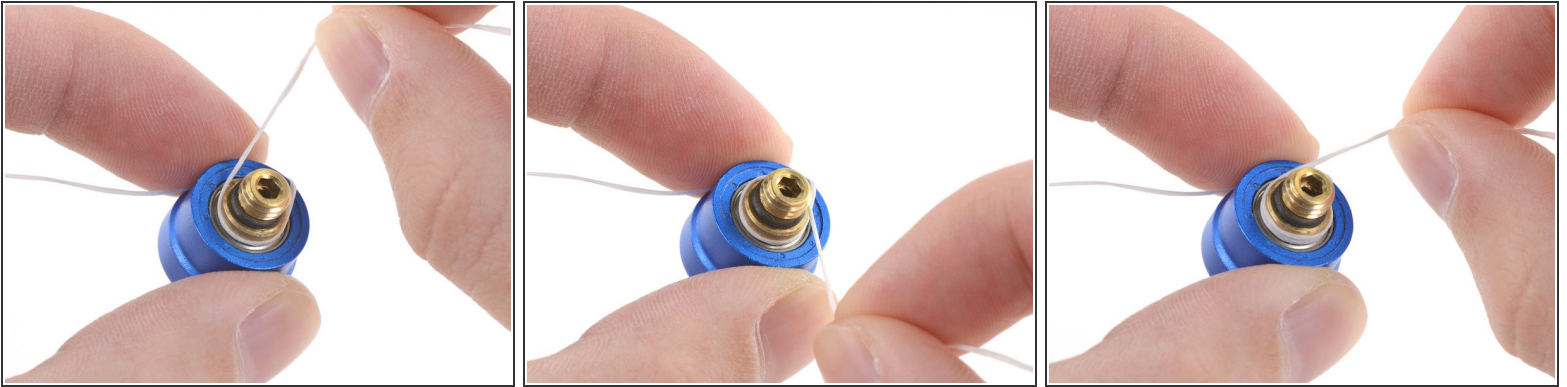
Optional

Step 1 — Cut a piece of floss



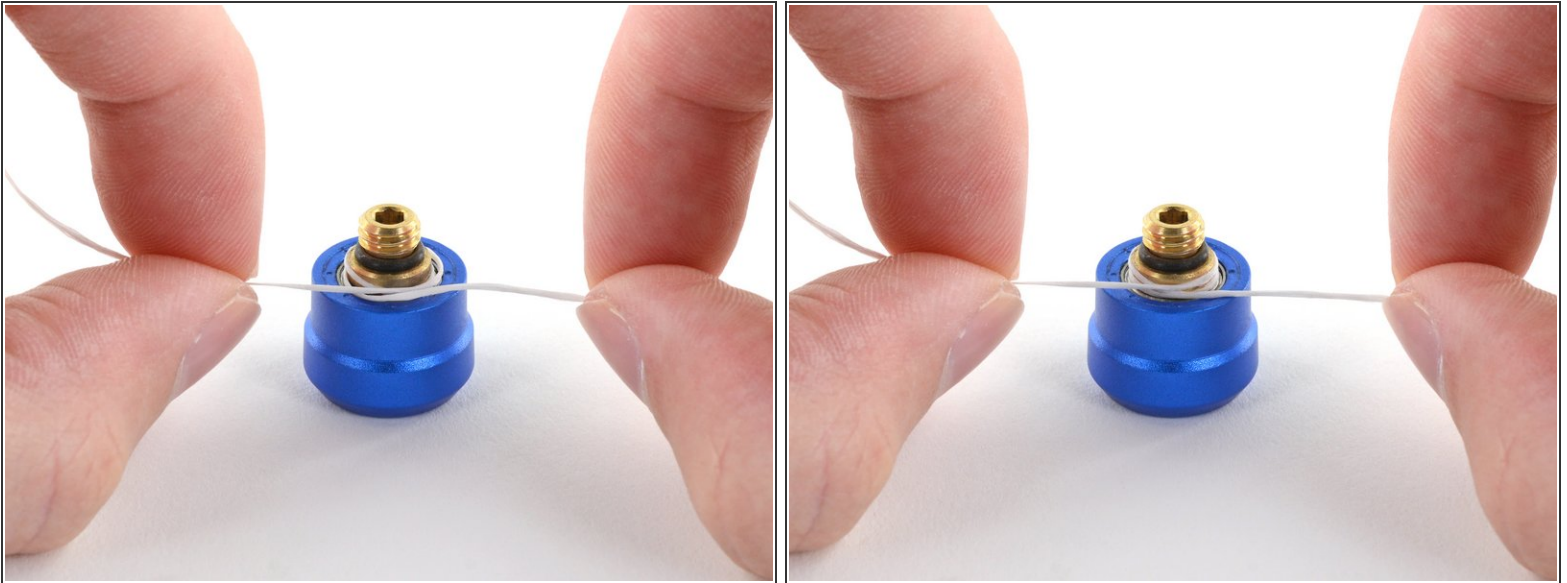
- Cut an approximately six-inch piece of waxed dental floss.

Step 2 — Wrap the floss around the post



- ❗ The blue cap is secured to the bit driver by a threaded post that screws into the bit driver's upper body.
- ❗ The threaded post can't be screwed into the upper body by twisting the cap because the cap spins freely around the post. Instead, you'll need to hold the post still so the upper body can be screwed on.
- Hold one end of the floss against the side of the cap.
- Wrap the middle of the floss twice around the widest part of the post (below the rubber o-ring).
- ❗ Don't tie the floss into a knot as this will prevent you from removing the floss after the upper body has been screwed on to the threaded post.

Step 3 — Tighten the floss



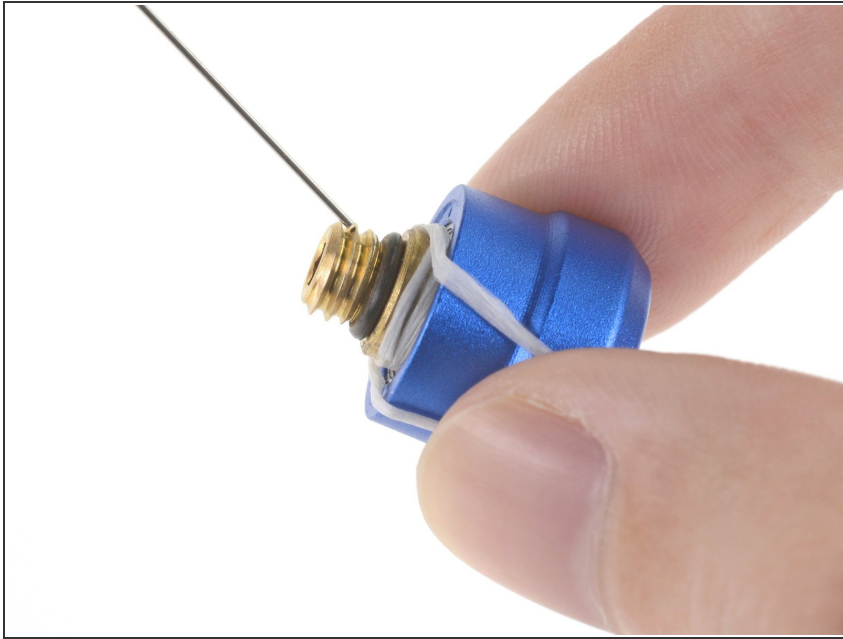
- Pull the two ends of the floss tight to create a secure hold on the post.

Step 4 — Arrange and hold the ends of the floss



- Arrange the ends of the floss so that they hang down over the edge of the cap on the opposite side that they crossed on the post.
- Press the ends of the floss against the side of the cap to prevent the post from spinning.

Step 5 — Optional threadlocker information



i You can optionally apply a threadlocker (such as Loctite Threadlocker Blue 242) to secure the threaded post to the upper body.

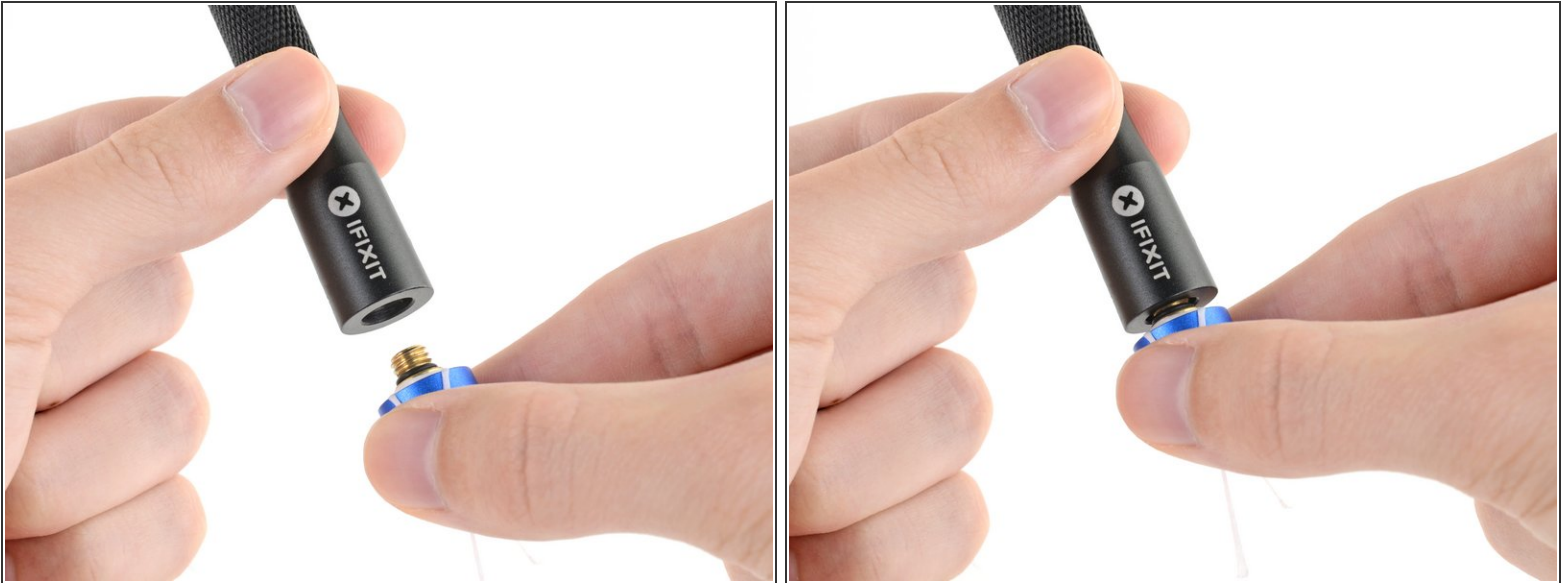
⚠ Put on your protective gloves and safety glasses while applying the threadlocker.

- Clean the threaded post and the upper body's screw hole with a lint-free cloth.
- Apply one to two drops of threadlocker to the threaded post.

⚠ Make sure you don't get threadlocker on any other part of the cap. Doing so may prevent the cap from spinning. You only need to apply enough for an even spread on the threaded post.

- After screwing the upper body on to the threaded post, wait for the recommended cure time before using the bit driver.

Step 6 — Screw the upper body on to the post



- Insert the threaded post into the upper body's screw hole.

Step 7



- Screw the upper body of the bit driver clockwise on to the threaded post until it is finger-tight.
 - ⓘ The ends of the floss will rotate clockwise when the upper body is almost fully screwed on. Continue to screw the upper body for about half a turn after this occurs to screw it on completely.

Step 8 — Remove the floss



- Pull and rotate one end of the floss around the post twice in the opposite direction that it was wrapped.

Step 9



- Pull and remove the floss from the bit driver.
- ⓘ If the floss is difficult to remove, try pulling on the other end. You can hold the gap between the cap and the bit driver at eye level to see if the floss is still looped around the post.

Repair didn't go as planned? Ask our [iFixit Precision Bit Driver Answers community](#) for help.