



Samsung Galaxy Buds Plus Battery Replacement

How to replace a worn-out or dead battery in your Galaxy Buds+.

Written By: Adriana Zwink



INTRODUCTION

Use this guide to replace a worn-out or dead battery in your Galaxy Buds+. The photos for this guide were taken with the left earbud, but the procedure is the same for both earbuds.

Galaxy Buds+ are rated IPX2 for ingress-resistance, meaning they are splash resistant. After this repair, they may lose their water protection.



TOOLS:

- [iFixit Opening Tool](#) (1)
- [Large Needle Nose Pliers](#) (1)
- [ESD Safe Tweezers Blunt Nose](#) (1)




PARTS:

- [Galaxy Buds Batteries](#) (1)

Step 1 — Remove the eartip



 If possible, discharge your Galaxy Buds+ before replacing the battery.

- Use your fingers to remove the silicone eartip by pulling it upwards while slipping it off the earbud.

Step 2 — Remove the earbud's rubber wingtip



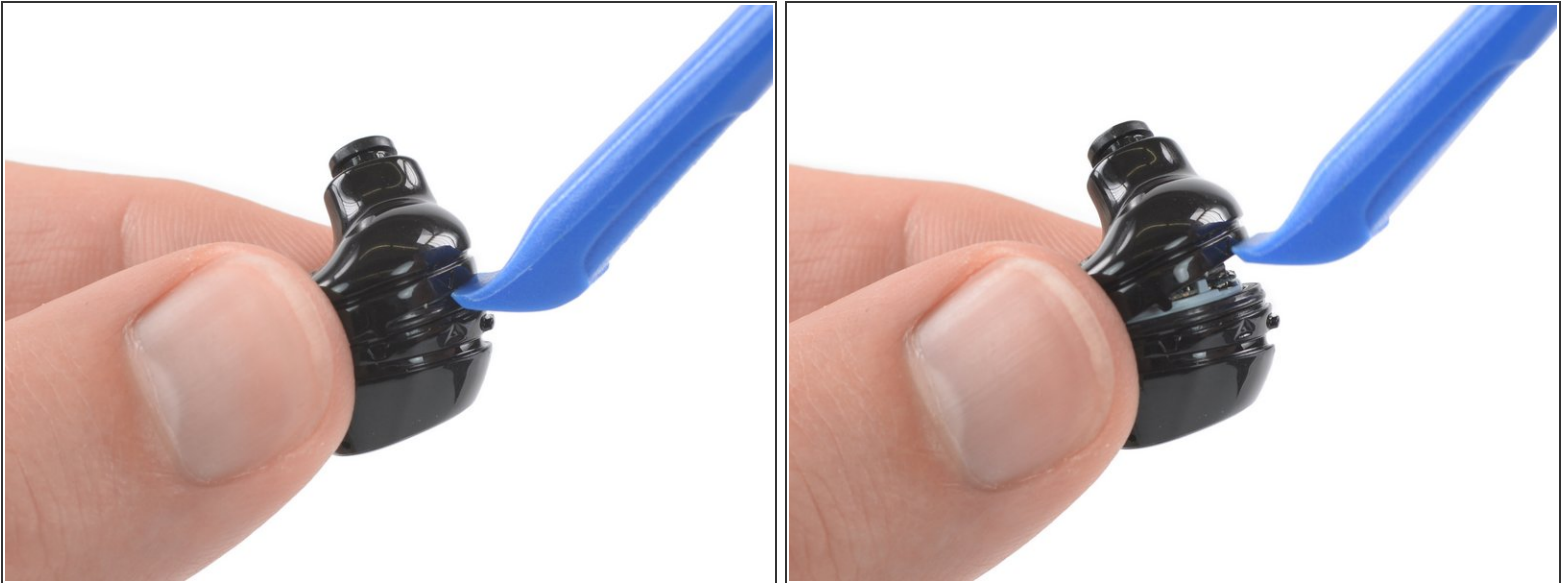
- Use your fingers or a pair blunt nose tweezers to remove the earbud's rubber wingtip by pulling it upwards while slipping it off the earbud.

Step 3 — Create a gap



- Use a pair of pliers to hold the earbud horizontally along the seam between the upper and lower halves of the case.
 - ⓘ To protect the earbud from scratches, tape the surface of the pliers or place a cloth between the pincers.
- Apply steady, even pressure to either side of the earbud along the main housing seam to create a gap.

Step 4 — Insert an opening tool



- Insert an opening tool into the gap between the two cases of the earbud.
- Use the opening tool to pry the two cases apart.
- ⓘ You may need to work your way around the entire earbud with the opening tool.

⚠ Don't remove the upper case yet, it's still connected to the board.

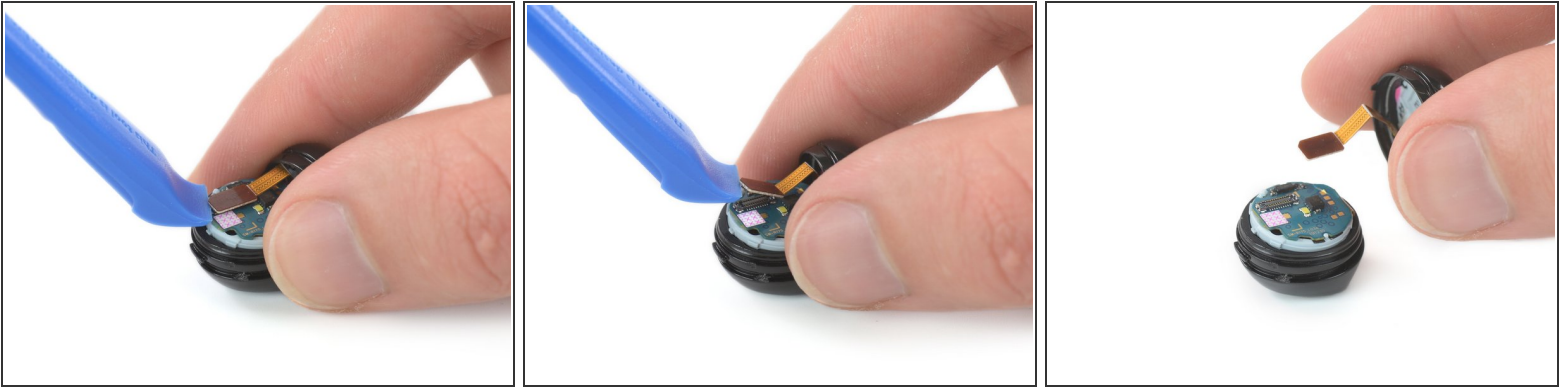
Step 5 — Access the connector



⚠ Make sure that the flex cable is not under tension during the following step.

- To remove the upper part of the earbud from the board, place it on the table to access the connector.

Step 6 — Disconnect the upper earbud case



- Use an opening tool to disconnect the upper earbud case from the board by prying the connector out of its socket.
- Remove the upper earbud case.

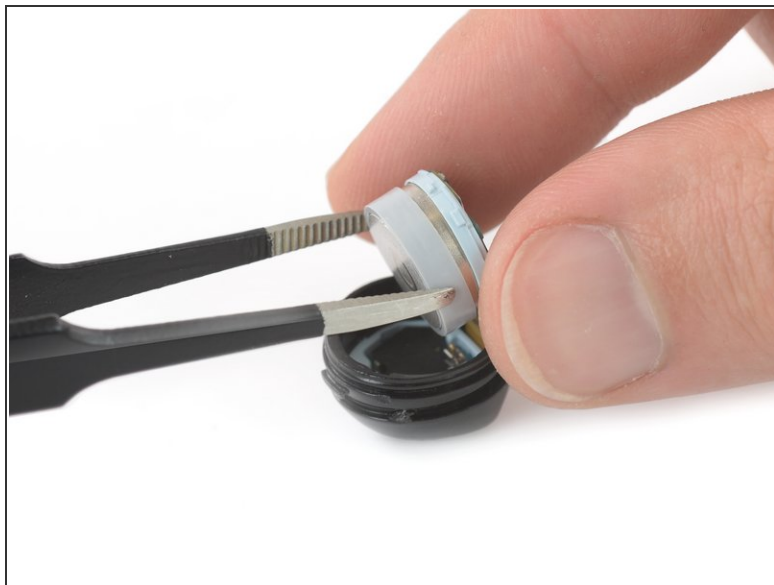
Step 7 — Lift the core assembly



- Place an opening tool under one of the small lips of the core assembly.
- Slightly lift the core assembly—including the motherboard—out of the buds case to access the battery.

⚠ Don't remove the core assembly completely—it's still attached to the case by a ribbon cable.

Step 8 — Remove the battery housing

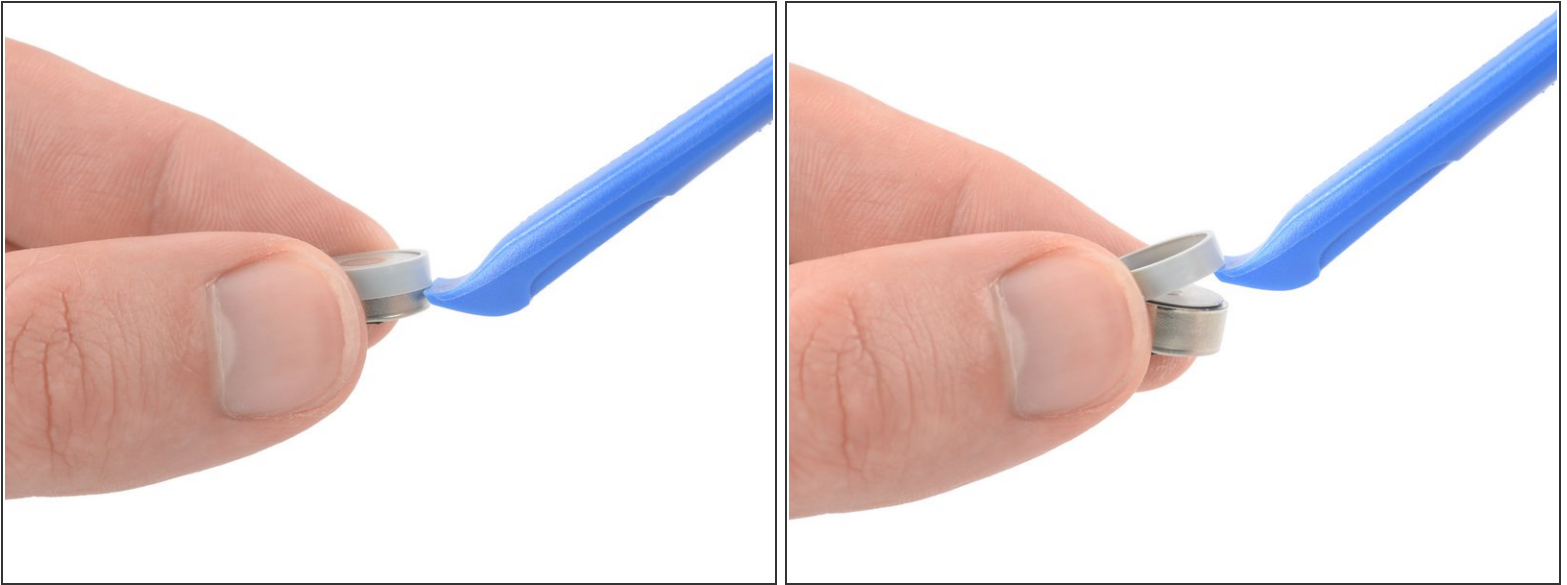


 The battery is housed in the plastic case.

- Use a pair of blunt nose tweezers to remove the battery housing while holding the upper part with your fingers.

 Be careful not to rip the thin motherboard flex cable.

Step 9 — Remove the battery



- Use an opening tool to separate the housing from the battery.
- Remove the battery.

To reassemble your device, follow these instructions in reverse order. Apply new adhesive where necessary after cleaning the relevant areas with isopropyl alcohol (>90%).

For optimal performance, **calibrate your newly installed battery**: Charge it to 100% and keep charging it for at least 2 more hours. Then use your device until it shuts off due to low battery. Finally, charge it uninterrupted to 100%.

Take your e-waste to an [R2 or e-Stewards certified recycler](#).

Repair didn't go as planned? Try some [basic troubleshooting](#), or ask our [Answers community](#) for help.