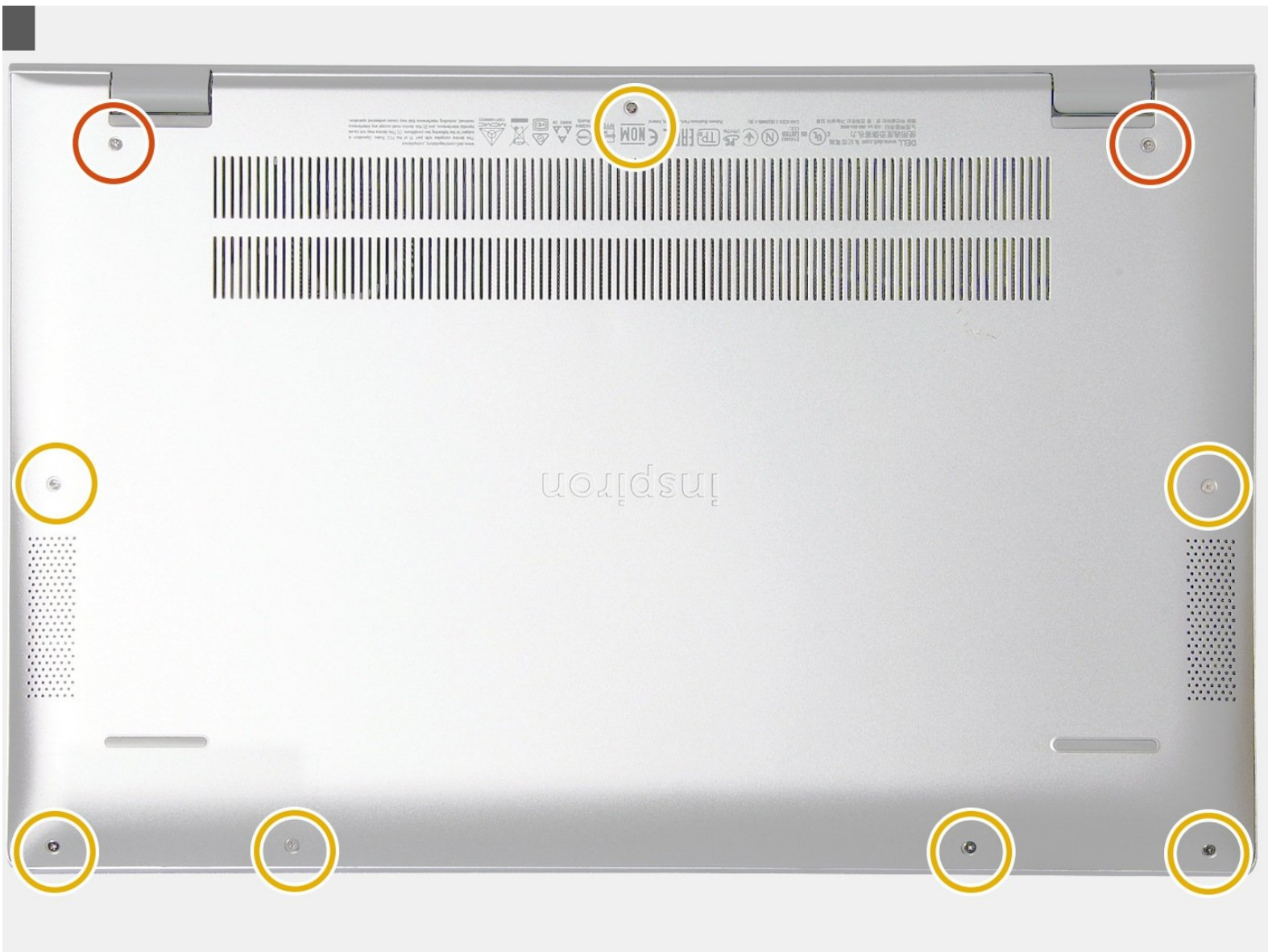




Dell Inspiron 15 5502 Case Removal

This guide will teach you to remove the back case. This should be done before most repairs of the 5502.

Written By: Kind-hearted, spirited Man



INTRODUCTION

This guide will teach you to remove the back case.

This should be done before most repairs of the 5502.

TOOLS:

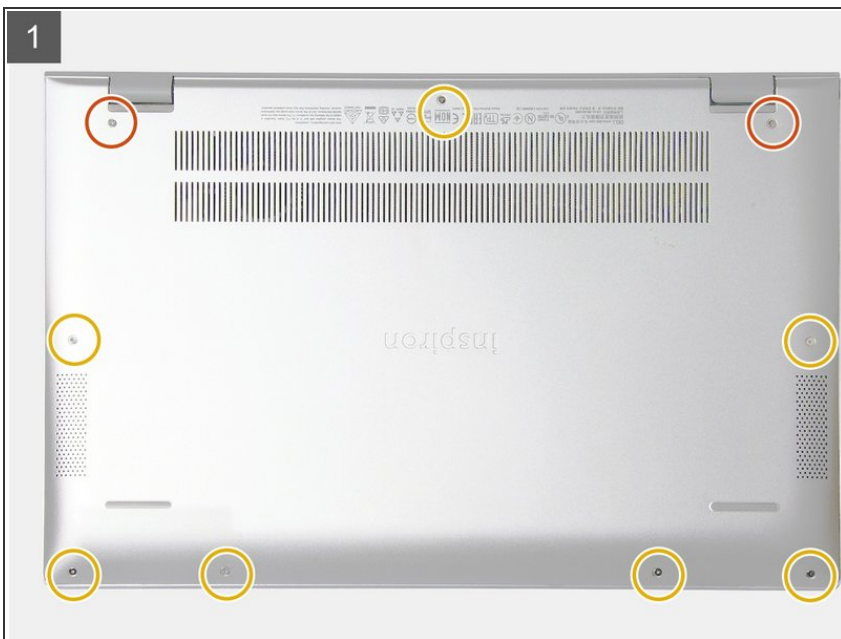
- [Small plastic scribe](#) (1)
 - [Phillips #0 Screwdriver](#) (1)
 - [Phillips #1 Screwdriver](#) (1)
-

Step 1 — Before working inside Dell inspiron 15 5502



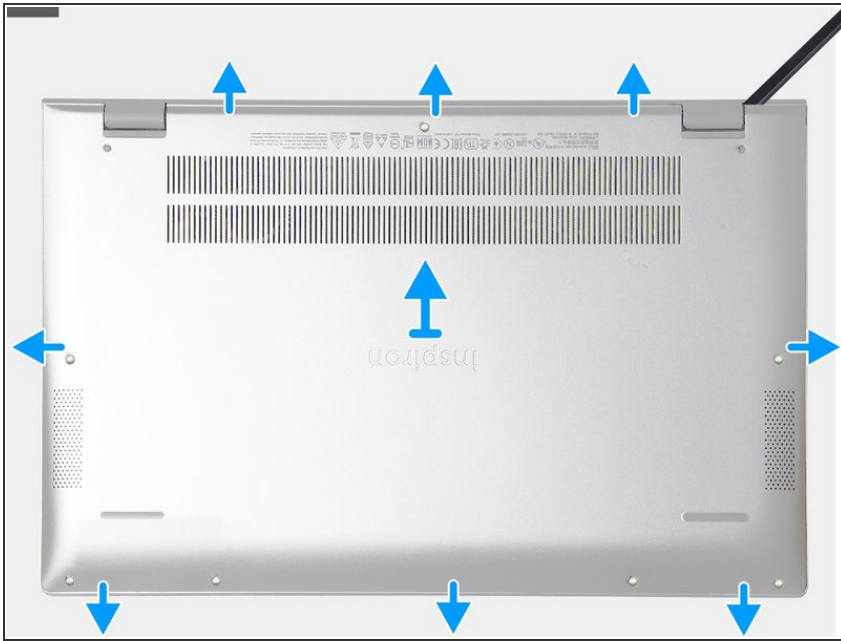
- Save and close all open files and exit all open applications.
- Shut down your computer. Click Start > Shut down.
- Disconnect your computer and all attached devices from their electrical outlets.
- Disconnect all attached network devices and peripherals, such as keyboard, mouse, and monitor from your computer.

Step 2 — Screws



- In the back there are 9 screws.
- (captive) M2x7.5
- M2x4
- Unscrew these and store in a safe place. (eg: nescafe cup, container)

Step 3 — Getting the base cover out



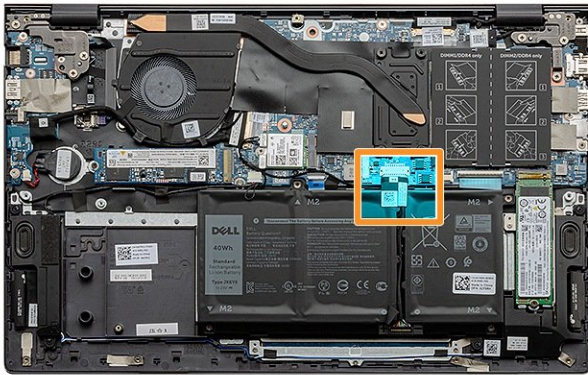
- Using a plastic scribe, pry the base cover starting from the recess at the display hinge and work your way around the sides to remove the base cover.

Step 4 — Lifting



- Lift the base cover off the palm-rest and keyboard assembly.

Step 5 — Battery disconnecting



- The sticker and the cable connector(below the sticker)
- Peel the tape and disconnect the battery cable from the system board.

Step 6 — Drain the power



- Press and hold the power button for five seconds to ground the computer and drain the flea power.

To reassemble your device, follow these instructions in reverse order.

If you were following another article and was said to follow this guide, now you can go and follow it/continue in the step you stopped!