



# Google Stadia Controller Buttons Replacement

How to remove all of the front buttons of a Google Stadia controller.

Written By: Dominik Schnabelrauch



# INTRODUCTION

Use this guide to remove all or certain front buttons of your Google Stadia controller.

Although you don't need special tools to open the Google Stadia controller, the opening process is difficult and requires a lot of force. The case of the controller is held together by super tight plastic clamps which require a tool solid enough to withstand the pressure it takes to pry them open. Take your time and try not to get frustrated during the opening procedure—otherwise you're likely to scratch or otherwise damage your controller.



## TOOLS:

- [iOpener](#) (1)
- [iFixit Opening Picks \(Set of 6\)](#) (1)
- [Jimmy](#) (1)
- [TR8 Torx Security Screwdriver](#) (1)
- [Precut Adhesive Card](#) (1)
- [Pro Tech Toolkit](#) (1)

*optional*

- [ESD Safe Tweezers Blunt Nose](#) (1)
- [Spudger](#) (1)
- [T6 Torx Screwdriver](#) (1)

## Step 1 — Loosen the screw cover adhesive



- Apply a [heated iOpener](#) to the rear side of the Stadia controller where the screw cover is located to loosen the adhesive underneath. Apply the iOpener for at least two minutes.

## Step 2 — Insert an opening pick



- Insert the tip of an opening pick into the gap between the plastic screw cover and the rear case of the controller.

### Step 3 — Remove the screw cover



- Slide the opening pick along the screw cover to slice the adhesive.
  - Use a pair of tweezers or your fingers to remove the screw cover.
- ☒ You might want to replace the screw cover adhesive during reassembly. Apply a bit of high-concentration isopropyl alcohol (>90%) to a Q-tip or use a cleaning pad to gently remove the leftover adhesive on the rear cover of the controller before installing new adhesive.

### Step 4 — Unfasten the rear case screw



- Use a Torx T8 screwdriver to remove the 9.6 mm-long screw securing the rear case.



## Step 5 — Disassembly information



- The front cover assembly of the Stadia controller is held in place by various tight plastic clamps. They are very hard to open and snap back in place easily.

**⚠ The opening procedure requires some force, however, try to avoid damaging your controller case along the way.**

## Step 6 — Pry open the stadia controller



- Insert a Jimmy into the gap between the front and back cover assembly at the inside of the left controller handle.
- ⓘ To make sure you insert the Jimmy at the correct position where the clamps are located, you can use [this photo](#).
- Tilt the Jimmy upwards and push it into the gap between the covers at the same time to pry open the plastic clamp. You should hear a *clack* noise once the clamp pops open.
- ⓘ Once the clamp is completely open, the gap between the two controller covers should be about 2-3 mm wide.


## Step 7 — Insert an opening pick



- Insert an opening pick in a steep angle into the gap you created to prevent the first clamp from popping back into its closed position.

## Step 8 — Pry open the Stadia controller



 To make sure you insert the Jimmy at the correct position where the clamps are located, you can use [this photo](#).

- Insert a Jimmy into the gap between the front and back cover assembly at the outside of the left bottom end of the controller handle.
- Repeat the previous opening procedure to open the three plastic clamps at the outside of the left controller handle.

## Step 9



- Insert a Jimmy into the gap between the front and back cover assembly between the left shoulder button and the charging port at the top edge of the Stadia controller.
- Tilt the Jimmy upwards and push it into the gap between the covers at the same time to pry open the plastic clamp. You should hear a *clack* noise once the clamp pops open.
- Repeat the previous procedure at the clamp between the right shoulder button and the charging port.

## Step 10



- Insert a Jimmy into the gap between the front and back cover assembly at the right edge of the right controller handle.
- Repeat the previous opening procedure to open the three plastic clamps at the outside of the right controller handle.



## Step 11



- Insert a Jimmy into the gap between the front and back cover assembly at the inside of the right controller handle.
- Repeat the previous opening procedure to open plastic clamps at the inside of the left controller handle.

## Step 12



- Insert a Jimmy into the gap between the front and back cover assembly at the bottom edge of the Stadia controller right to the headphone jack.
- Tilt the Jimmy upwards and push it into the gap between the covers at the same time to pry open the plastic clamp.
- Repeat the previous procedure at the clamp left to the headphone jack.

**⚠ Do not try to remove the front cover assembly all the way yet. It's still connected to the rear cover assembly.**

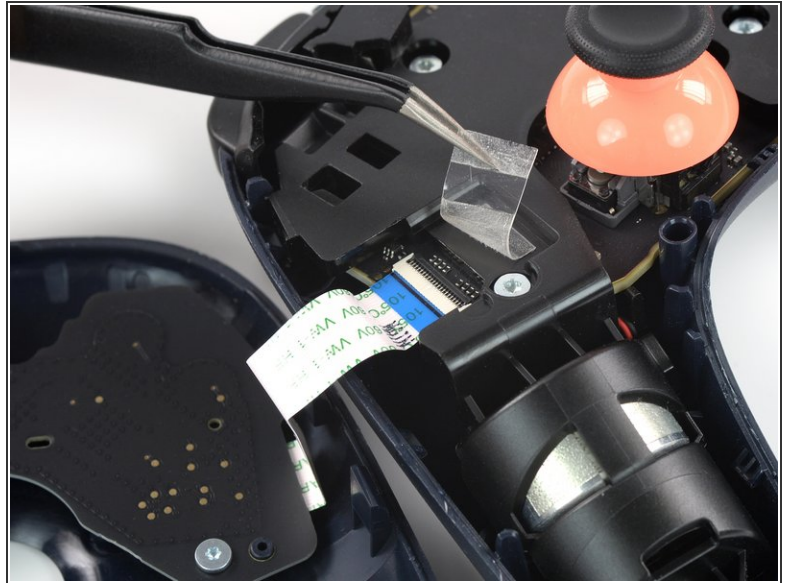
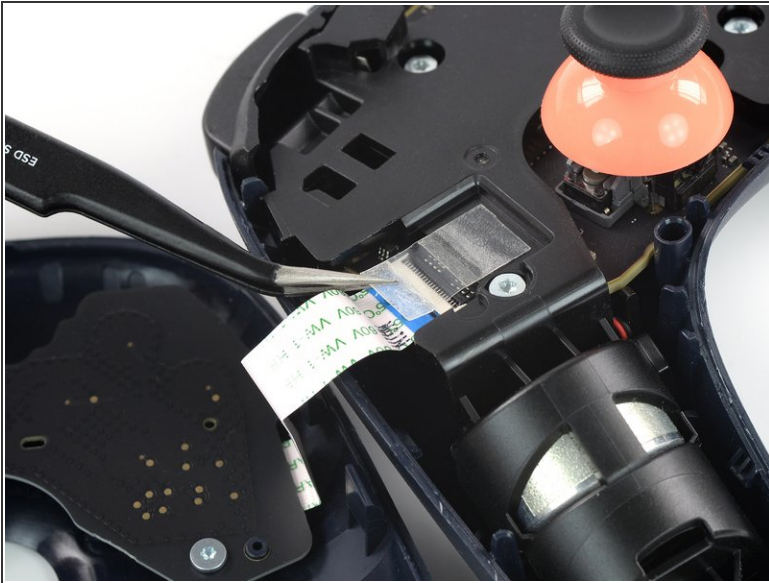
## Step 13 — Unfold the front cover assembly



**⚠ Avoid straining the front cover assembly cable during this step.**

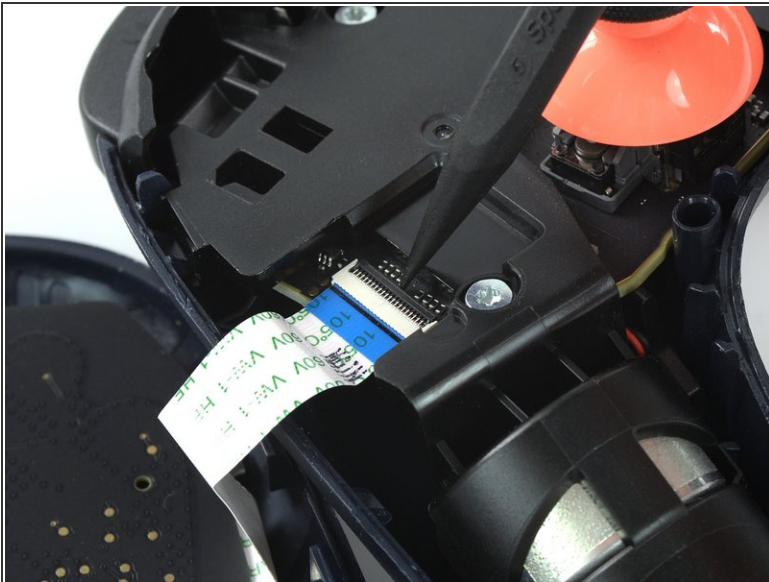
- Carefully lift the front cover assembly and fold it to the left side of the Google Stadia controller.

## Step 14 — Remove the adhesive tape



- Use a pair of tweezers to peel the clear protective tape off the ZIF connector on the left side of the rear case.

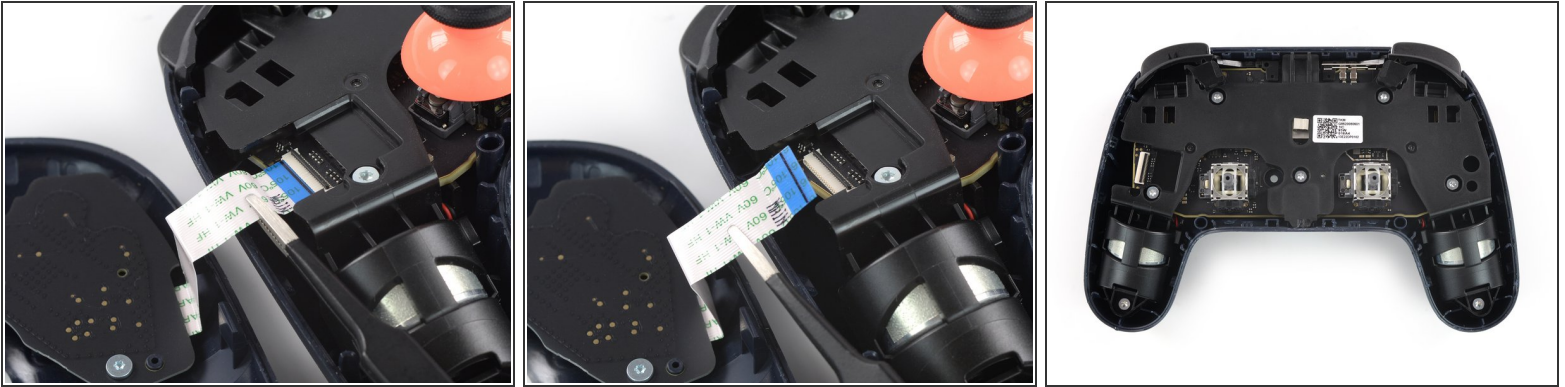
## Step 15 — Open the ZIF connector



- Use the pointed end of a spudger to open the [ZIF connector](#) holding the button contact board cable in place.



## Step 16 — Disconnect the flex cable



- Use a pair of tweezers to carefully disconnect the flex cable of the button unit by pulling it out of the ZIF connector in a flat angle.
  - Separate the front from the rear assembly.
- ☒ Remove the thumbsticks by pulling them straight upwards for an easier handling in case you want to do further disassembly.

## Step 17 — Unfasten the screws



- Use a Torx T6 screwdriver to remove the three 6.2 mm-long screws securing the front button contact board.



## Step 18 — Remove the front button contact board



- Remove the front button contact board.
- i** In the followings steps, all of the Stadia controller's front buttons will be removed. In case you only want to replace a specific button, jump to one of the following steps:
- [A, B, X and Y buttons](#)
  - [Menu and capture button](#)
  - [Stadia button](#)
  - [Google Assistant and option button](#)
  - [Direction pad](#)

## Step 19 — Remove the rubber gasket



- Use a pair of tweezers or your fingers to remove the rubber gasket on the A, B, X and Y buttons.

## Step 20 — Remove the buttons



- Use a pair of tweezers to remove the A, B, X and Y buttons.
- ⓘ Since the buttons are equipped with little plastic nibs for orientation, there isn't a risk of inserting them in the wrong position during reassembly.

## Step 21 — Remove the rubber gasket



- Use a pair of tweezers or your fingers to remove the rubber gasket on the menu and the capture button.

## Step 22 — Remove the buttons



- Use a pair of tweezers to remove the menu and capture button.



## Step 23 — Remove the rubber gasket



- Use a pair of tweezers or your fingers to remove the rubber gasket on the Stadia button.

## Step 24 — Remove the button



- Use a pair of tweezers to remove the Stadia button.



## Step 25 — Remove the rubber gasket



- Use a pair of tweezers or your fingers to remove the rubber gasket on the Google assistant and option button.

## Step 26 — Remove the buttons



- Use a pair of tweezers to remove the Google assistant and option button.

## Step 27 — Remove the direction pad



- Use a pair of tweezers or your fingers to remove the direction pad.

**To reassemble your device, follow these instructions in reverse order.**

Take your e-waste to an [R2 or e-Stewards certified recycler](#).

Repair didn't go as planned? Check out our [Answers community](#) for troubleshooting help.