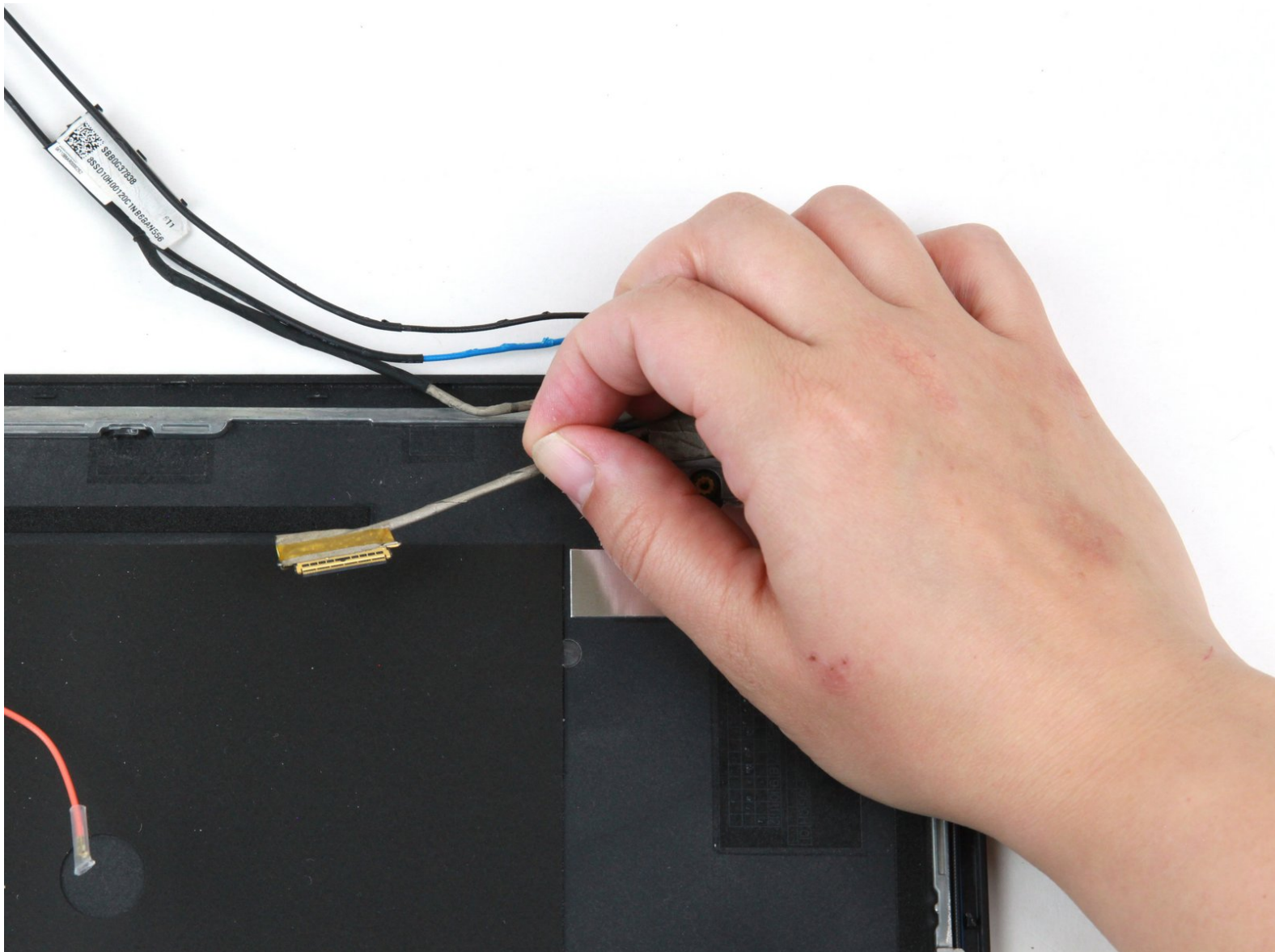




Lenovo ThinkPad T460 LCD Cable Replacement

How to replace the LCD cable in your Lenovo ThinkPad T460 laptop.

Written By: Kristen Gismondi



INTRODUCTION

Use this guide to replace the LCD cable in your Lenovo ThinkPad T460 laptop.

Some signs your LCD cable may be faulty include a blank, black, or flickering screen, no backlight, or horizontal or vertical lines. These symptoms may also indicate that the [LCD panel](#) is faulty, rather than the cable itself.

Before attempting a display panel replacement, you may be able to resolve the issue using Lenovo's [troubleshooting guide](#).

Make sure to [disable the internal battery](#), power down your device, and disconnect from any external power sources before you begin.



TOOLS:

- [Spudger](#) (1)
 - [Phillips #1 Screwdriver](#) (1)
 - [ESD Safe Tweezers Blunt Nose](#) (1)
-

Step 1 — External Battery



⚠ Before you begin this guide, make sure to [disable the internal battery](#), power down your device, and disconnect from any external power sources.

- Place the laptop so that the bottom is facing upwards.
- Slide the latch on the left side of the battery to the left until it clicks in place.

Step 2



- Slide the latch on the right side of the battery to the right and hold it in place with your thumb.
- Use your other hand to slide the battery towards the back of the laptop.
- Lift the battery up and away from the laptop.

Step 3 — Bottom Cover



- Loosen the eight captive screws in the bottom cover using a Phillips #1 screwdriver.

Step 4





- Insert the flat end of a spudger in between the bottom cover and the rest of the laptop, starting in the lower left corner.
 - Pry the lower left corner of the bottom cover up by a few millimeters.
 - Slide the spudger along the bottom of the laptop to release the clips until you reach the lower right corner.
- i** You may hear some snapping noises as the clips are released.

Step 5



- Slide the spudger along the right and top sides of the bottom cover to release the clips.

 You may hear some snapping noises as the clips are released.

 **Potential for device damage:** If the clips do not release easily, check to ensure that the captive screws are fully loosened. Forcing the clips to detach can crack the bottom cover.

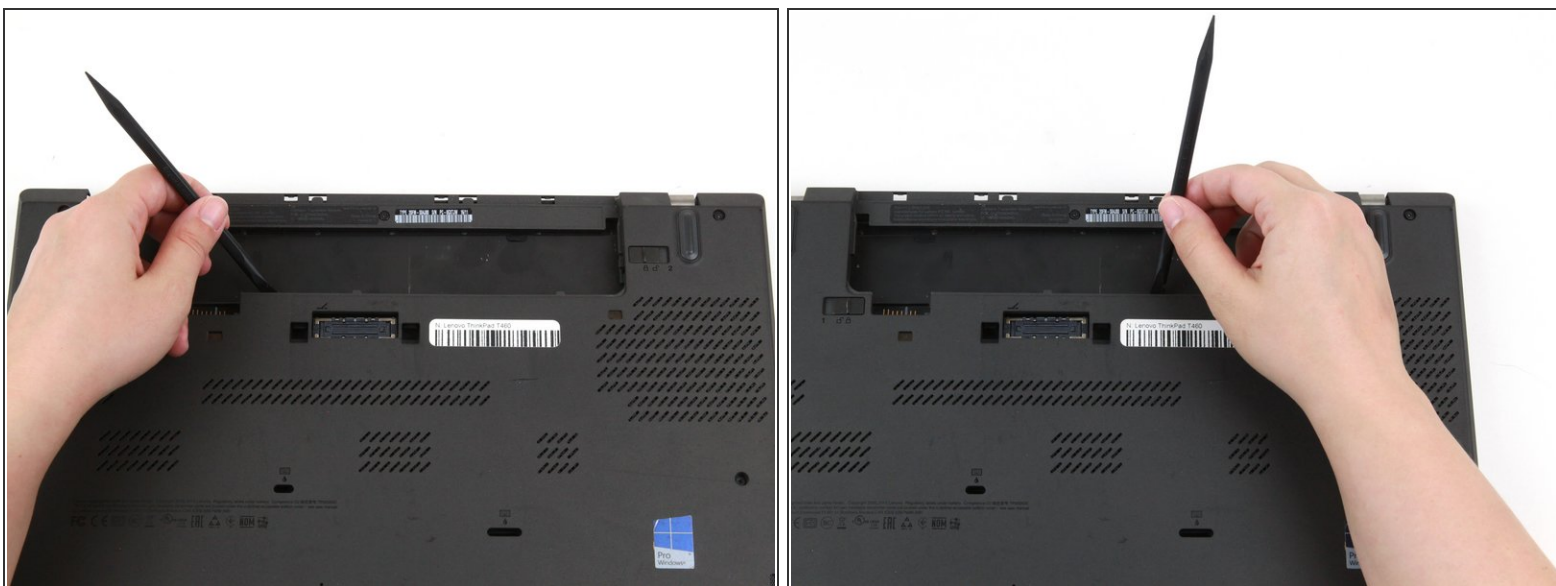
Step 6



- Use the spudger to pry the upper left corner up by a few millimeters.
- Pry up the sections of the bottom cover with printed logos of the ports.

⚠ Potential for device damage: Prying inside the ports themselves can damage your laptop. Be sure to only pry up on the sections of the cover that extend past the ports.

Step 7



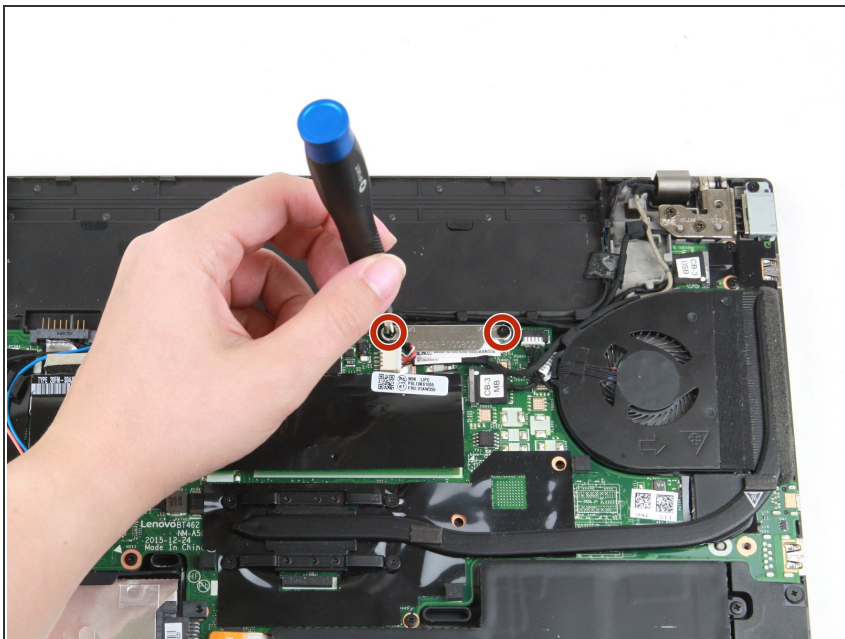
- Use the spudger to pry up the bottom cover in the lower portion of the external battery compartment by a few millimeters.

Step 8



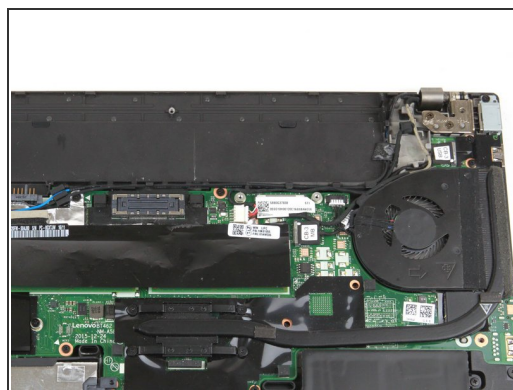
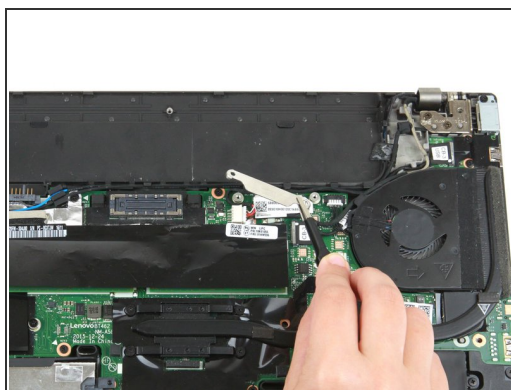
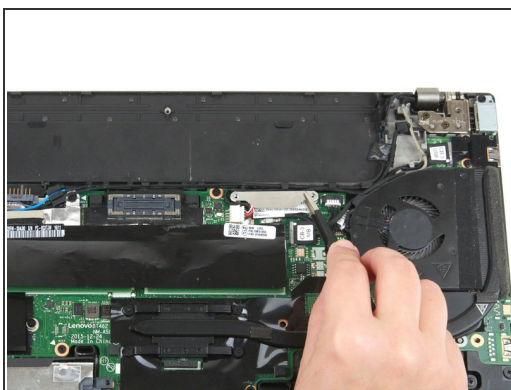
- Use both hands to lift the bottom cover up and away from the laptop.

Step 9 — LCD Assembly



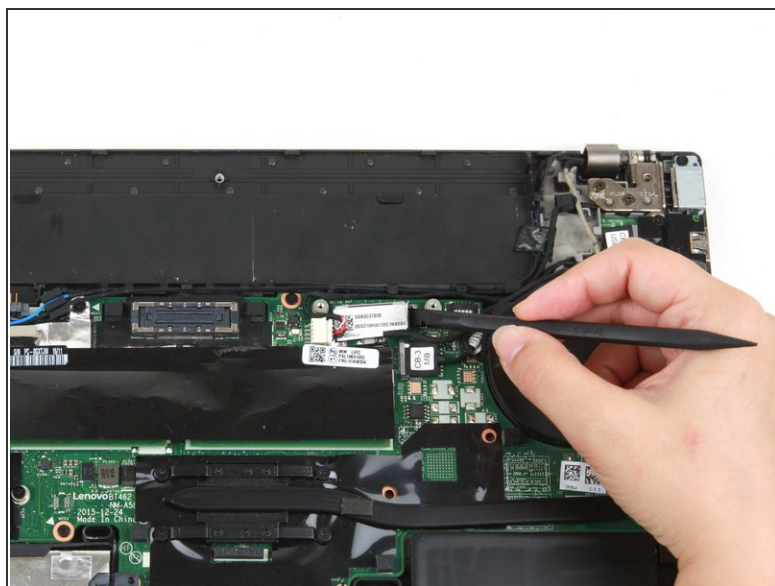
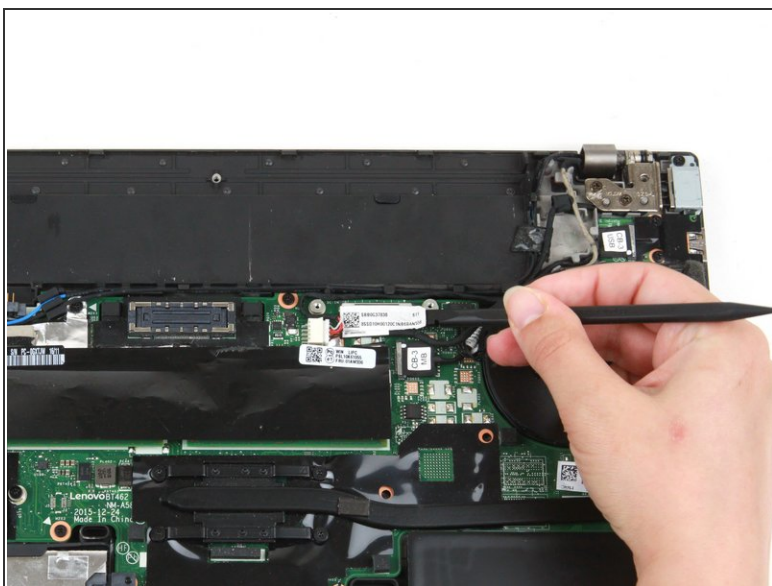
- Remove the two 3.7 mm screws from the LCD cable bracket using a Phillips #1 screwdriver.

Step 10



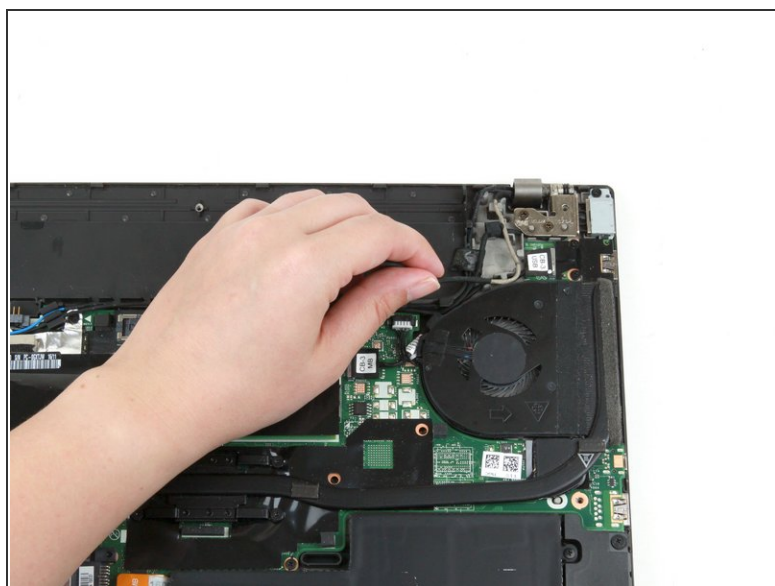
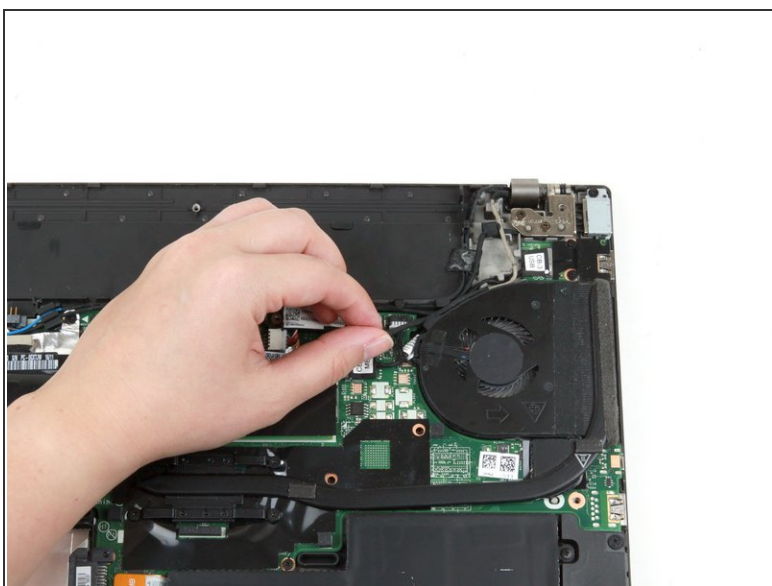
- Use a pair of tweezers to lift the LCD cable bracket away from the motherboard.

Step 11



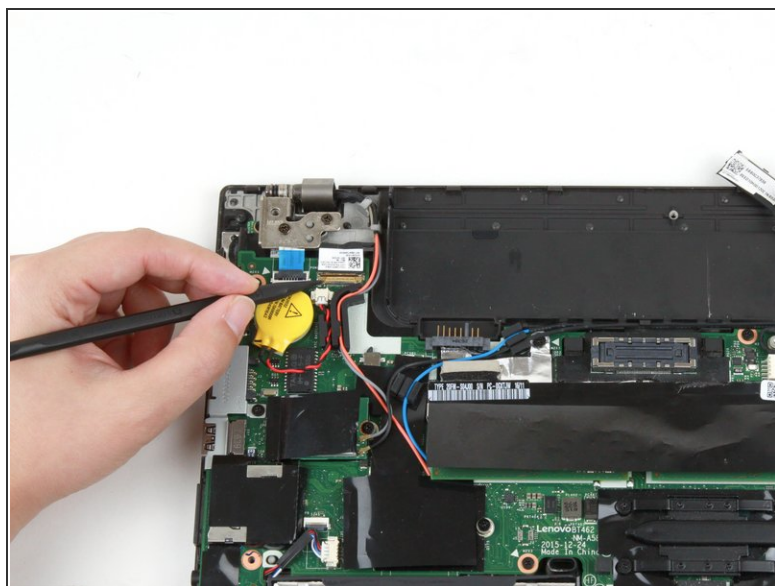
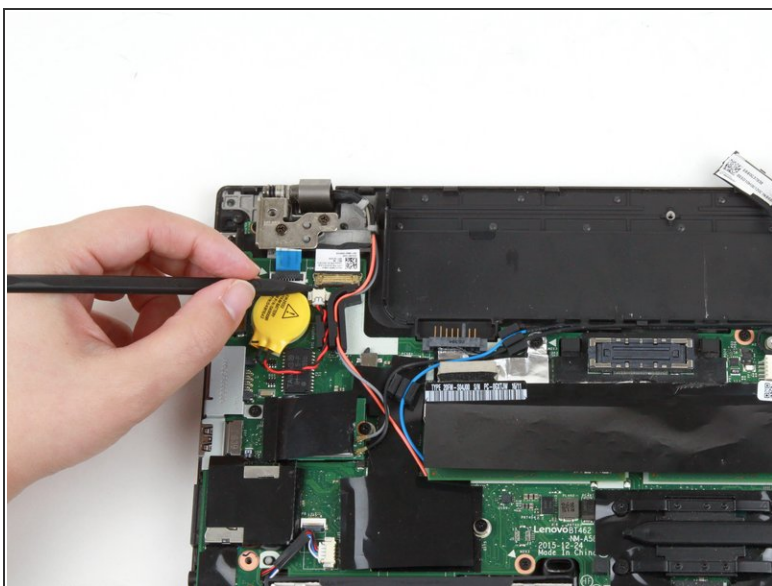
- Use the flat end of a spudger to disconnect the [flat-topped](#) LCD cable connector.

Step 12



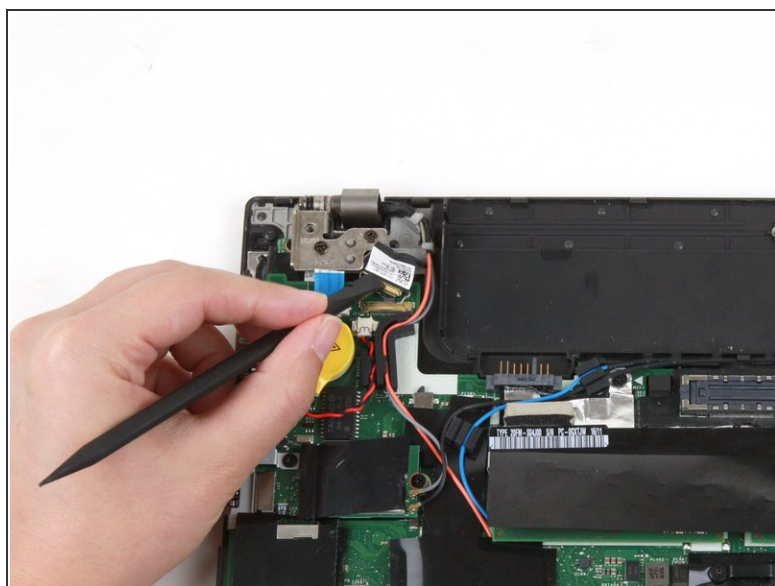
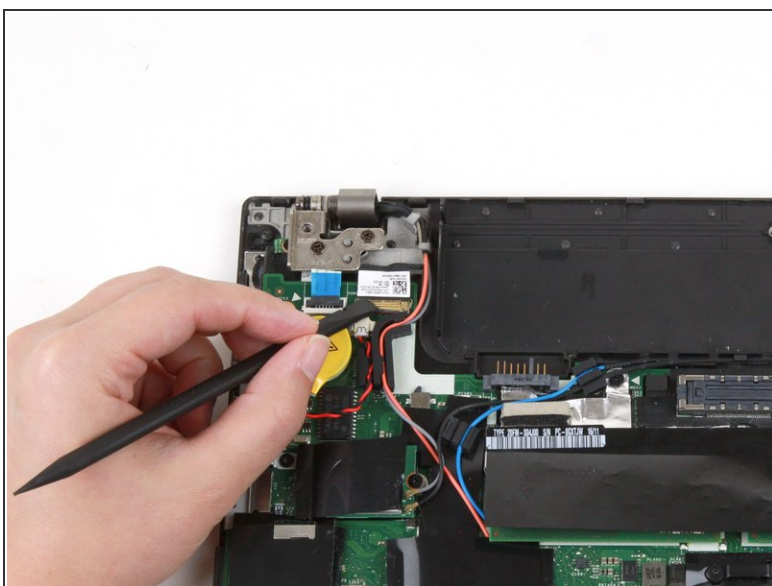
- Use your fingers to remove the cable from its slots.

Step 13



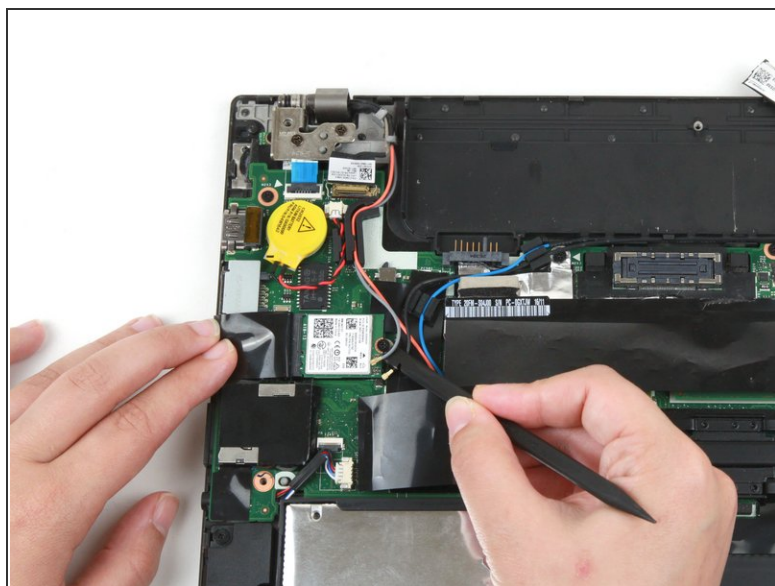
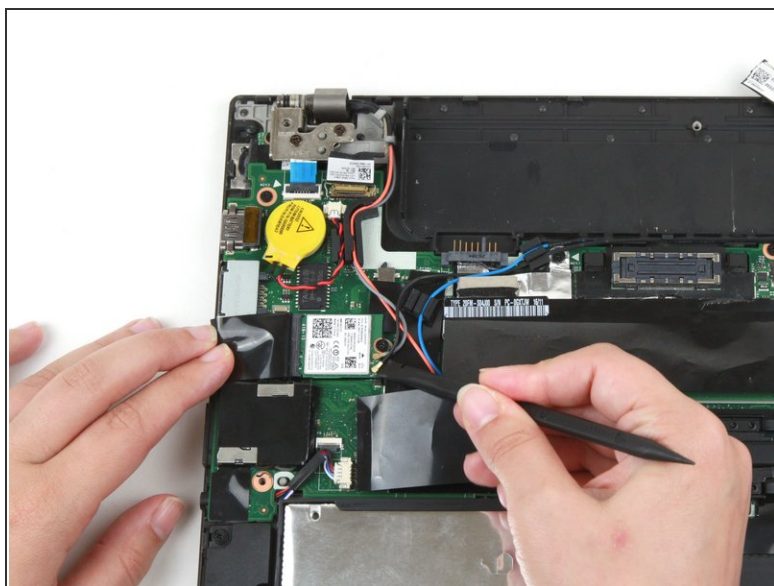
- Use the pointed end of a spudger to lift up the metal clip on the camera/microphone cable.

Step 14



- Use the flat end of a spudger to detach the camera/microphone cable connector from its socket.

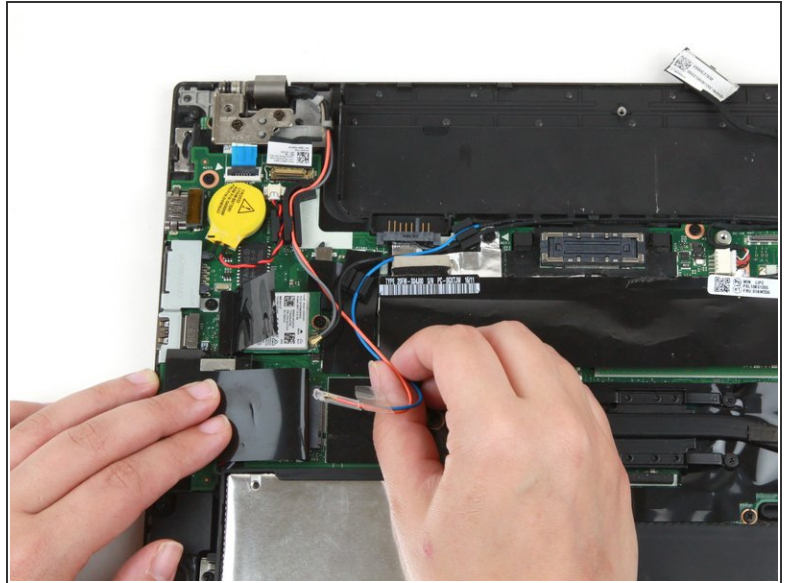
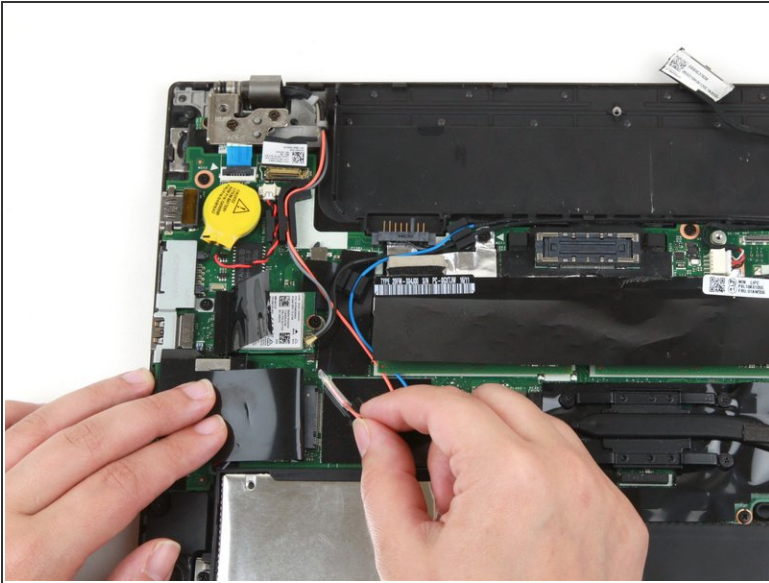
Step 15



- Use the flat end of a spudger to disconnect the black and gray coaxial cables from the Wi-Fi card.

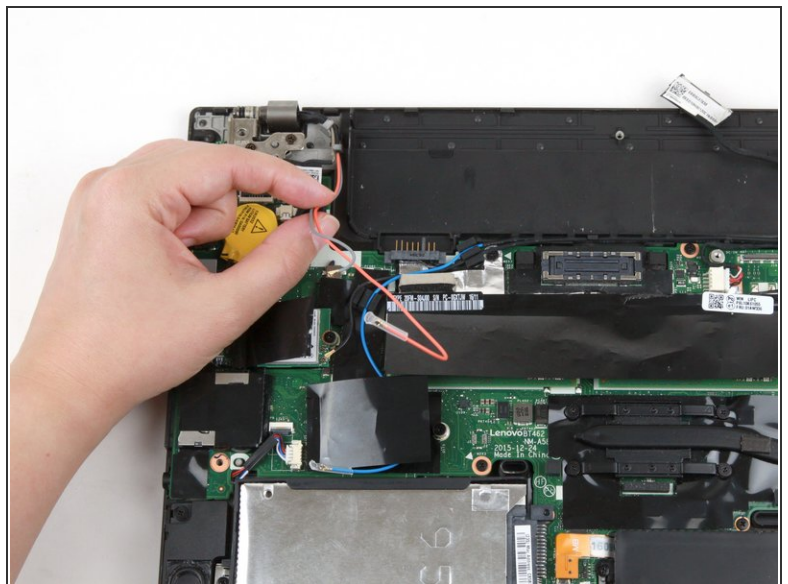
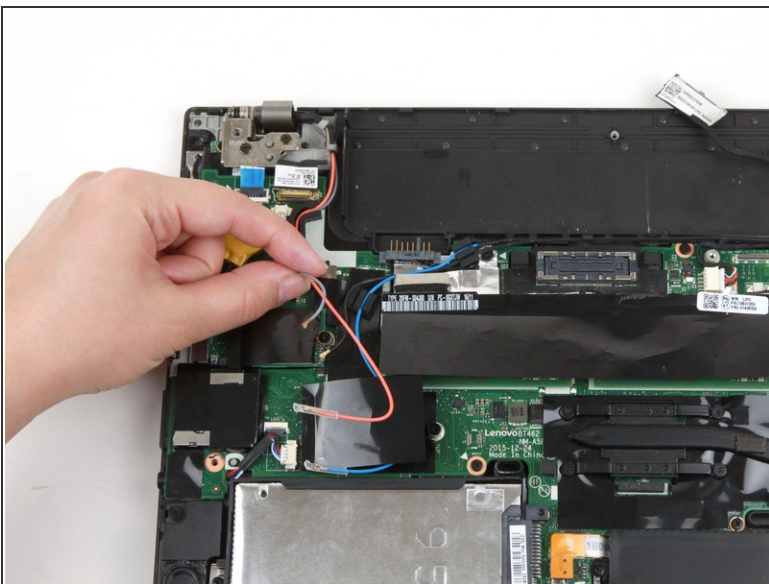
☑ When reassembling, reattach the gray wire on the top and the black wire on the bottom.

Step 16



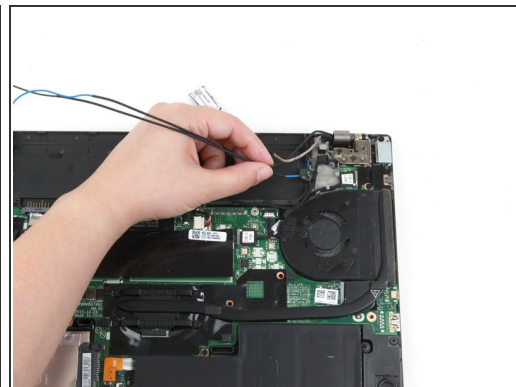
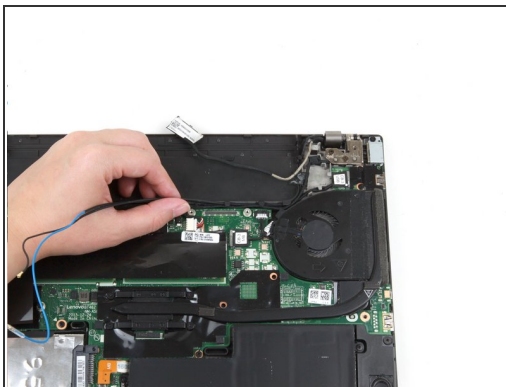
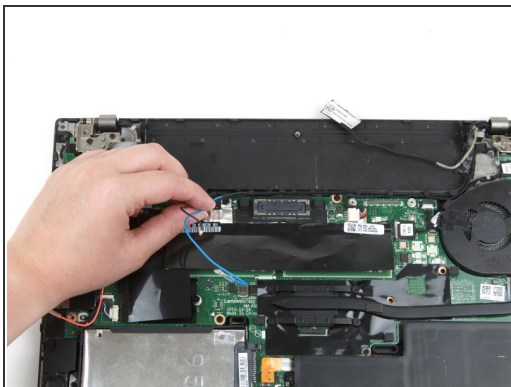
- If your laptop has a WWAN card, disconnect the red and blue coaxial cables using the flat end of a spudger.
- If your laptop does not have a WWAN card, remove the tape holding the red and blue coaxial cables in place.

Step 17



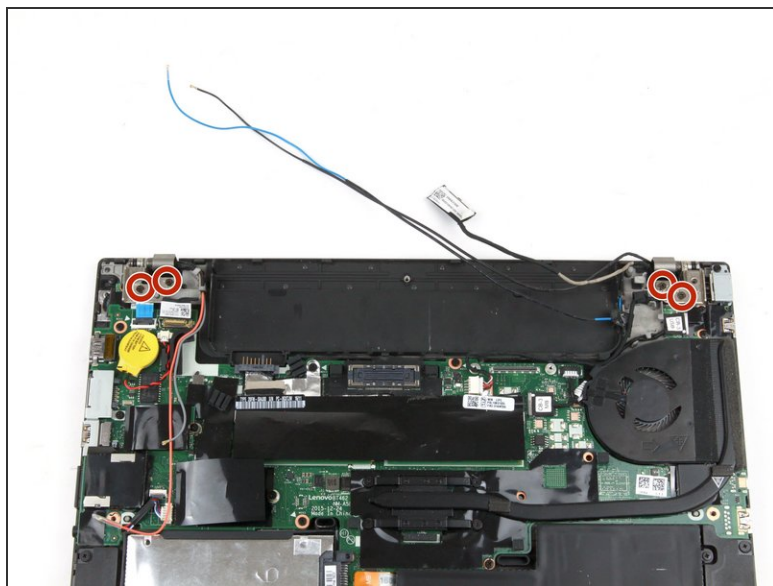
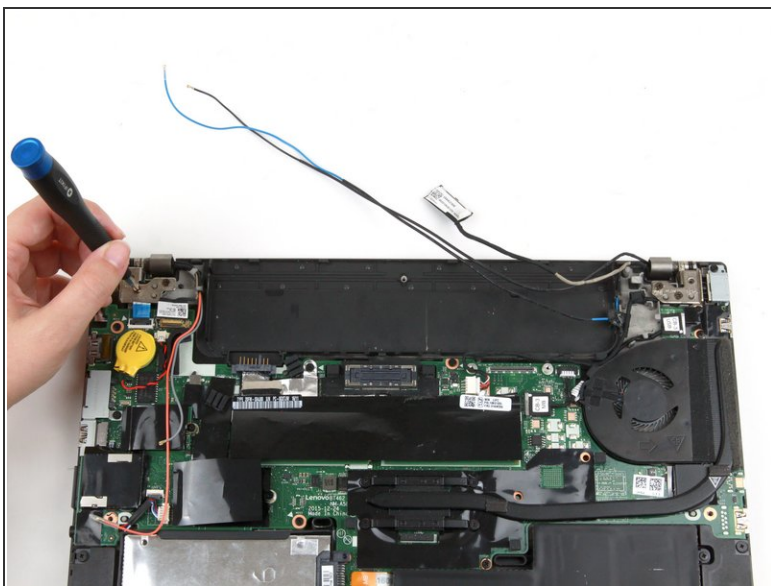
- Use your fingers to remove the gray and red coaxial cables from their slots along the motherboard.

Step 18



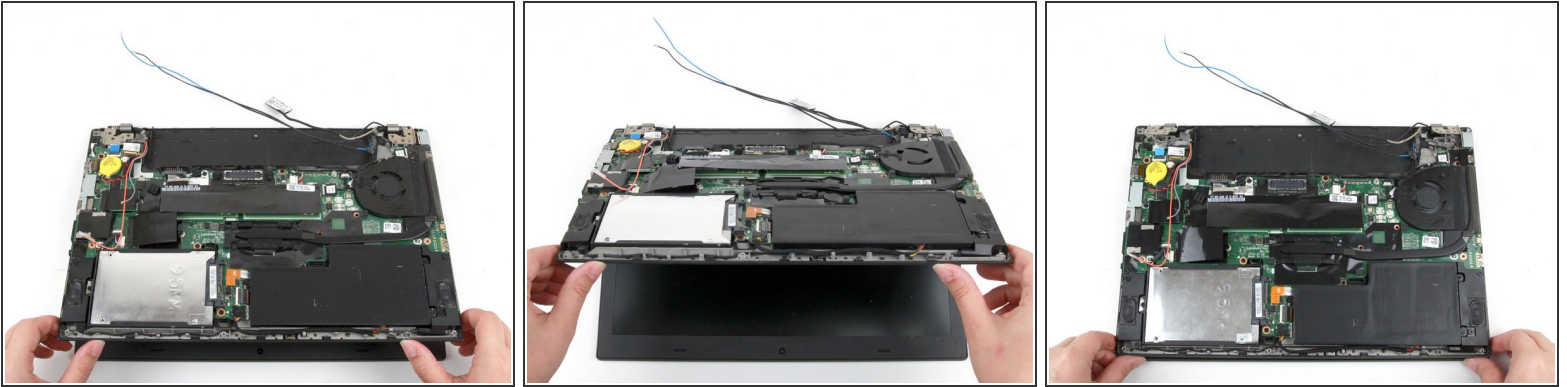
- Use your fingers to remove the blue and black coaxial cables from their slots along the top of the motherboard.

Step 19



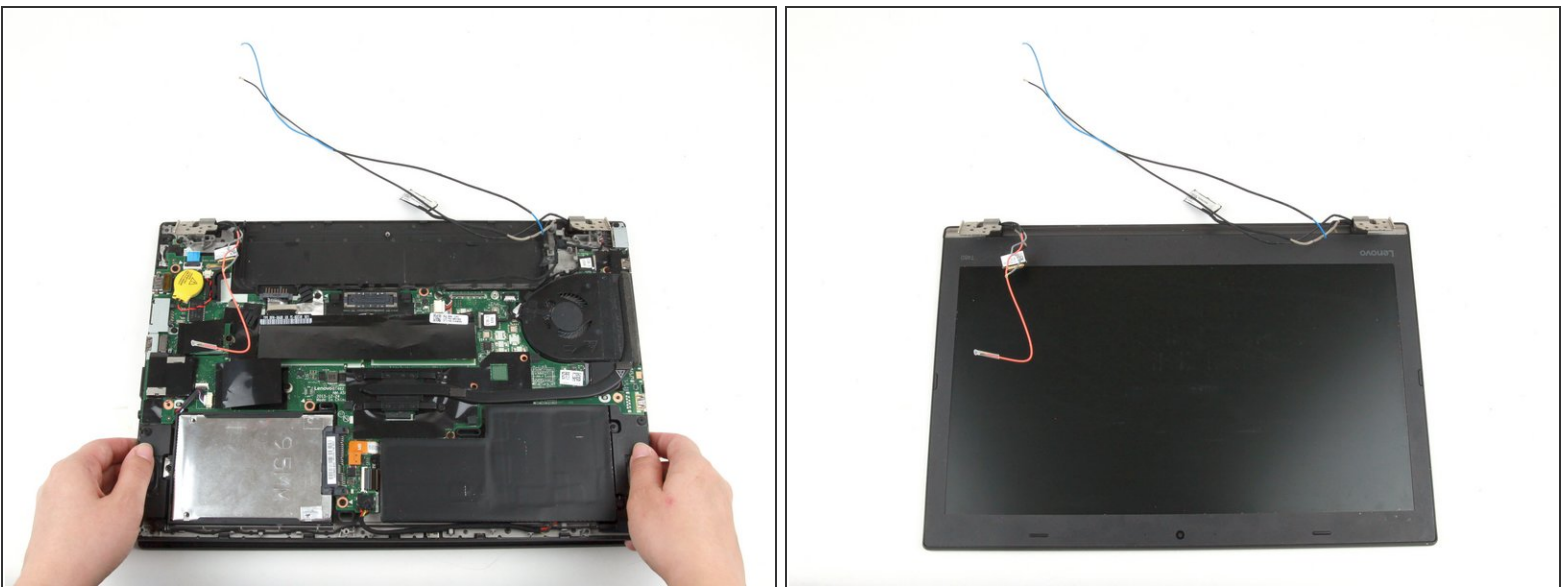
- Remove the four 4.7 mm screws from the hinges using a Phillips #1 screwdriver.

Step 20



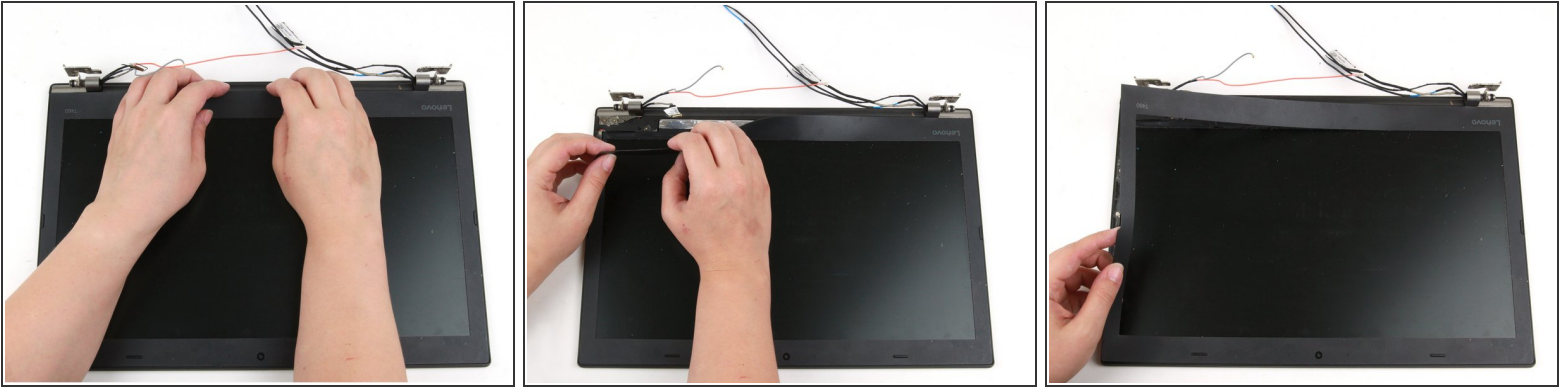
- Lift the bottom of the laptop up by a few inches to rotate the two upper hinges.
- Place the bottom of the laptop back down.

Step 21



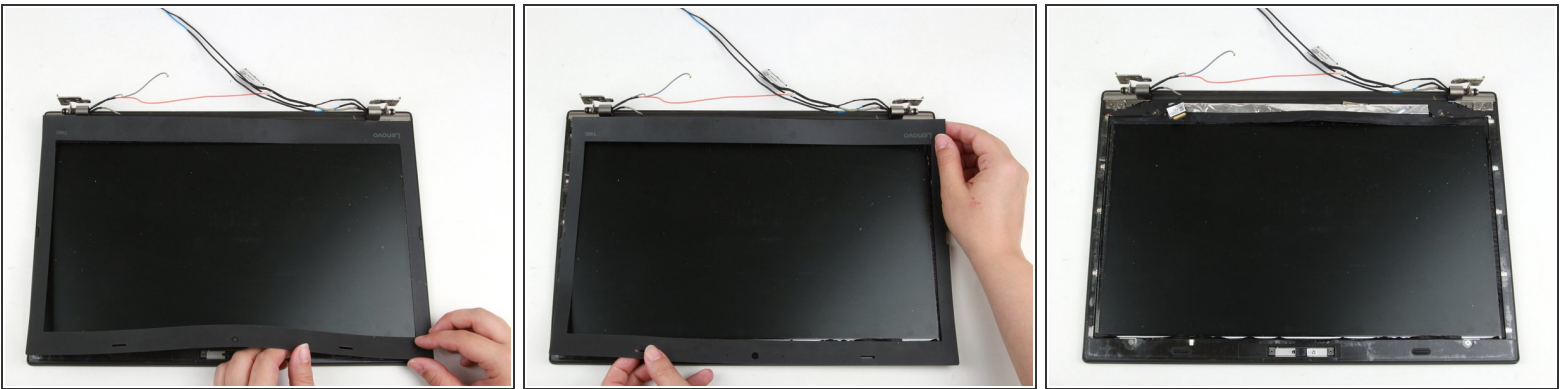
- Use both of your hands to lift the bottom of the laptop away from the LCD assembly.

Step 22 — LCD Bezel Assembly



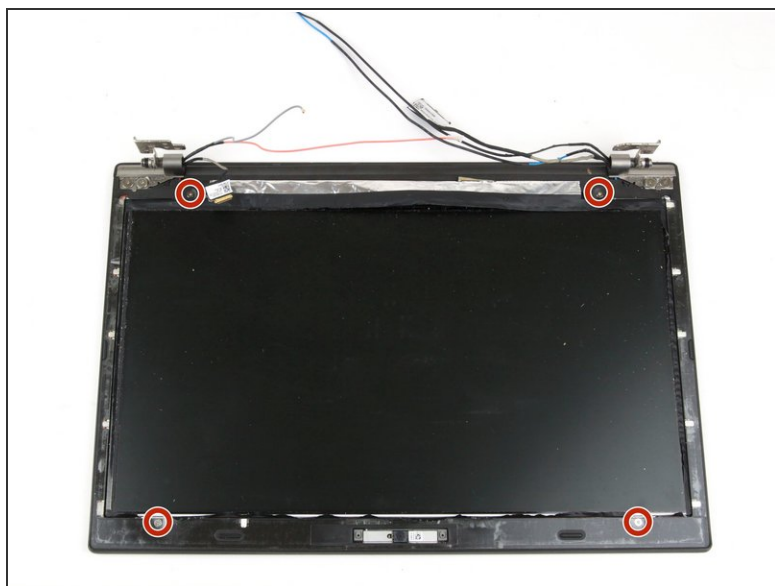
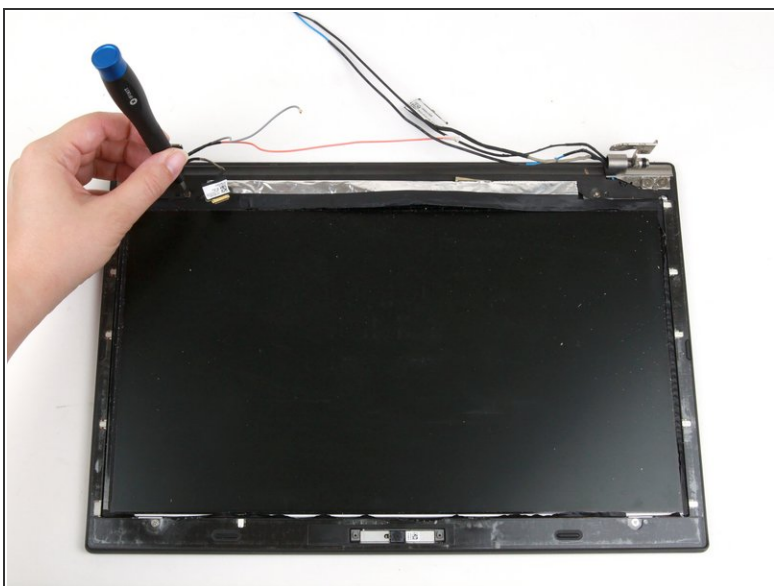
- Use your hands to peel up the thin LCD bezel sheet from the rest of the display, starting in the area between the hinges.
- Use your hands to continue peeling the bezel sheet away from the left side of the laptop.

Step 23



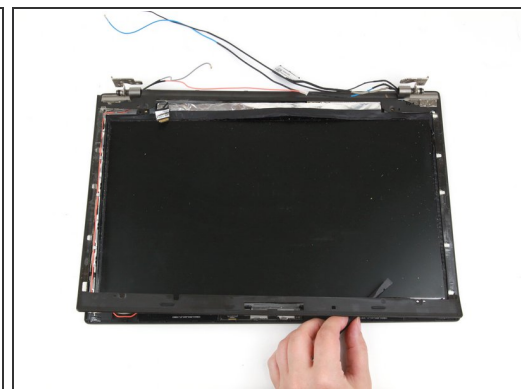
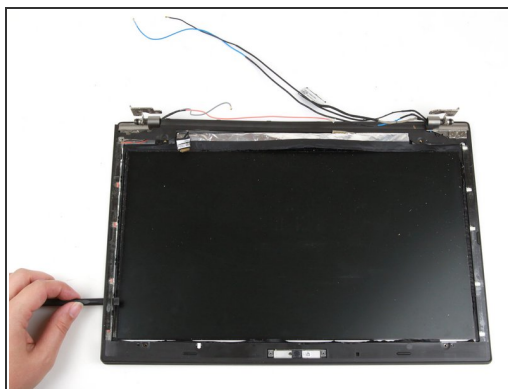
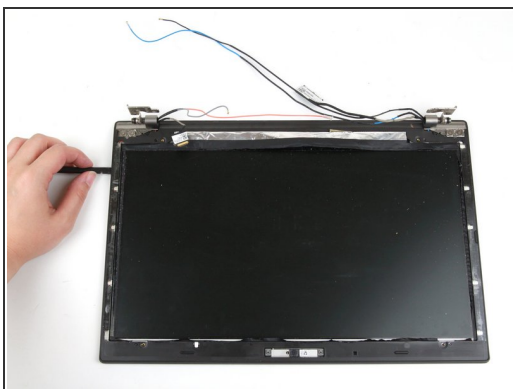
- Use your hands to continue peeling the bezel sheet away from the bottom and right sides of the laptop.
 - Use both hands to lift the LCD bezel sheet up and away from the laptop.
- ✦ When reassembling, you may have to reapply adhesive beneath the LCD bezel sheet.

Step 24



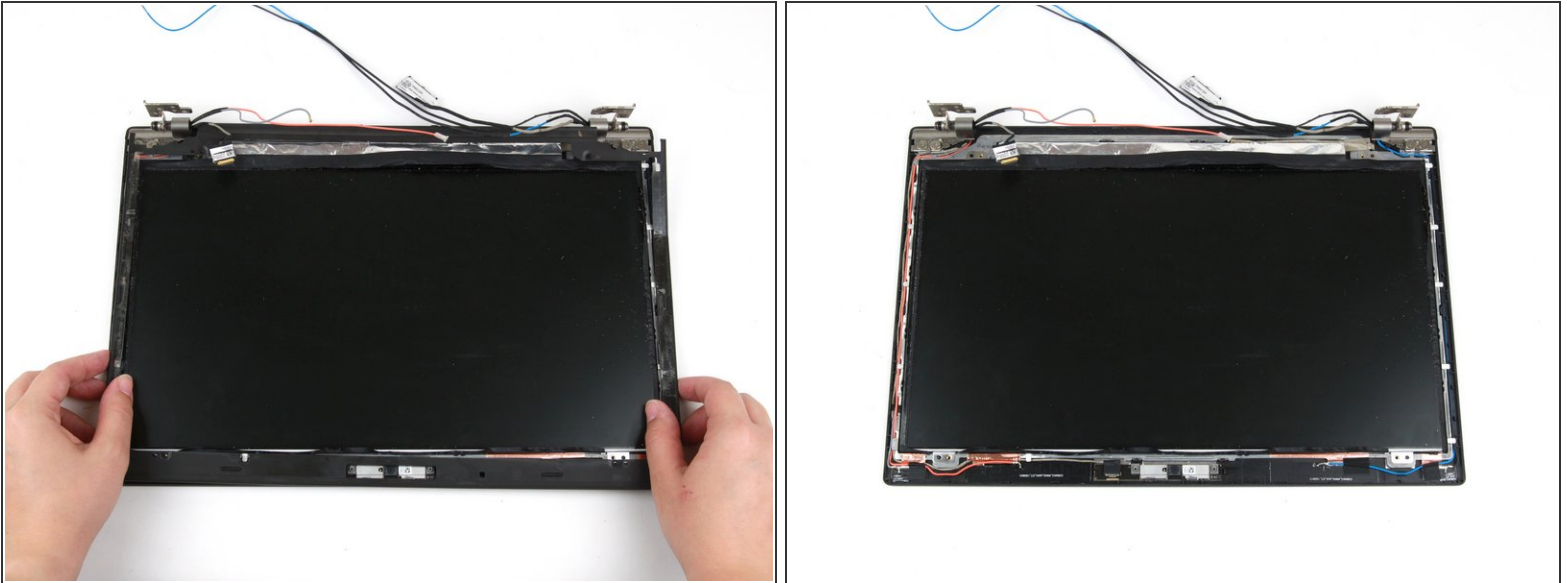
- Remove four 3.3 mm screws from the LCD bezel using a Phillips #1 screwdriver.

Step 25



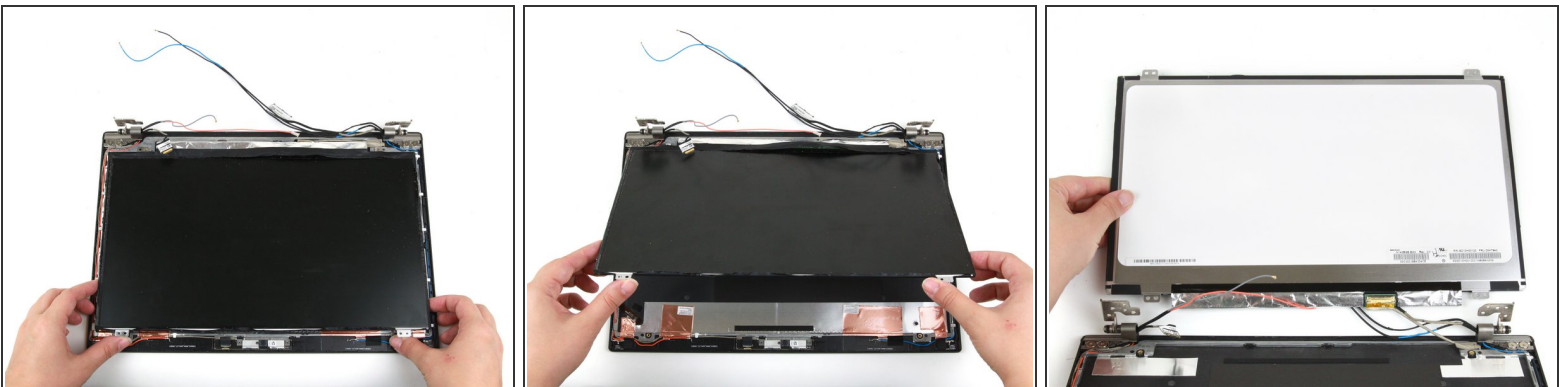
- Use the flat end of a spudger to create a gap between the bezel and the display, starting in the upper left corner.
 - Continue to use the spudger around the left side, bottom, and right side of the laptop to detach the clips securing the bezel to the display.
- i** You may hear loud snaps when detaching the clips; this is normal.

Step 26



- Use both hands to lift the bezel up and away from the display assembly.

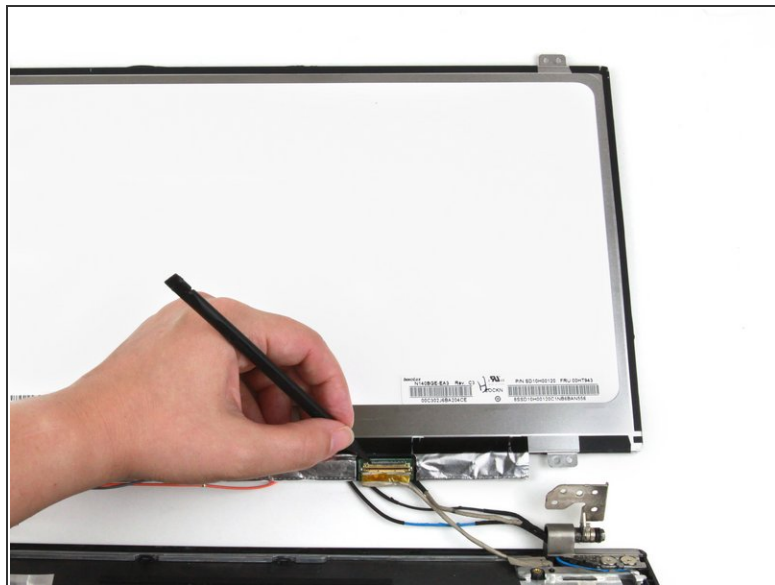
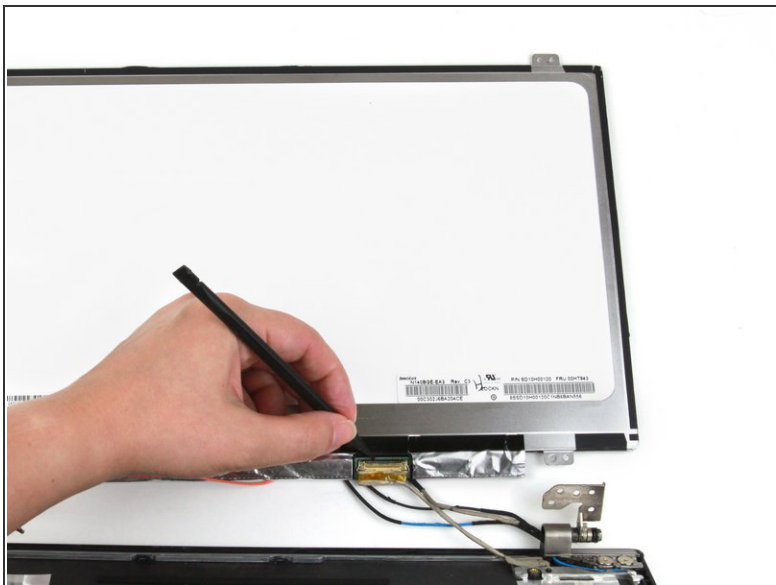
Step 27 — LCD Panel



- Use both hands to lift the bottom corners of the display panel
- Gently flip the display panel over.

⚠ Potential for device damage: The display cable is still connecting the display panel to the rest of the display assembly, so be sure to flip the display panel over with caution.

Step 28



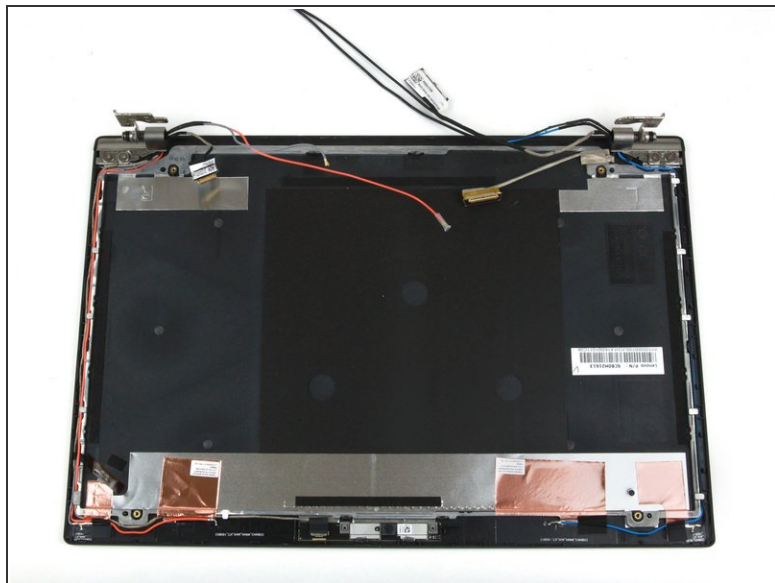
- Use the pointed end of a spudger to flip up the metal bar securing the connector.

Step 29



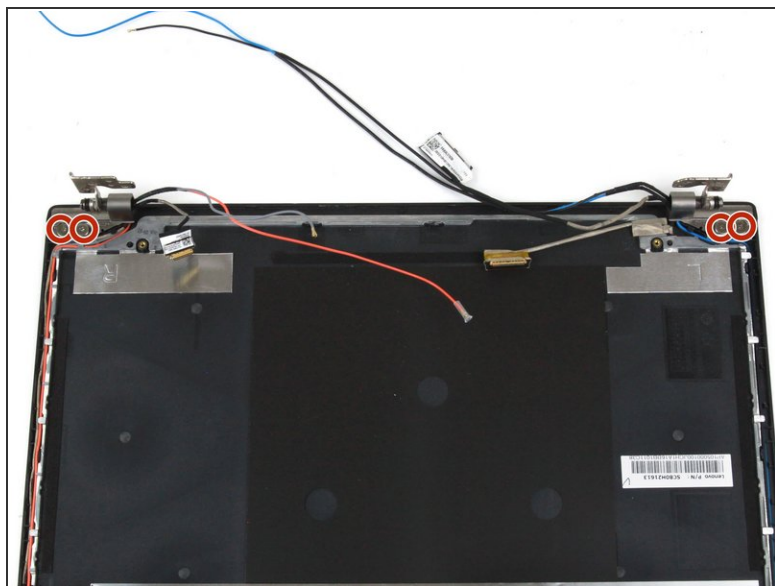
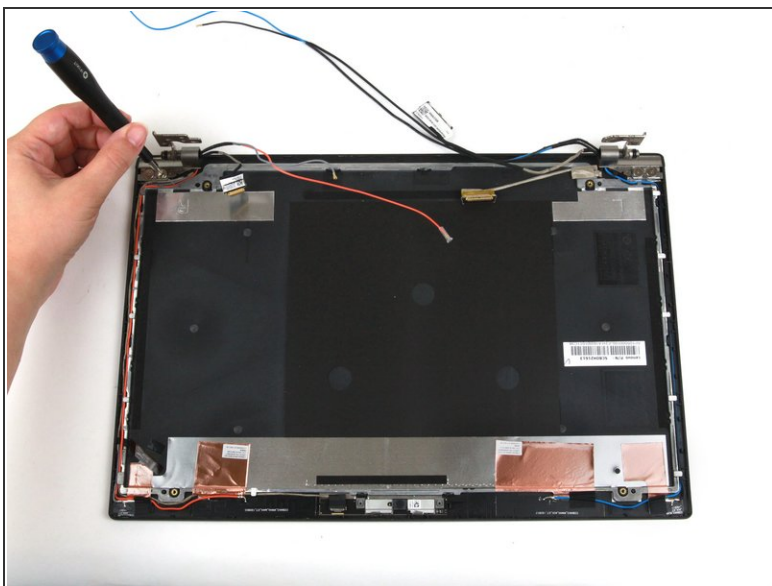
- Use the flat end of a spudger to disconnect the display cable from its socket.

Step 30



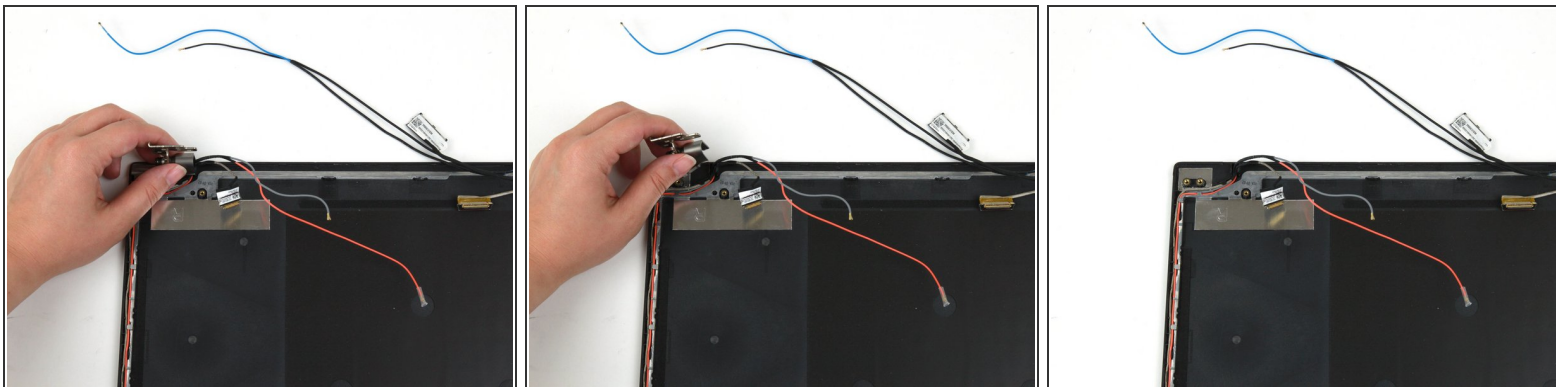
- Use your hands to remove the display panel from the rest of the display assembly.

Step 31 — Hinges



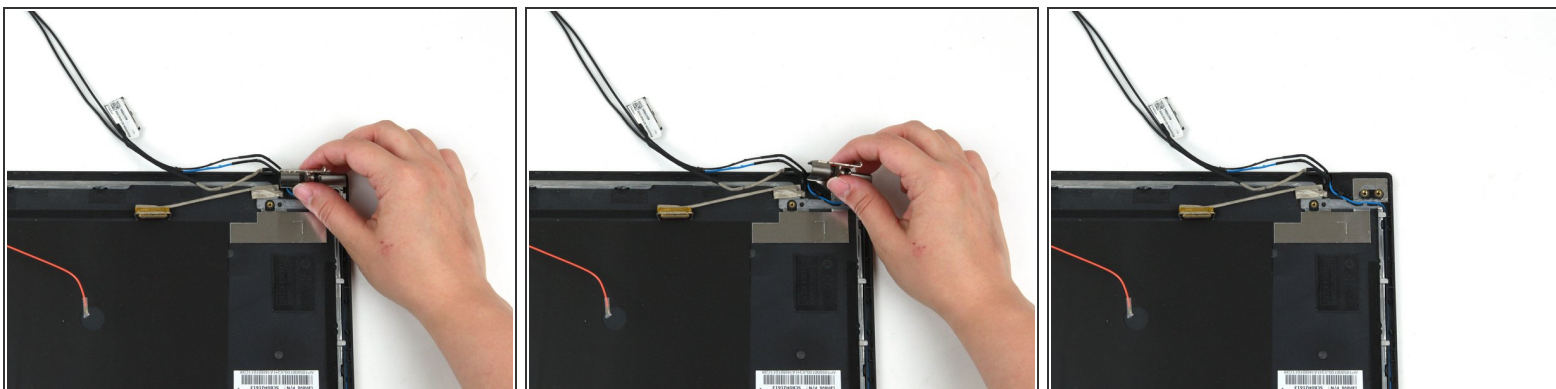
- Remove the four 3.2 mm hinge screws using a Phillips #1 screwdriver.

Step 32



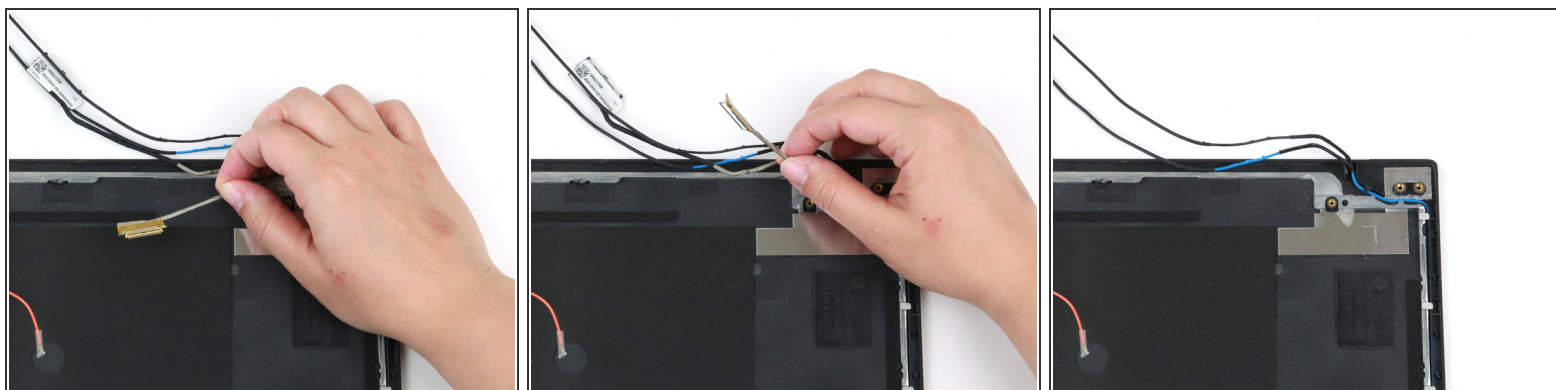
- Use your fingers to lift the hinge in the upper left corner up and away from the laptop.

Step 33



- Use your fingers to lift the hinge in the upper right corner up and away from the laptop.

Step 34 — LCD Cable



- Use your fingers to lift the gray LCD cable up and away from the laptop.

To reassemble your device, follow these instructions in reverse order.

Take your e-waste to an [R2 or e-Stewards certified recycler](#).

Repair didn't go as planned? Try some [basic troubleshooting](#), or ask our [Answers community](#) for help.