



# Samsung Galaxy Watch Active2 Screen Replacement

How to replace a cracked or broken screen on your Samsung Galaxy Watch Active2.

Written By: Tobias Isakeit



# INTRODUCTION

Use this guide to replace a cracked or broken screen on your Samsung Galaxy Watch Active2.



## TOOLS:

- [Tri-point Y00 Screwdriver](#) (1)
- [iFixit Opening Picks \(Set of 6\)](#) (1)
- [Spudger](#) (1)
- [iFixit Opening Tool](#) (1)



## PARTS:

- [Samsung Galaxy Watch Active2 \(44mm\) Screen](#) (1)
- [Samsung Galaxy Watch Active2 \(40mm\) Screen](#) (1)

## Step 1 — Turn off the watch



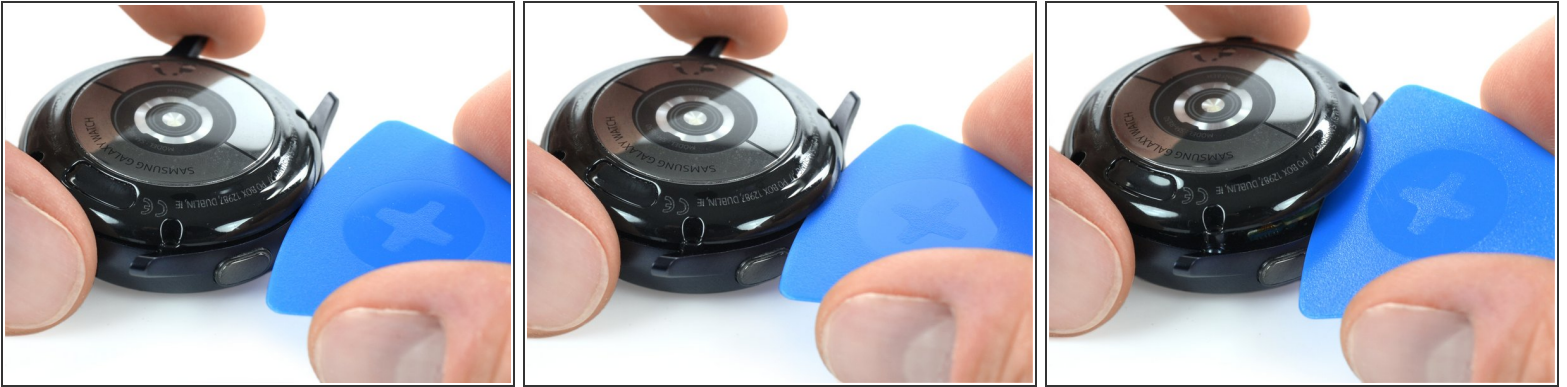
- Turn off the Galaxy Watch Active2 by pushing and holding the bottom button for approximately 3 seconds. You should feel a short vibration.
- When the "Power off" symbol appears, tap the center of the screen to make it shut down. You should feel a longer vibration for confirmation.

## Step 2 — Remove the rear screws



- Use a Tri-point Y00 screwdriver to remove the four 4 mm-long screws on the back of the watch.

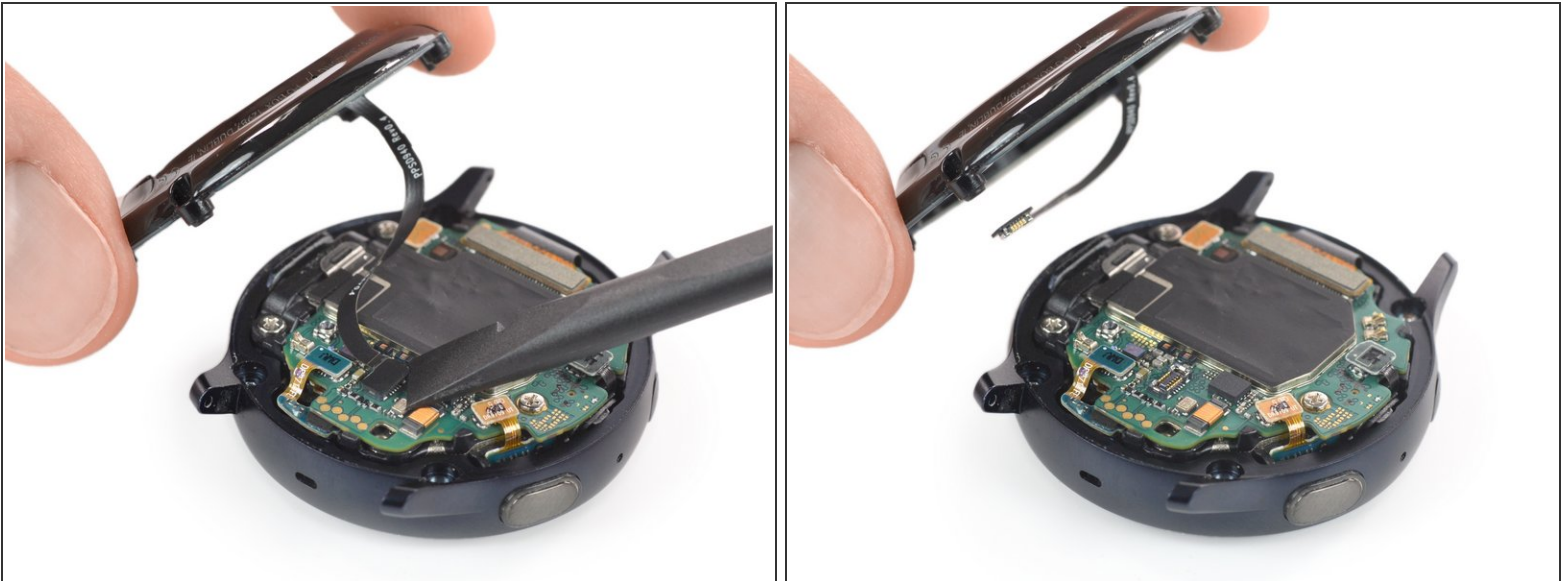
### Step 3 — Separate the back cover from the housing



- Use an opening pick and place it between the plastic back cover and the metal housing near the buttons.
- Push the opening pick into the gap to separate the back cover from the housing.

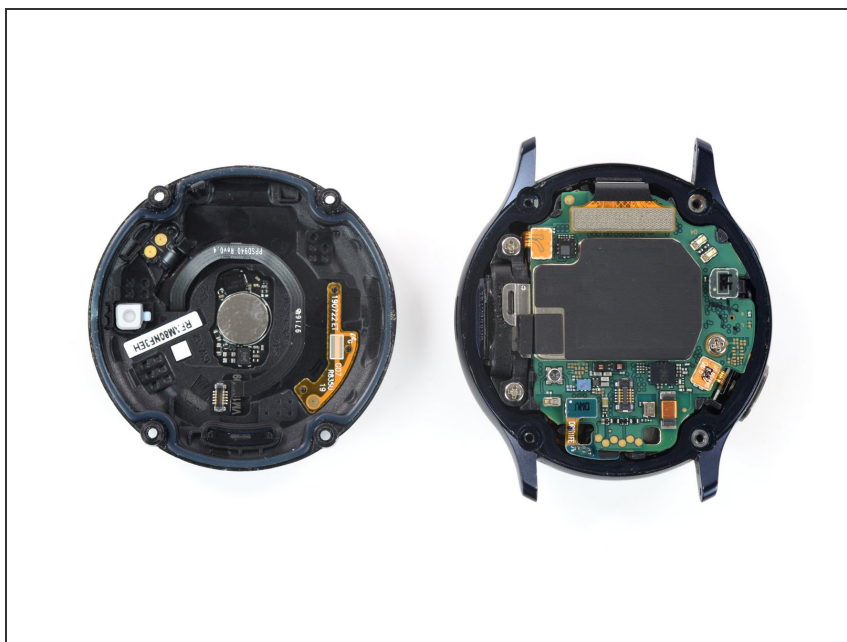
**⚠ Don't remove the back cover all the way yet. There is a cable connecting it to the motherboard.**

### Step 4 — Disconnect the sensor array



- Carefully lift the back cover to access the sensor array connector.
- Use a spudger to disconnect the sensor array from the motherboard.

## Step 5 — Remove the back cover



- Remove the back cover.

## Step 6 — Disconnect the display and speaker



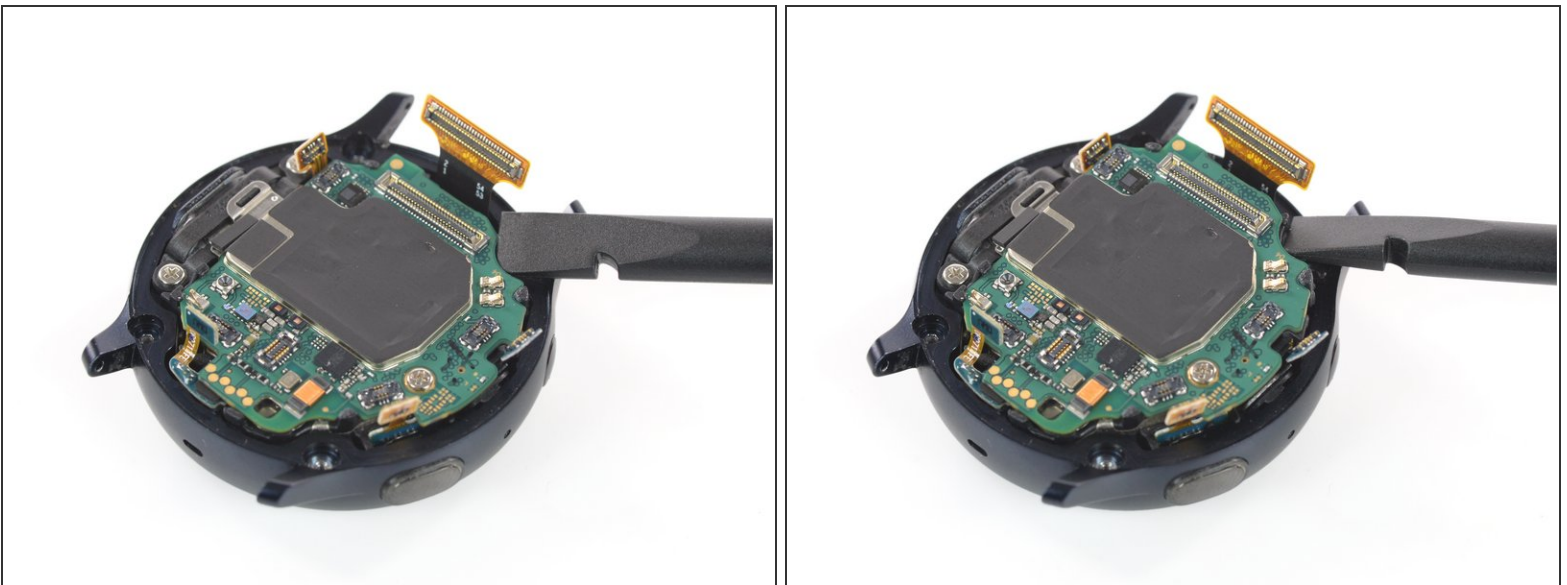
- Use a spudger to disconnect the display assembly and the speaker.

## Step 7 — Disconnect the barometric sensor, buttons, and mic




- Use a spudger to disconnect the barometric sensor, the buttons, and the microphone.

## Step 8 — Lift the core assembly



- Place a spudger underneath the motherboard at the top right next to the display connector.
- Slightly twist and lever the spudger to loosen the core assembly.

 It might help to also check the comments below this and the next step if you're having difficulties.

## Step 9 — Remove the core assembly



- Grab the core assembly and carefully slide it out from under the cables.
- Remove the core assembly.

## Step 10 — Loosen the display



- Place the edge of an opening tool under the speaker unit.
- Lever the opening tool down to separate the display from the frame.

## Step 11 — Remove the frame



- Remove the frame from the display.
- ✦ Make sure to remove any remaining adhesive from the frame with isopropyl alcohol (>90%) before applying the adhesive or installing the new display.

If possible, turn on your device and test your repair before installing new adhesive and resealing.

Apply new adhesive where necessary after cleaning the relevant areas with isopropyl alcohol (>90%). You may need to remove adhesive backings from the new part before installing.

To reassemble your device, follow these instructions in reverse order.

Take your e-waste to an [R2 or e-Stewards certified recycler](#).

Repair didn't go as planned? Try some [basic troubleshooting](#), or ask our [Answers community](#) for help.