



Backbone One Face Buttons Replacement

How to replace the face buttons on your Backbone One.

Written By: Adriana Zwink



INTRODUCTION

Use this guide to replace the face buttons on your Backbone One.



TOOLS:

- [Phillips #0 Screwdriver](#) (1)
 - [ESD Safe Tweezers Blunt Nose](#) (1)
 - [iFixit Opening Picks set of 6](#) (1)
-

Step 1 — Remove the screws



- Use a Phillips screwdriver to remove the four 5.9 mm-long screws.

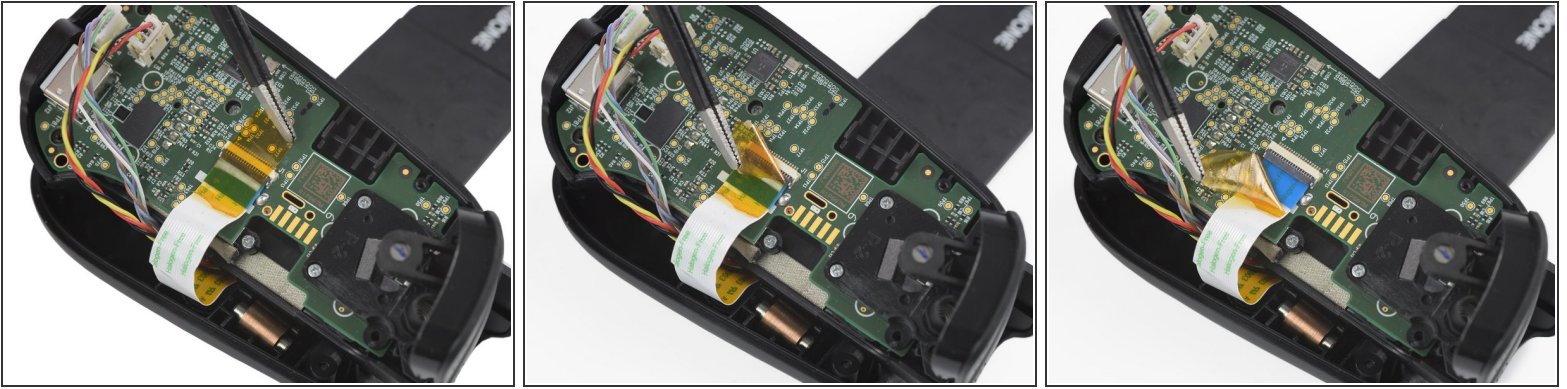
Step 2 — Rotate the upper part



- Lift up the upper cover of the controller.
- Swing the upper cover over and place it on the controller case.

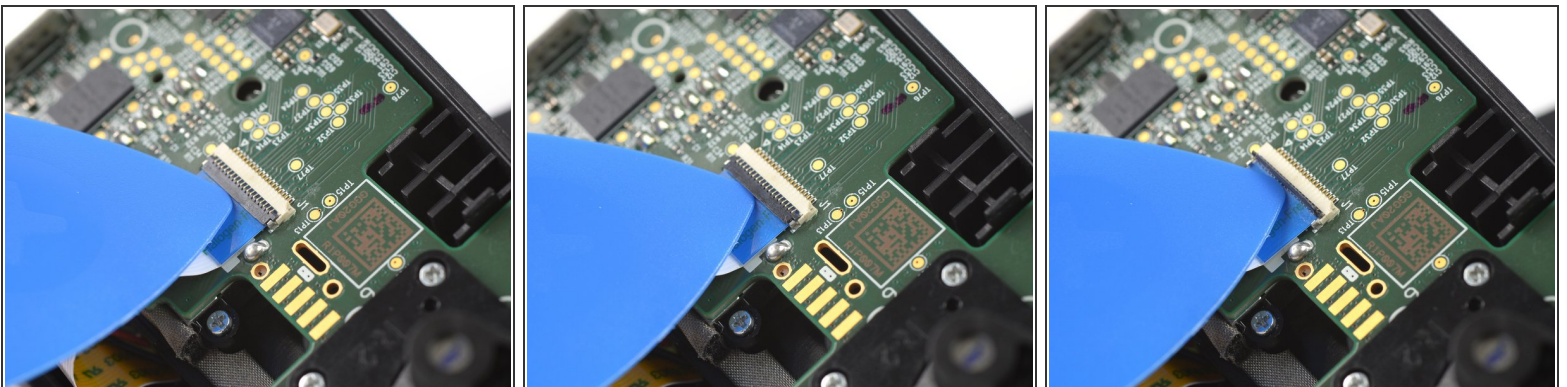
⚠ Make sure that the interconnecting cable has no tension.

Step 3 — Remove the protective tape



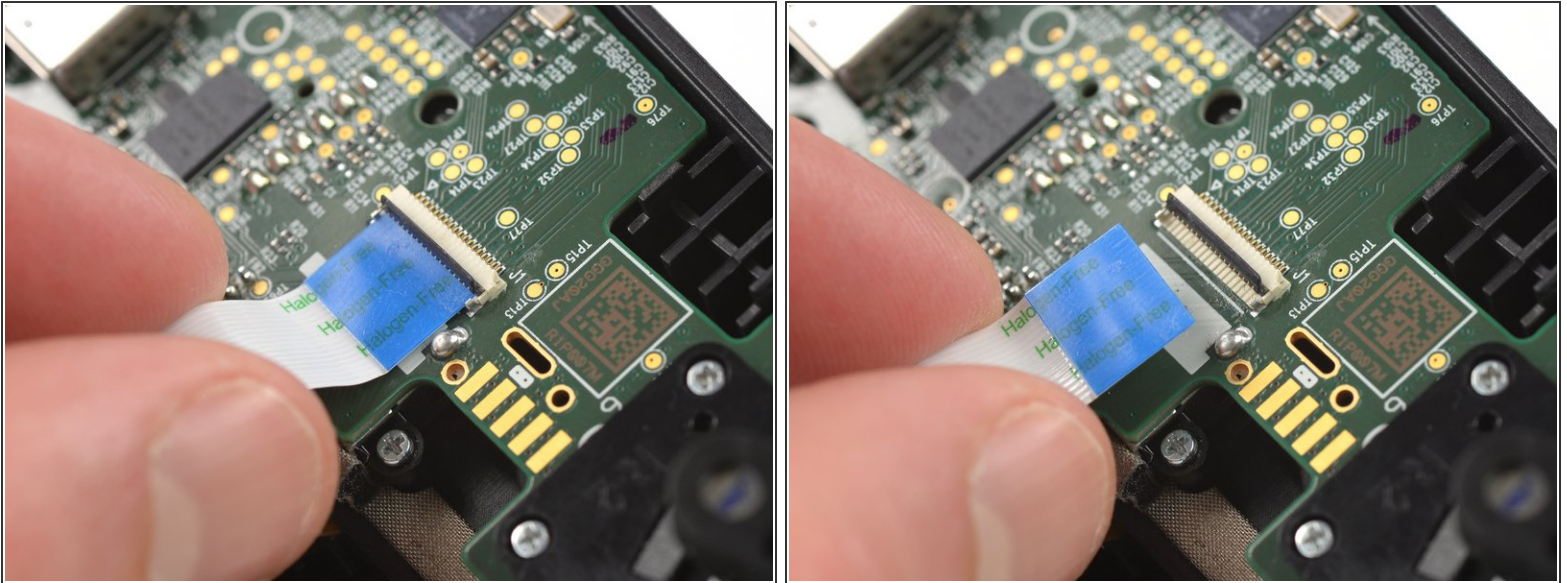
- Use a pair of tweezers to remove the yellow protective tape which is placed over the interconnect cable and the connector.

Step 4 — Open the interconnect cable ZIF connector



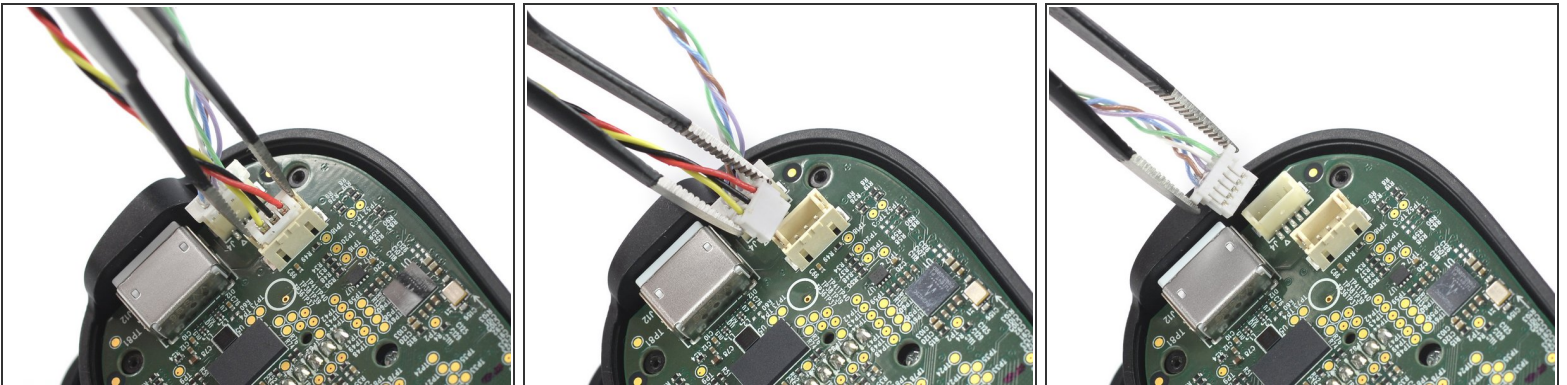
- Use the tip of an opening pick to open the gray flap of the interconnect cable ZIF connector by pushing it upwards.

Step 5 — Disconnect the interconnect cable



- Disconnect the cable by pulling it straight out the ZIF connector.

Step 6 — Disconnect the phone connector cables



- Use a pair of tweezers to disconnect the phone connector cables out from their sockets.

Step 7 — Separate the upper case



- Separate the the upper case of the left controller handle.

Step 8 — Remove the screws



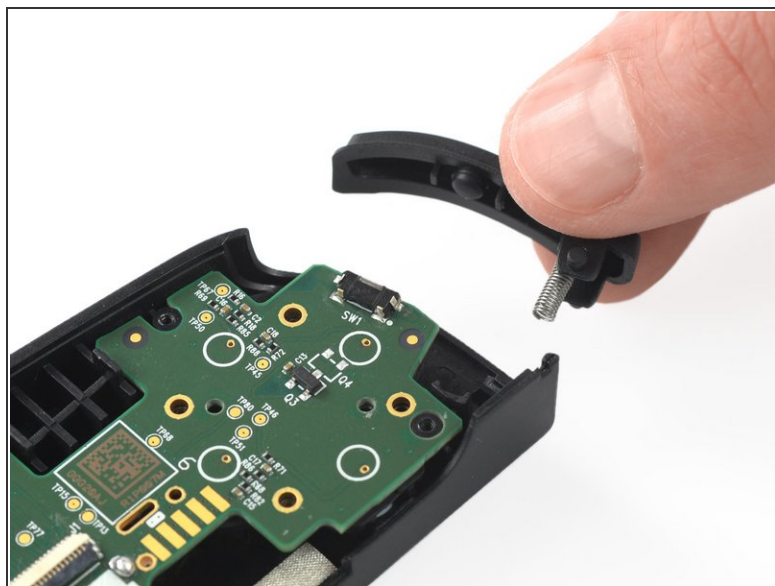
- Use a Phillips screwdriver to remove the three 5.9 mm-long screws.

Step 9 — Remove the trigger



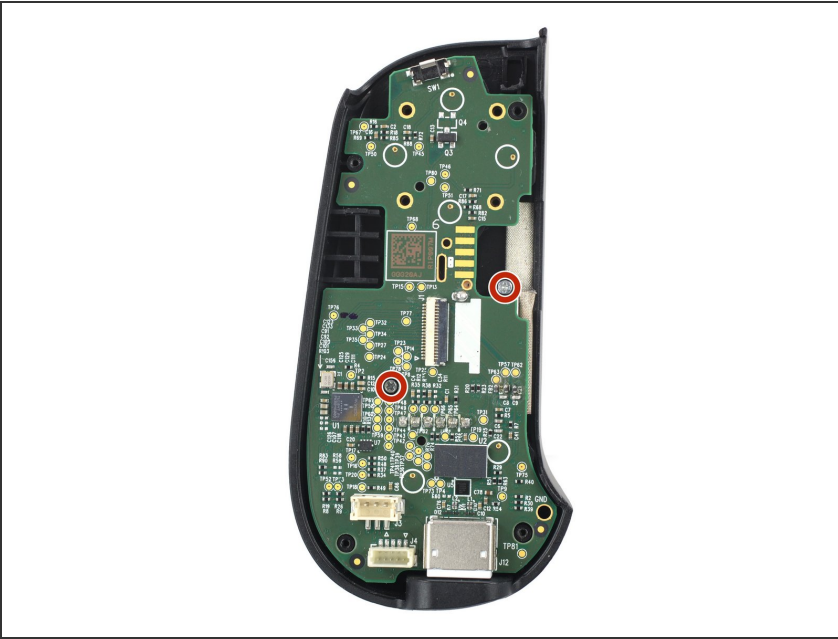
- Remove the trigger.

Step 10 — Remove the bumper



- Remove the bumper.

Step 11 — Remove the screws



- Use a Phillips screwdriver to remove the two 3.9 mm-long screws.

Step 12 — Remove the mainboard



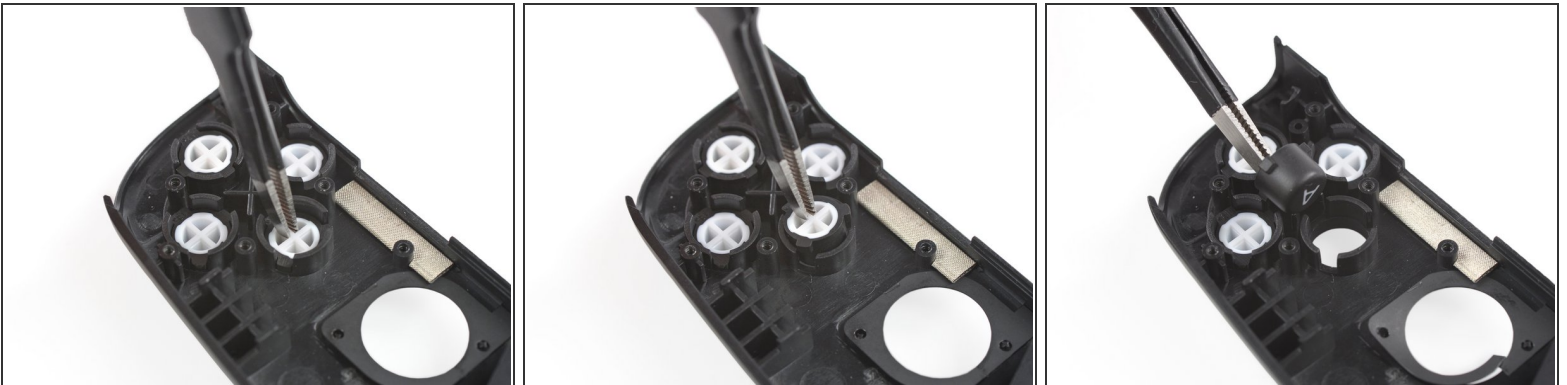
- Remove the mainboard.

Step 13 — Remove the rubber cover



- Use a pair of blunt nose tweezers to remove the rubber cover which is placed over the face buttons.

Step 14 — Remove the face buttons



- Use a pair of tweezers to remove the face buttons.

To reassemble your device, follow these instructions in reverse order.

Repair didn't go as planned? Ask our [Answers community](#) for help.