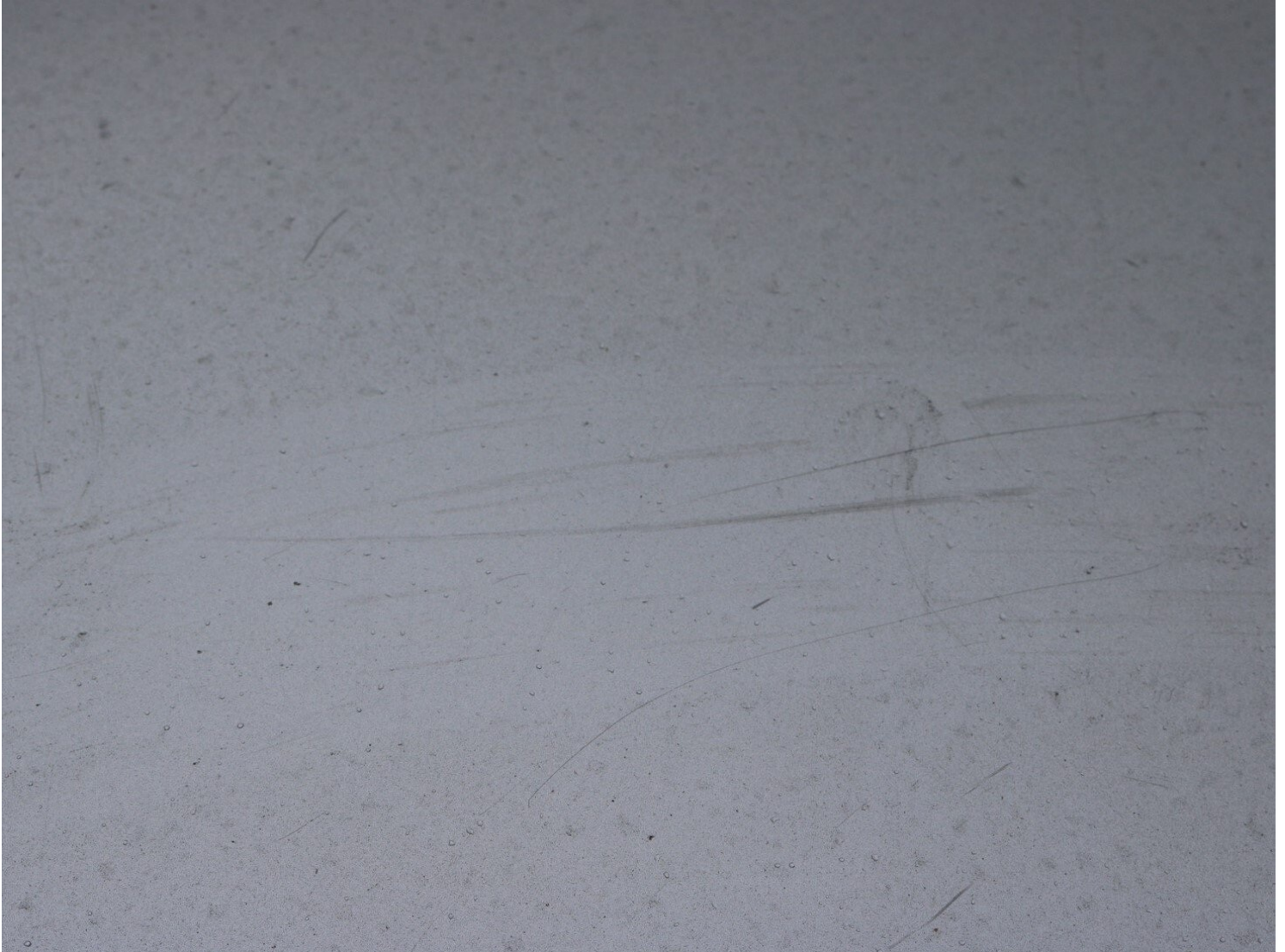




How to Repair a Scratch On a Car

This guide will show how to repair a scratch in...

Written By: Luke Tisdelle



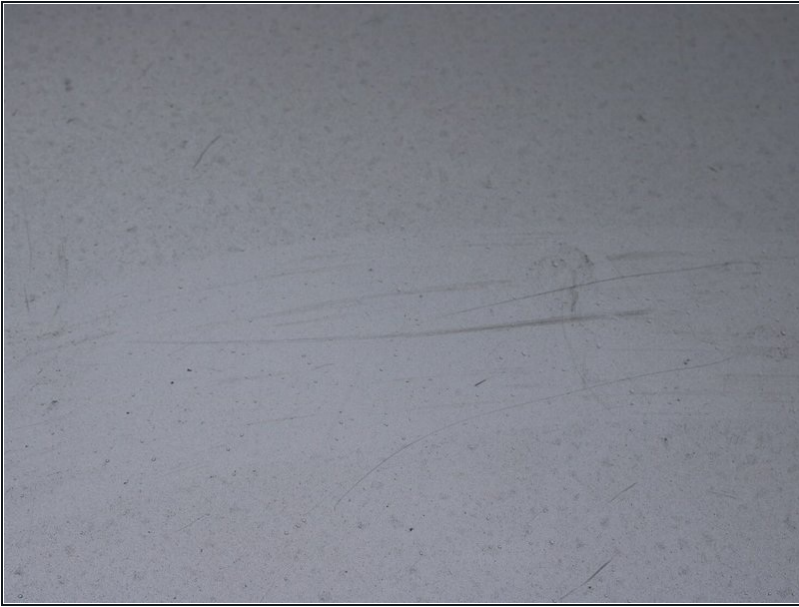
INTRODUCTION

This guide will show how to repair a scratch in the paint of a car. This includes wet sanding with various grit sandpaper, heaving machine polishing, and waxing. This guide is to repair scratches in the clear coat of the paint ONLY. It is NOT recommended to do this repair if the scratch is on an edge/sharp body line of the car as it is very easy to sand through the paint in this scenario, causing irreversible damage to your cars paint. If this repair is performed on a flat surface of the car, it is safe and easy to do following this guide. If a scratch is very deep it is recommended to bring to car to a professional auto body shop to handle the repair.

TOOLS:

[Rotary Polisher](#) (1)
[3000 Grit Sandpaper](#) (1)
[5000 Grit Sandpaper](#) (1)
[Heavy Polishing Compound](#) (1)
[Painter's Tape](#) (1)
[Microfiber Cleaning Cloths](#) (1)
[Car Wax](#) (1)
[Spray Bottle](#) (1)
[All Purpose Cleaner](#) (1)
[Heavy Polishing Pad](#) (1)

Step 1 — How to Repair a Scratch On a Car



① A good way to make sure a scratch is repairable by this method is to spray some water on the scratch. If the scratch disappears or fades, no longer showing a white color in some cases, then that means it is only in the clear coat of the paint and can be repaired.

⚠ If the scratch is on a sharp edge or body line of the car, this repair is not recommended as sanding on sharp edges of the paint can lead to removing too much paint too quickly, causing permanent damage.

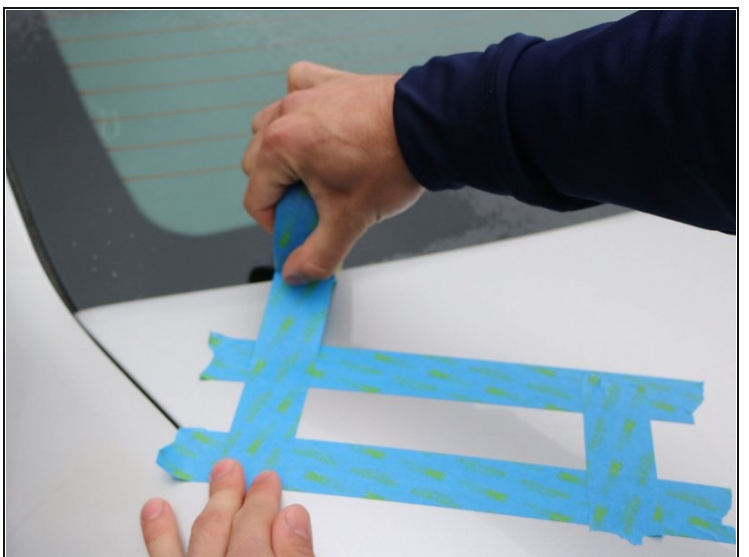
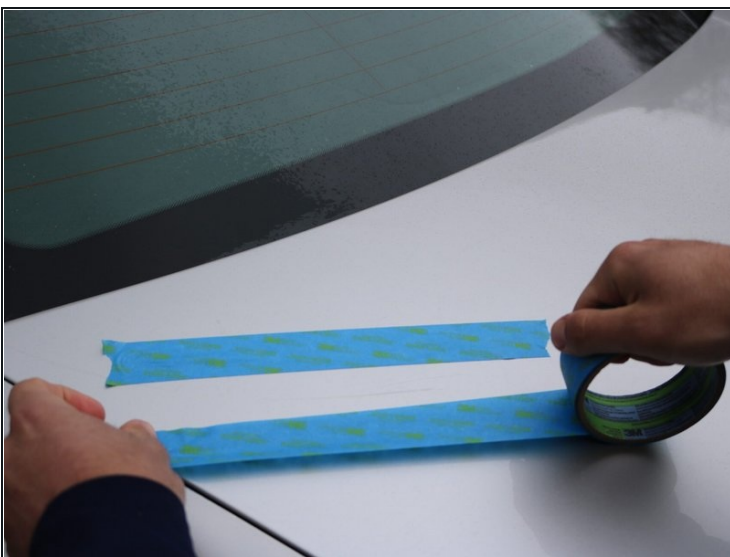
Step 2



- Clean the scratch and surrounding area with all purpose cleaner and [microfiber](#) towel (simple green, dish soap, Mr. Clean, etc). This ensures the area is contaminant free and when sanding you won't be scraping dirt back into the paint.

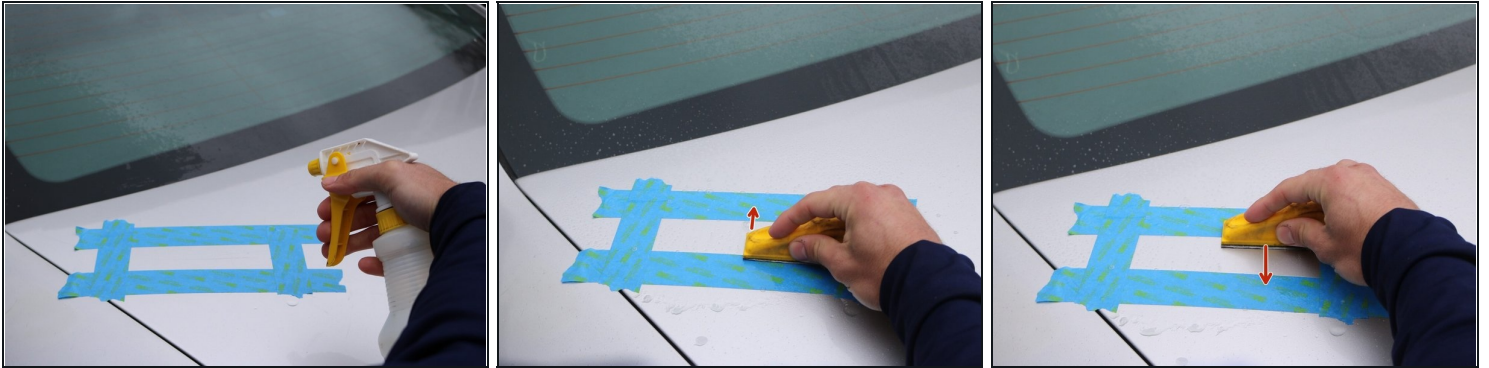
⚠ Do not use harsh chemicals or solvents such as bleach, acetone, or other chemicals as this can damage the paint.

Step 3



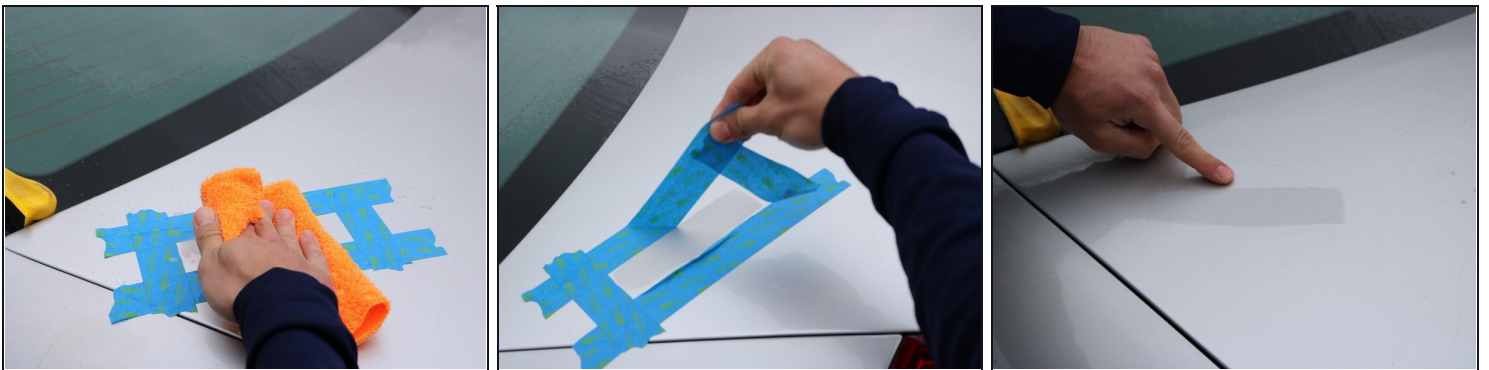
- Using painters tape, place tape the length of the scratch about 1 inch above and below it. Place tape on the sides of the scratch leaving about an inch on each side as well, creating a box.

Step 4



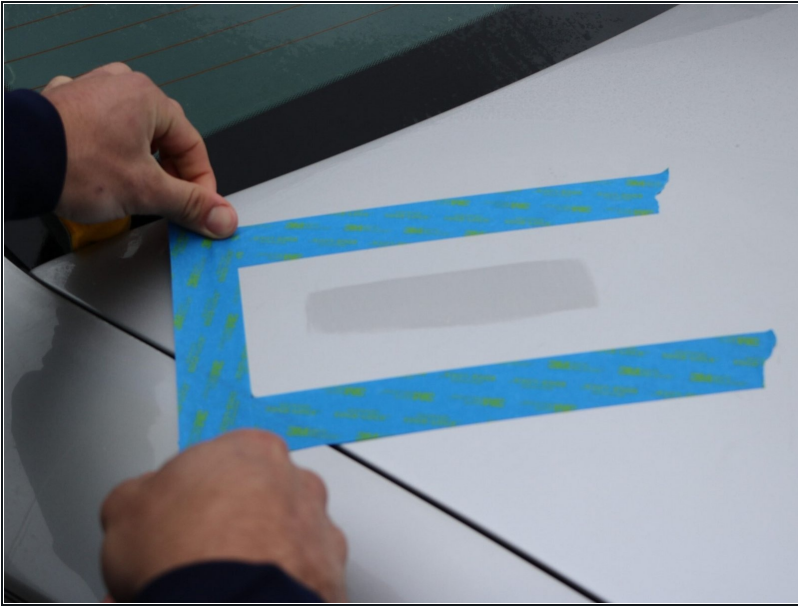
- Using a spray bottle filled with water, spray the area.
- Using 3000 grit sandpaper, sand the paint ONLY across the scratch, not the length of it. This will sand the clear coat down while also blending the scratch into the paint.
- Sand until the scratch is no longer visible. Be sure to sand flat and even. keep the area lubricated with water.

Step 5



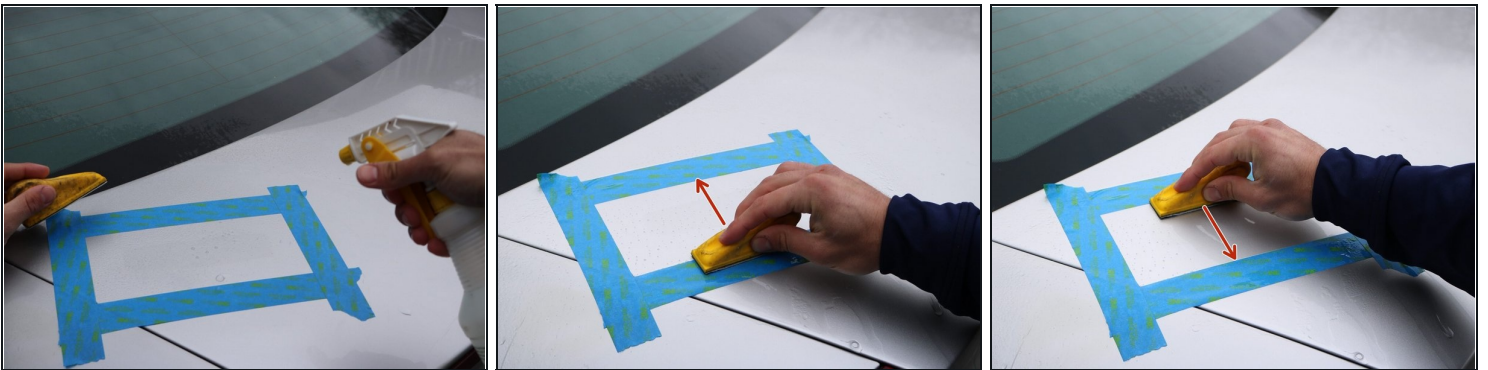
- Wipe down the area and remove the tape. The sanded area will be hazed.
- If the scratch is still visible when fully dry but disappears when wet, move on to the next step.
- If the scratch is still visible when wet, repeat step 4 as the next stage of sanding will be less aggressive and is to mainly remove the sanding scratches caused by the 3000 grit.

Step 6



- With painters tape, make another, bigger box about 1 inch away from the hazed area on all sides.

Step 7



- Using the same method as step 4, spray water on the area and use the 5000 grit sandpaper.
- Sand up until the tape, making sure to sand evenly, covering the entire taped in area, and keep it lubricated with water.
- Keep the sand paper flat and only sand in the direction the width of the scratch, not the length of it, as depicted.
- Dry off the surface to inspect the area. It is better to have an even haze from sanding rather than being able to see individual sanding lines.

Step 8



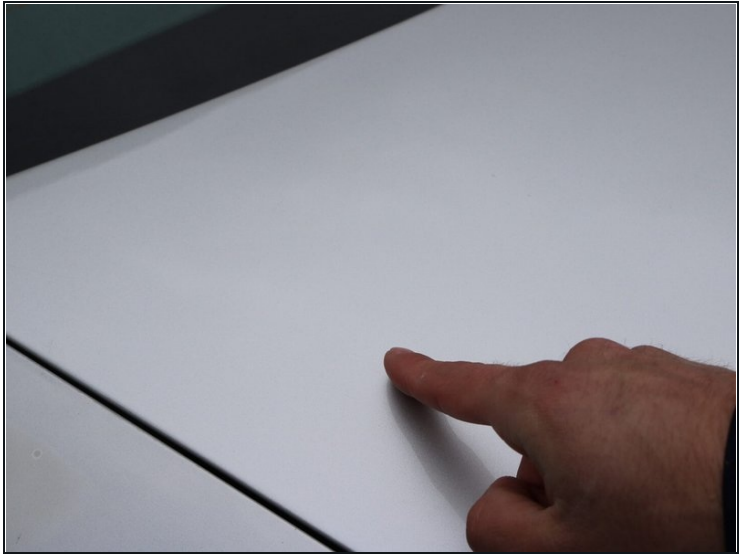
- Remove the tape and wipe down the area with a microfiber towel. The scratch should now be completely gone.
- You should be left with an even haze on the sanded area that is ready to be polished.

Step 9



- Using a machine polisher and a heavy polishing pad (in this case a wool pad), apply heavy polishing compound to the polishing pad in an X pattern.
 - If using a rotary polisher as depicted, use the medium speed setting to work the polish into the paint, make sure to cover the entire sanded area.
 - If using a random orbital polisher (also known as a DA or "dual action" polisher), use the highest speed setting.
 - Be sure to keep the polisher level, and moving. Don't keep it in one spot. Polish even beyond the sanded area.
- ☒ Polishing by hand is NOT recommended for this repair.

Step 10



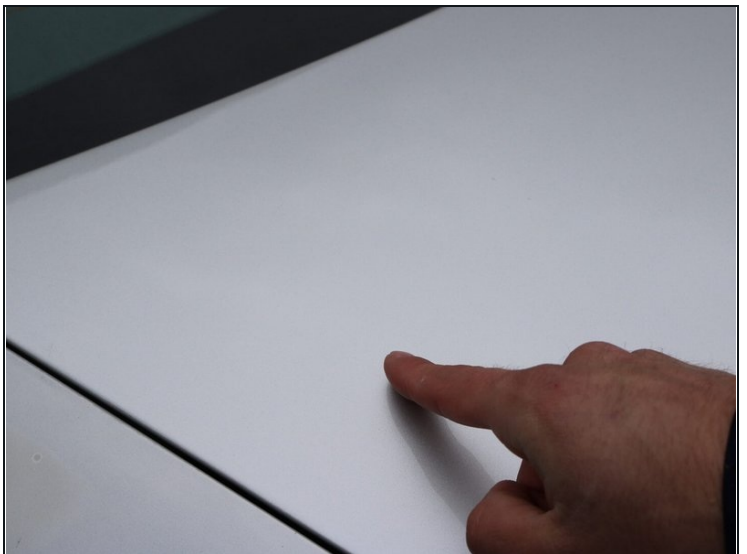
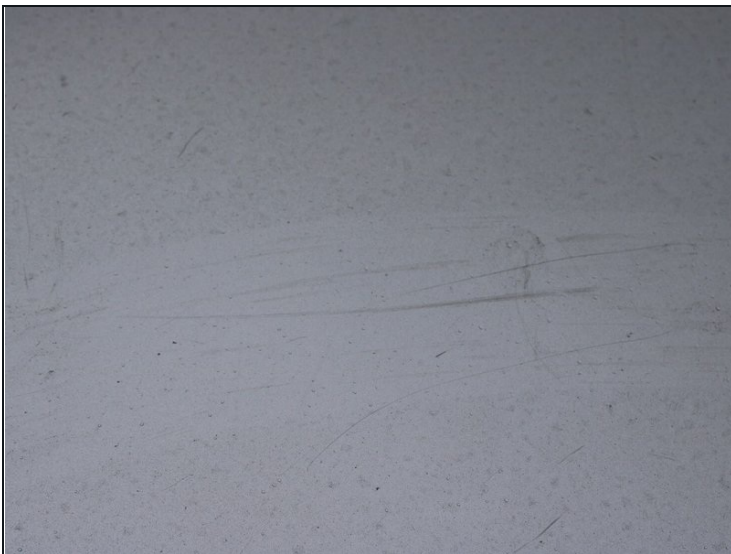
- Wipe the polishing compound off the paint and inspect the area. If you still see sanding scratches, repeat step 9 until the sanding scratches are gone.
- ① If the sanding scratches will not come out you may need a more aggressive polish or more aggressive polishing pad.

Step 11



- Grab your favorite wax. (in this case paste wax was used)
- Apply wax to an applicator pad and apply the wax in STRAIGHT LINES ONLY. This is because if something, such as a small rock, is between the pad, causing a scratch, it is much easier to remove a straight scratch than a circular one.
- Cover the entire area with a thin coat. Wait for the wax to haze for a few minutes then buff off with a microfiber towel.

Step 12



- The scratch is now repaired, and the paint protected with wax.

Your paint is now scratch free, at least for that one spot! Use this guide to repair all your scratches and pass you knowledge on to help others!