



Razer BlackWidow Chroma Back Panel Replacement

This guide will show you how to remove and...

Written By: Annika Grace Ford



INTRODUCTION

This guide will show you how to remove and replace the back panel of the Razer BlackWidow Chroma keyboard when it is broken or non-functional.

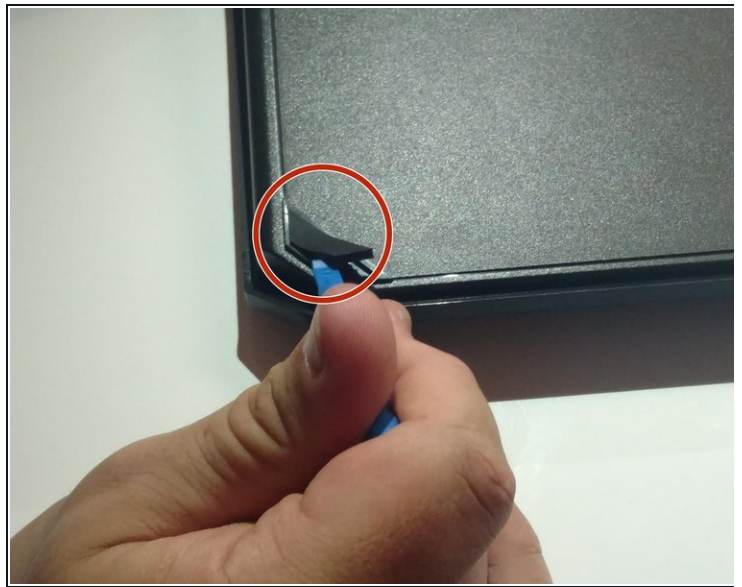
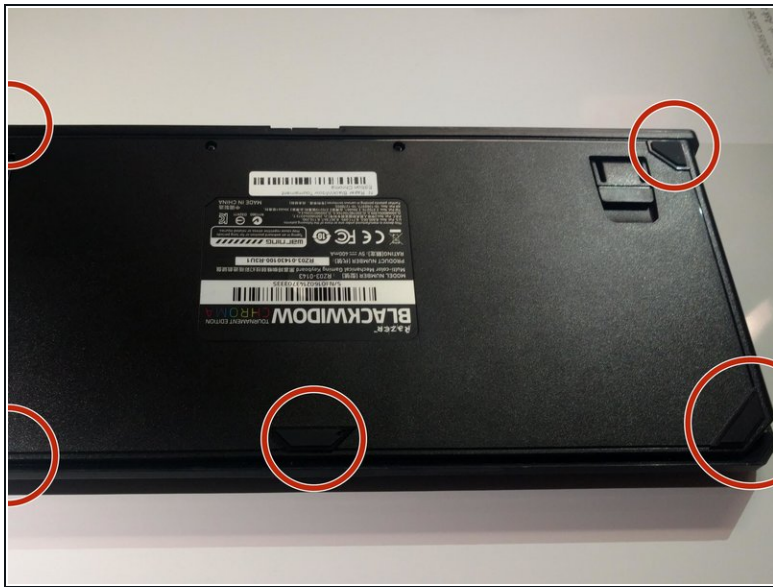
TOOLS:

[iFixit Opening Tool](#) (1)

[Phillips #1 Screwdriver](#) (1)

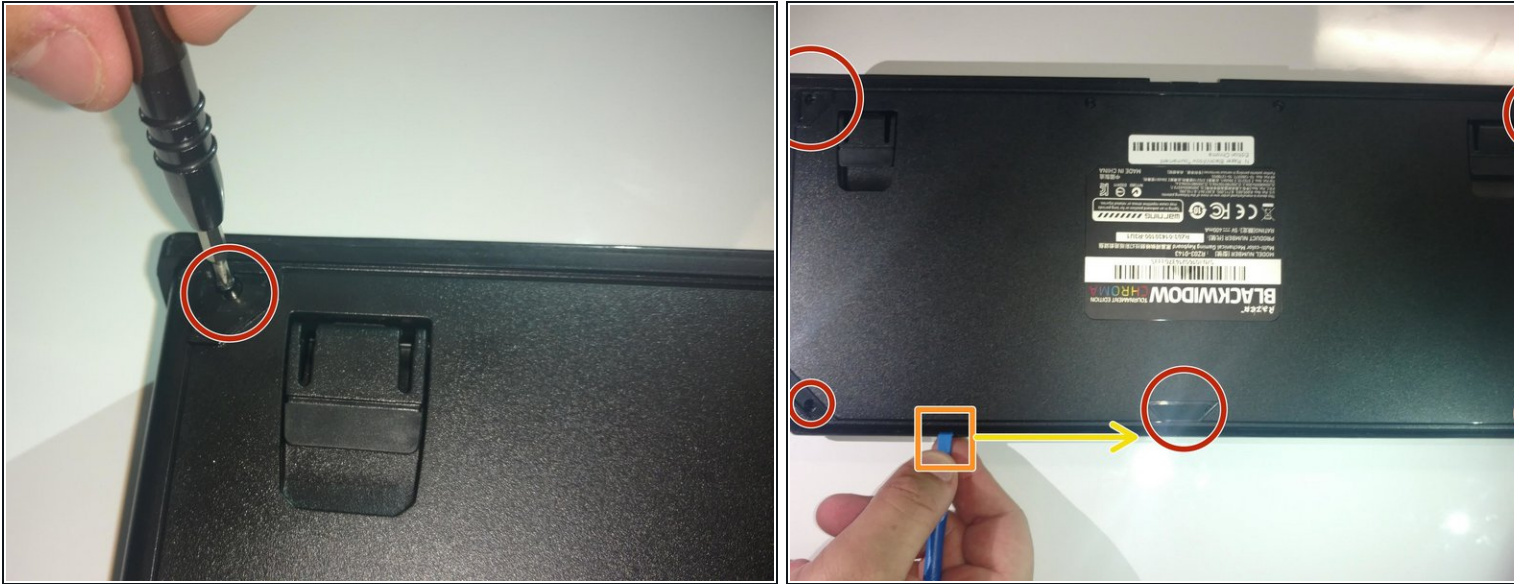
[Jimmy](#) (1)

Step 1 — Rubber Feet



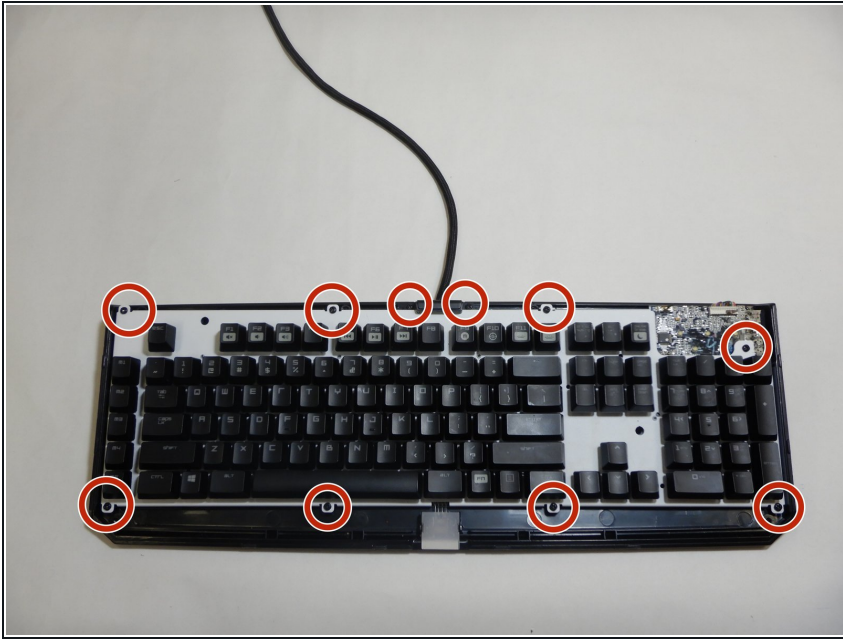
- Turn the keyboard over so that it is lying flat on its face.
- Use the iFixit opening tool to pry the rubber feet off the keyboard.

Step 2 — Front Panel



- Use a Phillips #1 screwdriver to remove the six screws on the back of the keyboard.
- Use an opening tool as a wedge between the front and back panel to pry open the front panel.
 - ⚠ If the front and back panel won't separate, **DO NOT** use excessive force. This may result in damaging the keyboard.
 - Instead, slide the opening tool across the keyboard in between the front and back panel. Go around the edges of the keyboard until the panels disconnect.
- Flip the keyboard over so the keys are facing up.
- Grabbing the left and right lips of the front panel, lift both ends up, removing the front panel.

Step 3 — Back Panel



- Using a Phillips #1 screwdriver, remove all ten screws found along the outer edges of the keyboard.

Step 4



- Insert the Jimmy along the edges of the back panel and remove the back panel from the device.

To reassemble your device, follow these instructions in reverse order.