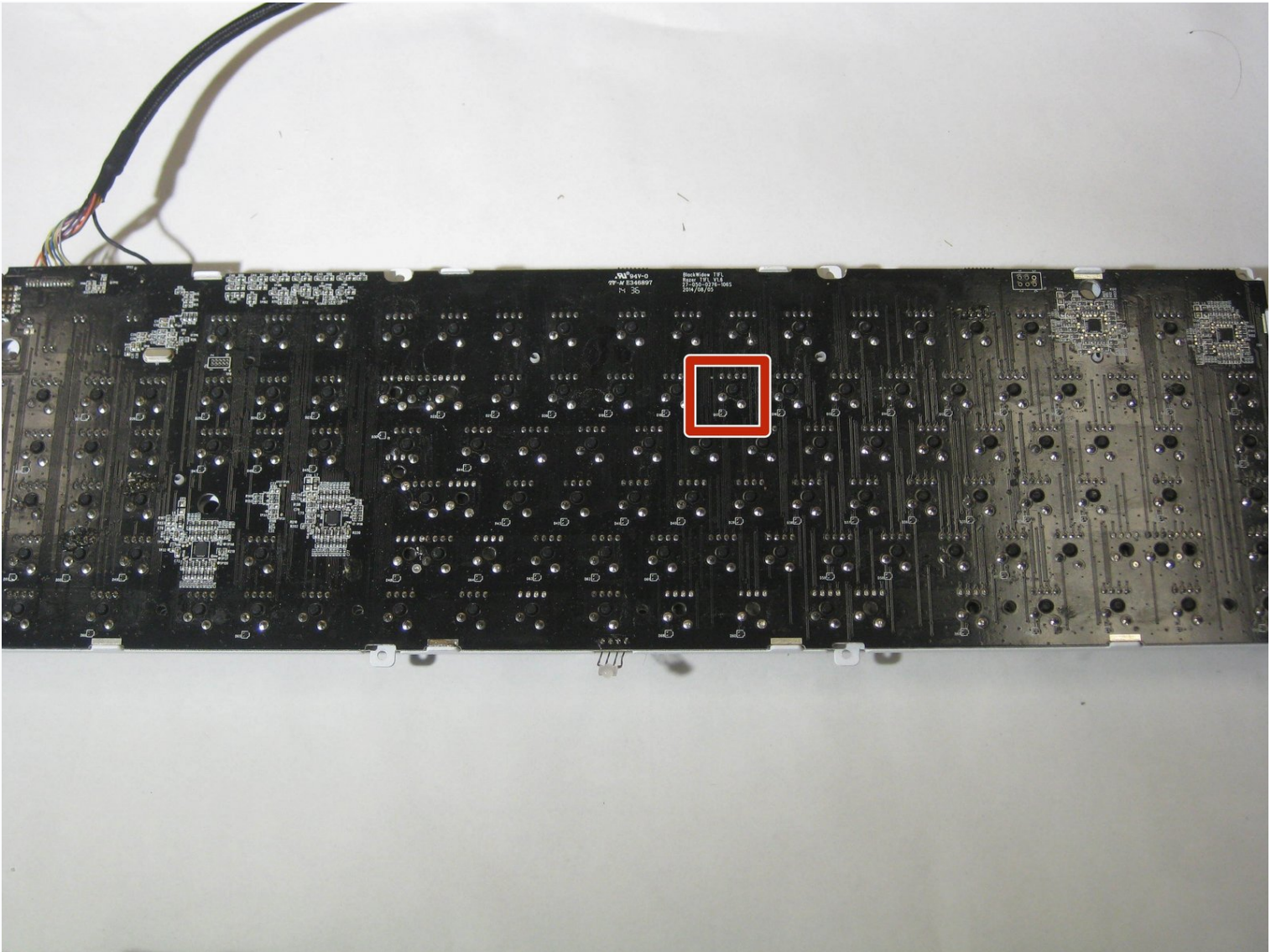




Razer Blackwidow Chroma Key Switch Replacement

This guide shows how to replace the switch that...

Written By: Annika Grace Ford



INTRODUCTION

This guide shows how to replace the switch that controls the action of the key when it malfunctions or stops working completely in the Razer BlackWidow Chroma keyboard.

You will need to know how to solder in order to complete this guide. For more information on soldering, please visit the [How to Solder and Desolder Connections guide](#).

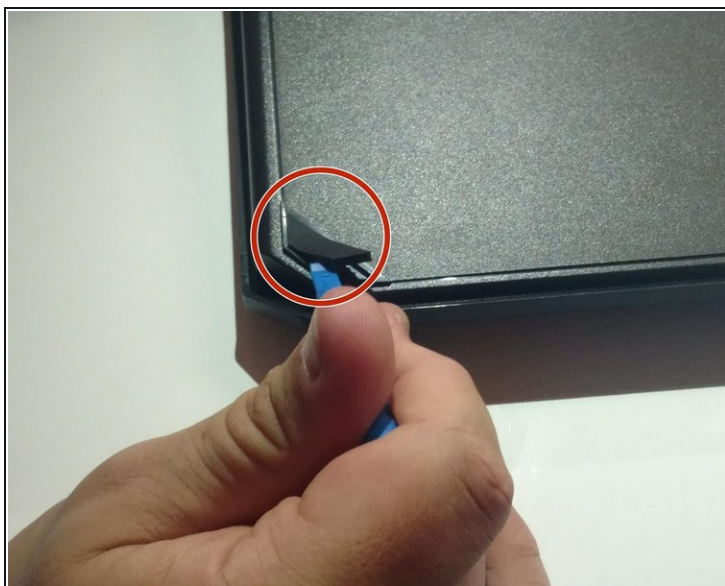
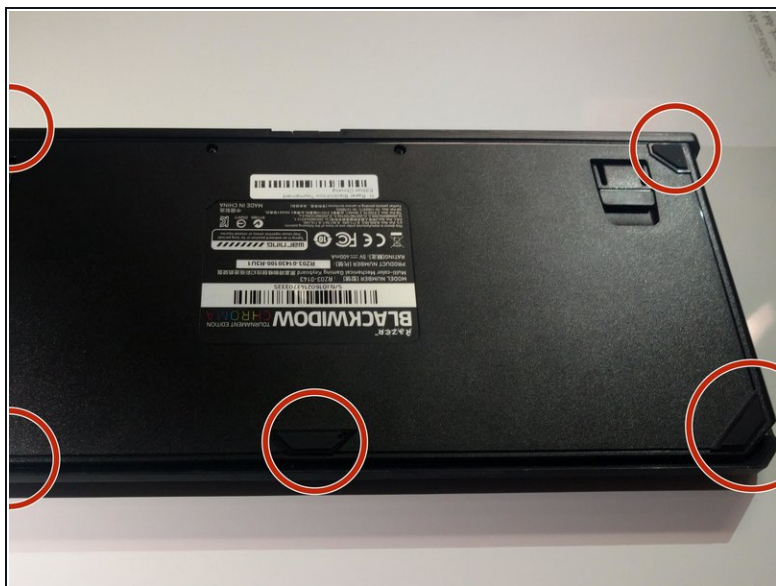
TOOLS:

iFixit Opening Tool (1)

Phillips #1 Screwdriver (1)

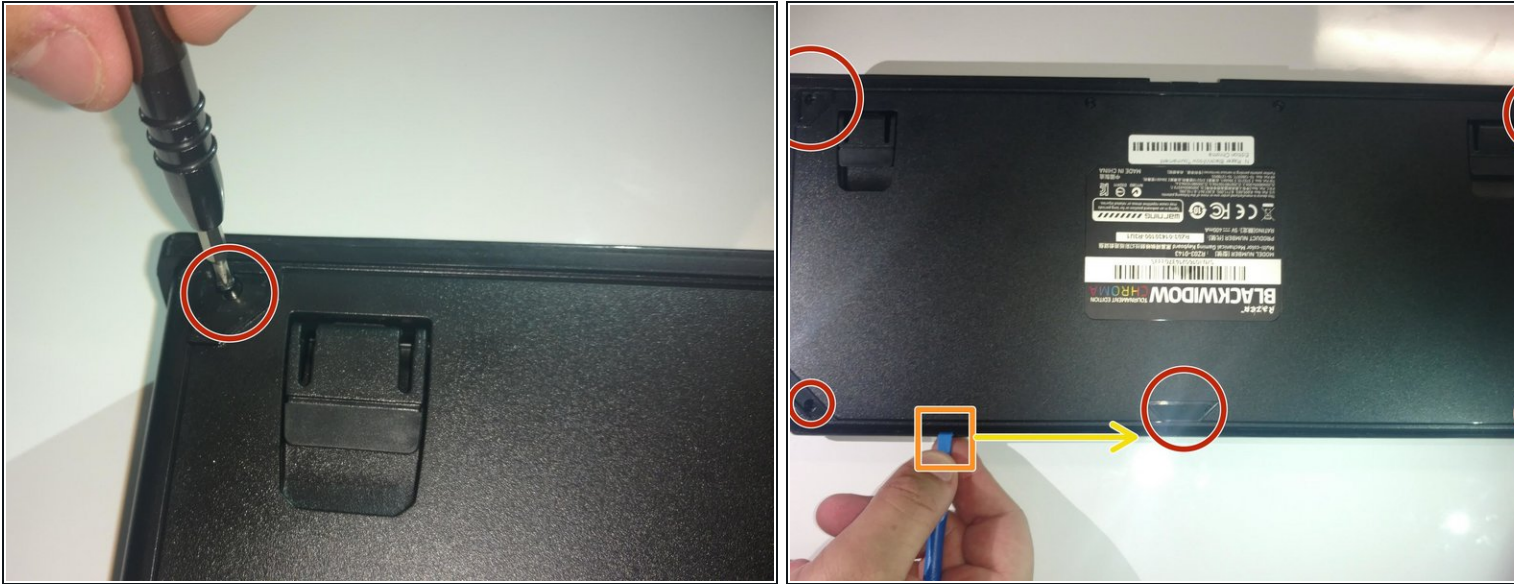
Soldering Iron 60w Hakko 503F (1)

Step 1 — Rubber Feet



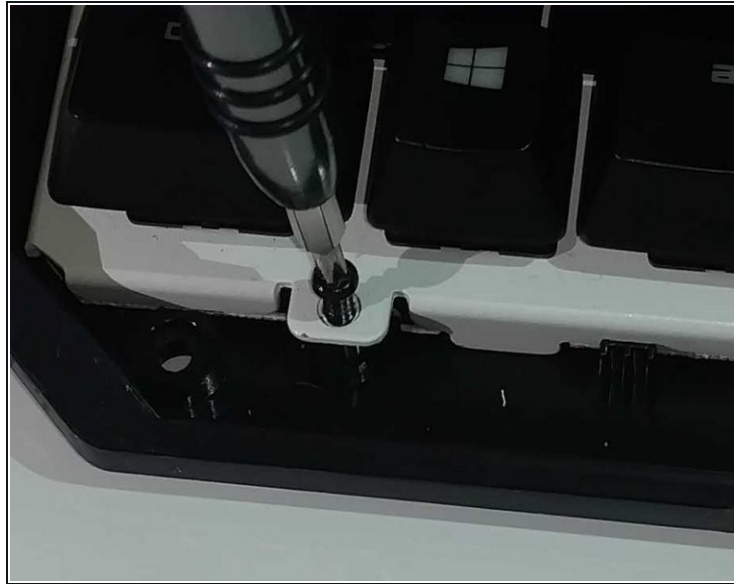
- Turn the keyboard over so that it is lying flat on its face.
- Use the iFixit opening tool to pry the rubber feet off the keyboard.

Step 2 — Front Panel



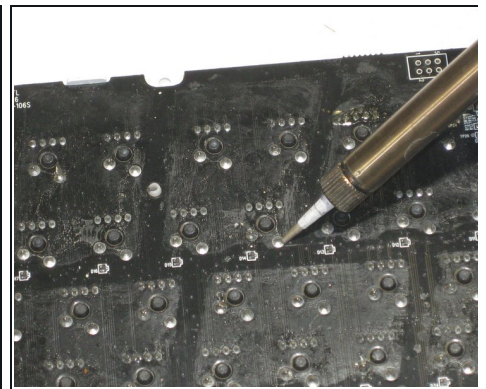
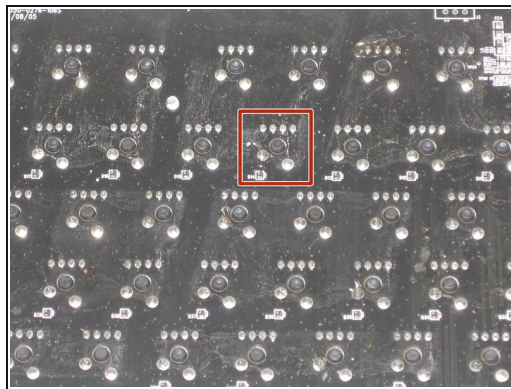
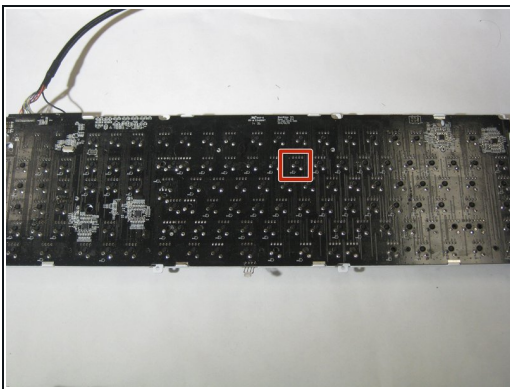
- Use a Phillips #1 screwdriver to remove the six screws on the back of the keyboard.
- Use an opening tool as a wedge between the front and back panel to pry open the front panel.
 - ⚠ If the front and back panel won't separate, **DO NOT** use excessive force. This may result in damaging the keyboard.
 - Instead, slide the opening tool across the keyboard in between the front and back panel. Go around the edges of the keyboard until the panels disconnect.
- Flip the keyboard over so the keys are facing up.
- Grabbing the left and right lips of the front panel, lift both ends up, removing the front panel.

Step 3 — Back Panel



- Use a Philips #1 Screwdriver to remove the four screws located below the keys.
- Lift the main circuit board and flip it over, placing it on its top.
- ⚠ Be cautious of the wire connected to the USB Port Board.

Step 4 — Key Switch



- De-solder the anchor of each key that you desire to replace with a soldering iron.
- For more information on soldering connections, please visit the [How to Solder and Desolder Connections guide](#).
- Remove the key switch once the de-soldering is complete.

To reassemble your device, follow these instructions in reverse order.