



MiTM Air Compressors AM1PH6508HD 2012

Regulator Replacement

Use this guide to remove or replace the adjustable regulator on a Mi-T-M Air Compressor AM1-PH65-08HD 2012.

Written By: Kyle Smith



INTRODUCTION

Use this guide to remove or replace the adjustable regulator on a Mi-T-M Air Compressor AM1-PH65-08HD 2012.



TOOLS:

- [Adjustable Wrench](#) (1)
- [3/4" Wrench](#) (1)
- [11/16" open-ended wrench](#) (1)
- [1/2" Wrench](#) (1)
- [1/2" Socket Wrench](#) (1)
- [3/16" Hex Key](#) (1)
- [7/16" Wrench](#) (1)



PARTS:

- [Mi-T-M Adjustable Regulator- 150 Psi 22-0231](#) (1)

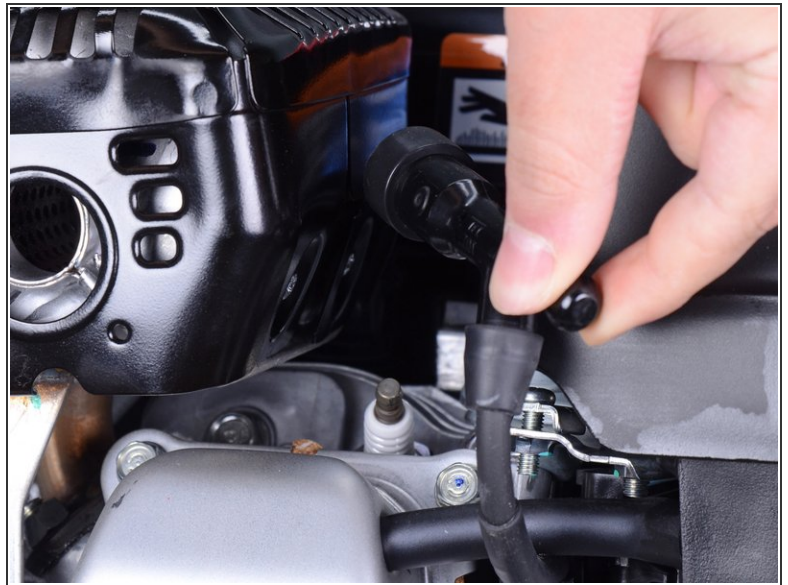
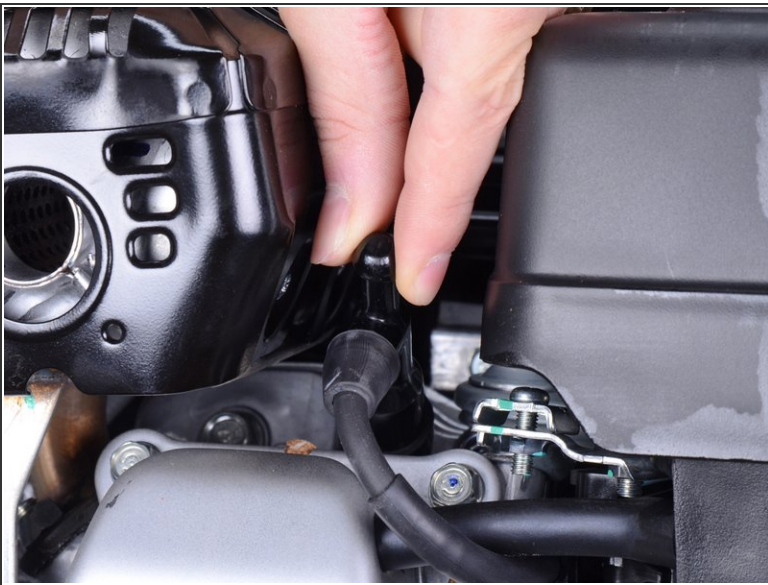
Step 1 — Turn off the engine



⚠ Before you begin, make sure the device is powered down and cool to the touch.

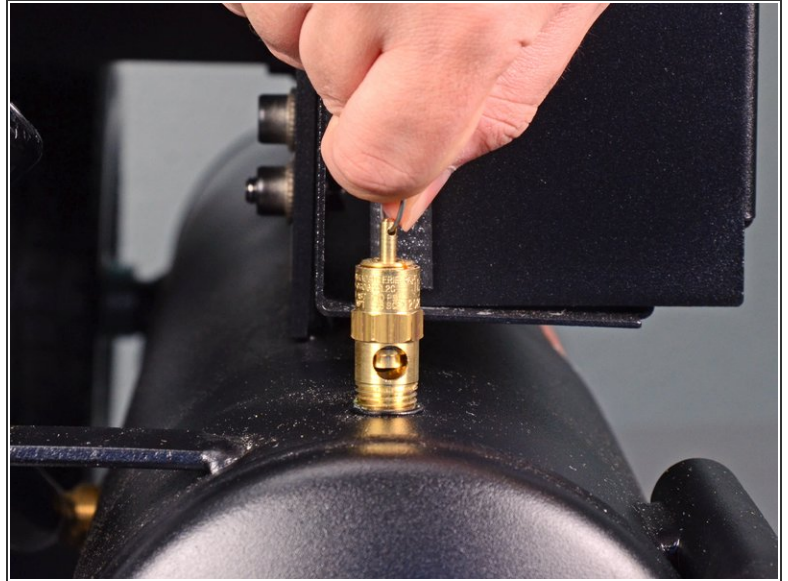
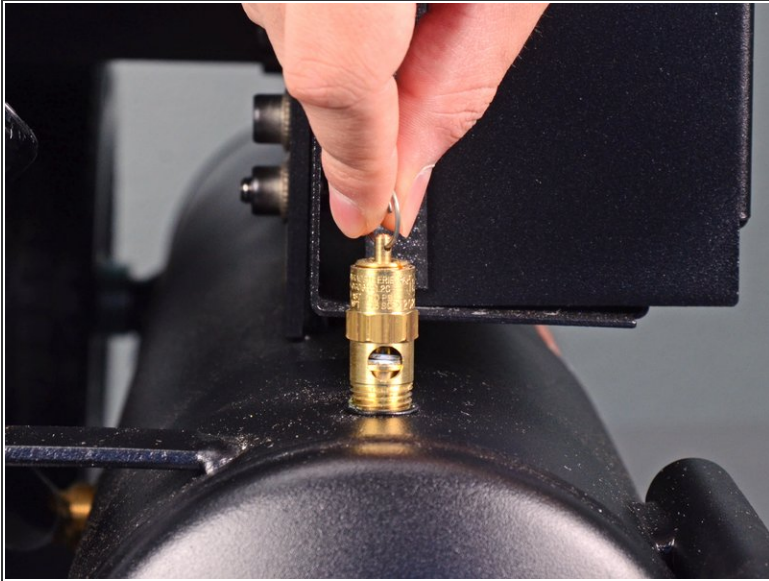
- Flip the engine switch into the **OFF** position.

Step 2 — Disconnect the spark plug



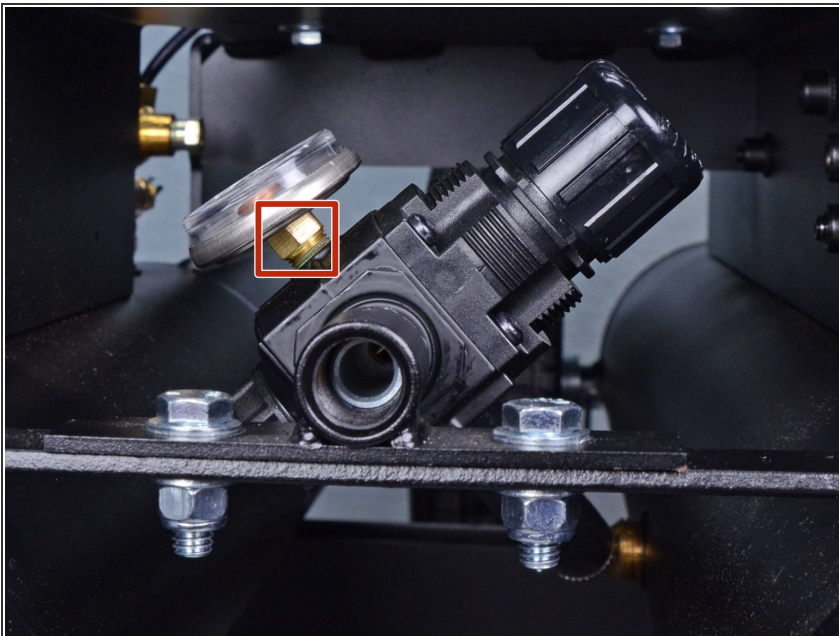
- Grab the plastic housing at the end of the spark plug wire.
- Pull firmly to disconnect the wire from the spark plug.

Step 3 — Drain the compressor tank



- Pull the ring on the safety relief valve away from the compressor tank to drain the air from the compressor.
- ⓘ Ensure the tank is completely depressurized before starting repairs.

Step 4 — Remove the pressure gauge



- Use a 7/16 inch wrench to loosen the nut securing the pressure gauge to the regulator housing.

Step 5



- Remove the pressure gauge.

Step 6 — Loosen the adjustable regulator



- Fit an adjustable wrench to the black metal square on the hose side of the regulator.
- Use a 3/4 inch wrench to hold the nipple in place.

Step 7



- Push the adjustable wrench to break the regulator loose from the threaded nipple.

Step 8



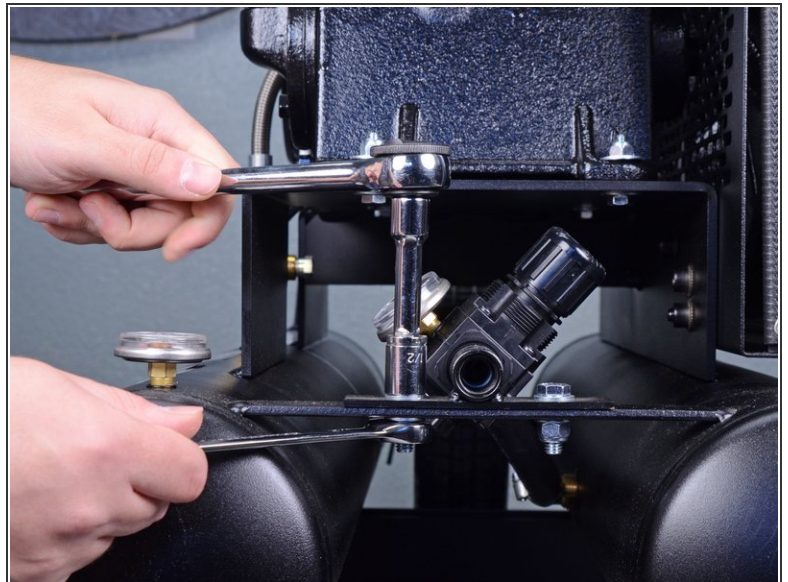
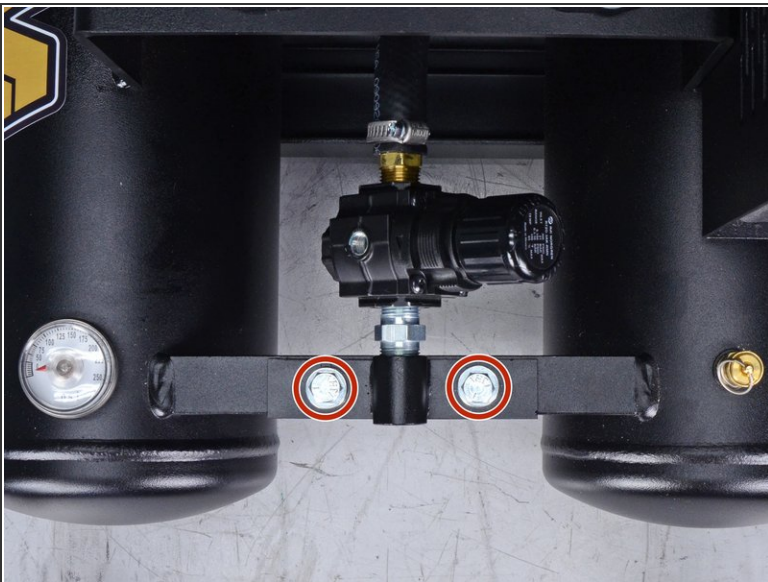
- Fit an adjustable wrench to the black metal square on the bracket side of the regulator.
- Use an 11/16 inch wrench to hold the hose barb.

Step 9



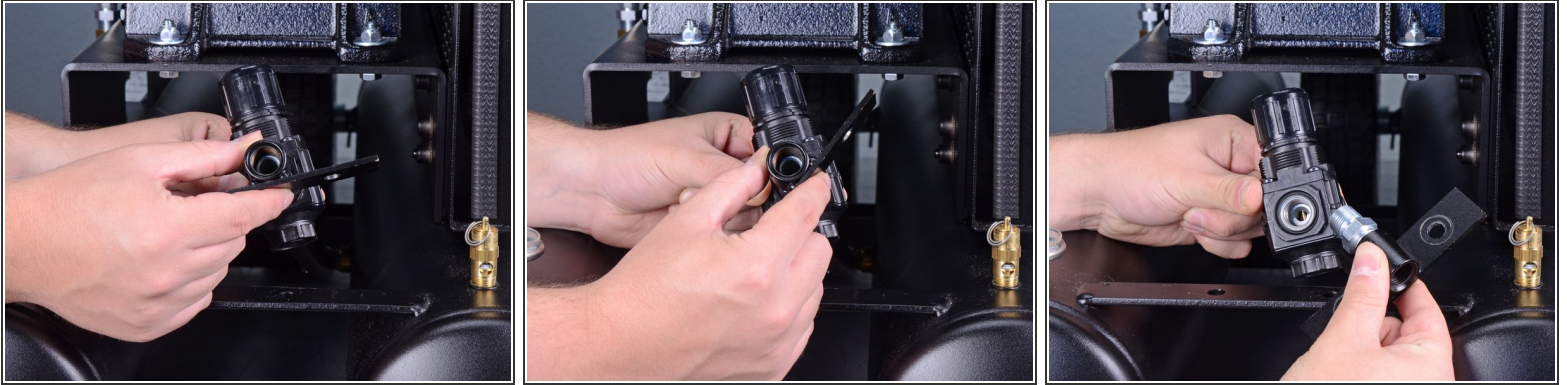
- Break the hose barb fitting loose from the regulator.

Step 10 — Remove the two regulator mounting bracket bolts



- Use a 1/2 inch socket and wrench to remove the two bolts and accompanying nuts securing the regulator mounting bracket to the frame.
- ⓘ Don't forget to remove the two washers as well.

Step 11 — Unscrew the regulator mounting bracket



- Lift the regulator off of the mounting bracket.
- Use your fingers to unscrew and remove the mounting bracket from the regulator.

Step 12 — Unscrew the adjustable regulator



- Unscrew the adjustable regulator from the hose barb.
- Remove the regulator.

Step 13 — Remove the regulator plug



- Use a 3/16 inch hex key to remove the plug from the regulator.
- Only the regulator remains.

To reassemble your device, follow these instructions in reverse order.