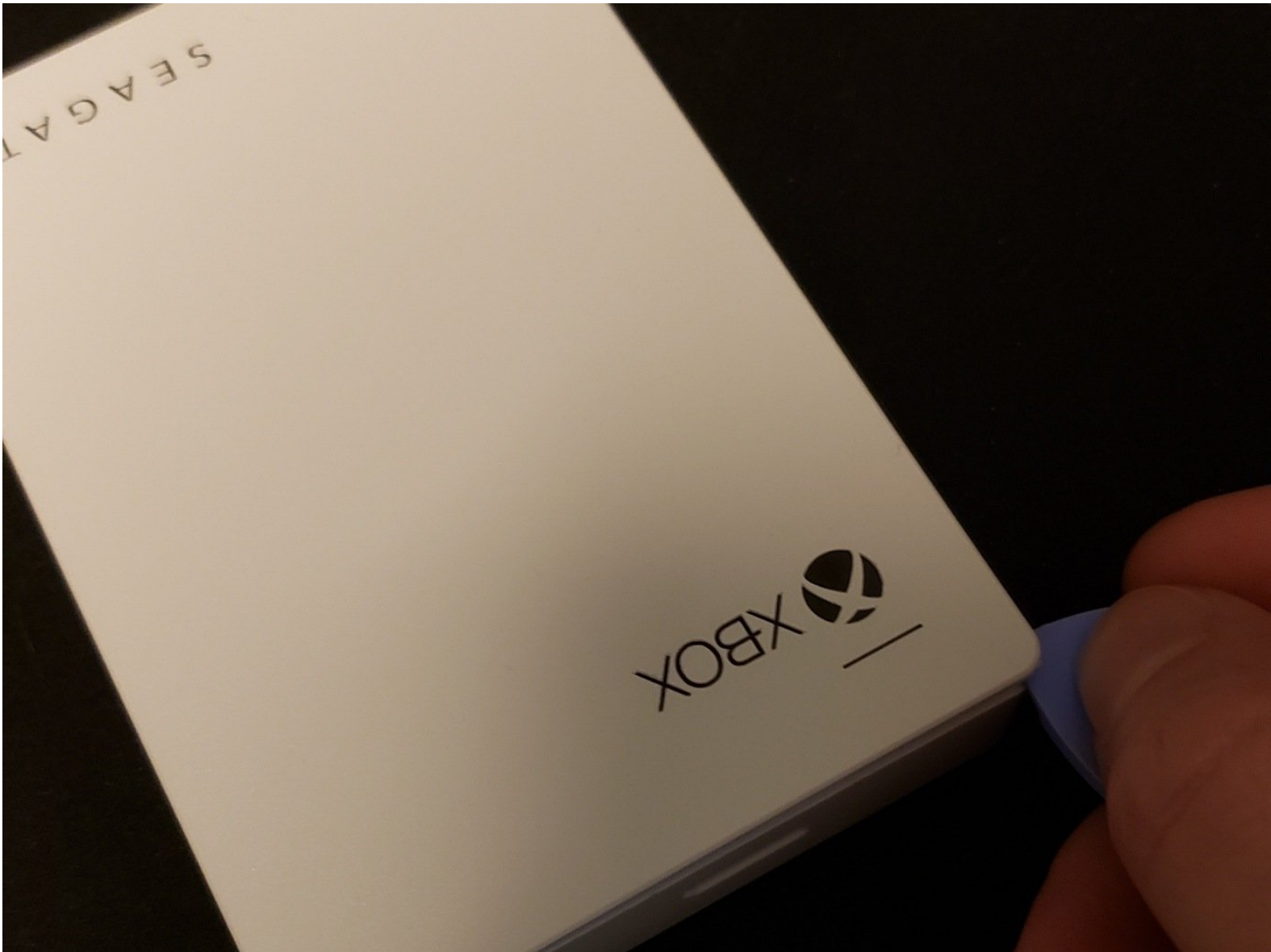




Game Drive for Xbox Teardown

Teardown of Game Drive for Xbox

Written By: Dan

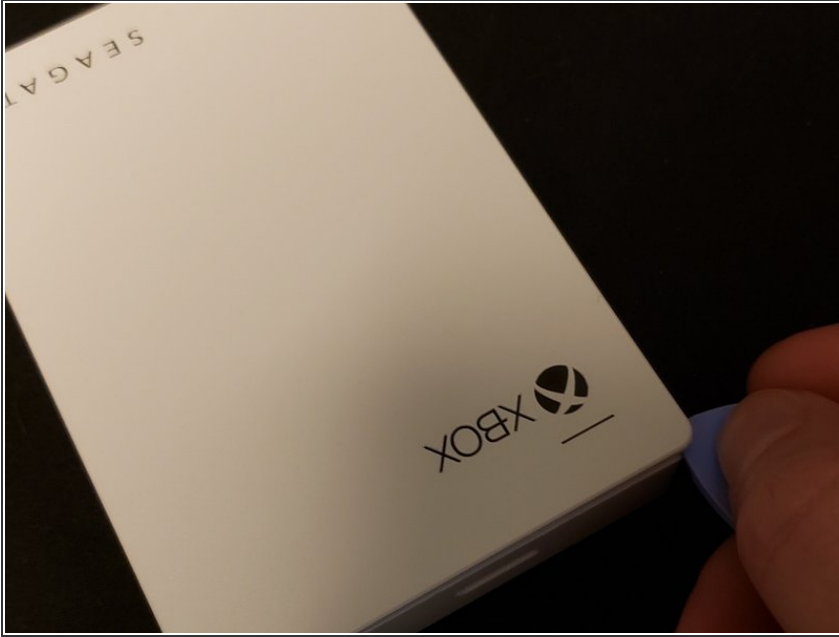




TOOLS:

- [iFixit Opening Tools](#) (1)
-

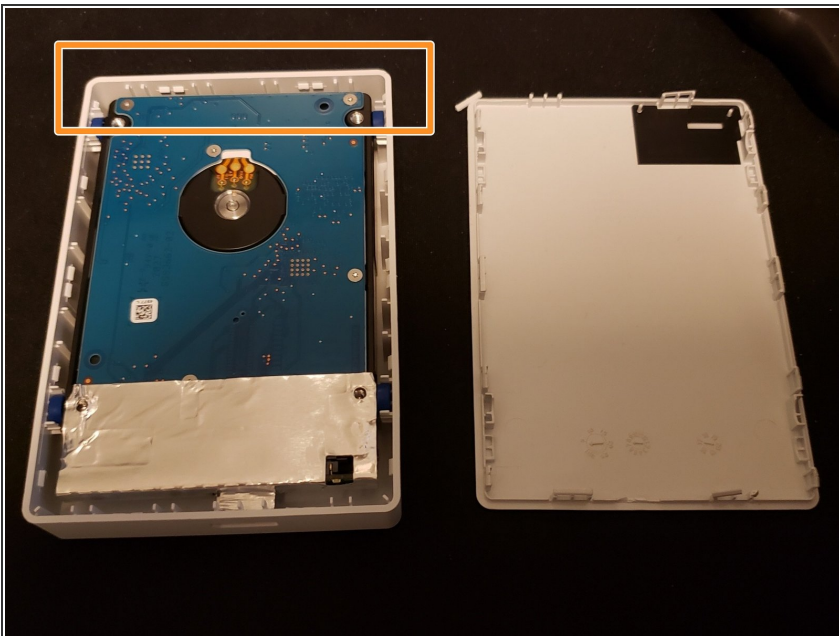
Step 1 — Open the Cover



- Using a Pry tool, remove the cover

⚠ This could break the plastic pins that keep the enclosure sealed. Nothing tape can't fix.

Step 2 — Remove the Cover



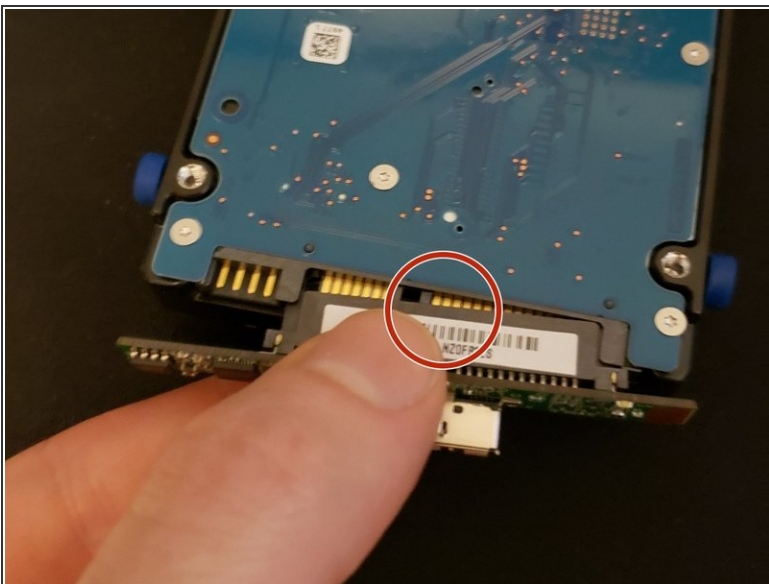
- Take the cover off the drive
- Lifting from the end without the USB port. Remove the drive from the case.

Step 3 — Remove the Shielding



- Carefully peel away the shielding

Step 4 — Remove the USB Adapter



- With careful pressure slowly pull the adapter off the drive.
- ☑ Keep the adapter, it is SATA to USB 3.2 Gen 1, they have value

⚠ Don't pull from the end, you will likely break the adapter

