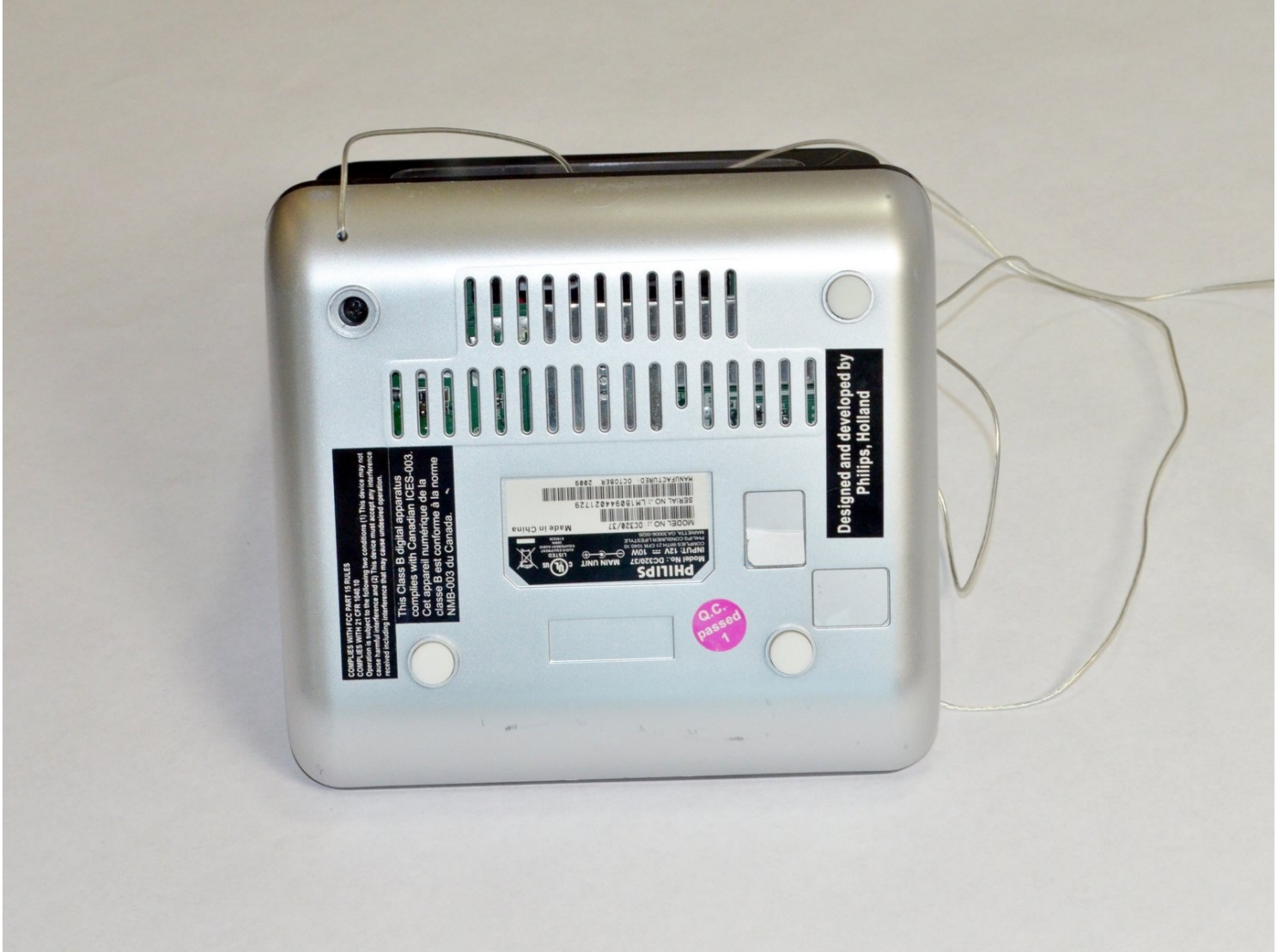




Removing Philips DC320 37 Bottom Panel

Welcome to the DC320 Repair Guide, your...

Written By: Greg Lane



INTRODUCTION

Welcome to the DC320 Repair Guide, your comprehensive resource for restoring power and performance to your electronic device. Whether you're a seasoned technician or a DIY enthusiast, this guide will walk you through the steps to address common issues and revitalize your DC320.

TOOLS:

Phillips #2 Screwdriver (1)

Spudger (1)

Step 1 — Docking entertainment system



- Pry off the four white feet with the pointed end of the spudger

Step 2



- Gently unscrew the four 15.5 mm Phillips #2 screws that hold the bottom panel to the dock.

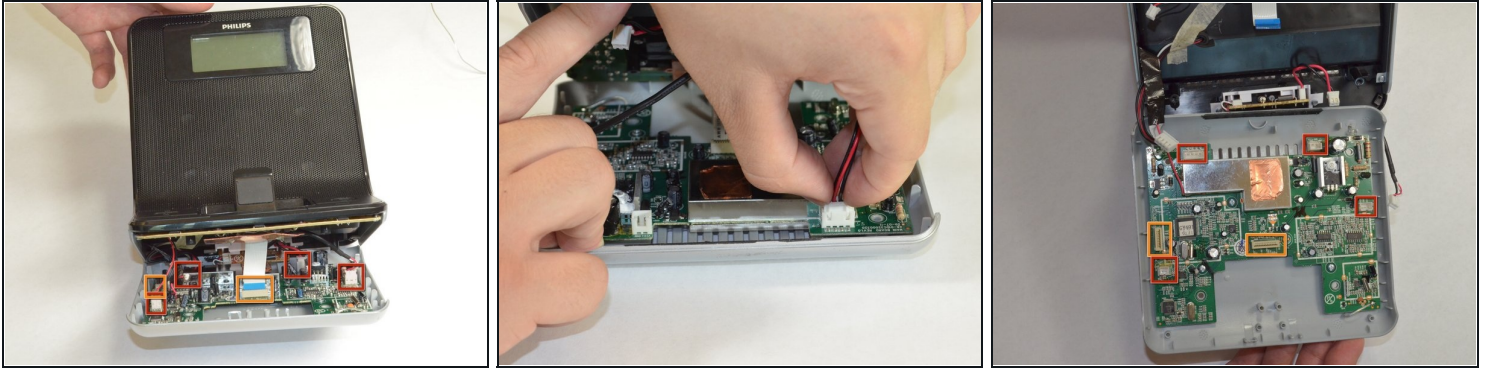
Step 3



- Use the flat end of the spudger to pry the lid off from the two connectors holding it to the body of the dock.

⚠ The connectors on the panel are fragile and may break.

Step 4



- Carefully pull up and out the four electrical connectors and two ribbon connectors that connect the bottom panel to the dock.
 - Electrical Connectors
 - Ribbon Connectors

⚠ The cables do not have a lot of slack in them. Be careful not to break the connectors.

⚠ One wire is soldered onto the bottom panel. Be careful not to break this bond.

To reassemble your device, follow these instructions in reverse order.