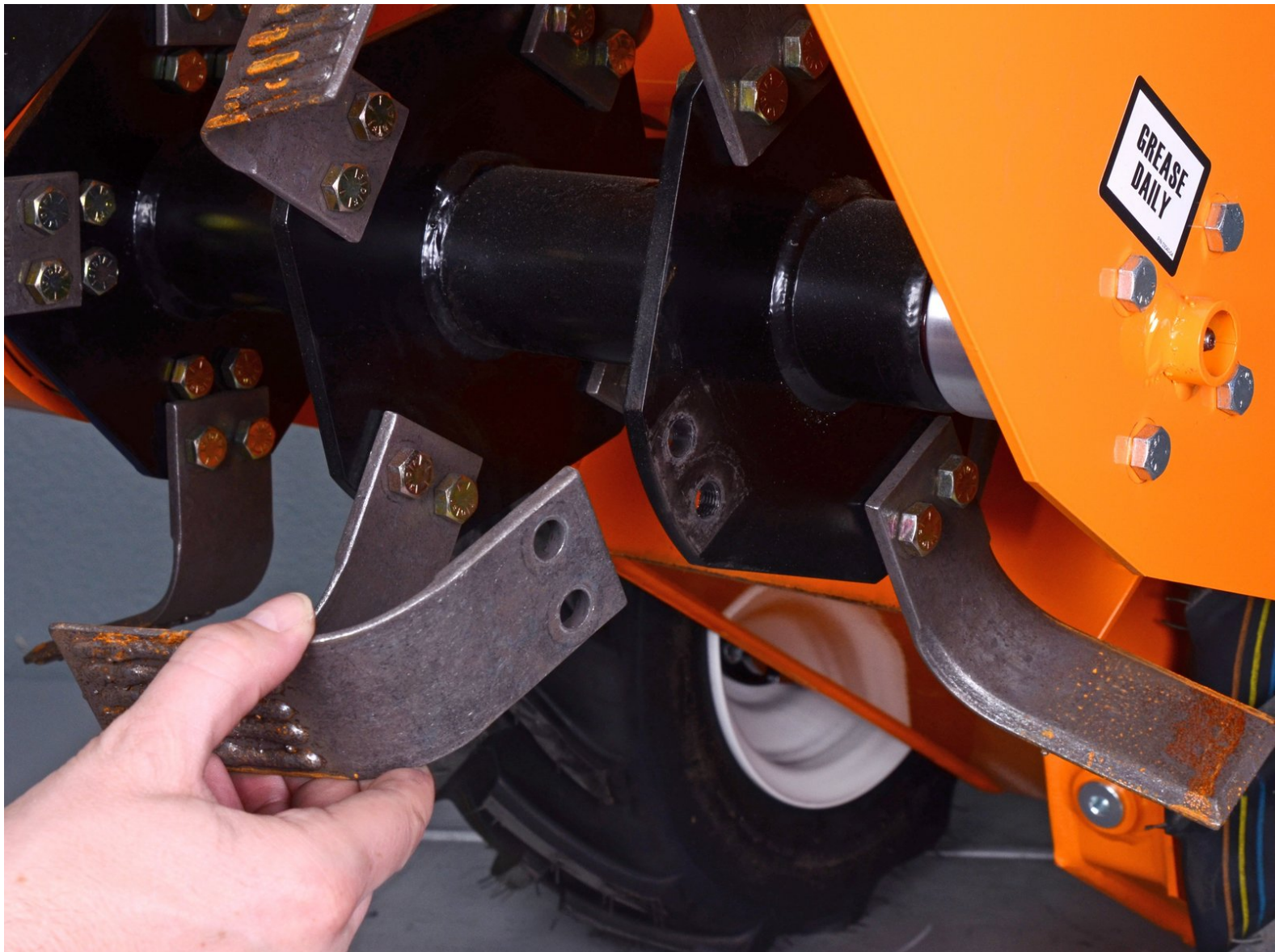




# Barreto Tillers E1320HTRLR 2016 Tine Replacement

Guide to remove and replace the reversible tines on the Barreto Tiller E1320 2016.

Written By: Carsten Frauenheim



## INTRODUCTION

This guide shows how to remove and replace the reversible tines on the Barreto Tiller E1320 2016.

Tines should be changed as often as needed. Use **Loctite 271** on tine bolt threads to prevent them from loosening.



### TOOLS:

- [3/8" Drive Ratchet](#) (1)
- [11/16" open-ended wrench](#) (1)
- [5/8" Socket](#) (1)




### PARTS:

- [Barreto Tine, Reversible 03196R1](#) (1)
- [Barreto Hh Cap Screw, 7/16-20 Nf X 1 G8 Zinc 05061](#) (2)



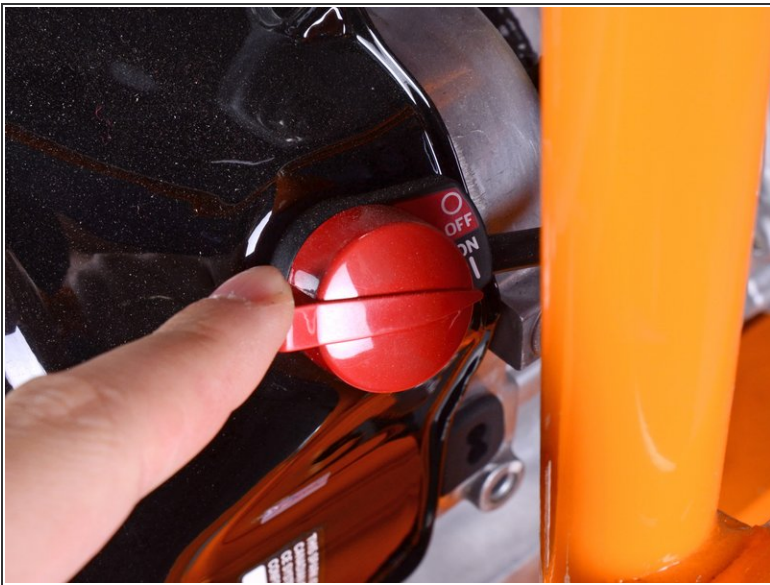
## Step 1 — Disconnect the spark plug wire



 Before you begin, ensure that the engine is powered down and cool to the touch.

- Grab the plastic housing at the end of the spark plug wire and pull firmly to disconnect it.

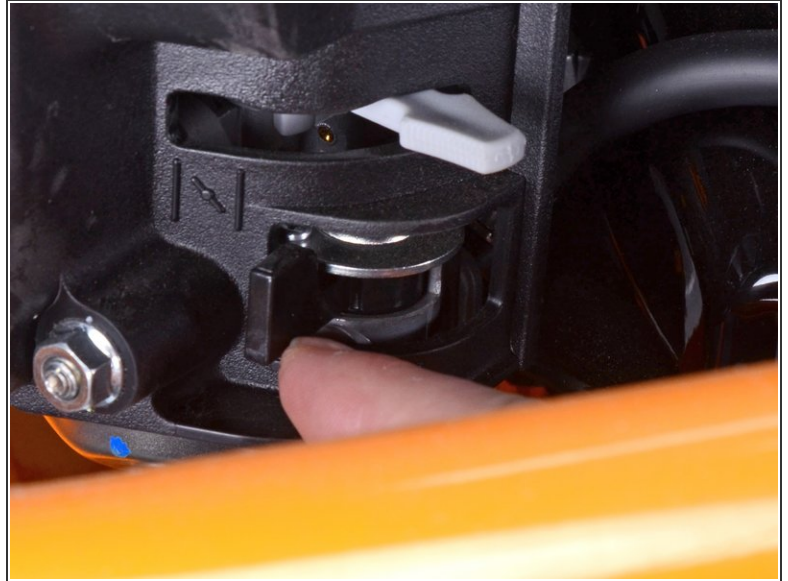
## Step 2 — Flip the engine switch to the off position



- Flip the red engine ON/OFF switch to the **OFF** position.



### Step 3 — Close the fuel valve



- Flip the fuel valve lever to the **OFF** position.

### Step 4 — Turn off the ignition



- Flip the ignition switch to the **OFF** position.
- Ensure the wheel drive control lever is set to the **neutral** position.

## Step 5 — Allow the wheels to freewheel



- Pull the locking pin out and rotate it 90° to unlock the right wheel from the hub.
- Repeat for the left wheel.

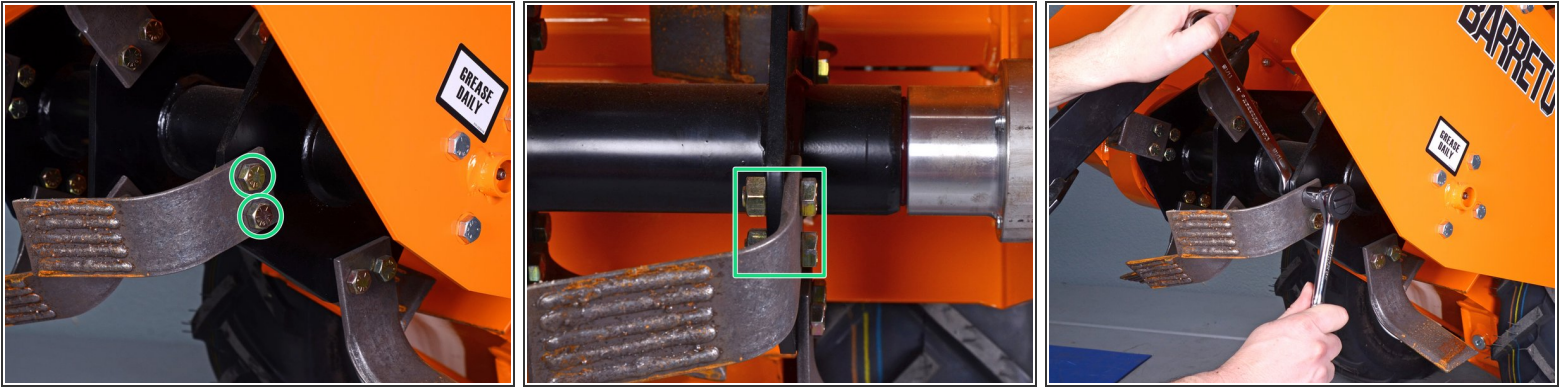
## Step 6 — Add wheel chocks



- Insert wheel chocks underneath each wheel to keep the device stationary during disassembly.

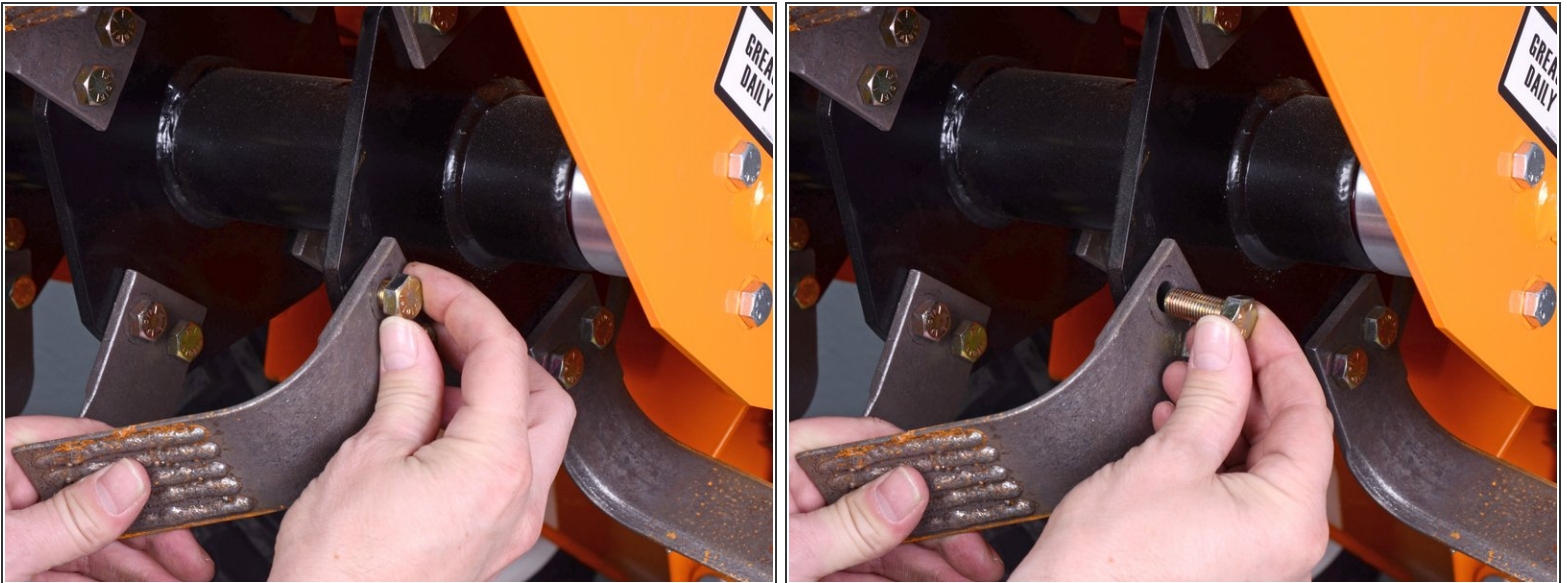


## Step 7 — Loosen the tine bolts



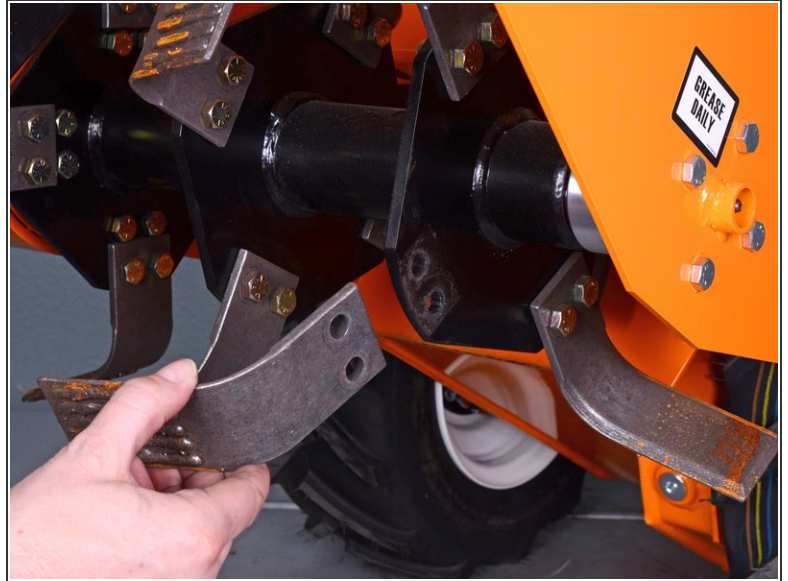
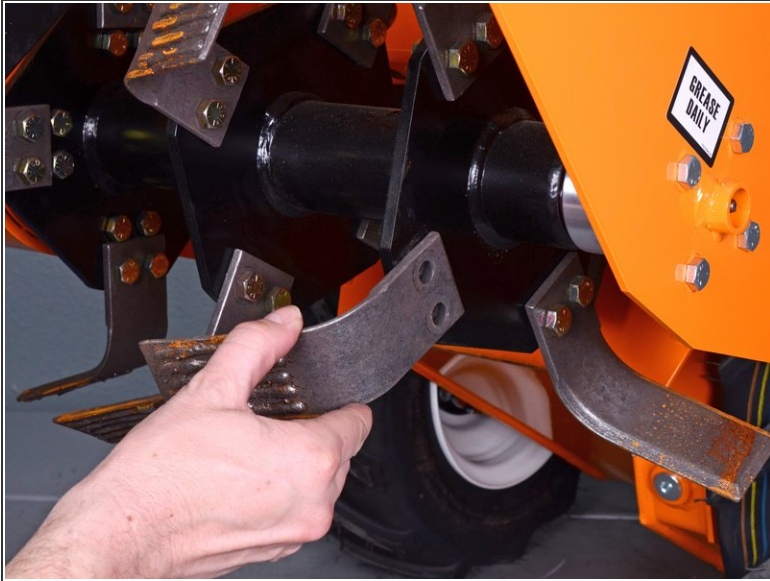
- Use a 5/8 inch socket with an 11/16 inch wrench to loosen the two 5/8 inch bolts and two 11/16 inch nuts securing the tine to the tine shaft.
- Remove the two tine nuts.

## Step 8 — Remove the tine bolts



- Remove the two bolts holding the tine to the tine shaft.
  - ☑ During reassembly, use **Loctite 271** on tine bolt threads to prevent them from loosening.

## Step 9 — Remove the tine



- Remove the tine.
- Repeat this procedure for each tine you need to replace.
- ⓘ Keep track of each tine's orientation.

To reassemble your device, follow these instructions in reverse order.