



Google Pixel 4a Screen Replacement

This repair guide was authored by the iFixit...

Written By: Sam Omiotek



INTRODUCTION

This repair guide was authored by the iFixit staff and hasn't been endorsed by Google. Learn more about our repair guides [here](#).

Follow this guide to replace a broken or cracked screen on a Pixel 4a.

The Pixel 4a's unreinforced display panel is fragile. Pay special attention to the warnings in the opening procedure if you are reusing the screen.



TOOLS:

[iOpener](#) (1)
[iFixit Opening Picks \(Set of 6\)](#) (1)
[Suction Handle](#) (1)
[T3 Torx Screwdriver](#) (1)
[Tweezers](#) (1)
[Spudger](#) (1)



PARTS:

[Google Pixel 4a Screen - Genuine](#) (1)
[Google Pixel 4a Display Adhesive - Genuine](#) (1)
[Tesa 61395 Tape](#) (1)

Step 1 — Precautionary notes



- ① You will need to pry the screen up to remove it from the phone. Read the following notes carefully before proceeding.
- Take note of the two seams on the edge of the phone:
 - *Screen seam*: This seam separates the screen from the rest of the phone. **This is where you should pry.**
 - *Frame seam*: This is where the plastic frame meets the back cover. It is held in place by screws. **Do not pry at this seam.**
- Before you begin, note the following areas on the screen:
 - *Screen flex cable*: Do not insert the opening pick deeper than instructed or you risk damaging this cable.
 - ⚠ **Note the orange ribbon cable under the lower-right corner of the screen, which is susceptible to damage if your opening pick is pressed into it. Only insert your opening pick as little as is necessary to separate the screen adhesive.**
 - *Adhesive perimeter*: Prying beyond this narrow perimeter without angling the pick will damage the OLED panel.

Step 2 — Heat the right edge of the screen



- [Apply a heated iOpener](#) to the right edge of the display for one minute to soften the adhesive.
- ⓘ A hair dryer, heat gun, or hot plate may also be used, but be careful not to overheat the phone—the display and internal battery are both susceptible to heat damage.

Step 3 — Insert an opening pick



- ⓘ If your display is badly cracked, covering it with a layer of clear packing tape may allow the suction cup to adhere. Alternatively, very strong tape may be used instead of the suction cup. If all else fails, you can superglue the suction cup to the broken screen.
- Place a suction cup as close to the right edge of the screen as possible.
- Lift the suction cup with a strong steady force.
- Insert the tip of an opening pick into the *screen seam* **no more than 1 mm**.

Step 4 — Guide the opening pick under the OLED panel



ⓘ This step shows how to insert the pick without damaging the OLED panel. Do this before beginning to slice the adhesive.

- With the pick **1 mm** into the gap, pivot the pick upwards to a steep angle.
- At a steep angle, carefully push the pick into the gap about 1/4 inch (6 mm). The pick should slide in **below** the OLED panel.

⚠ **Stop if you feel the point of the pick hitting a ridge.** The pick may be pressing against the edge of the OLED panel. Angle the pick and try again.

Step 5 — Cut the adhesive

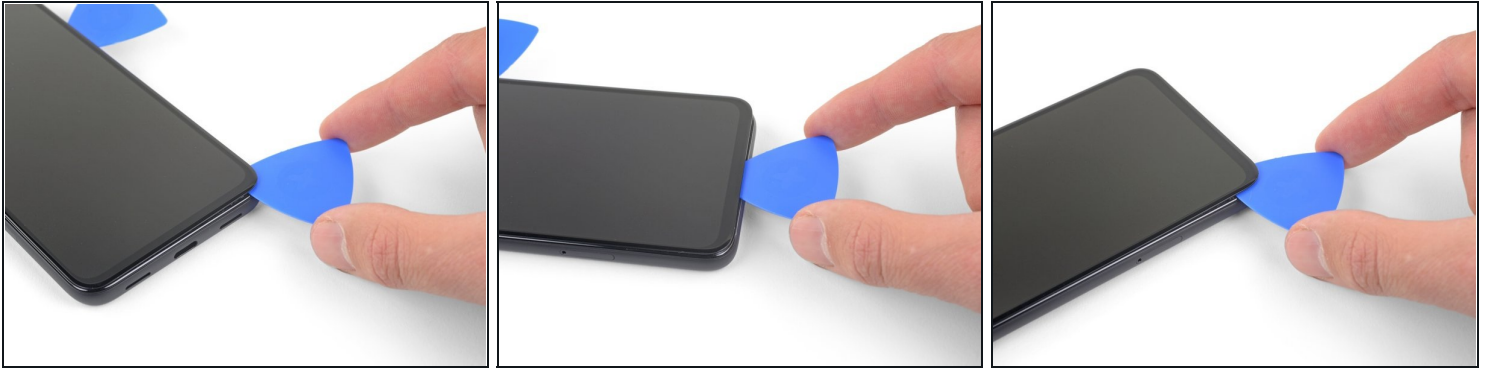


- Slide the pick along the right edge of the screen to cut the adhesive.

⚠ **Do not insert the pick more than 1/4 inch (6 mm) or you may damage the screen's flex cable.**

- Leave the pick in the top right corner to prevent the adhesive from re-sealing.

Step 6



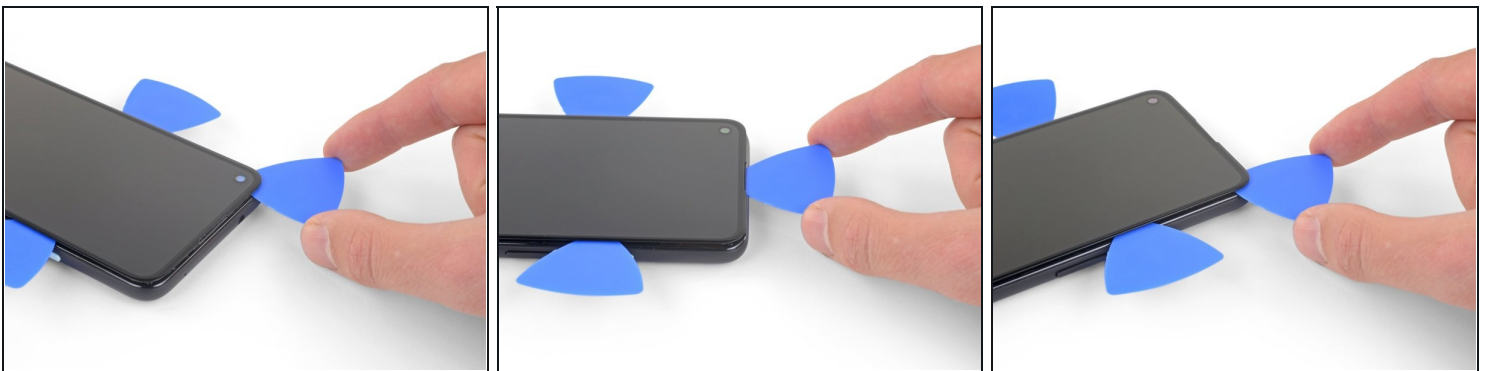
- ① The screen adhesive is very weak and you should not need to re-apply heat. If the screen does feel hard to slice, apply heat to the difficult area for one minute and try again.
- Insert another opening pick into the right edge of the phone at an angle where a gap has already formed to prevent damage to the OLED panel.
- Slide the opening pick around the bottom of the phone to cut the adhesive.
- ⚠ There is a delicate cable under the bottom-right corner of the screen. If you feel your opening pick snag on anything, pull it out and try again. Make sure your pick is angled downward and only inserted as little as is necessary to separate the adhesive (no more than 2 mm deep).
- Leave the pick inserted along the bottom edge to prevent the adhesive from resealing.

Step 7



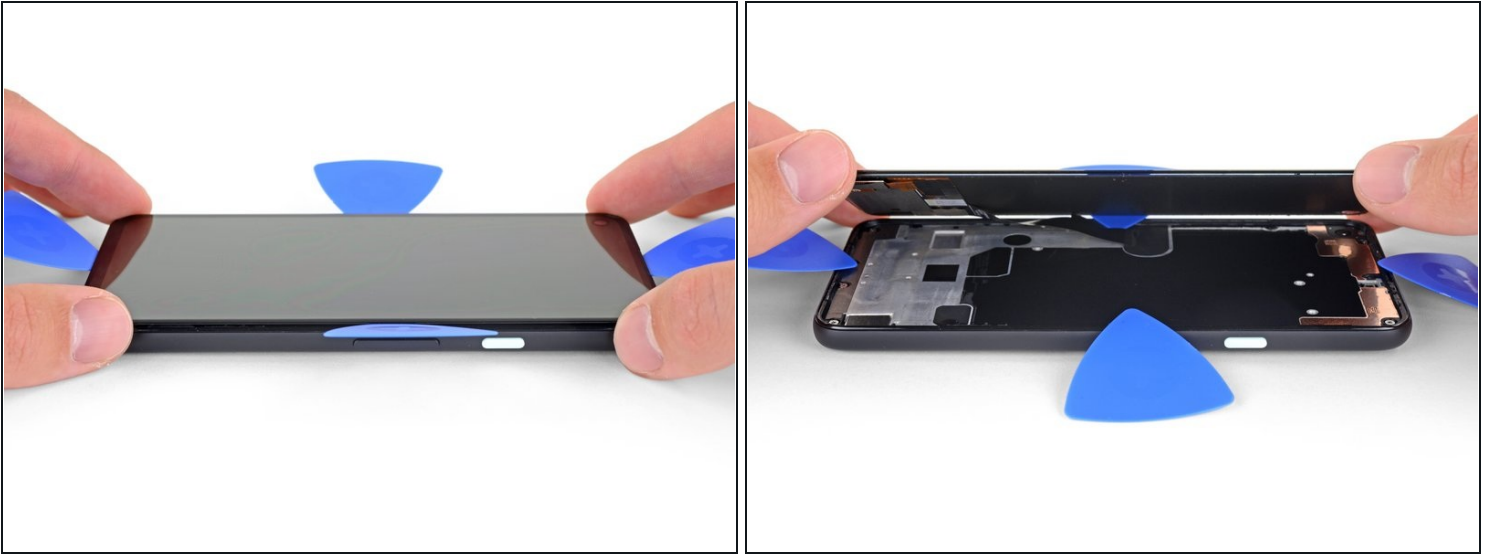
- Insert another opening pick into the bottom edge of the phone at an angle where a gap has already formed to prevent damage to the OLED panel.
- Use the pick to slice through the left edge of the phone.
 - ⓘ If the screen feels hard to slice, heat the left edge for one minute and try again.
- Leave the pick inserted along the left edge of the phone to prevent the adhesive from re-sealing.

Step 8



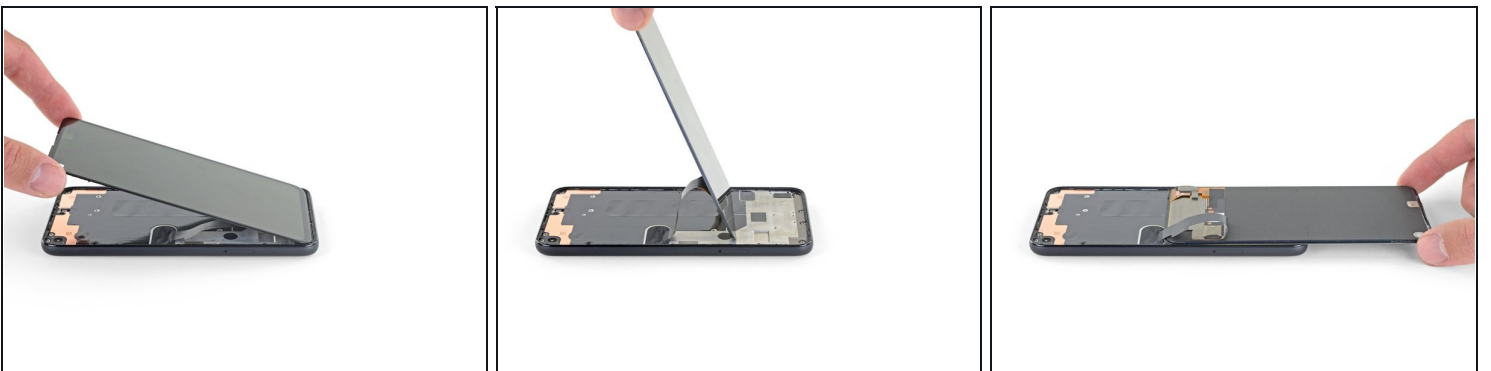
- ⓘ There's a mesh covering the earpiece speaker on the top edge of the screen. If you don't have a replacement mesh, take care not to damage or lose this component.
- Insert another opening pick into the left edge of the phone at an angle where a gap has already formed to prevent damage to the OLED panel.
- Slide the pick around the top edge of the phone to cut the adhesive.
 - ⓘ If the screen feels hard to slice, heat the top edge for one minute and try again.

Step 9



- Once you have cut around the perimeter of the phone, carefully lift the right edge of the screen, opening the phone like a book.
- ⓘ Do not remove the screen yet.
- Use an opening pick to carefully cut through any remaining adhesive.

Step 10 — Flip the screen over



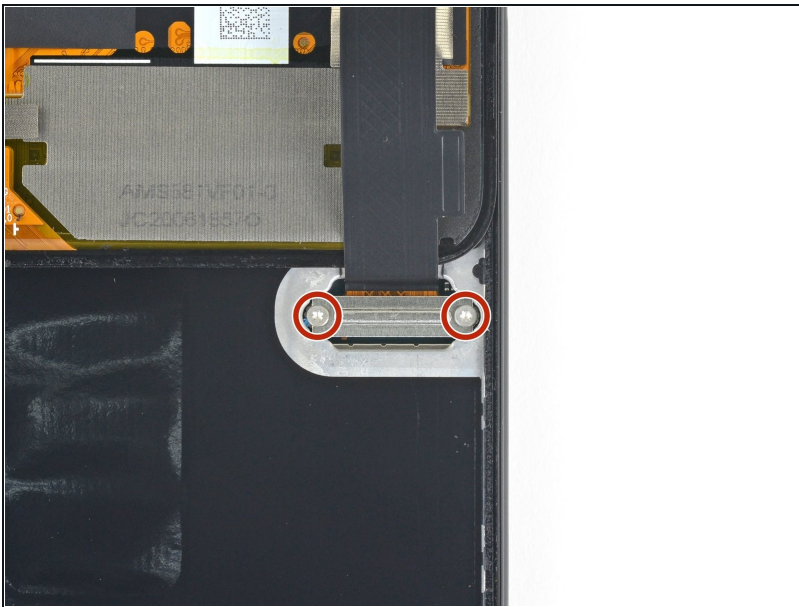
- Lift from the top edge and swing the screen over the bottom edge until you can rest it glass-side down.
- ⚠ Be careful not to put any stress on the attached ribbon cable.

Step 11 — Disconnect the display



- Use a pair of tweezers to carefully peel up the black tape covering the screen connector bracket.
- ★ If it is in good condition, you can re-use this tape during reassembly. Otherwise, replace it with a piece of electrical tape.

Step 12



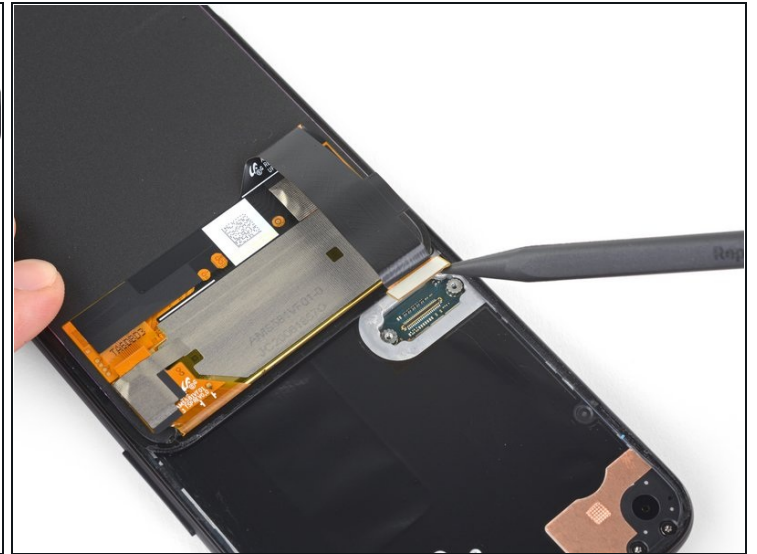
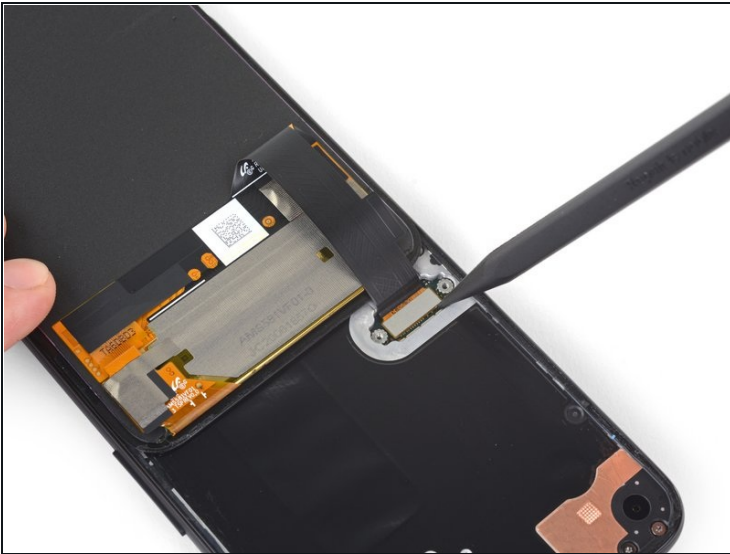
- Use a T3 Torx driver to remove the two 2.1 mm screws securing the screen connector bracket.
- ① Throughout this repair, [keep track of each screw](#) and make sure it goes back exactly where it came from.

Step 13



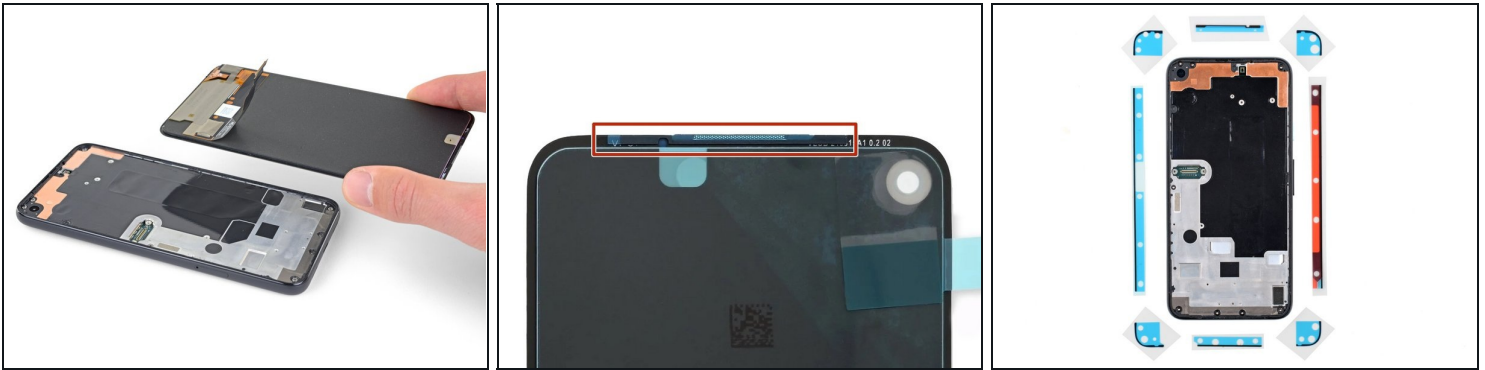
- Use a pair of tweezers to remove the screen connector bracket.
- ☑ Make sure to keep this component to reinstall it during reassembly.

Step 14



- Use the tip of a spudger to pry up and disconnect the screen flex cable.
- ☑ To re-attach [press connectors](#) like this one, carefully align and press down on one side until it clicks into place, then repeat on the other side. Do not press down on the middle. If the connector is misaligned, the pins can bend, causing permanent damage.

Step 15 — Remove the screen



- Remove the screen.

✦ To install a new screen:

- Check if your replacement screen has speaker mesh and top edge adhesive pre-installed.
 - If it does, you won't need the [top edge adhesive](#).
 - If it doesn't, remove the larger clear liner from the [top edge adhesive](#) and apply it to the **screen** (not the frame). Make sure the larger cutout lines up with the speaker mesh.
- Follow [this guide](#) to apply the custom-cut adhesive.
- ① Use the third photo as a reference to position your adhesives.

⚠ During the boot-up process after reassembly, the screen will go through a calibration sequence. Don't touch the screen during this process, as it could result in improper touch calibration and create touch issues.

Compare your new replacement part to the original part—you may need to transfer remaining components or remove adhesive backings from the new part before installing.

To reassemble your device, follow the above steps in reverse order.

Take your e-waste to an [R2 or e-Stewards certified recycler](#).

Repair didn't go as planned? Try some [basic troubleshooting](#), or ask our [Answers community](#) for help.