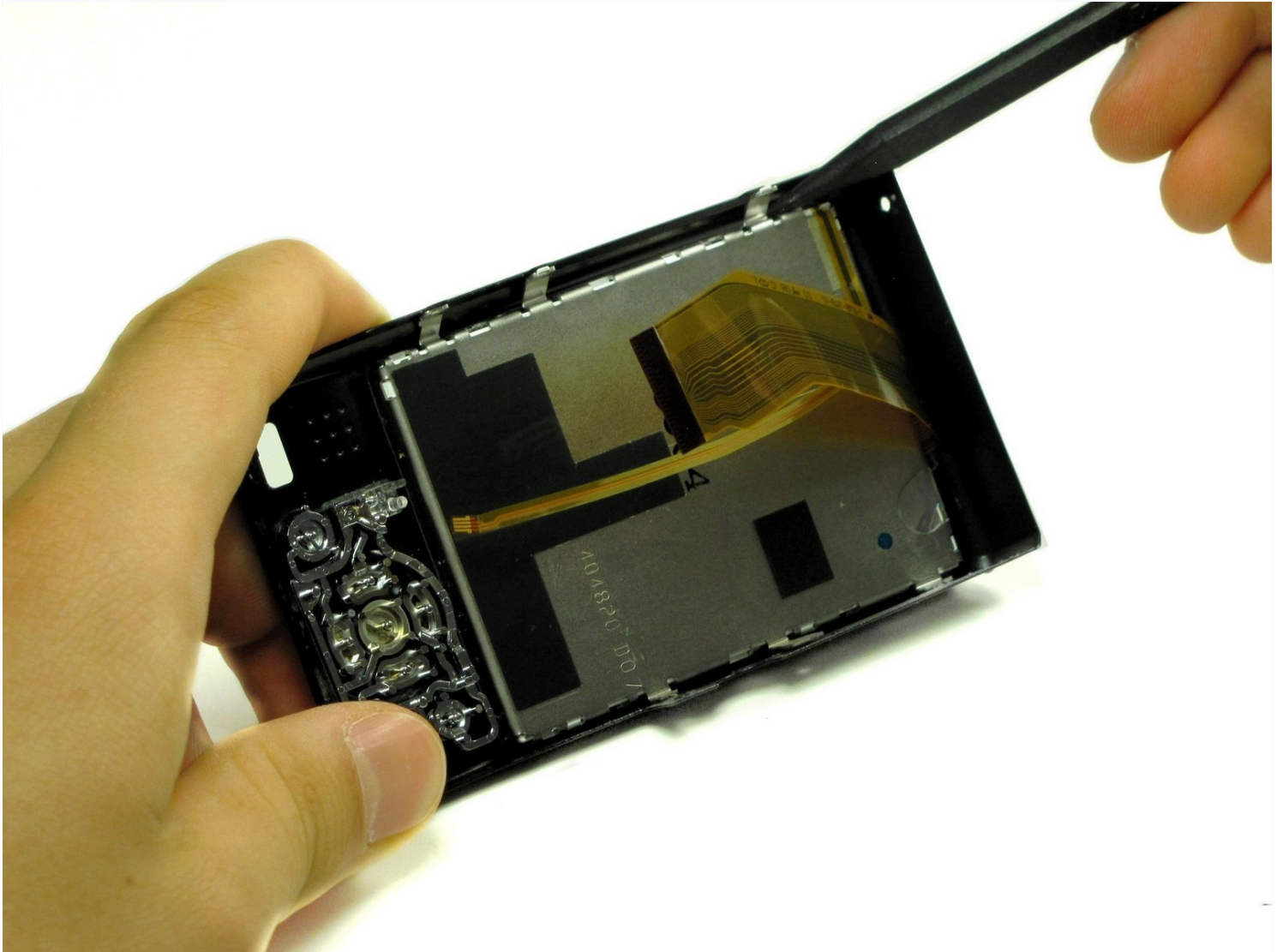




Panasonic Lumix DMC-ZS3 LCD Screen Replacement

Use this guide to replace the LCD screen which...

Written By: Juan Pablo Quinonez Weston



INTRODUCTION

Use this guide to replace the LCD screen which is housed in the camera's back cover.

TOOLS:

Phillips #00 Screwdriver (1)

Spudger (1)

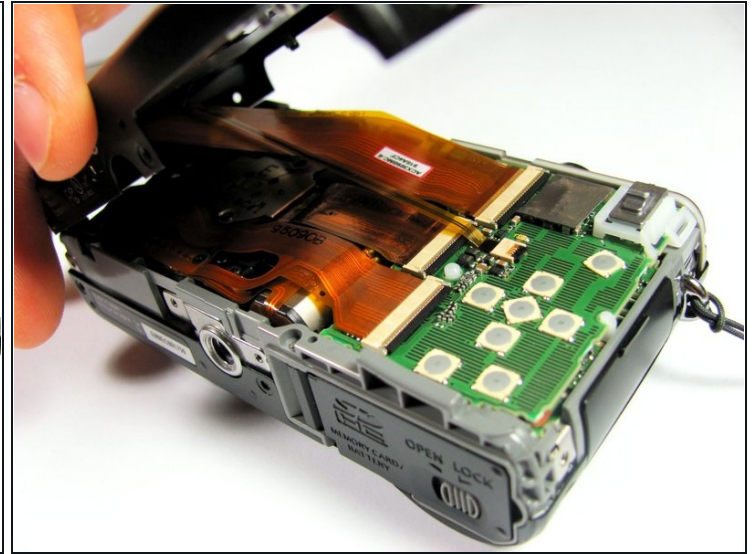
Step 1 — Back Cover



- Remove the following eleven screws securing the covers to the ZS3
 - Eleven 3 mm Phillips screws

 Using too much pressure when removing the screws may strip the screws and complicate screw removal at a later time.

Step 2



- Use the flat end of a spudger to pry apart the back cover from the rest of the unit as shown.

⚠ Be sure to carefully and slowly lift the back cover. Forcefully lifting the back cover and fully separating it at this point may ruin internal connections.

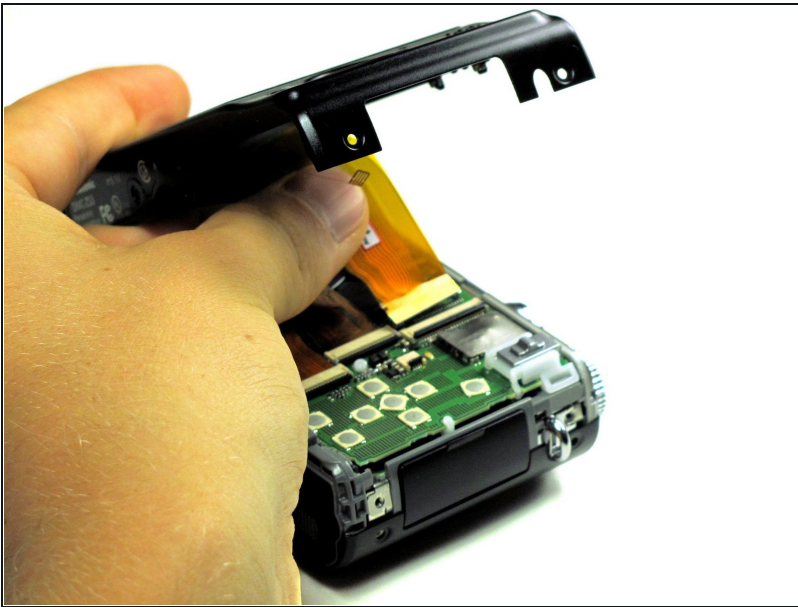
Step 3



- Using your fingernail or a spudger, flip up the ZIF locking flap on the two LCD ribbon cable sockets that connect the back cover to the rest of the unit.

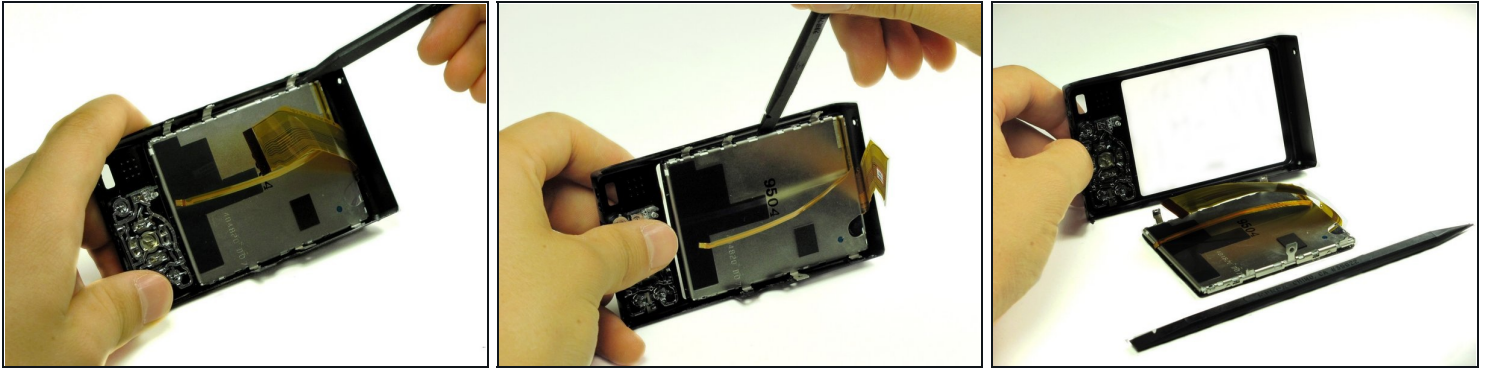
⚠ Be sure you are opening the locking tab, not pulling against the socket mounted to the board.

Step 4



- Remove the two LCD board ribbon cables out of their sockets.

Step 5 — LCD Screen



- Take the back panel and use the flat end of the spudger to pry the LCD screen from the back cover.
- ① It may be necessary to wiggle the spudger a little to loosen the adhesive that holds the LCD screen to the back cover.

⚠ Be sure not to use excessive force in order to avoid damaging the components.

To reassemble your device, follow these instructions in reverse order.