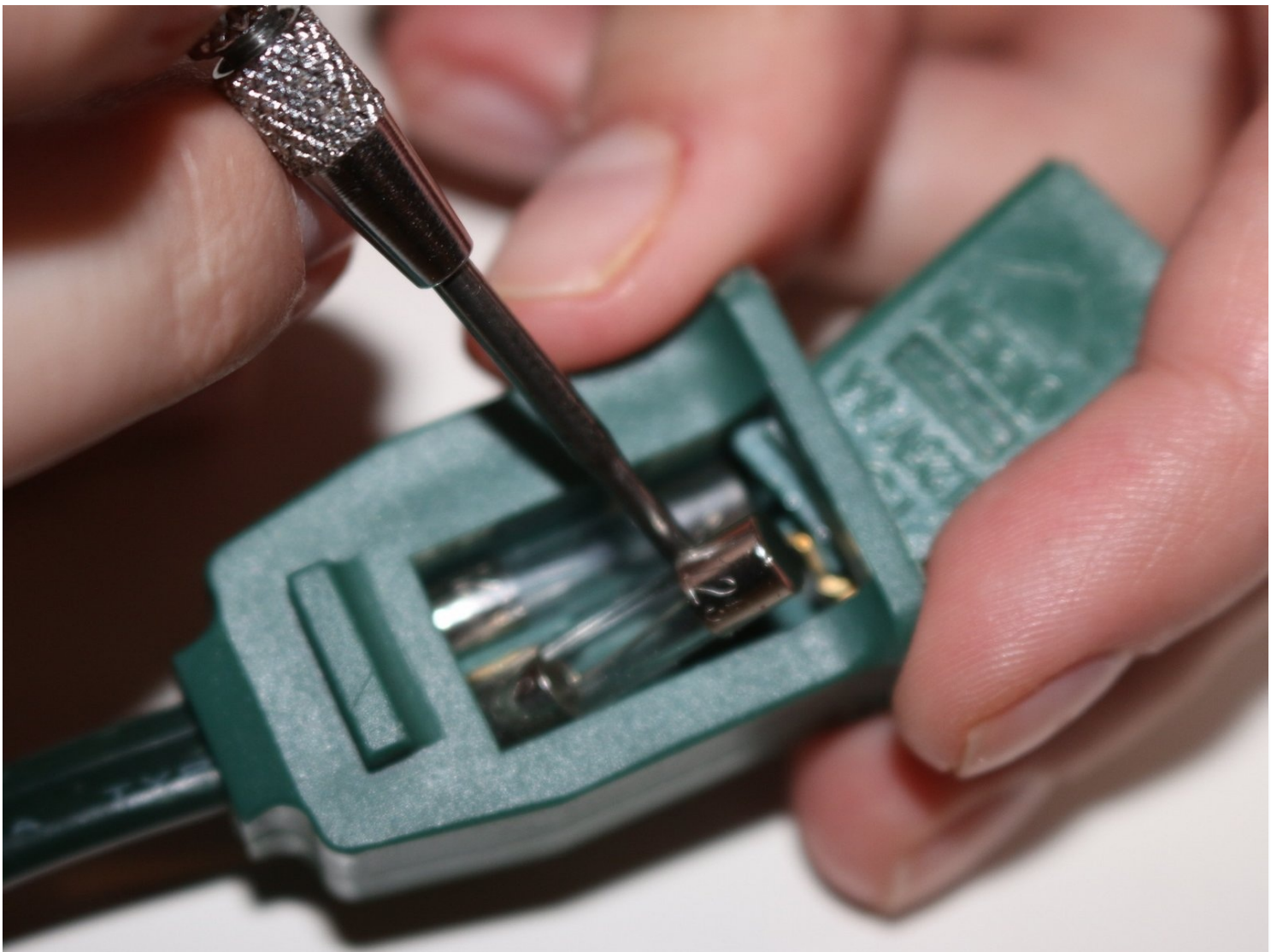




Pre-Lit Christmas Tree Incandescent Light Fuse Replacement

In this guide, you will learn how to replace...

Written By: Elizabeth Harvey



INTRODUCTION

In this guide, you will learn how to replace the fuse on a pre-lit incandescent (non-LED) Christmas tree. Incandescent lights are electric lights that have wire filaments that are heated until they glow. The filament is enclosed in a glass bulb that protects the filament from oxidation.

After using this guide, your Christmas tree should light up again. Be sure to unplug the tree from power while removing the fuse and use extra caution when handling the fuse, as it can be fragile.

Before beginning this guide, make sure you know how to use a continuity tester properly, and that you know how to read it. In addition, be sure to double check that you have unplugged the tree from power and do not have any liquids near you while working. Liquids and anything not needed for this fix pose a hazard that can be very dangerous to you.

TOOLS:

[T-3686: Continuity Tester](#) (1)

[Flathead 3/32" or 2.5 mm Screwdriver](#) (1)

[Christmas light function tester](#) (1)

Step 1 — Fuse



 **Plug in the tree.**

- Use a Christmas light function tester to check the fuse on a light that is not bright.

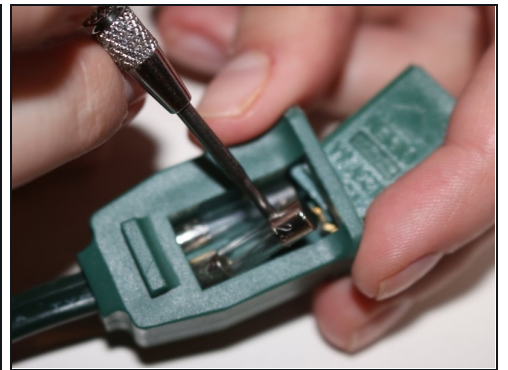
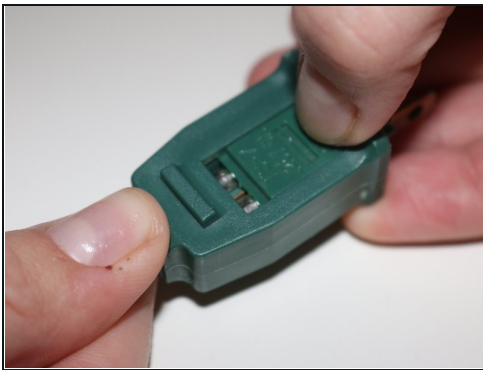
 The red light on the function tester will not light up if the fuse is dead.

Step 2



⚠️ Unplug the tree from the outlet.

Step 3



- Open the fuse cover, then use a small flathead screwdriver or spudger to carefully remove the fuse.

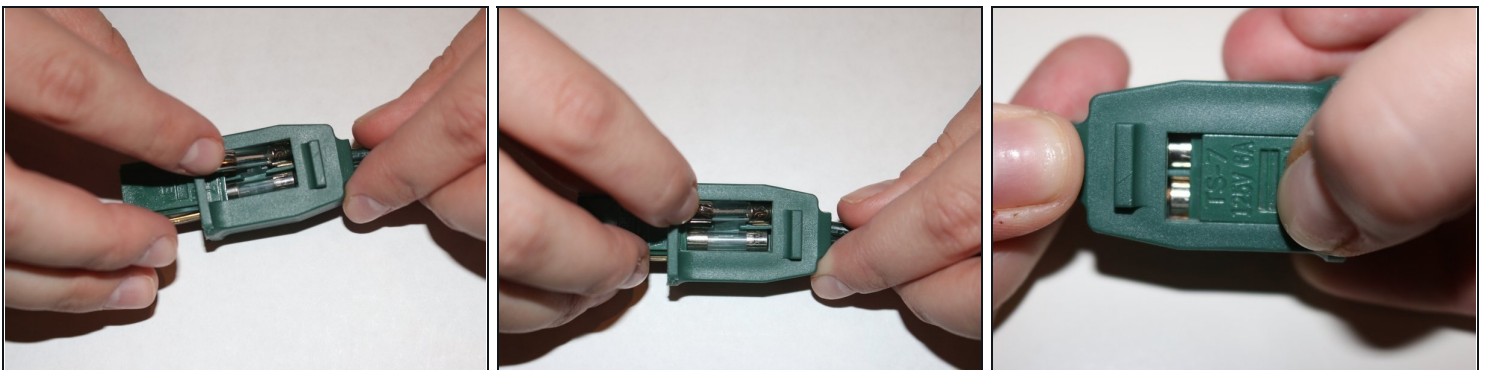
Step 4



- Using a continuity tester and the fuse, place both tips of the continuity tester on either side of the fuse.

① The top light should light up red if the fuse is in working condition. If no light appears, repeat this step with a new fuse.

Step 5



- Carefully insert the working fuse back into the tree plug, and put the cover on.

Step 6



⚠ Plug the tree back into the outlet.

Step 7



- Using the Christmas light function tester, go back to the same spot you initially checked. If the red light appears, you have successfully replaced the fuse!
- ⓘ The red light will appear whether the bulb itself is working or not.

Thank you for using this guide!