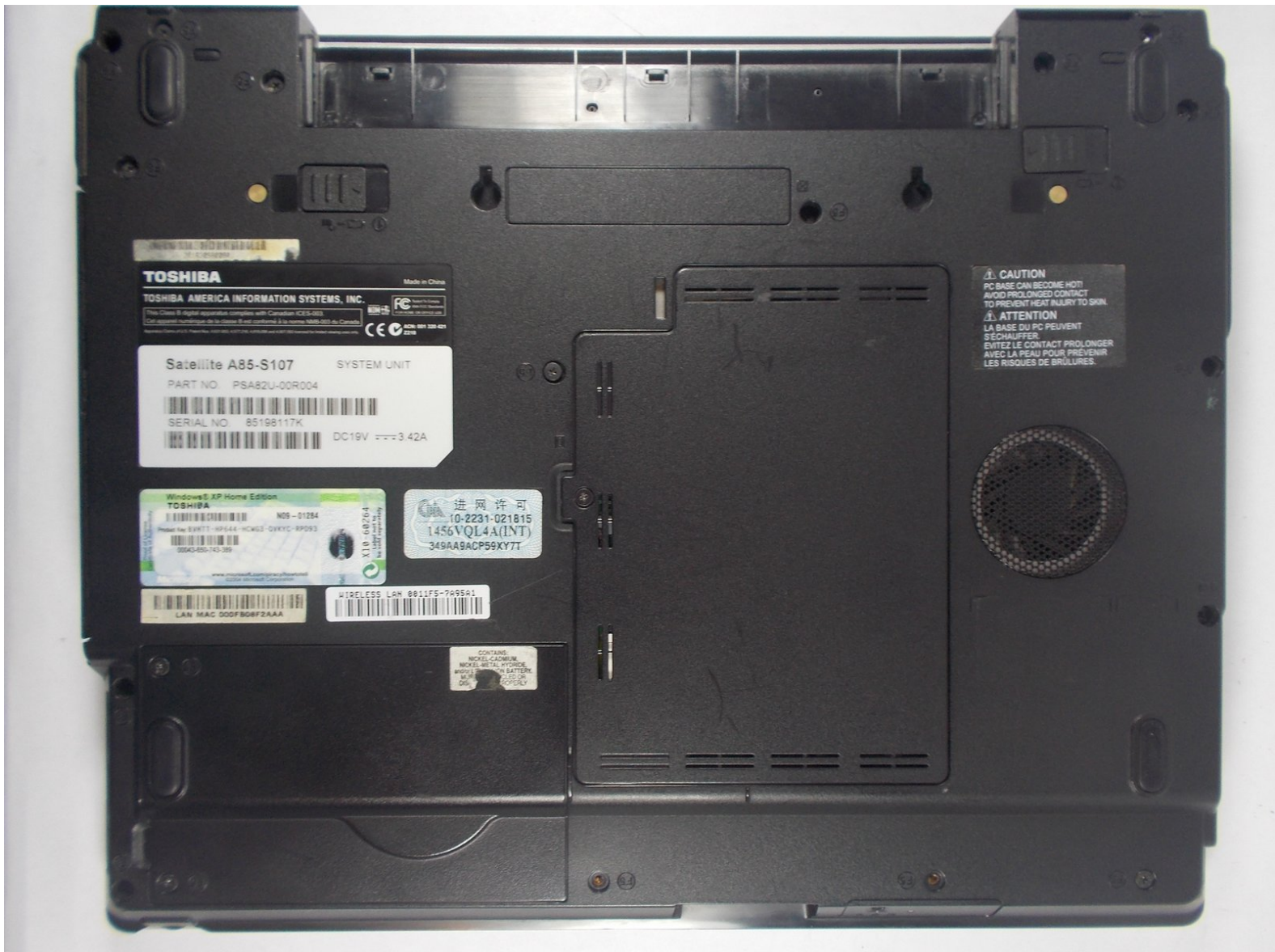




# Toshiba Satellite A85-S107 15" Hard Drive Replacement

Use this guide to replace or install the hard...

Written By: Travis



# INTRODUCTION

Use this guide to replace or install the hard drive in your Toshiba laptop.



## TOOLS:

- [iFixit Opening Tool](#) (1)
- [Phillips #0 Screwdriver](#) (1)



## PARTS:

- [2.5 inch Hard Drive](#) (1)

## Step 1 — Battery



- Power off the laptop.

**⚠** Disconnect the power cable from the laptop. If you do not, electric shock may result.

## Step 2



- Flip the laptop over and orient it such that the battery faces towards you and the front faces away from you as shown in the diagram.
- Unlock the battery by sliding the tab shown to the right
- ⓘ This tab will latch into place.

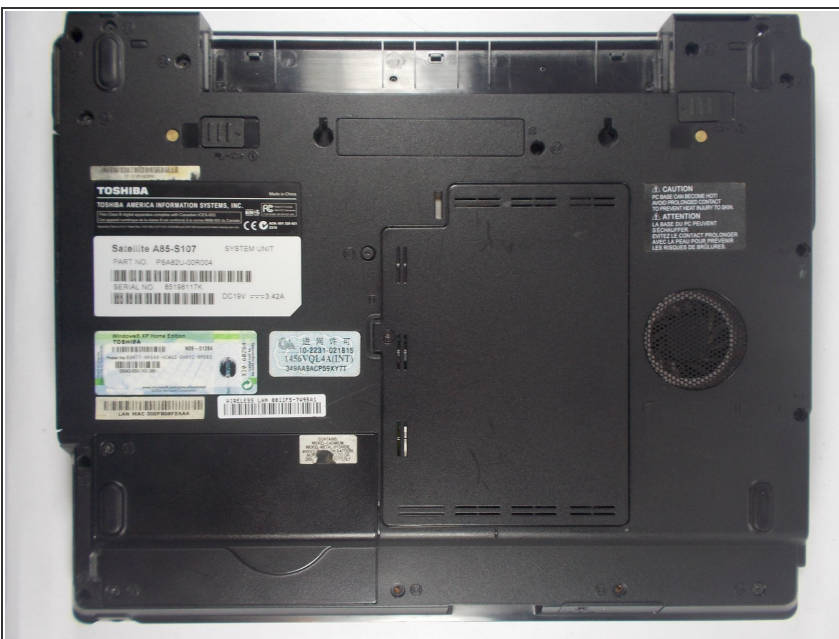


## Step 3



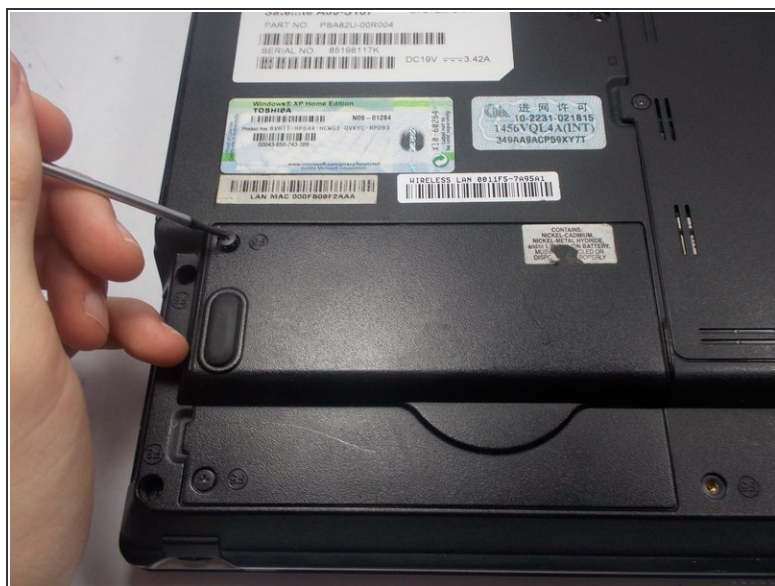
- Slide the tab shown to the left and remain holding it.
  - ⓘ This tab does not lock into place like in the first step.
- Place your thumb on the grips of the battery as shown.
  - While holding onto the grips, pull the battery towards you and away from the laptop.

## Step 4 — Hard Drive



- Flip the computer around so the battery is facing away from you.

## Step 5



- Locate 5mm Philips #0 screw on hard drive cover.
- Remove these two 5mm Phillips #0 screws using the Phillips #0 Screwdriver.

## Step 6



- Insert the plastic opening tool into the tab shown and lift up to remove the lower left plate.

⚠ If the hard drive panel is difficult to remove and feels like it is going to break, DO NOT force it. Check to confirm that all the screws are removed before attempting again.

## Step 7



- Use plastic opening tool to lift hard drive out of case.
- Lift the left side of the hard drive and slide it out towards the left.
- ⓘ We do not have all the required parts for this guide.

To reassemble your device, follow these instructions in reverse order.