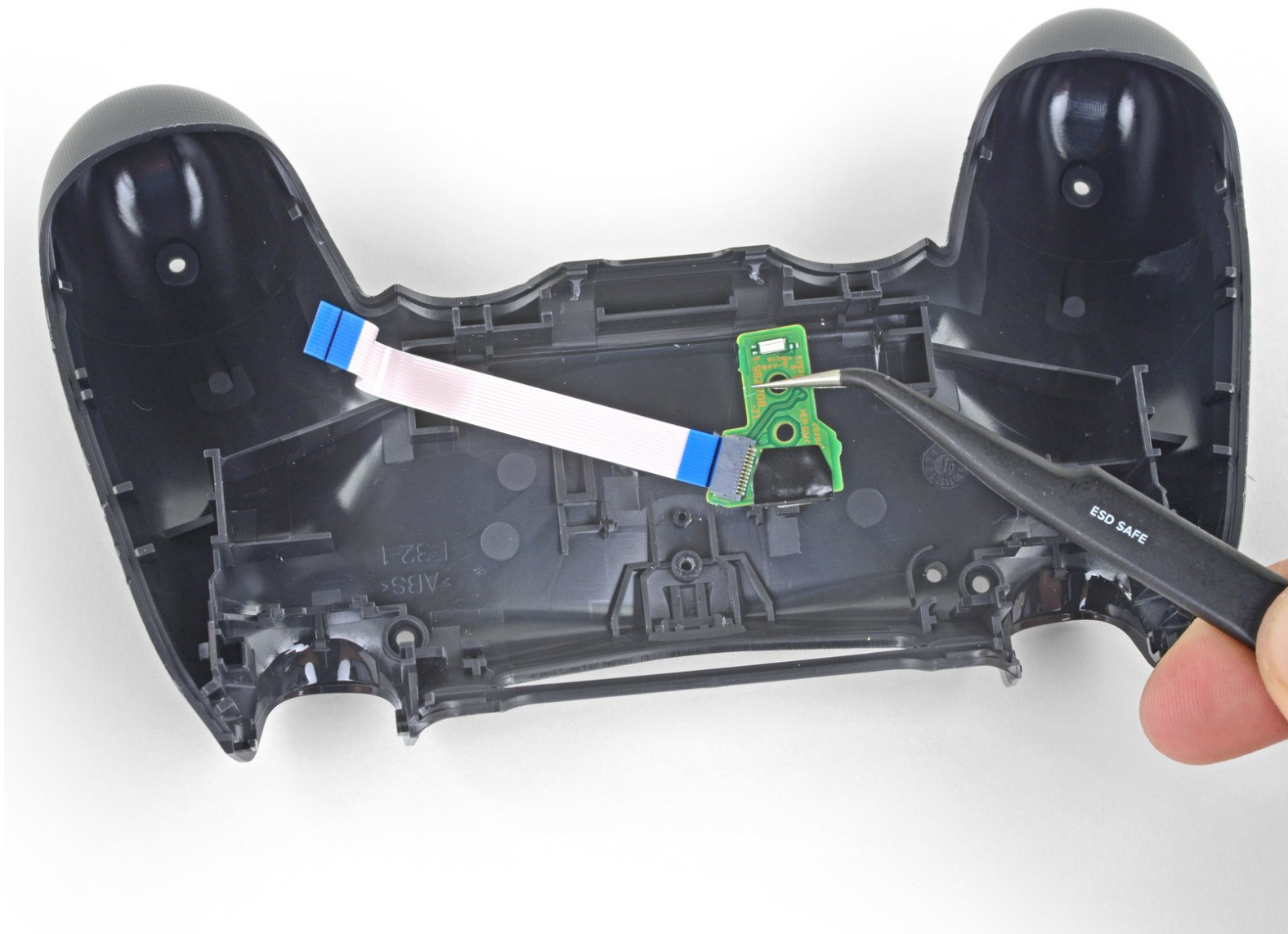




DualShock 4 CHU-ZCT2U Charging Assembly Replacement

Follow this guide to replace the charging...

Written By: Sam Omiotek



INTRODUCTION

Follow this guide to replace the charging assembly on a Sony Dualshock 4 CHU-ZCT2U PlayStation controller.



TOOLS:

- [iFixit Opening Tool](#) (1)
- [Phillips #00 Screwdriver](#) (1)
- [Tweezers](#) (1)



PARTS:

- [DualShock 4 Controller Charging Assembly \(JDS-030\)](#) (1)

Step 1 — Remove the rear panel screws



- Use a Phillips screwdriver to remove the four 6.4 mm-long screws from the rear panel.

Step 2 — Separate the rear panel



- ❗ Four fragile plastic clips hold the panels together. You can see their locations more clearly in [this guide](#).
- ❗ The clips help hold the seams together. If you break these clips, the controller will still work.
- Insert an opening tool into the crease where the front and rear panel meet, starting from the outside edge of either handle.
- Gently pry the rear panel off of the front panel until they become partially separated.

Step 3 — Release the plastic clips



- Use the opening tool to separate the panels by releasing the plastic clips around the perimeter of the controller.

Step 4 — Remove the rear panel



- Lift the rear panel directly away from the controller.

⚠ Do not completely remove the rear panel. It is still attached to the controller by a ribbon cable.

Step 5



- Use your fingers to gently pull the ribbon cable straight out of its connector on the motherboard.
 - ❗ Since this cable's pull tab is too small to grab with fingers or tweezers, grab the cable itself. Otherwise utilize pull tabs whenever possible.
- ☑ During reassembly, grab the ribbon cable by the blue tab and gently press the cable straight into the connector. Push the blue tab rather than the ribbon cable itself.

Step 6 — Remove the light guide



- Use an opening tool or spudger to separate the white plastic bar from the rear panel.

Step 7



- Remove the white plastic bar.

Step 8



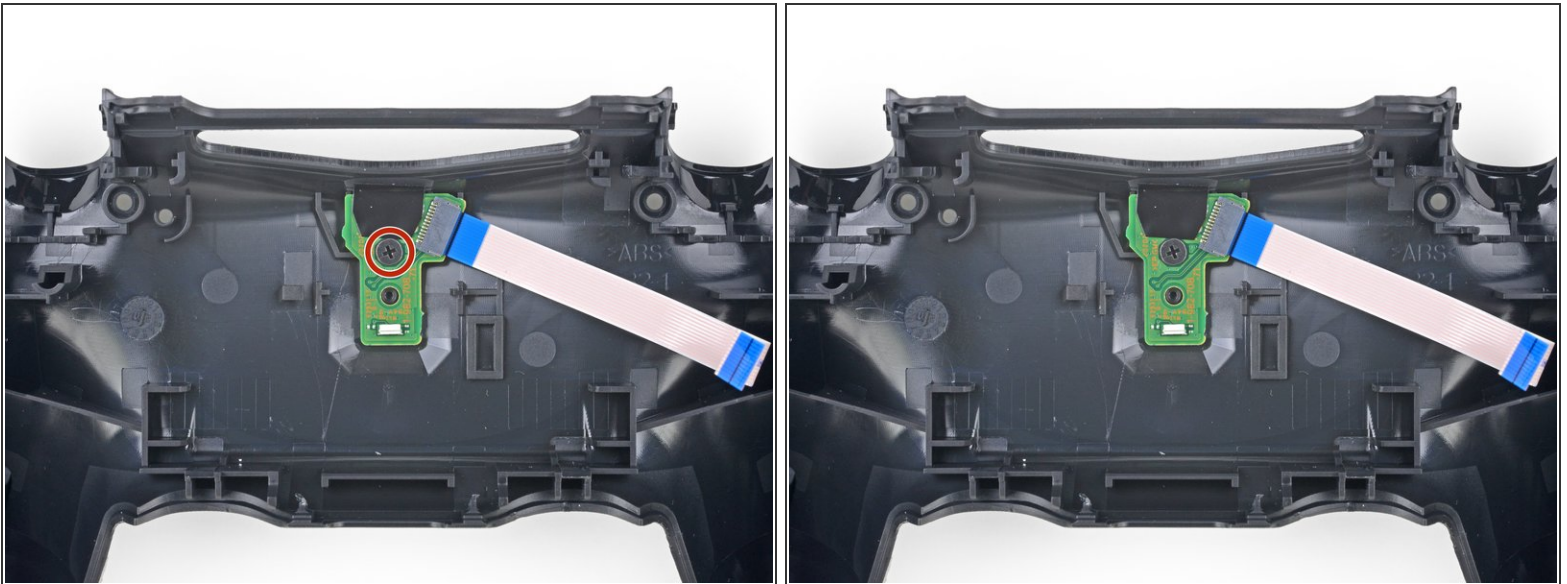
- Lift the light guide away from the rear panel to remove it.
 - ☑ During reassembly, align the light guide with the rear panel using [the notch](#) near the bottom left.

Step 9



- Use your fingers to press the translucent plastic piece down through the top of the controller.
- Remove the translucent plastic piece.

Step 10 — Remove the charging assembly



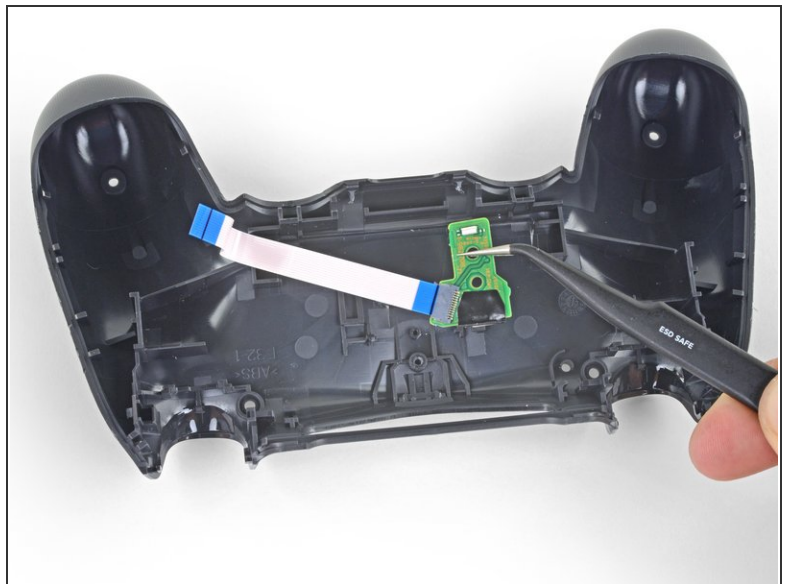
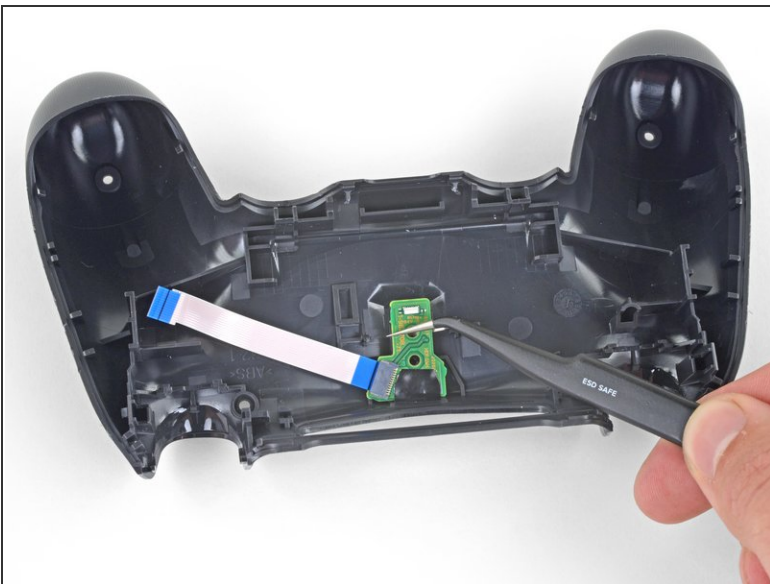
- Use a Phillips screwdriver to remove the 4.4 mm-long screw from the charging assembly.

Step 11



- Use the pointed end of a spudger to lift the charging assembly away from the rear panel.

Step 12



- Use your fingers or a pair of tweezers to remove the charging assembly from the rear panel.

To reassemble your device, follow the above steps in reverse order.

Take your e-waste to an [R2 or e-Stewards certified recycler](#).

Repair didn't go as planned? Check out our [Answers community](#) for troubleshooting help.