



Goodman GSX16 Central Air Conditioning Unit

Filter Replacement

How to replace the filter of a Goodman GSX16 central air conditioning unit in a home.

Written By: Janice Farris



INTRODUCTION

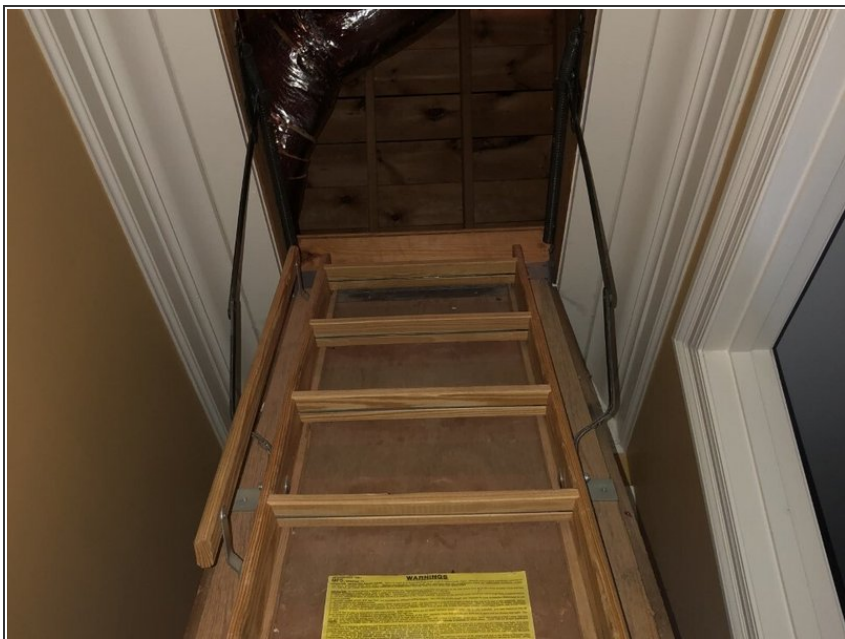
If the Goodman GSX16 central air conditioning unit in your home is not blowing cold air like usual, it most likely needs the filter replaced. The filter must be replaced every few months to ensure that it is able to filter the air properly and stop dust and contaminants from entering the AC unit.

Step 1 — Filter



- Turn the air conditioner unit off prior to changing the air filter.

Step 2



- Go into the attic where your air conditioner unit is located via the access door on the ceiling or wherever your air conditioner is located.

Step 3



- Open the filter access door and pull the old filter out.

Step 4



- Place the new filter in the unit with the arrow pointing towards the air conditioner unit.

Step 5



- Close the door to the filter and make sure it is snug with no air leakage.

Step 6



- Turn the air conditioner unit back on.

To reassemble your device, follow these instructions in reverse order.