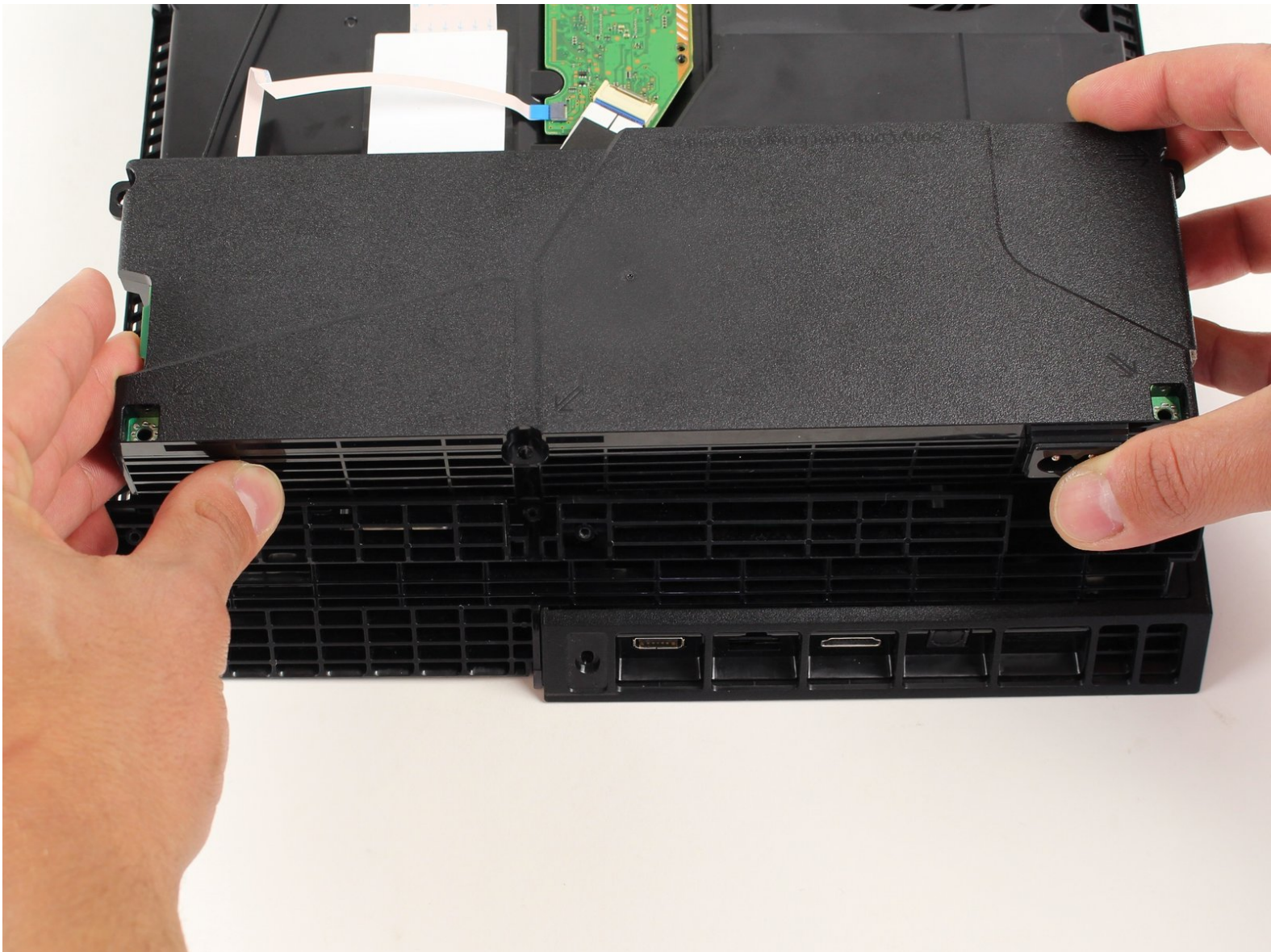




PlayStation 4 Power Supply Replacement

Replacement of Power Supply

Written By: Robert Harvey



INTRODUCTION

The official guide has been updated and can be found [here](#). This guide is archived for historical purposes.

Use this guide to replace the power supply of Sony's first generation PS4. Be aware that any replacement or teardown beyond the hard drive voids the Sony warranty.



TOOLS:

- [Phillips #1 Screwdriver](#) (1)
- [TR9 Torx Security Screwdriver](#) (1)
- [Tweezers](#) (1)



PARTS:

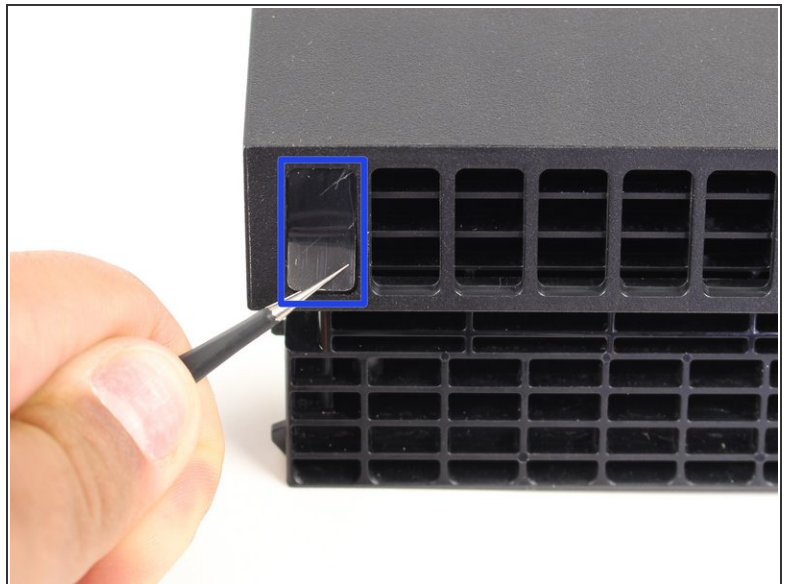
- [PlayStation 4 ADP-240CR Power Supply](#) (1)
- [PlayStation 4 ADP-240AR Power Supply](#) (1)
- [PlayStation 4 ADP-200ER Power Supply](#) (1)
- [PlayStation 4 Console Screw Set](#) (1)

Step 1 — Power Supply



- Flip the PS4 over on its top.

Step 2



- Remove the four stickers on the back of the PS4.

⚠ Despite the scary-sounding warning on the sticker, [Sony cannot legally void your warranty for removing it](#)—only if you damage your device.

Step 3



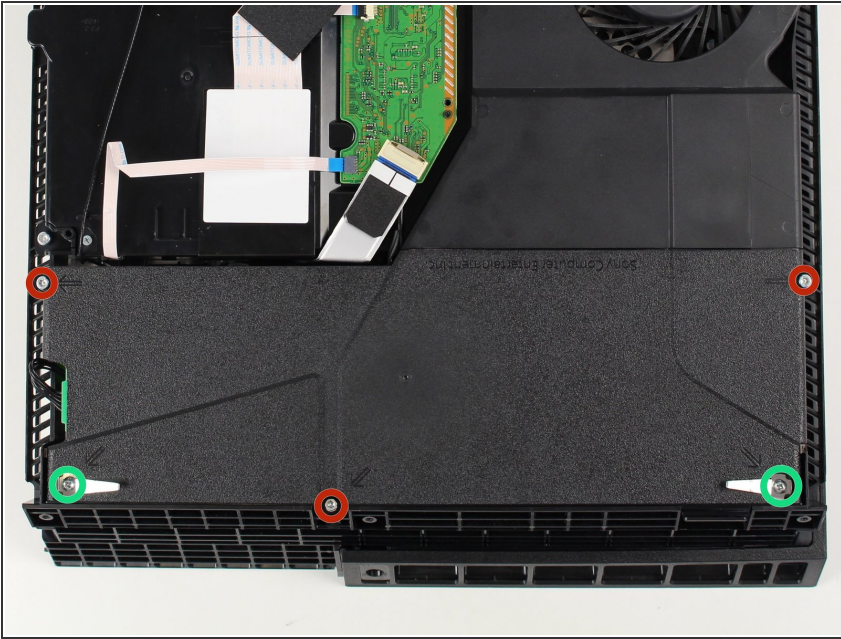
- Remove the three 9mm TR8 Torx Security screws on the back of the system.

Step 4



- Remove the bottom panel by lifting the front piece up and sliding the panel towards the back.

Step 5



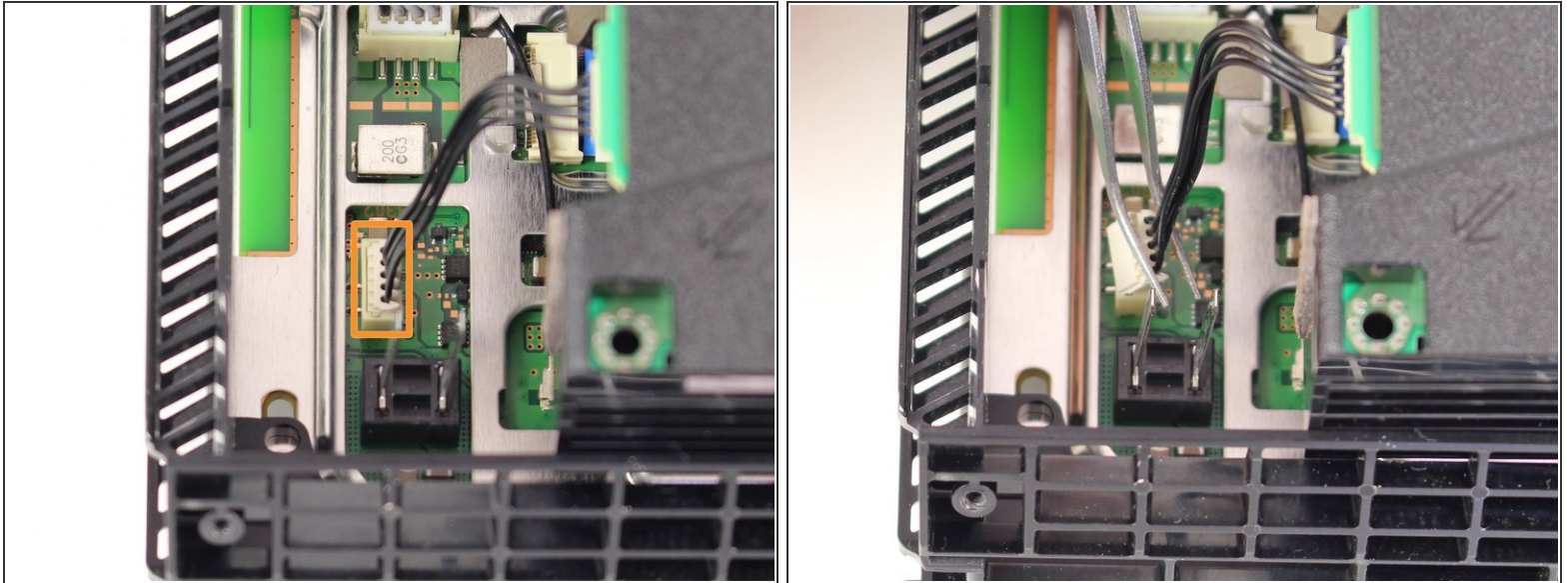
- Remove the three 9mm TR9 Torx screws.
- Remove the two 4cm Phillips head #1 screws.

Step 6



- Lift straight up on the power supply.

Step 7



- Remove the 5 wire plug that is attached from the power supply to the motherboard.
- You can now fully remove the power supply from the system.

To reassemble your device, follow these instructions in reverse order.