



# Samsung Galaxy Watch3 Motherboard Replacement

This guide shows how to replace the motherboard in a Samsung Galaxy Watch3.

Written By: Tobias Isakeit



# INTRODUCTION

Use this guide to replace the motherboard in a Samsung Galaxy Watch3.



## TOOLS:

- [Tri-point Y00 Screwdriver](#) (1)
  - [iFixit Opening Tools](#) (1)
  - [Spudger](#) (1)
  - [Phillips #00 Screwdriver](#) (1)
  - [ESD Safe Tweezers Blunt Nose](#) (1)
-

## Step 1 — Unfasten the back cover screws



- Before starting repairs, take your watch off the charger and power it down.
- Use a Tri-point Y00 driver to unfasten the four screws on the back of the watch.
- ⓘ Don't worry about removing the screws, they will stay in place in the back cover.

## Step 2 — Wedge open the back cover



- Insert an opening tool between the back cover and the metal housing.
- Twist the opening tool to create a wider gap.

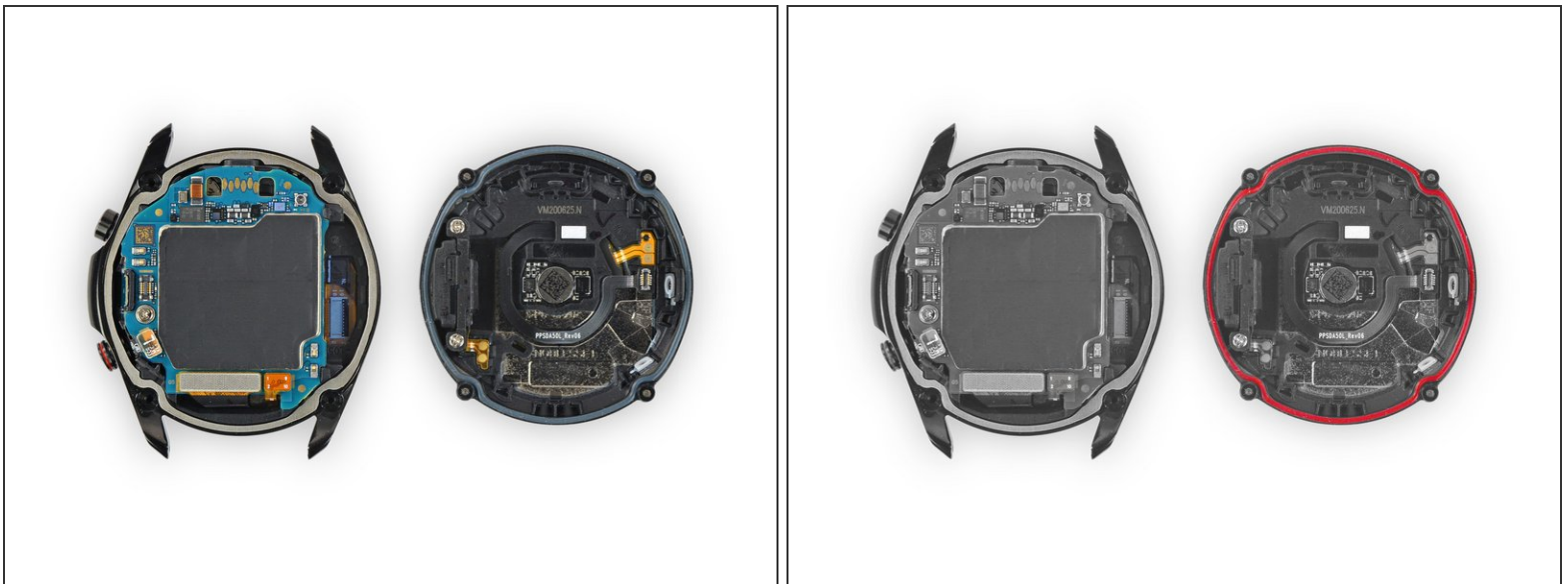
⚠ Don't fully remove the back cover just yet. The sensor flex cable is still connected to the motherboard.

### Step 3 — Disconnect the sensor flex cable



- Lay the watch face down.
- Carefully lift the back cover up from the edge with the buttons to access the sensor connector.
- Use the flat end of a spudger to pry up and disconnect the sensor flex cable from the motherboard.

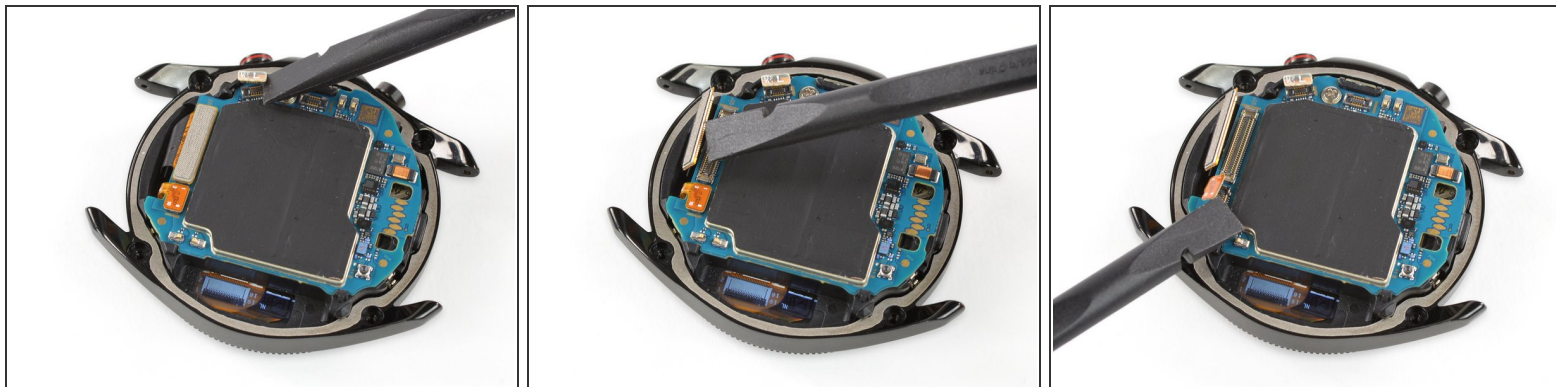
### Step 4 — Remove the back cover



- Remove the back cover.
- ☑ Make sure the rubber gasket (marked red) is undamaged. If damaged replace it with a new one during reassembly to maintain proper water resistance.



## Step 5 — Unplug the three connectors



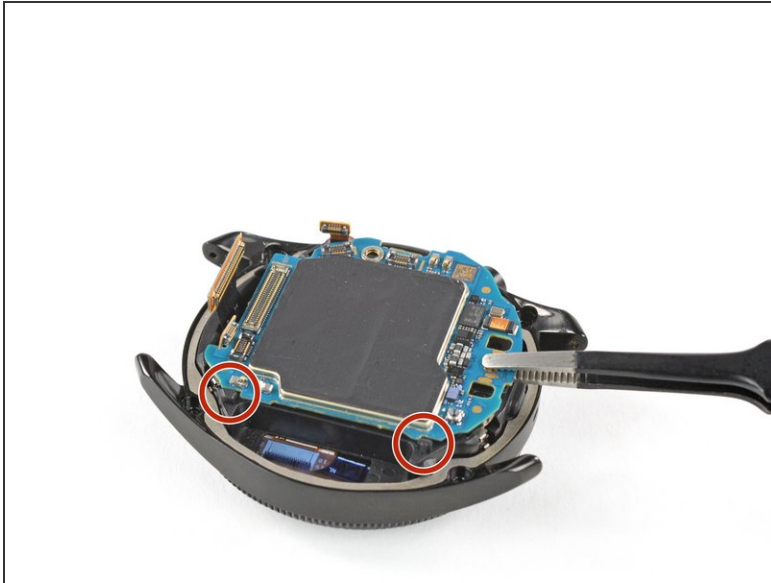
- Use the flat end of a spudger to disconnect the flex cables of the side buttons, the display and the hall sensor.

## Step 6 — Unfasten the motherboard screw



- Remove the Phillips #00 screw.

## Step 7 — Remove the motherboard



- The motherboard is held in place by two small plastic clips.
- Use a pair of blunt tweezers to lift the motherboard out from underneath the plastic clips towards the buttons.
- Remove the motherboard.

If possible, turn on your device and **test your repair** before resealing.

To reassemble your device, **follow these instructions in reverse order**.

Repair didn't go as planned? Try some [basic troubleshooting](#), or ask our [Answers community](#) for help.

Take your e-waste to an [R2 or e-Stewards certified recycler](#).